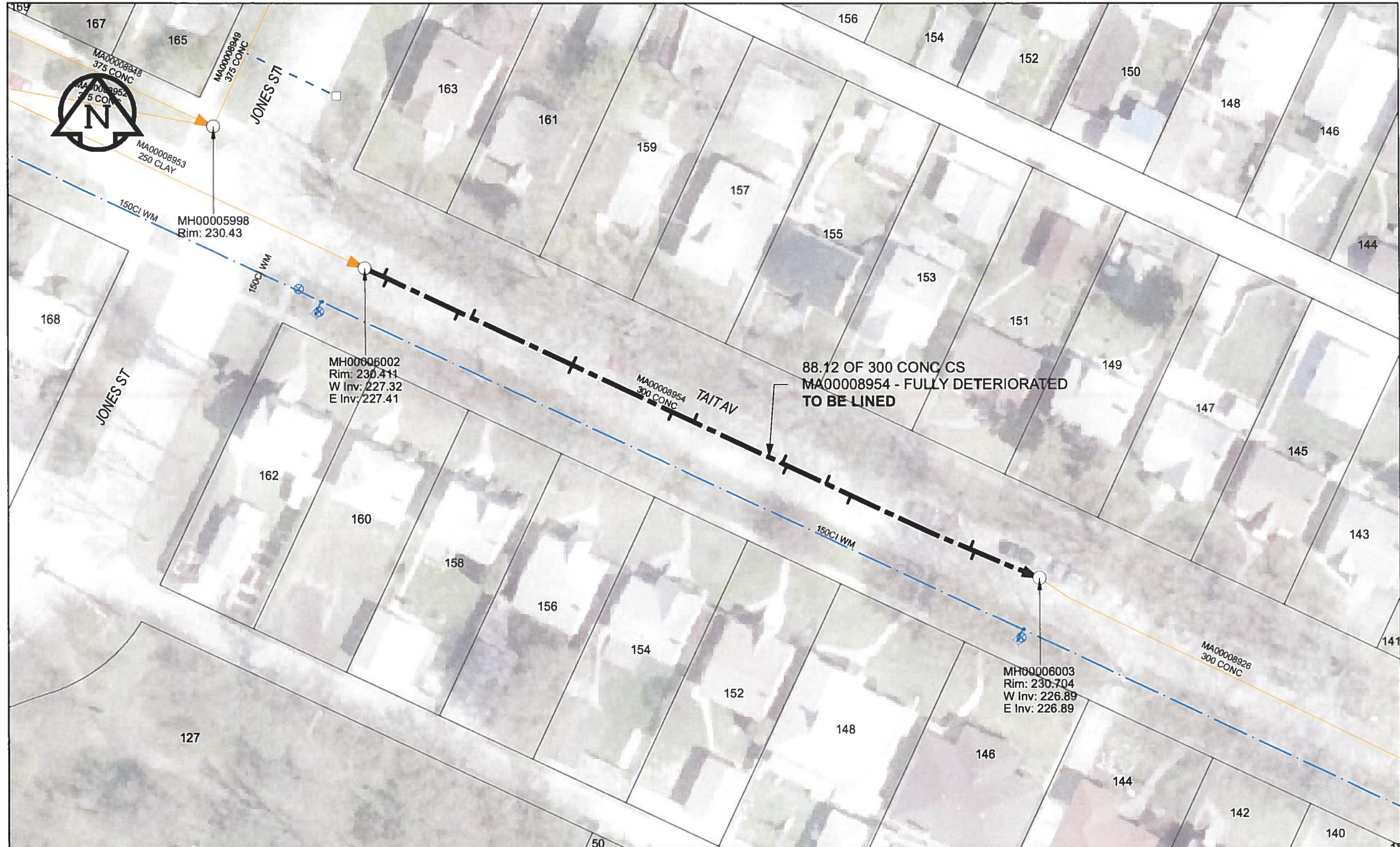


B SIZE 11" X 17" (279mm x 432mm)



SEWER JUNCTION INFORMATION

REF MH*	DIST FROM* REF MH	SIZE*	CLOCK AT*
MH00006002	2.4	150Ø	10
MH00006002	2.9	150Ø	02
MH00006002	12.2	150Ø	03
MH00006002	13.9	150Ø	10
MH00006002	27.1	150Ø	01
MH00006002	27.1	150Ø	11
MH00006002	40.2	150Ø	01
MH00006002	43	250Ø	10
MH00006002	54.6	150Ø	11
MH00006002	55.2	150Ø	01
MH00006002	60.3	150Ø	11
MH00006002	63.6	150Ø	01
MH00006002	79.1	150Ø	10
MH00006002	79.7	150Ø	02

* JUNCTION INFORMATION FROM VIDEO INSPECTION

WARNING
 IF POWER EQUIPMENT OR EXPLOSIVES ARE TO BE USED FOR EXCAVATION ON THIS PROJECT, THE CONTRACTOR MUST:
 1) NOTIFY THE GAS COMPANY OF THE PROPOSED LOCATION OF EXCAVATION.
 2) TAKE PRECAUTION TO AVOID DAMAGE TO GAS COMPANY INSTALLATIONS.
 SEE PROVINCIAL REGULATION 140/92 FOR DETAILS

APEGM
 Certificate of Authorization
 AECOM Canada Ltd.
 No. 4671 Date: *June 27/12*

METRIC
 WHOLE NUMBERS INDICATE MILLIMETRES
 DECIMALIZED NUMBERS INDICATE METRES
 0 2.5 5 10 15 20
 Meters

BID OPPORTUNITY NO. 374-2012

AECOM REVIEW DRFT CHK AD
 FILE NAME: 252.pdf Saved By: JZ

LOCATION APPROVED UNDERGROUND STRUCTURES

SUPR. U/G STRUCTURES COMMITTEE DATE

NOTE:
 LOCATION OF UNDERGROUND STRUCTURES AS SHOWN ARE BASED ON THE BEST INFORMATION AVAILABLE. BUT NO GUARANTEE IS GIVEN THAT ALL EXISTING UTILITIES ARE SHOWN OR THAT THE GIVEN LOCATIONS ARE EXACT. CONFIRMATION OF EXISTENCE AND EXACT LOCATION OF ALL SERVICES MUST BE OBTAINED FROM THE INDIVIDUAL UTILITIES BEFORE PROCEEDING WITH CONSTRUCTION.

Can-Net GPS Reference Station WINN/810

NO.	ISSUED FOR CONSTRUCTION	DATE	BY
0	ISSUED FOR CONSTRUCTION	12/06/18	JZ
	REVISIONS	YY/MM/DD	BY

AECOM

DESIGNED BY	ALD	CHECKED BY	<i>cm</i>
DRAWN BY	JZ	APPROVED BY	<i>BTW</i>
HOR. SCALE	1:500	RELEASED FOR CONSTRUCTION	<i>[Signature]</i>
VERT. SCALE	N/A	DATE	<i>12/06/12</i>

PROFESSIONAL'S SEAL

PROVINCE OF MANITOBA
[Signature]
 K. FITCHETT
 REGISTERED ENGINEER

CONSULTANT DRAWING NO.
 60250984-01-C-252-R0X.mxd

THE CITY OF WINNIPEG
 WATER AND WASTE DEPARTMENT

2012 SEWER RENEWALS
 BY CIPP LINING
 CONTRACT 9
 TAIT AV (CL)
 1ST MH E OF JONES ST TO
 2ND MH E OF JONES ST

SHEET 82 OF 84
 CITY DRAWING NUMBER
 10252 REV 0