

PAVEMENT WIDENING (REF. SD-207) TYPICAL CROSS SECTION
N.T.S.

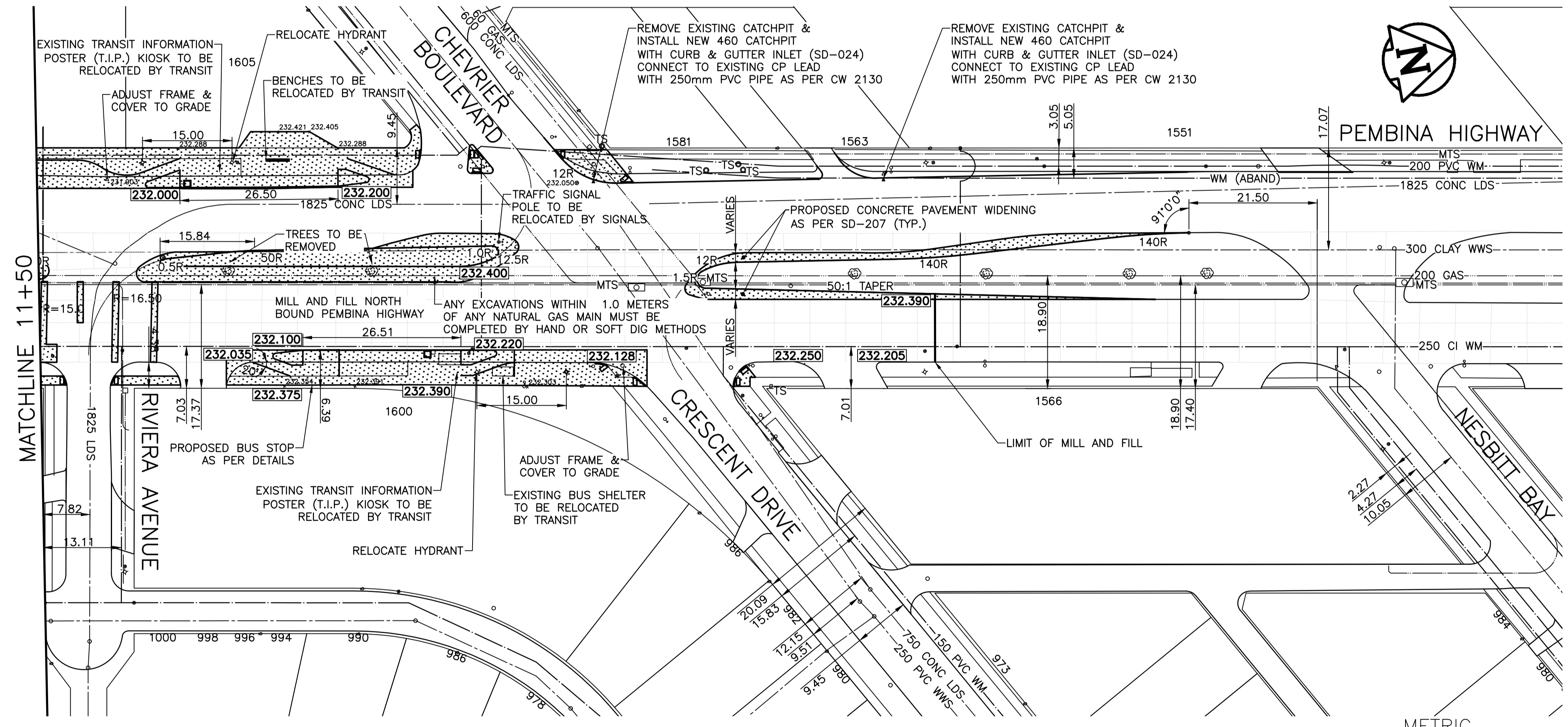
- CONSTRUCTION NOTES**
- 1) CURB REPLACEMENT AS DIRECTED BY THE CONTRACT ADMINISTRATOR
 - 2) ALL STREET RADIUS CURB UNDER 15M RADIUS SHALL BE REPLACED AS MODIFIED OR AS DIRECTED BY THE CONTRACT ADMINISTRATOR
 - 3) PAVEMENT REPAIRS SHOWN ARE ONLY A REPRESENTATIVE SAMPLE OF THE TENDERED QUANTITIES
 - 4) ASPHALT TIE-INS ON APPROACHES TO BE DETERMINED IN THE FIELD BY THE CONTRACT ADMINISTRATOR
 - 5) ALL BULLNOSES TO HAVE SLOPED FACE
 - 6) INSTALL DETECTABLE WARNING SURFACE TILES AS DIRECTED BY THE CONTRACT ADMINISTRATOR

WARNING

IF POWER EQUIPMENT OR EXPLOSIVES ARE TO BE USED FOR EXCAVATION ON THIS PROJECT THE CONTRACTOR MUST:

- 1) OBTAIN CLEARANCE FROM THE GAS UTILITY PRIOR TO EXCAVATION.
- 2) TAKE PRECAUTION TO AVOID DAMAGE TO GAS UTILITY INSTALLATIONS.

SEE PROVINCIAL REGULATION 210/72 FOR DETAILS



METRIC
WHOLE NUMBERS INDICATE MILLIMETRES
DECIMAL NUMBERS INDICATE METRES

BID OPPORTUNITY NO. 384-2012

EXISTING	LEGEND - PLAN	PROPOSED	EXISTING	LEGEND - PLAN	PROPOSED	EXISTING	LEGEND - PROFILE	PROPOSED
⊕	HYDRANT	◆	---	LDS/WWS	---	---	N/BOUND EAST GUTTER	---
⊙	VALVE	●	---	WATERMAIN	---	---	N/BOUND MEDIAN GUTTER	---
⊚	CURB STOP	⊙	---	GAS	---	---	N/BOUND SIDEWALK	---
▣	CONCRETE PAVEMENT	▣	---	TRAFFIC SIGNALS	---	---		---
○	O.L.S.	○	---	ASPHALT MILL & FILL	---	---		---
○	MANHOLE	○	---	CURB RENEWAL	---	---		---
▣	CATCH BASIN	▣	231.000	ELEVATIONS	231.000	---		---
▣	CURB INLET	▣	---	PROPERTY LINE	---	---		---
☆	HYDRO POLE	☆	---	SURVEY BAR	---	---		---
⊙	TRAFFIC SIGNAL POLE	⊙	---	GEODETIC BENCH MARK	---	---		---
⊙	DETECTABLE WARNING TILE	⊙	---	RAMP CURB	---	---		---

LOCATION APPROVED UNDERGROUND STRUCTURES

SUPR. U/G STRUCTURES COMMITTEE DATE

NOTE:
LOCATION OF UNDERGROUND STRUCTURES AS SHOWN ARE BASED ON THE BEST INFORMATION AVAILABLE. BUT NO GUARANTEE IS GIVEN THAT ALL EXISTING UTILITIES ARE SHOWN OR THAT THE GIVEN LOCATIONS ARE EXACT. CONFIRMATION OF EXISTENCE AND EXACT LOCATION OF ALL SERVICES MUST BE OBTAINED FROM THE INDIVIDUAL UTILITIES BEFORE PROCEEDING WITH CONSTRUCTION.

B.M. ELEV. CBM 64-031 232.184

ENGINEERING DIVISION TECHNOLOGY SERVICES BRANCH 106 - 1155 PACIFIC AVE			
DESIGNED BY	S.S.	CHECKED BY	D.T.
DRAWN BY	R.M. / R.M.C.	APPROVED BY	S.P.
HOR. SCALE: 1 : 500		VERTICAL: 1 : 10	
DATE 2012/06/08		DATE 2012/06/08	
1	ISSUED FOR TENDER	2012/06/08	S.S.
0	ISSUED FOR REVIEW	2012/05/03	R.M.C.
NO.	REVISIONS	DATE	BY

ENGINEER'S SEAL

PROVINCE OF MANITOBA
S.R.
SUDERMAN
Member
23997
REGISTERED PROFESSIONAL ENGINEER

ORIGINAL SIGNED BY
S.R.S. JUNE 8, 2012

THE CITY OF WINNIPEG
PUBLIC WORKS DEPARTMENT

PEMBINA HIGHWAY - NORTHBOUND
FROM PLAZA DRIVE TO CHEVRIER BOULEVARD
MILL AND FILL / ACTIVE TRANSPORTATION CORRIDOR
AND ASSOCIATED WORKS

CITY DRAWING NUMBER
SE-12-38-R1
SHEET 6 OF 8

6

FROM STA. 11+50 TO NORTH LIMIT OF CONSTRUCTION