

SLIDING DOOR SCHEDULE:

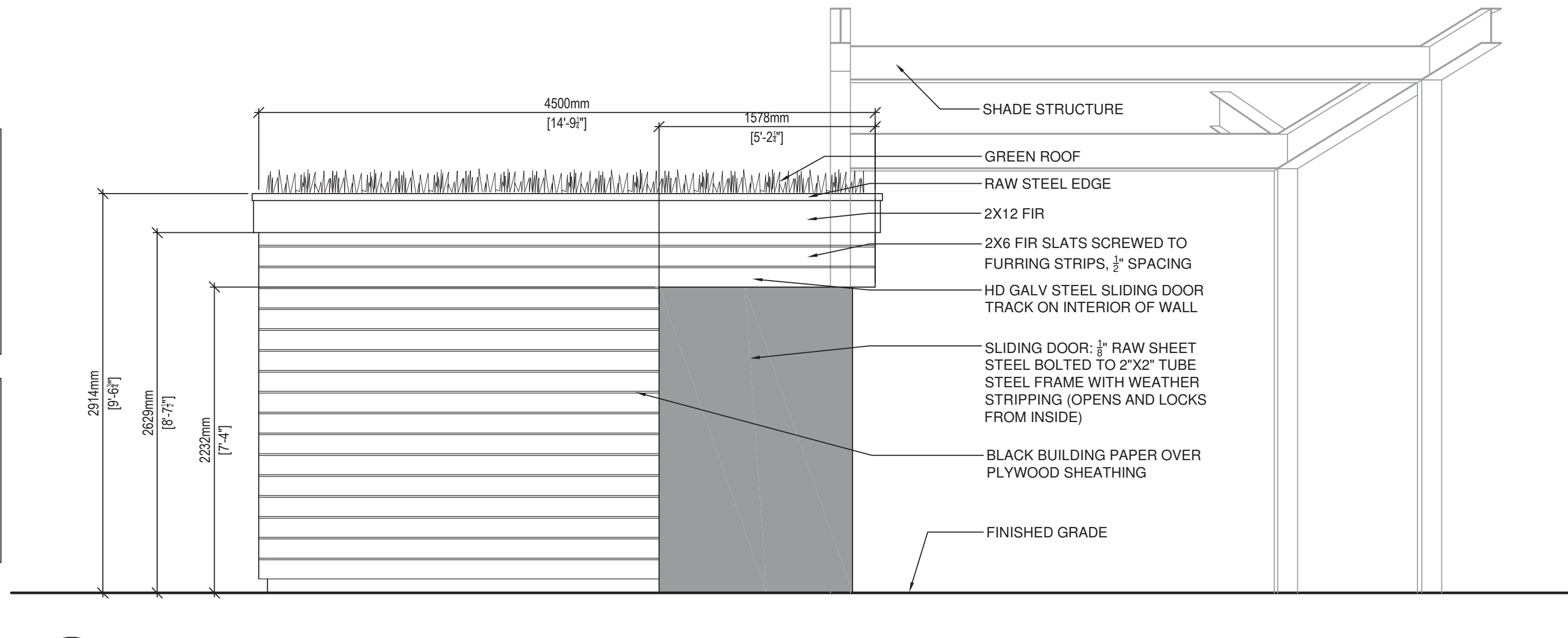
- 2 - C-108Track C.A. finish x required length (2 x door width)
- 2 - C-110 Fascia CA x required length (2 x door width)
- 4 - C-894 hangers (2 per door for 350lbs capacity)
- 4 - CAS-2 Stops
- 2 - C-914 Guide Channel C.A. Finish x door width (recessed in bottom of door)
- 2 - C-913-2 double roller guide
- 4 - 70B Surface Bolts

AS SUPPLIED BY SHANAHAN'S PH: 204-694-3301 OR APPROVED EQUAL

SWING DOOR SCHEDULE:

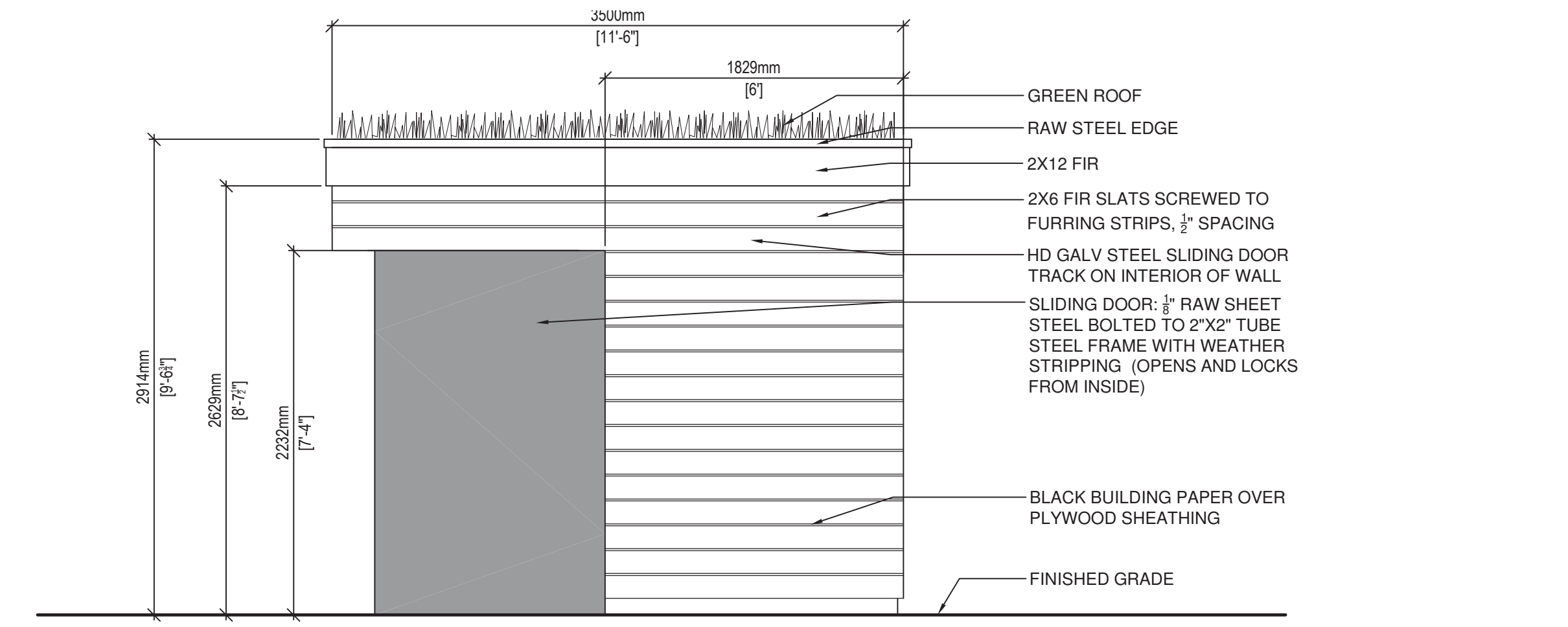
3-ea Hinges	FBB191NRP 4 1/2 x 4	26D
1-ea Mortise Lock w/Deadbolt	L9480 06A	626
1-Closer	4040XP -CUSH	689
1-ea W/Strip	1/W-205 x 3' x 2/W-50 x 7'	CA
1-ea Sweep	W-245 3'	CA
1-ea Threshold	CT-10 3'	CA

AS SUPPLIED BY SHANAHAN'S PH: 204-694-3301 OR APPROVED EQUAL

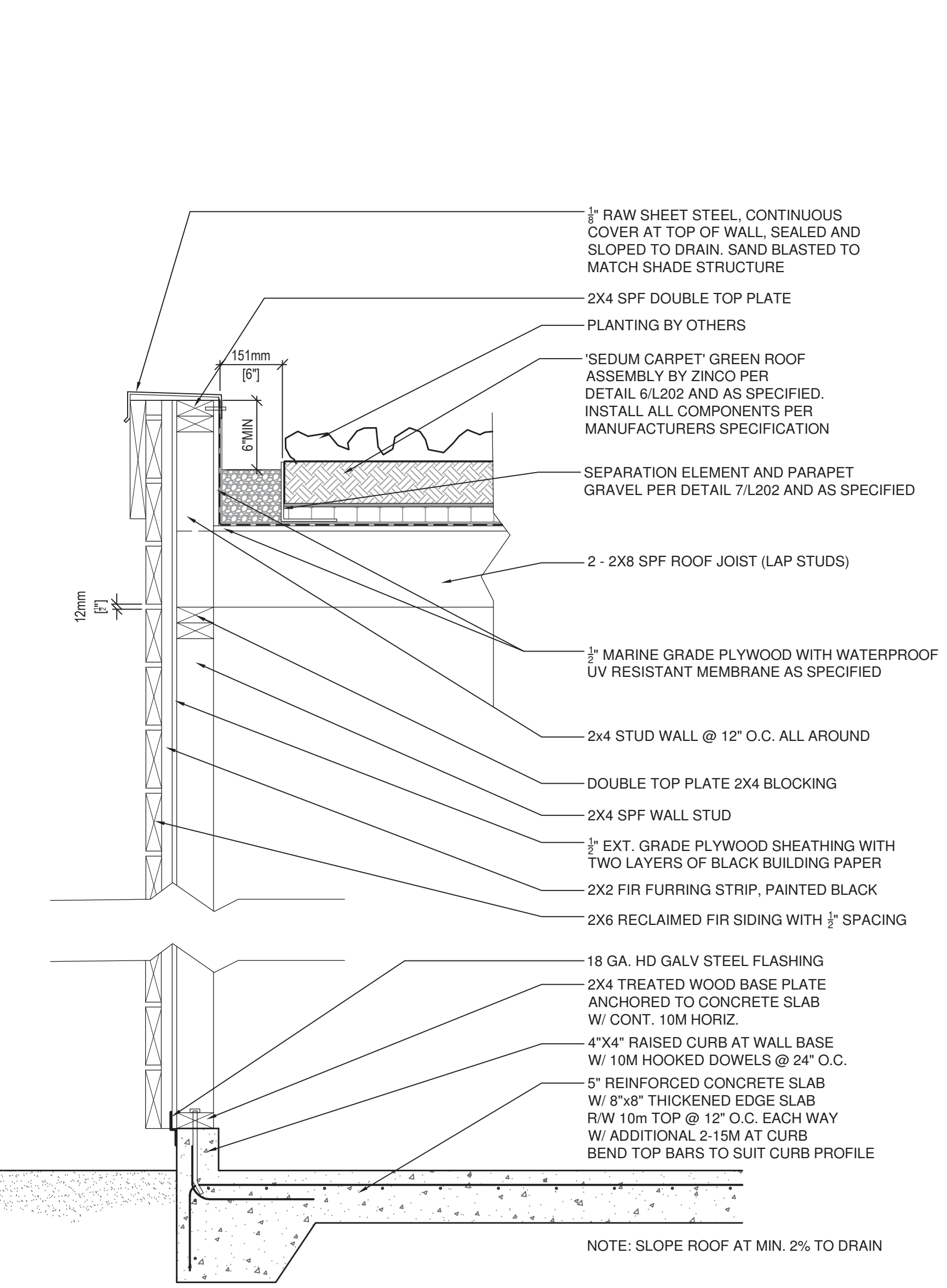


1 SOUTH ELEVATION
1:30 (at 24x36)

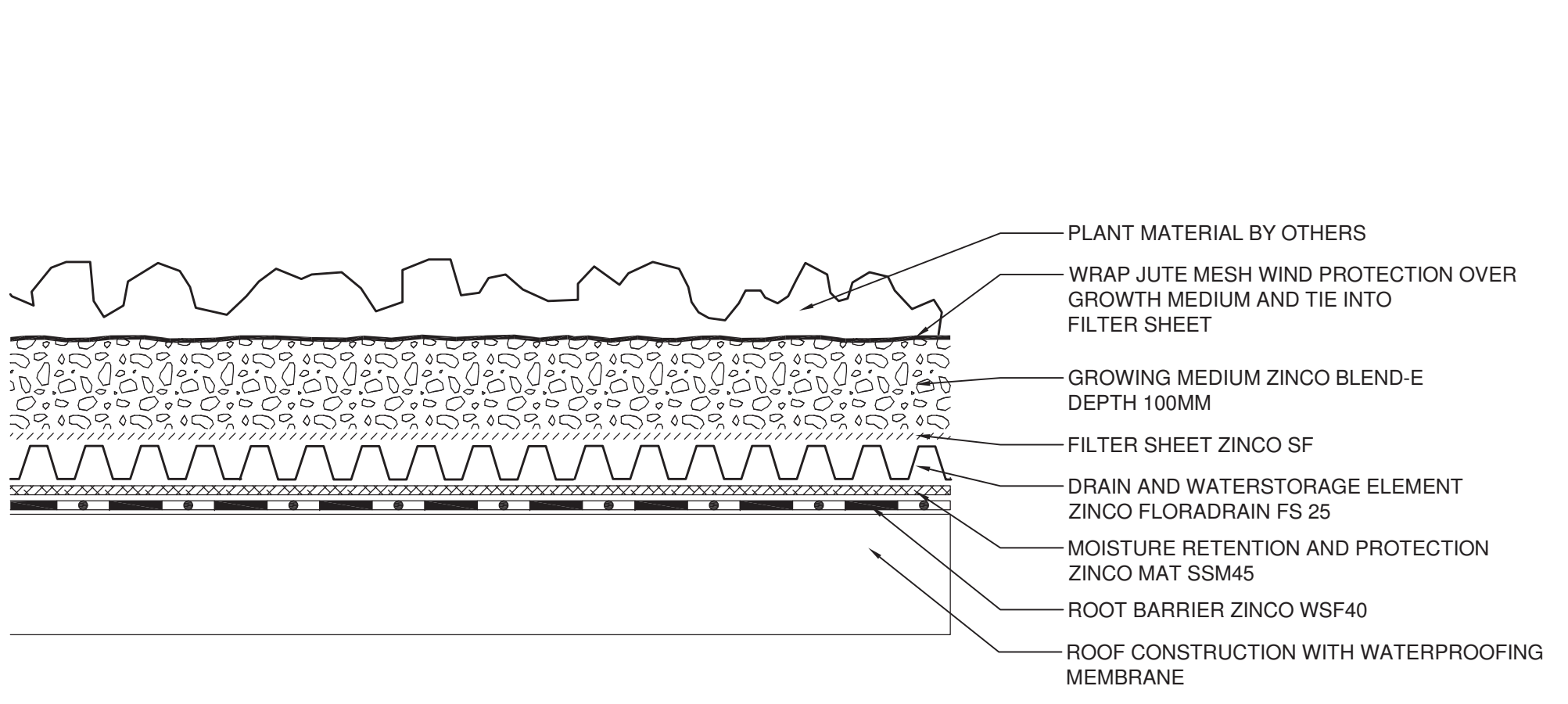
2 EAST ELEVATION
1:30 (at 24x36)



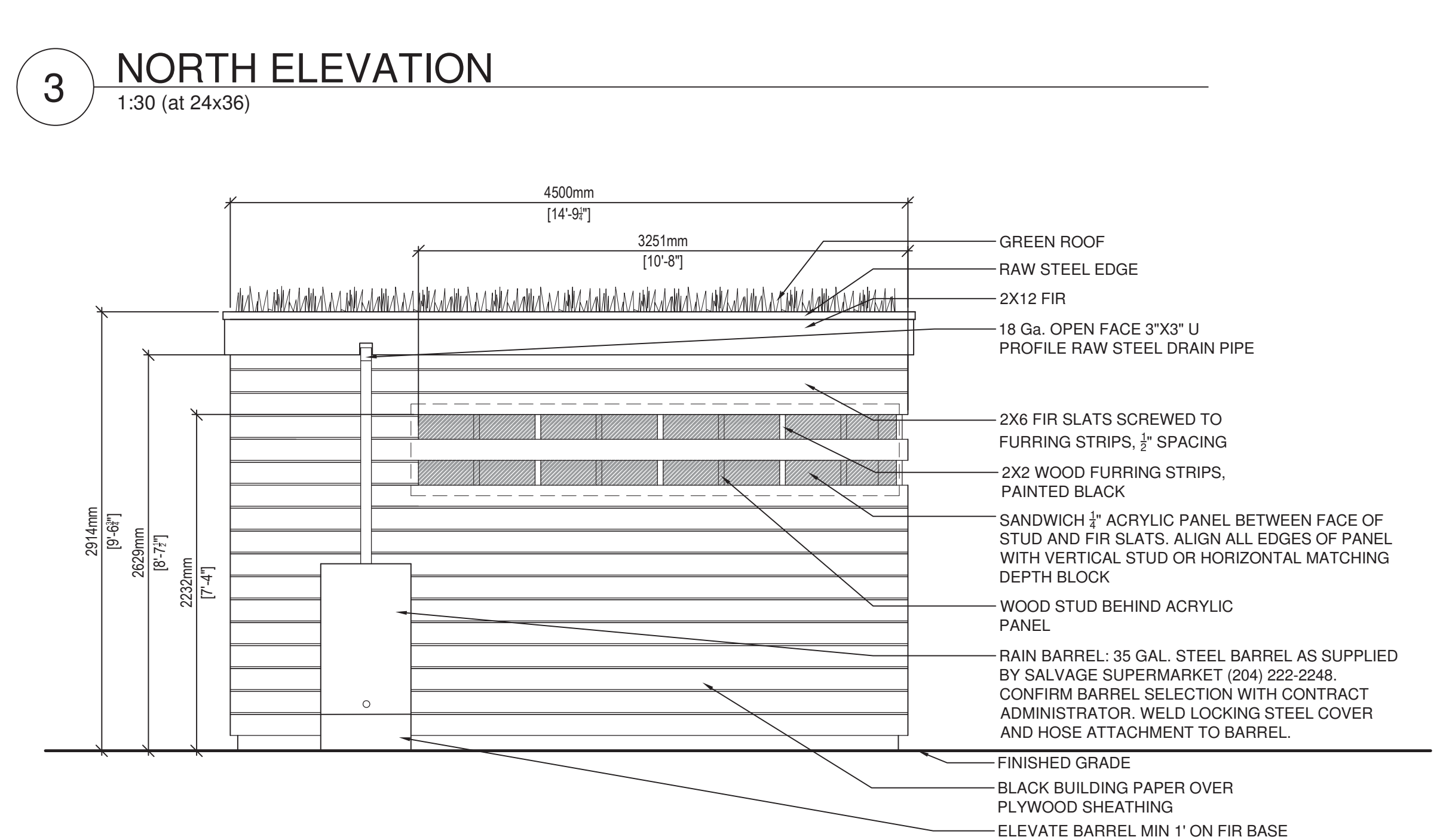
3 NORTH ELEVATION
1:30 (at 24x36)



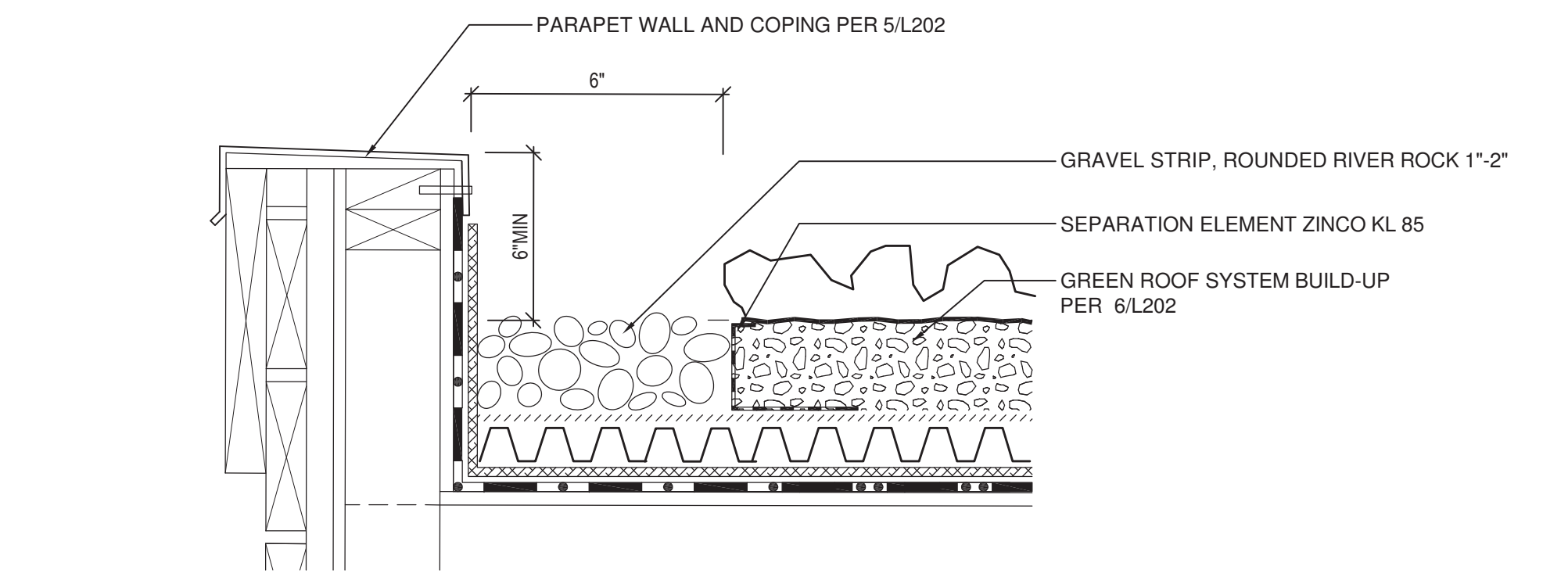
5 WALL SECTION - TYPICAL
1:10 (at 24x36)



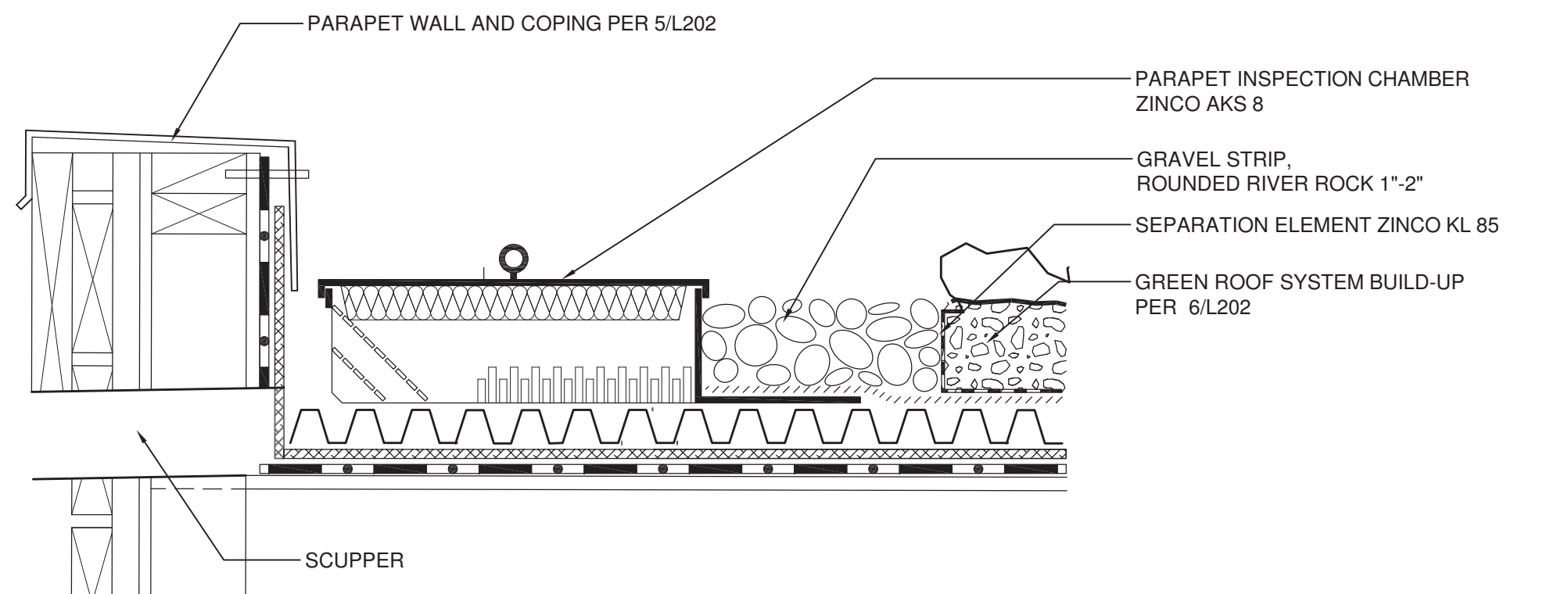
6 GREEN ROOF ASSEMBLY
N.T.S.



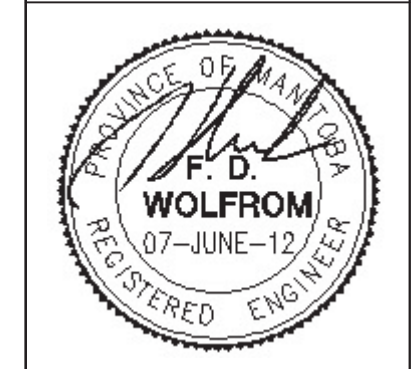
4 WEST ELEVATION
1:30 (at 24x36)



7 GREEN ROOF - PARAPET GRAVEL
N.T.S.



8 GREEN ROOF - SCUPPER
N.T.S.



#	Issue/Revision	Date
1	30% DESIGN REVIEW	JAN 14, 2012
2	60% DESIGN REVIEW	MAR 19, 2012
3	90% DESIGN REVIEW	MAY 31, 2012
4	ISSUED FOR TENDER	JUNE 5, 2012