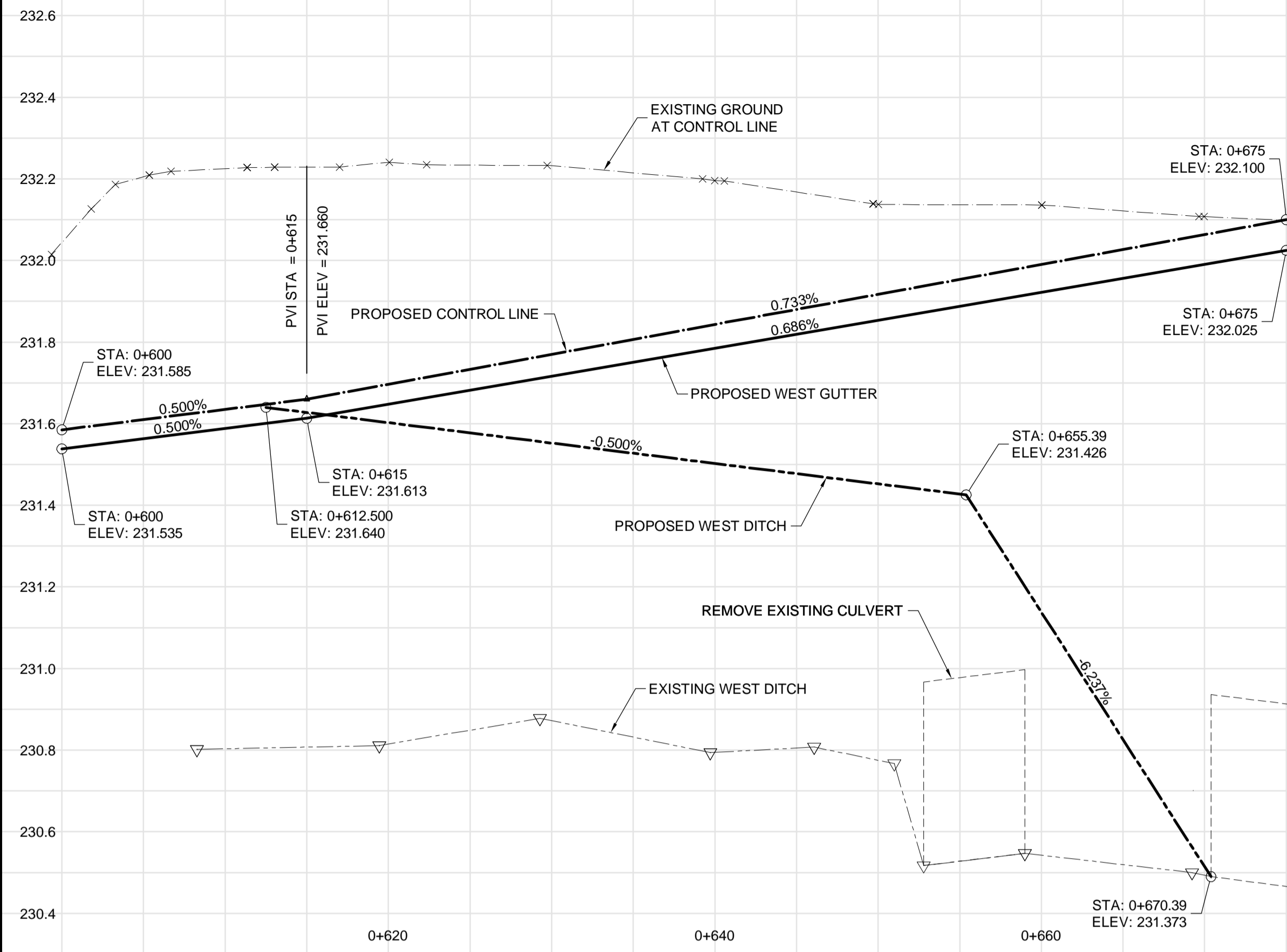
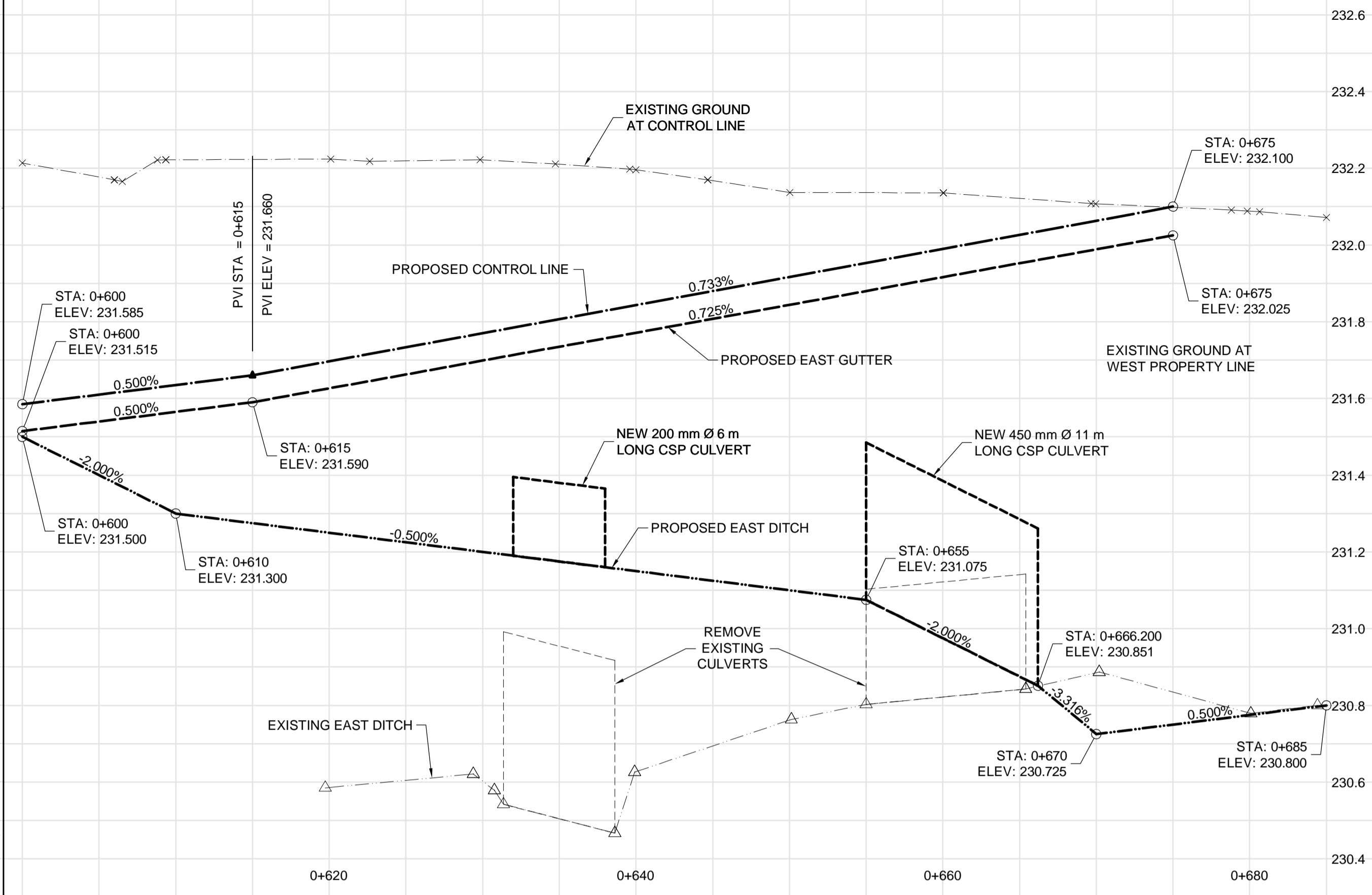


SOUTHBOUND PROFILE

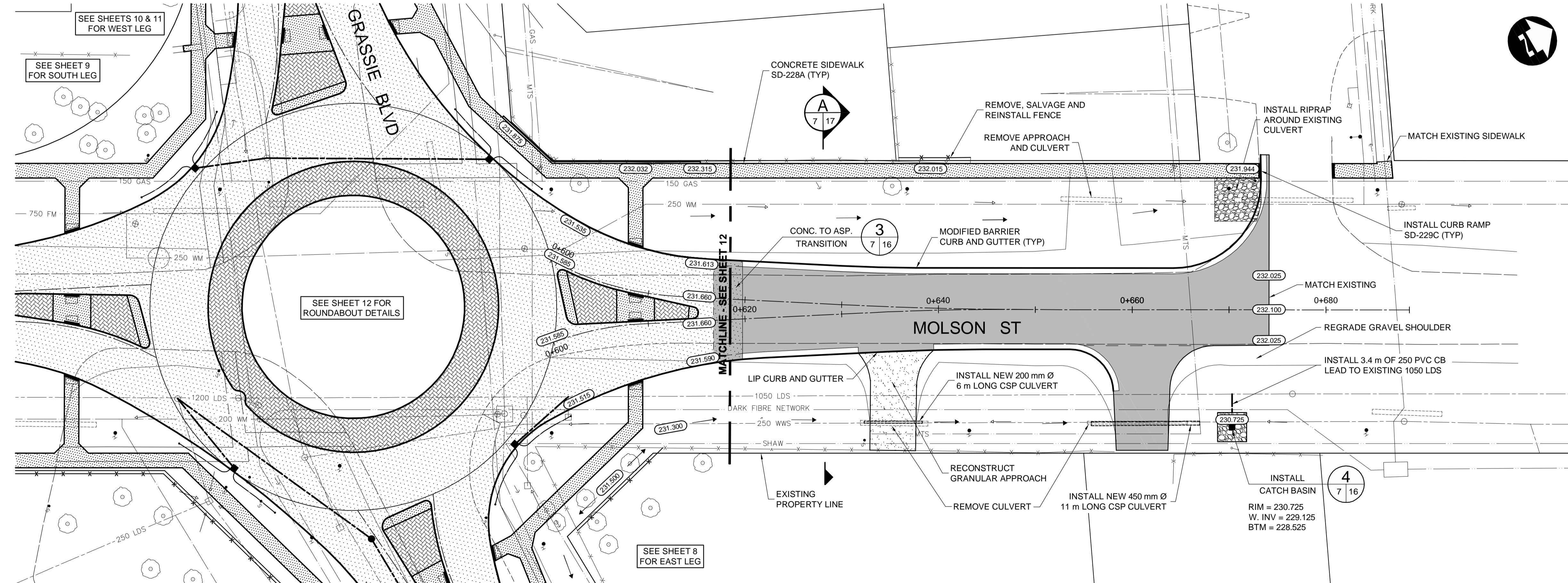


NORTHBOUND PROFILE



CONSTRUCTION NOTES:

- ALL DIMENSIONS ARE TO BACK OF CURB.
- ISOLATE MISCELLANEOUS ITEMS IN NEW CONCRETE WORKS AS PER SD-228C.
- LEGAL PLAN AND UNDERGROUND INFORMATION FROM CITY OF WINNIPEG LBIS.
- CONTRACTOR TO TAKE PRECAUTIONARY STEPS TO AVOID DAMAGE FROM CONSTRUCTION ACTIVITIES TO TREES WITHIN THE LIMITS OF CONSTRUCTION.
- LOCATION OF EXISTING SERVICES TO BE CONFIRMED IN THE FIELD BY THE CONTRACTOR.
- CB LEADS TO BE INSTALLED AT MIN. 1.0% SLOPE OR AS DIRECTED BY CONTRACT ADMINISTRATOR.
- ADJUST EXISTING CATCH BASINS AND MANHOLES AND ISOLATE AS PER SD-220A.
- GAS INFRASTRUCTURE NOTES:
 - A MINIMUM VERTICAL SEPARATION OF 300 mm FROM GAS MAINS AND 100 mm FROM GAS SERVICE LINES MUST BE MAINTAINED BETWEEN THE BOTTOM OF ANY MANITOBA HYDRO FACILITY AND THE TOP OF ANY NEW CATCH BASIN OR LAND DRAINAGE SEWER.
 - A MINIMUM HORIZONTAL SEPARATION OF 1.0 m MUST BE MAINTAINED BETWEEN ANY MANITOBA HYDRO FACILITY AND ANY NEW CATCH BASIN.
 - A MINIMUM 900 mm OF COVER SHALL BE MAINTAINED IN ALL AREAS WHERE EQUIPMENT WILL BE CROSSING, TRAVELING OR COMPACTING OVER THE 168.3 mm GAS MAINS.
 - A MINIMUM 600 mm OF COVER SHALL BE MAINTAINED IN ALL AREAS WHERE EQUIPMENT WILL BE CROSSING, TRAVELING OR COMPACTING OVER THE 114.3 mm AND 60.3 mm GAS MAINS.
 - A MINIMUM 450 mm OF COVER SHALL BE MAINTAINED IN ALL AREAS WHERE EQUIPMENT WILL BE CROSSING, TRAVELING OR COMPACTING OVER THE GAS SERVICE LINES.
 - IF EQUIPMENT MUST CROSS, TRAVEL, OR COMPACT OVER THE GAS MAIN WITH LESS THAN THE MINIMUM DEPTH OF COVER, EARTH BRIDGING OR STEEL PLATES SHALL BE PLACED OVER THE MAIN AND EXTEND A MINIMUM OF 1.0 m ON EITHER SIDE AT EACH CROSSING LOCATION.
 - CAUTION MUST BE USED TO ENSURE THE INTEGRITY OF THE GAS PIPELINE COATING. ANY DAMAGES TO THE COATING MUST BE REPORTED TO AND REPAIRED BY MANITOBA HYDRO PRIOR TO BACKFILLING.
 - ALL EXCAVATIONS WITHIN 1.0 m OF ANY NATURAL GAS MAIN MUST BE COMPLETED BY HAND OR SOFT DIG METHODS.
- CONTRACTOR TO CONTACT JEFF SADLER OF NORSCAN INSTRUMENTS LTD. AT 233-9138 TO MARK OUT "DARK FIBRE NETWORK" PRIOR TO CONSTRUCTION.
- PROTECT EXISTING LEGAL PINS IN NEW PAVEMENT UTILIZING A WATER VALVE INSERT. GRIND OFF SYMBOL ON COVER.
- SEE P-3329-17 THROUGH 20 FOR TYPICAL CROSS-SECTIONS.



WARNING

- IF POWER EQUIPMENT OR EXPLOSIVES ARE TO BE USED FOR EXCAVATION ON THIS PROJECT THE CONTRACTOR MUST:
- NOTIFY THE GAS COMPANY OF THE PROPOSED LOCATION OF EXCAVATION.
 - TAKE PRECAUTION TO AVOID DAMAGE TO GAS COMPANY INSTALLATIONS SEE PROVINCIAL REGULATION 210/72 FOR DETAILS.
 - OBTAIN EXCAVATION PERMITS PRIOR TO CONSTRUCTION.

METRIC

WHOLE NUMBERS INDICATE MILLIMETRES
DECIMALIZED NUMBERS INDICATE METRES

150 WM	WATERMAIN	150 WM	HYDRO	HYDRO	150 WM	WATERMAIN	150 WM
300 LDS	HYDRANT VALVE	300 LDS	MTS	MTS	300 LDS	HYDRANT VALVE	300 LDS
250 WWS	LAND DRAINAGE SEWER	250 WWS			250 WWS	LAND DRAINAGE SEWER	250 WWS
	WASTE WATER SEWER					WASTE WATER SEWER	
	MANHOLE					MANHOLE	
	CATCH BASIN					CATCH BASIN	
	CURB INLET					CURB INLET	
	JUNCTIONS					JUNCTIONS	
	CULVERT					CULVERT	
100 GAS	GAS	100 GAS			100 GAS	GAS	100 GAS
EXISTING	LEGEND-PLAN	PROPOSED	EXISTING	LEGEND-PLAN	PROPOSED	EXISTING	LEGEND-PROFILE

UNDERGROUND STRUCTURES

Supp. U/G STRUCTURES COMMITTEE DATE

NOTE:
LOCATION OF UNDERGROUND STRUCTURES AS SHOWN ARE BASED ON THE BEST INFORMATION AVAILABLE, BUT NO GUARANTEE IS GIVEN THAT ALL EXISTING UTILITIES ARE SHOWN OR THAT THE GIVEN LOCATIONS ARE EXACT. CONFIRMATION OF EXISTENCE AND EXACT LOCATION OF ALL SERVICES MUST BE OBTAINED FROM THE INDIVIDUAL UTILITIES BEFORE PROCEEDING WITH CONSTRUCTION.

3	ISSUED FOR TENDER	06/08/12	DBW
2	ISSUED FOR REVIEW	05/31/12	DBW
1	ISSUED FOR REVIEW	07/28/11	DBW
NO.	REVISIONS	DATE	BY

BENCHMARK: GEODETIC MARKER # 654321
N: 5531099.483 E: 639291.865

DESIGNED BY: RTP

DRAWN BY: TJH

CHECKED BY: DBW

APPROVED BY: DPK

HOR. SCALE: 1:250

VERTICAL: 1:10

RELEASED FOR CONSTRUCTION

ENGINEER'S SEAL

PROVINCE OF MANITOBA

T.J. PETERS

06/08/2012

Member 22309

REGISTERED PROFESSIONAL ENGINEER

CONSULTANT PROJECT NUMBER: 11-4588

THE CITY OF WINNIPEG
PUBLIC WORKS DEPARTMENT

ROUNDABOUT CONSTRUCTION
GRASSIE BOULEVARD AND MOLSON STREET INTERSECTION

CITY DRAWING NUMBER: P-3329-07

SHEET 07 OF 24

CONSULTANT DRAWING NUMBER

PAVING AND GRADING - NORTH LEG

G:\CAD\114588\Contract\Current\03-Plan-Profile-North.dwg