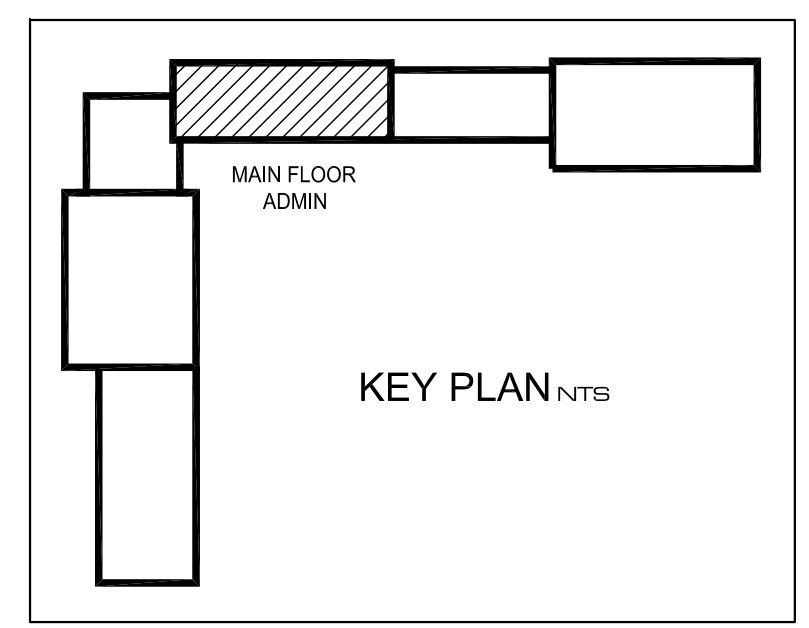


1 MAIN FLOOR REFLECTED CEILING PLAN (ADMINISTRATIVE BLOCK)
 A3.1 SCALE: 1:100



| REV | DESCRIPTION | DATE | BY |
|-----|---------------------------|--------------|----|
| 5 | ISSUED FOR REVIEW | 08 JUNE 2012 | MM |
| 4 | ISSUED FOR DRAWING REVIEW | JUN 1, 2012 | MM |
| 3 | DRAWING UPDATE | APR 18, 2012 | IC |
| 2 | ISSUED FOR 66% REVIEW | MAR 05, 2012 | MD |
| 1 | ISSUED FOR 33% REVIEW | 05 JAN 2012 | MD |



3 TERRACON PLACE
 WINNIPEG, CANADA R2J 4B3
 TEL. (204) 233 7881
 FAX (204) 233 4733
 general@ehansch.com
 www.ehansch.com

CLIENT: CITY OF WINNIPEG
 PUBLIC WORKS DEPARTMENT
 PROJECT NUMBER: 1511
 DRAWN BY: MD
 DATE: JAN. 5, 2012
 SCALE: AS SHOWN

PROJECT TITLE:
 CITY OF WINNIPEG
 PUBLIC WORKS EAST YARD COMPLEX
 MAIN OFFICE & GARAGES
 SHEET TITLE:
 REFLECTED CEILING PLAN
 MAIN FLOOR ADMINISTRATIVE BLOCK

SHEET NUMBER:
A3.1
 REVISION NUMBER: RO