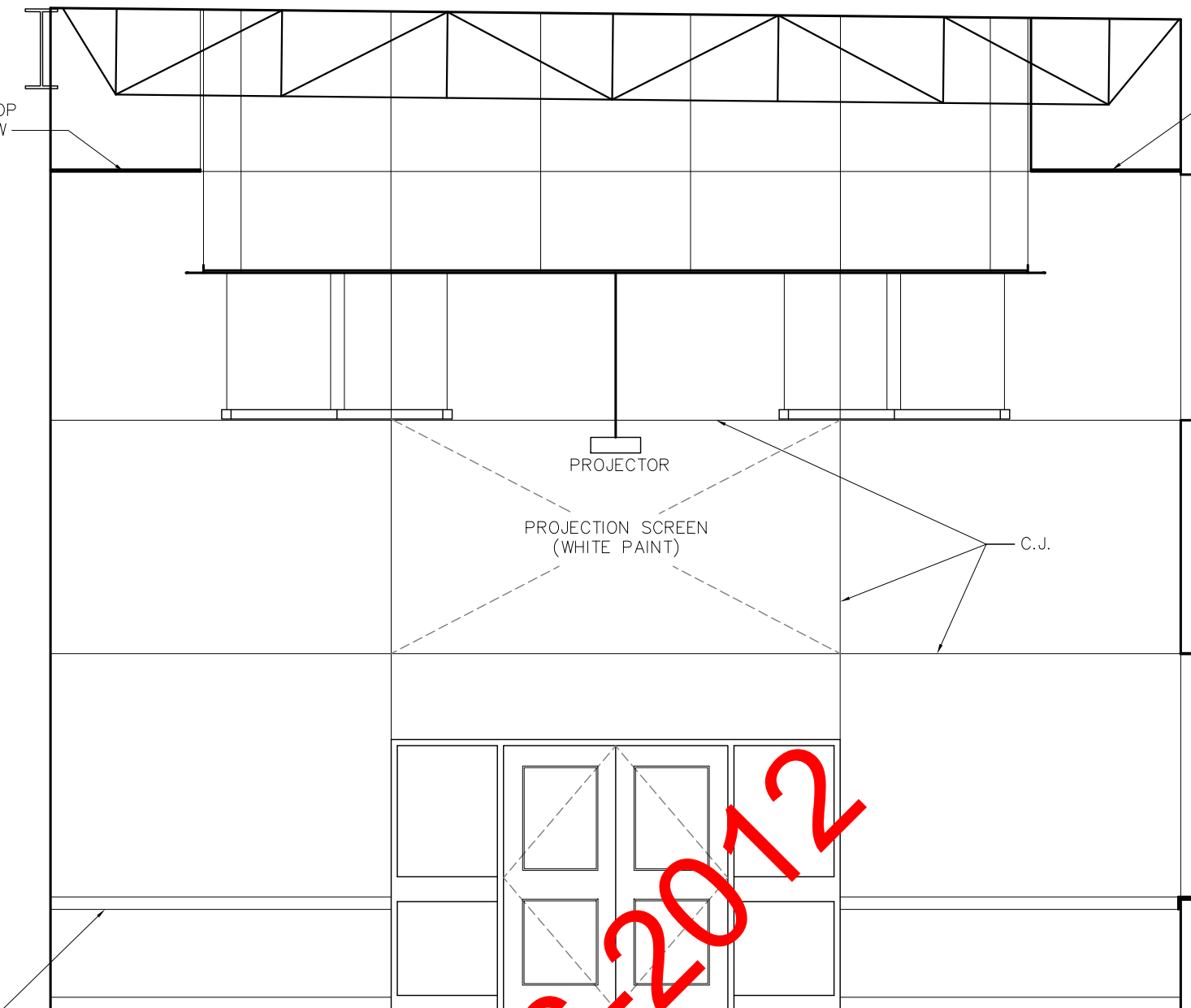
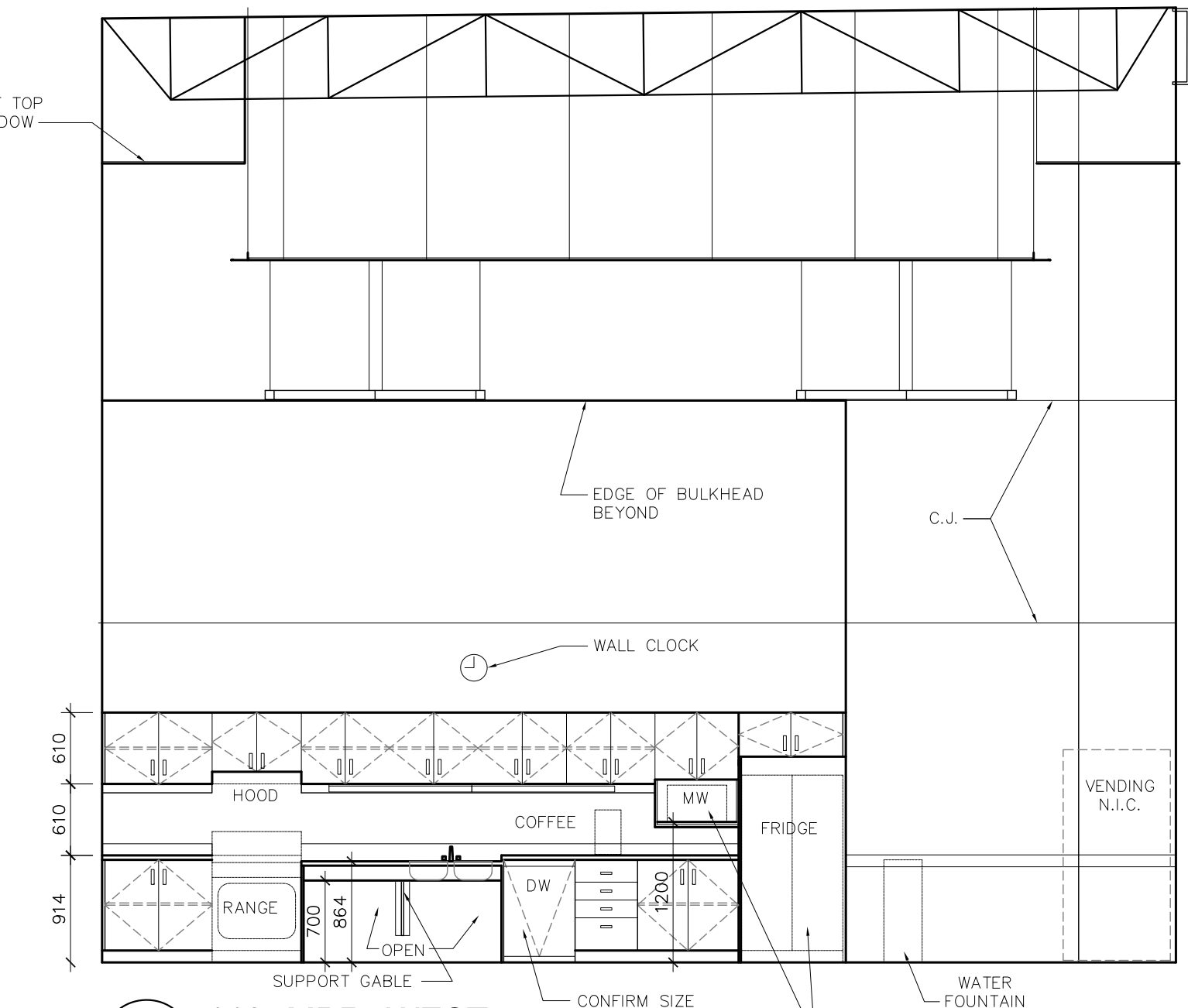


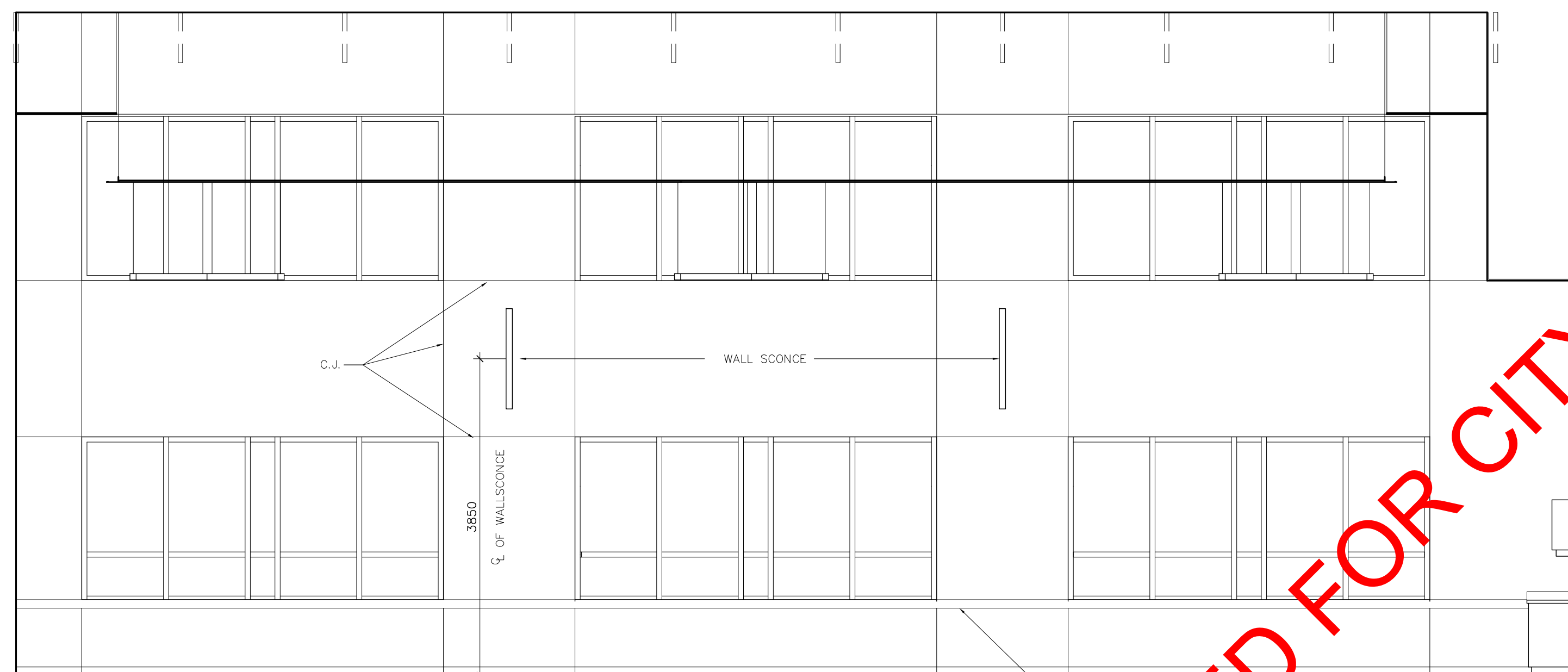
1 119-MPR-NORTH
8.2 SCALE: 1:50



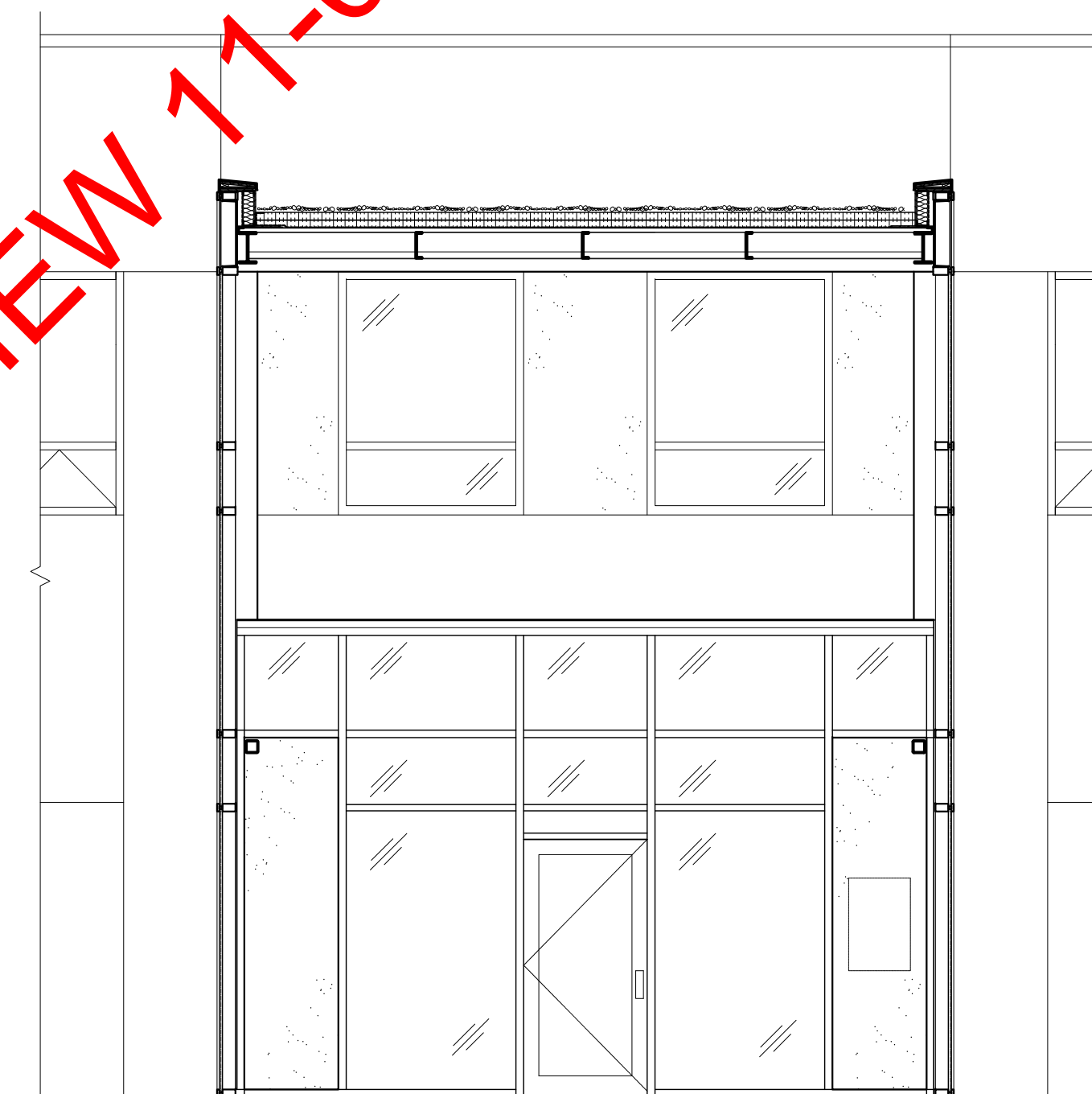
2 119-MPR-EAST
8.2 SCALE: 1:50



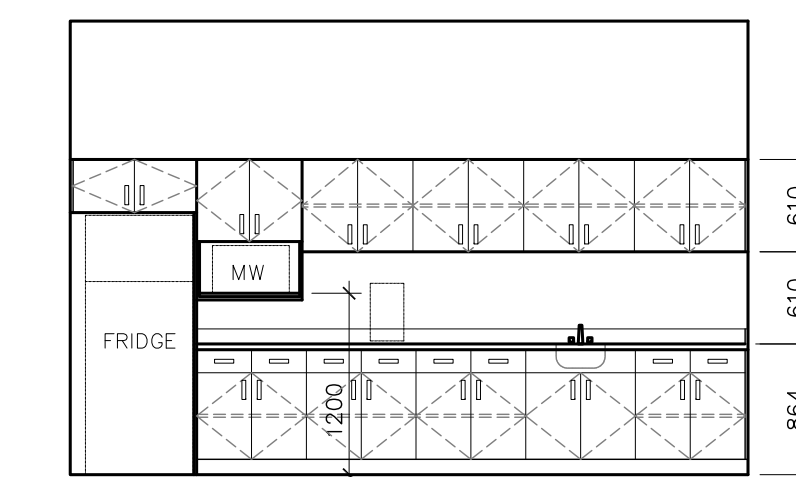
3 119-MPR-WEST
8.2 SCALE: 1:50



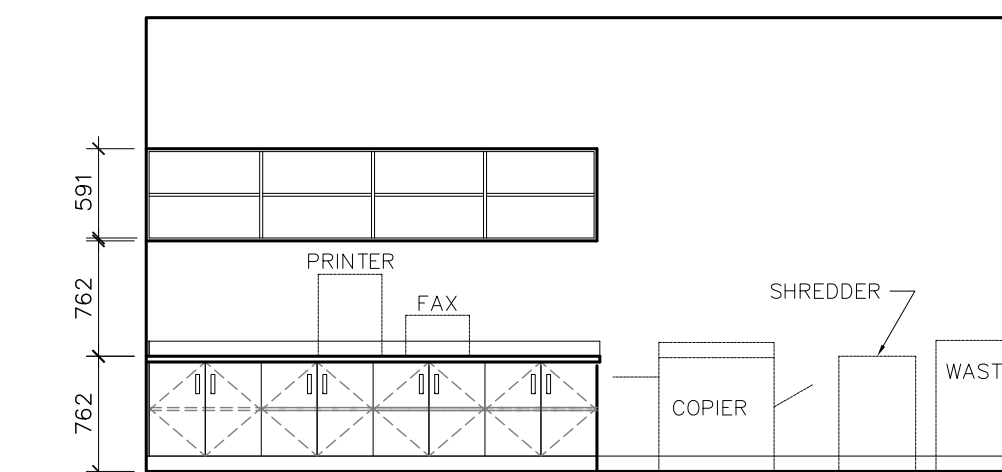
4 119-MPR-SOUTH
8.2 SCALE: 1:50



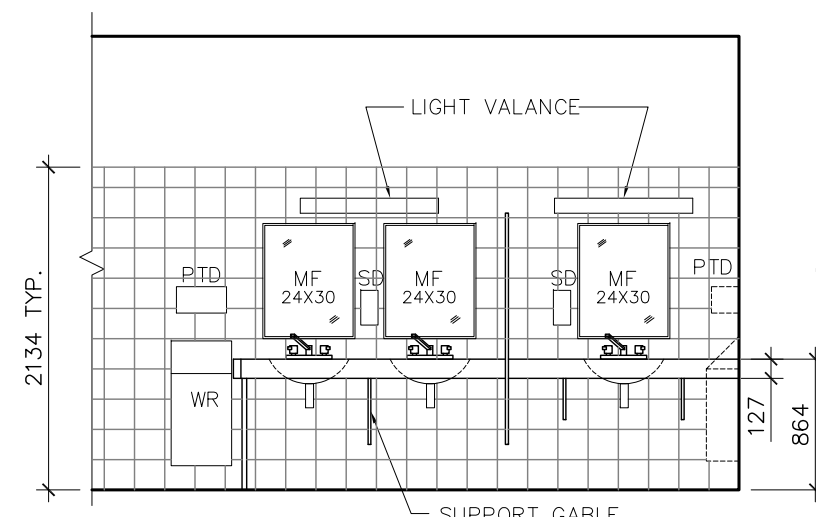
5 101 FRONT VESTIBULE-SOUTH
8.2 SCALE: 1:50



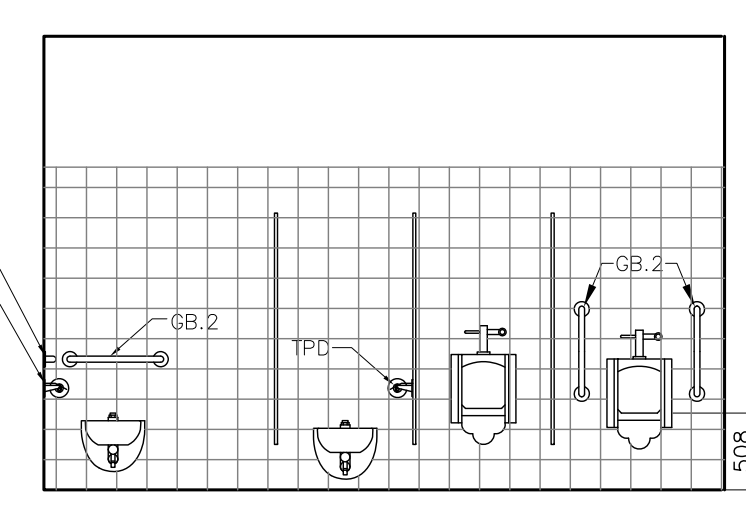
6 208 KITCHENETTE-SOUTH
8.2 SCALE: 1:50



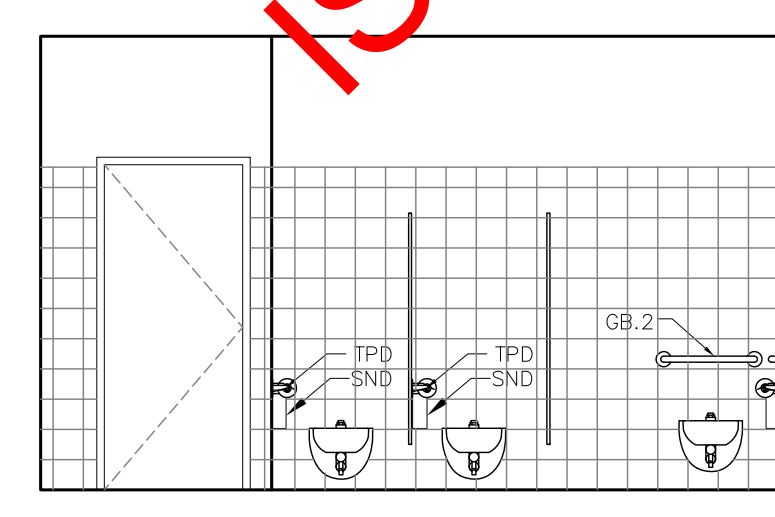
7 214 COPY-SOUTH
8.2 SCALE: 1:50



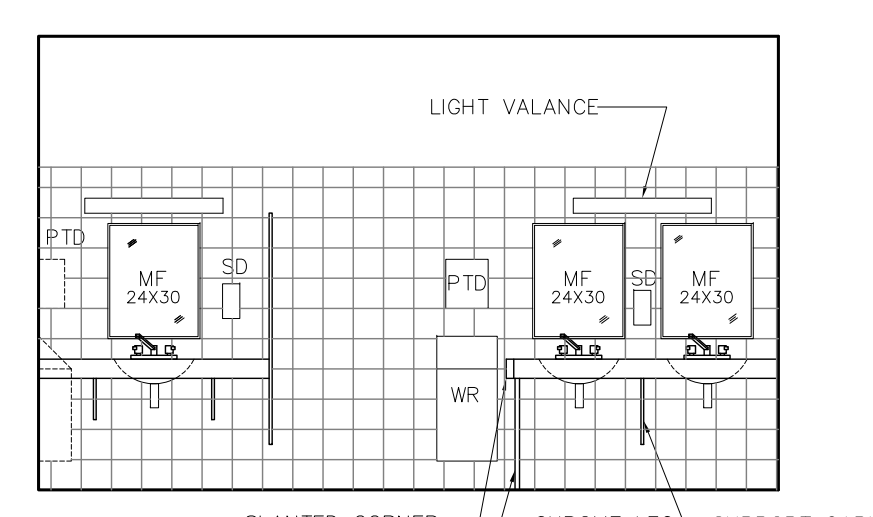
8 211 WC-NORTH
8.2 SCALE: 1:50



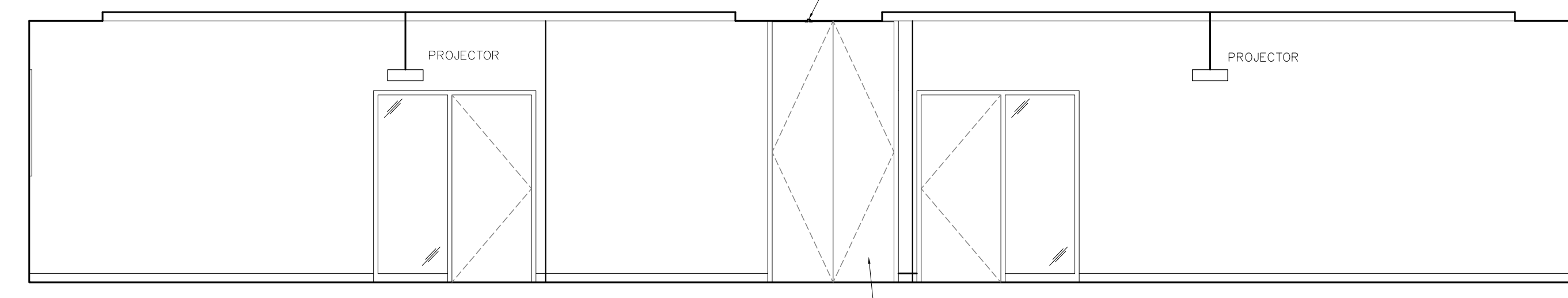
9 211 WC-SOUTH
8.2 SCALE: 1:50



10 212 WC-NORTH
8.2 SCALE: 1:50



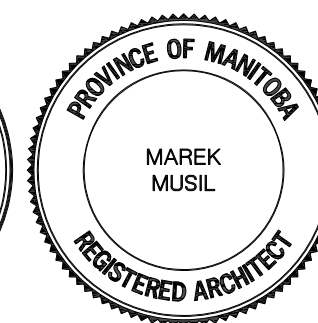
11 212 WC-SOUTH
8.2 SCALE: 1:50



12 204A / 204B LARGE MEETING ROOM-SOUTH
8.2 SCALE: 1:50

ISSUED FOR CITY REVIEW 11-06-2012

REV	DESCRIPTION	DATE	BY
5	ISSUED FOR REVIEW	08 JUNE 2012	MM
4	ISSUED FOR DRAWING REVIEW	JUN 1, 2012	MM
3	DRAWINGS UPDATE	18 APR 2012	IC
2	ISSUED FOR 66% REVIEW	MAR 5 2012	MD
1	ISSUED FOR 33% REVIEW	05 JAN 2012	MD



3 TERRACON PLACE
WINNIPEG, CANADA R2J 4B3
TEL. (204) 233 7881
FAX (204) 233 4733
general@ehansch.com
www.ehansch.com

CLIENT: CITY OF WINNIPEG
PUBLIC WORKS DEPARTMENT
PROJECT NUMBER: 1511
DRAWN BY: MD
DATE: JAN. 5, 2012
SCALE: AS SHOWN

PROJECT TITLE:
CITY OF WINNIPEG
PUBLIC WORKS EAST YARD COMPLEX
MAIN OFFICE & GARAGES
SHEET TITLE:
INTERIOR ELEVATIONS

SHEET NUMBER:

A8.2

REVISION NUMBER: RO