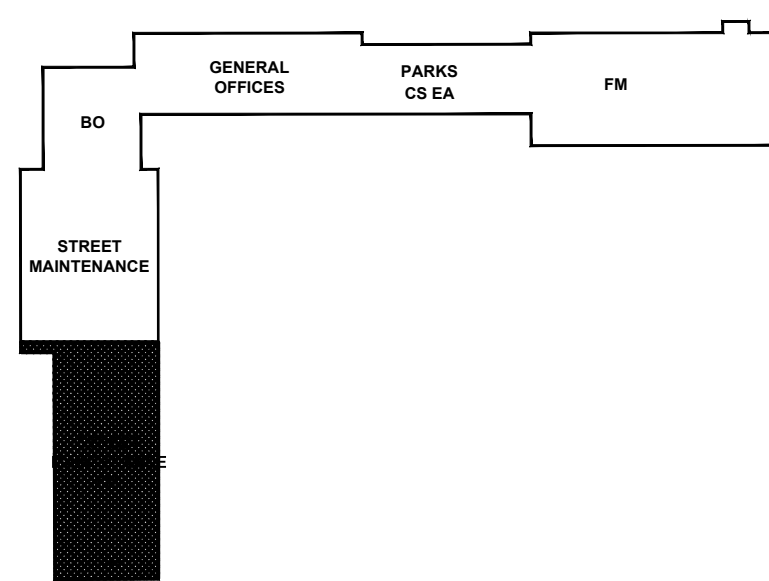
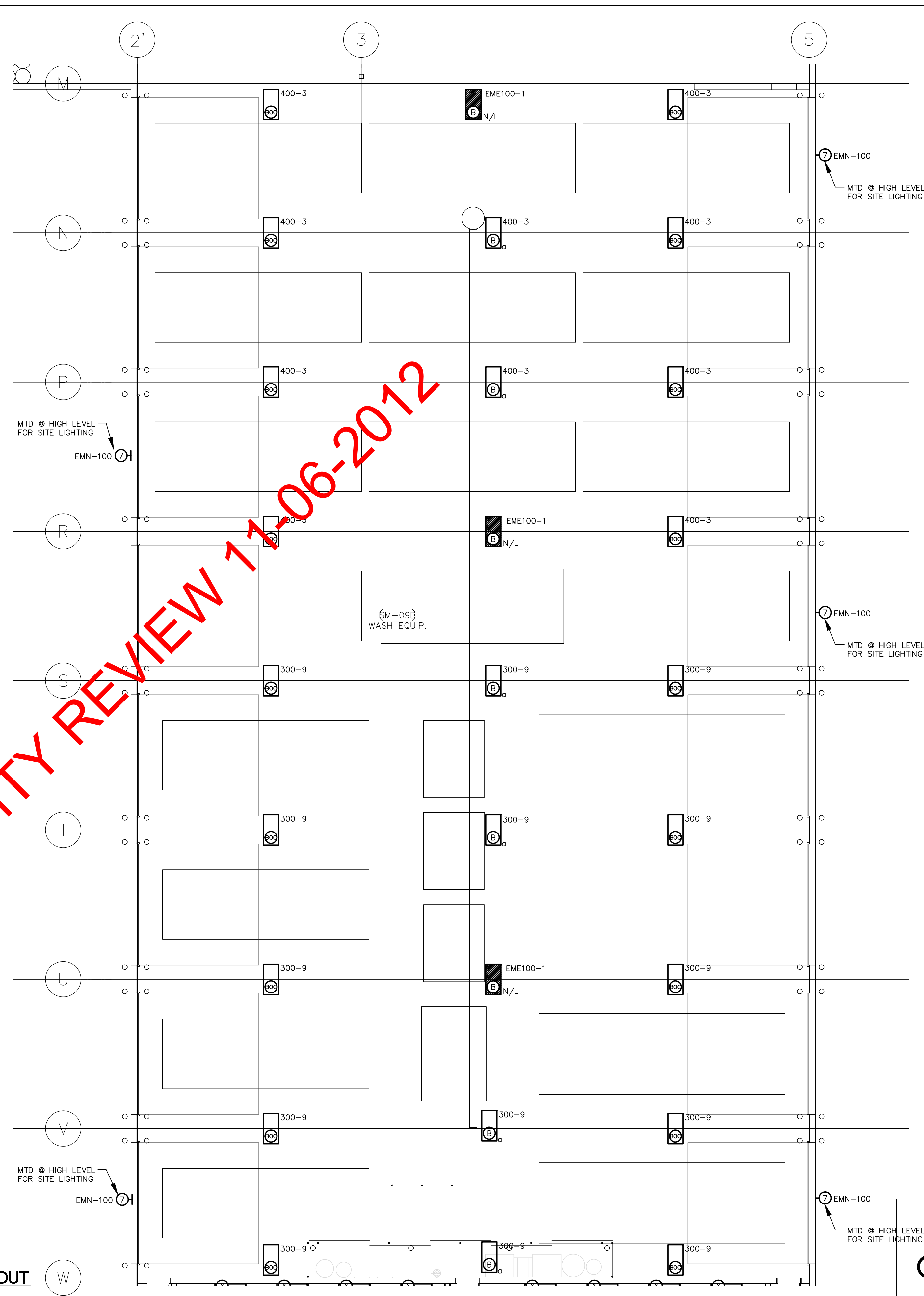


1
E2.0
PARTIAL MAIN FLOOR PLAN
VEHICLE WASH - LIGHTING LAYOUT
SCALE: 1/100



3
E2.0
KEY PLAN
SCALE: 1/2000



2
E2.0
PARTIAL MAIN FLOOR PLAN
STREET MAINTENANCE - LIGHTING LAYOUT
SCALE: 1/100

ISSUED FOR CITY REVIEW 11-06-2012

NOT FOR
CONSTRUCTION

REV	DESCRIPTION	DATE	BY
3	ISSUED FOR 99% REVIEW	2012.06.04	MZ
2	ISSUED FOR 66% REVIEW	2012.03.06	MZ
1	ISSUED FOR 33% REVIEW	2012.01.06	MZ

NOVA 3 ENGINEERING LTD.
CONSULTING ENGINEERS
201-120 FORT STREET WINNIPEG, MANITOBA R3C 1C7
TEL: (204) 943-6142 FAX: (204) 942-1276 JN.: 31-173
THIS DRAWING IS THE EXCLUSIVE PROPERTY OF NOVA 3 ENGINEERING LTD. AND MAY ONLY BE REPRODUCED WITH THE WRITTEN PERMISSION OF NOVA 3 ENGINEERING LTD.
THE CONCEPT AND DESIGN INCORPORATED INTO THIS DRAWING ARE BASED ON INFORMATION PROVIDED BY THE CLIENT AND OTHER RELATED SOURCES. PROFESSIONAL ENGINEER ACCEPTS NO RESPONSIBILITY FOR DRAWING AND DESIGN UNLESS DRAWING IS ACCOMPANIED BY ORIGINAL SEALED AND SIGNED LETTER OF INTENT AND CERTIFICATE OF INSPECTION. REFER TO WWW.NOVA3.CA FOR CAUTIONARY NOTES.

APEGM
Certificate of Authorization
Nova 3 Engineering Ltd.
No. 962 Date: _____

**ERNST
HANSCH
CONSTRUCTION LTD.**

3 TERRACON PLACE
WINNIPEG, CANADA R2J 4B3
TEL. (204) 233 7881
FAX (204) 233 4733
general@ehansch.com
www.ehansch.com

CLIENT: CITY OF WINNIPEG
PUBLIC WORKS DEPARTMENT
PROJECT NUMBER: 31-178E
DRAWN BY: KC
DATE: MARCH 06, 2012
SCALE: AS SHOWN

PROJECT TITLE:
CITY OF WINNIPEG
PUBLIC WORKS EAST YARD COMPLEX
MAIN OFFICE & GARAGES
SHEET TITLE:
MAIN FLOOR LIGHTING LAYOUT

SHEET NUMBER:
E2.0
REVISION NUMBER:
0