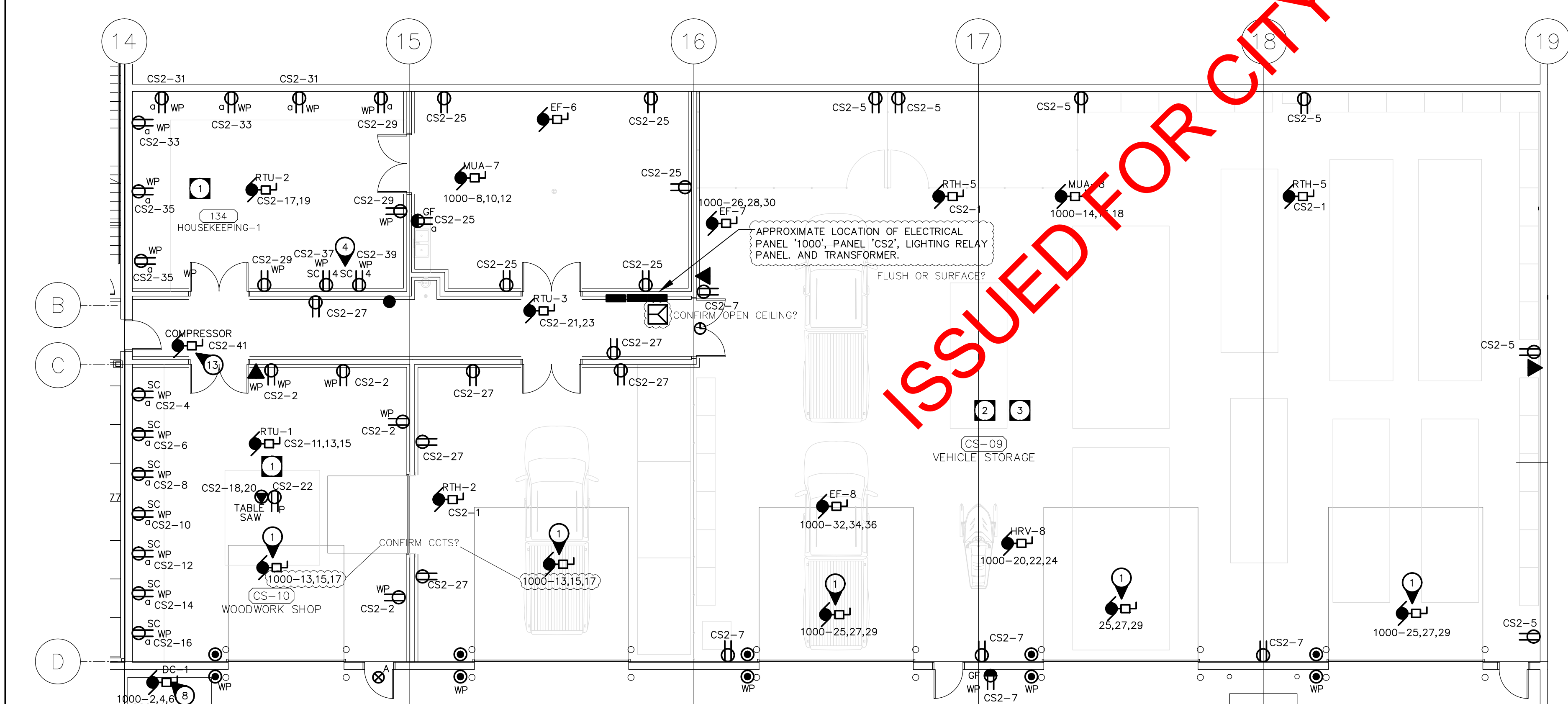


**HAZARDOUS LOCATION ELECTRICAL NOTES**

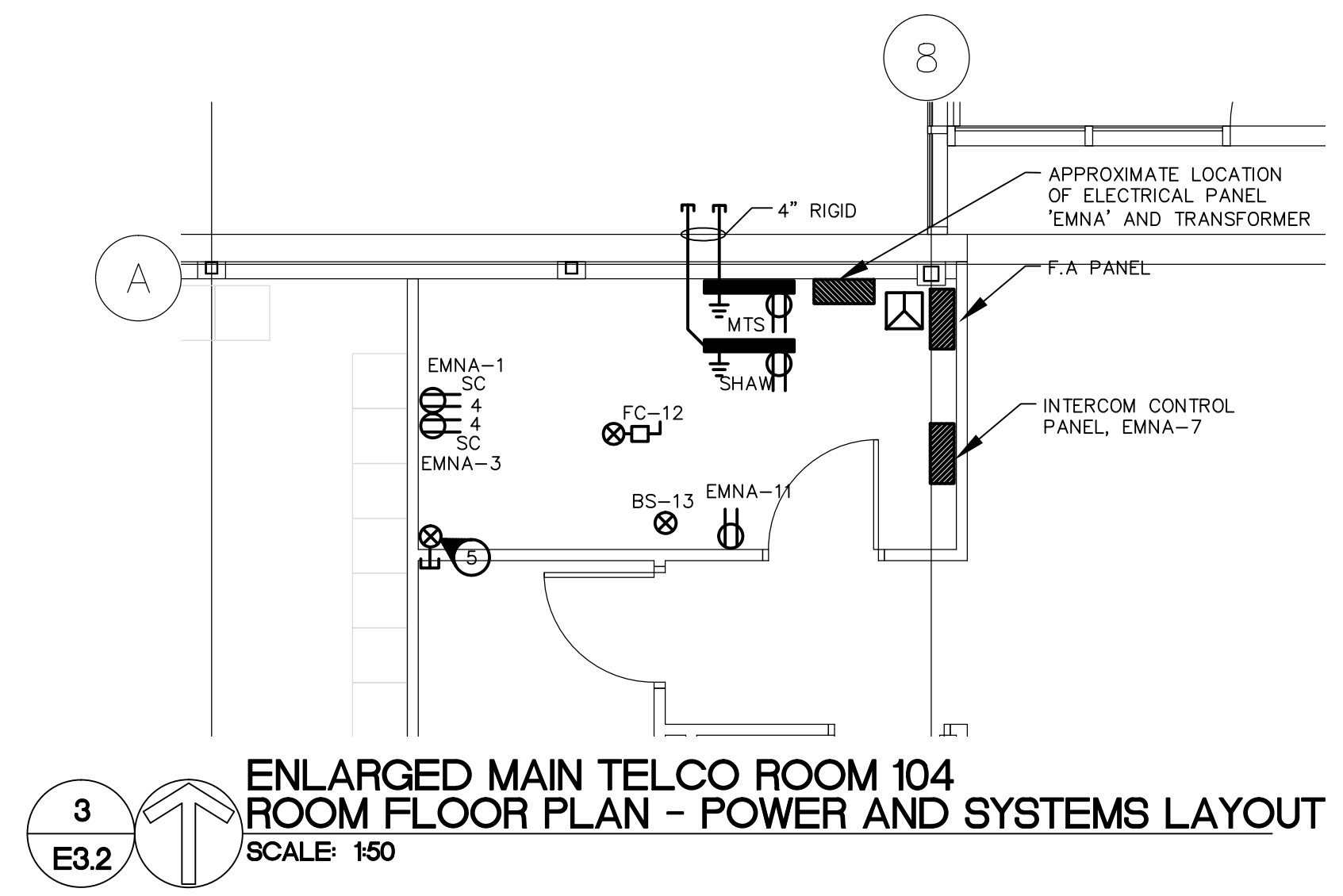
- 1 ALL WIRING AND EQUIPMENT IN WOODWORKING AREA TO MEET ELECTRICAL HAZARDOUS LOCATION WIRING FOR CLASS III, DIV. 1, AS RELAXED FOR AN AREA WITH DUST COLLECTION. BOXES SHALL BE CAST, COUPLINGS AND CONNECTIONS SHALL BE WEATHERPROOF. FLEXIBLE CONDUIT SHALL BE TECK. ALL ENCLOSURES AND COVERPLATES SHALL BE WEATHERPROOF.
- 2 ALL WIRING IN BAYS TO COMPLY WITH C.E.C. 20-102. AREA FROM FINISHED FLOOR TO 50mm ABOVE FINISHED FLOOR TO BE HAZARDOUS AREA CLASS 1, ZONE 2. AREA BELOW FLOOR TO BE HAZARDOUS AREA CLASS 1, ZONE 1.
- 3 OVERHEAD DOORS ARE LOCKED OUT WHENEVER THIS AREA IS ARMED BY THE INTRUSION ALARM.

**SPECIFIC ELECTRICAL NOTES**

- 1 WIRE AND CONNECT OVERHEAD DOOR MOTOR AND ALL ASSOCIATED CONTROLS AS REQUIRED. CONFIRM EXACT ELECTRICAL REQUIREMENTS WITH MANUFACTURERS SPECIFICATIONS PRIOR TO ROUGH-IN.
- 2 TWO(2) QUAD RECEPTACLES MOUNTED IN MILLWORK FOR RADIO CHARGERS. COORDINATE LOCATION WITH MILLWORK SHOP DRAWINGS PRIOR TO ROUGH-IN.
- 3 CONFIRM LOCATION.
- 4 TWO(2) QUAD SEPARATE CIRCUIT RECEPTACLES FOR BATTERY CHARGING STATION.
- 5 RUN ONE 2" C/W FIBRE OPTIC CABLE TO 2ND FLOOR TELECOM ROOM LOCATION IN "0A" OF FLEET MANAGEMENT BETWEEN GRID LINES '25' AND '26'.
- 6 WIRE & CONNECT HANDICAP DOOR OPERATORS AND ALL ASSOCIATED CONTROLS, AS REQUIRED. CONFIRM EXACT ELECTRICAL REQUIREMENTS WITH MANUFACTURERS SPECIFICATIONS PRIOR TO ROUGH-IN.
- 7 NOT USED.
- 8 WIRE AND CONNECT DUST COLLECTOR AND ALL ASSOCIATED CONTROLS AS REQUIRED. REFER TO MANUFACTURERS SPECIFICATIONS PRIOR TO ROUGH-IN.
- 9 WIRE AND CONNECT TRANSFORMER FOR LAV. AND ALL ASSOCIATED CONTROLS AS REQUIRED. CONFIRM EXACT ELECTRICAL REQUIREMENTS WITH MANUFACTURERS SPECIFICATIONS PRIOR TO ROUGH-IN.
- 10 POWER AND DATA DEVICES LOCATED AT HIGH LEVEL FOR PROJECTOR. WIRE AND CONNECT MOTORIZED SCREEN AND ALL ASSOCIATED CONTROLS, AS REQUIRED. COORDINATE EXACT ELECTRICAL REQUIREMENTS WITH MANUFACTURERS SPECIFICATIONS PRIOR TO ROUGH-IN.
- 11 REFER TO ENLARGED PLAN ON DRAWING E3.2 FOR ELECTRICAL REQUIREMENTS IN THIS ROOM.
- 12 NOT USED.
- 13 WIRE AND CONNECT SPRINKLER SYSTEM COMPRESSOR AND ALL ASSOCIATED CONTROLS, AS REQUIRED. CONFIRM EXACT ELECTRICAL REQUIREMENTS WITH THE SPRINKLER SYSTEM MANUFACTURER PRIOR TO ROUGH-IN.



1 E3.2 ADMINISTRATIVE BLOCK FLOOR PLAN - POWER AND SYSTEMS LAYOUT SCALE: 1/100



3 E3.2 ENLARGED MAIN TELCO ROOM 104 ROOM FLOOR PLAN - POWER AND SYSTEMS LAYOUT SCALE: 1/50

4 E3.2 KEY PLAN SCALE: 1/2000

2 E3.2 PARKS GARAGES FLOOR PLAN - POWER AND SYSTEMS LAYOUT SCALE: 1/100

**NOT FOR CONSTRUCTION**

REV	DESCRIPTION	DATE	BY
3	ISSUED FOR 99% REVIEW	2012.06.04	MZ
2	ISSUED FOR 66% REVIEW	2012.03.06	MZ
1	ISSUED FOR 33% REVIEW	2012.01.06	MZ

**NOVA 3 ENGINEERING LTD.**  
 CONSULTING ENGINEERS  
 201-120 FORT STREET  
 WINNIPEG, MANITOBA R3C 1C7  
 TEL: (204) 943-8142  
 FAX: (204) 942-1276  
 JN.: 31-173  
 THIS DRAWING IS THE EXCLUSIVE PROPERTY OF NOVA 3 ENGINEERING LTD. AND MAY ONLY BE REPRODUCED WITH THE WRITTEN PERMISSION OF NOVA 3 ENGINEERING LTD.  
 THE CONCEPT AND DESIGN INCORPORATED INTO THIS DRAWING ARE BASED ON INFORMATION PROVIDED BY THE CLIENT AND OTHER RELATED SOURCES. PROFESSIONAL ENGINEER ACCEPTS NO RESPONSIBILITY FOR DRAWING AND DESIGN UNLESS DRAWING IS ACCOMPANIED BY ORIGINAL SEALED AND SIGNED LETTER OF INTENT AND CERTIFICATE OF INSPECTION. REFER TO WWW.NOVA3.CA FOR CAUTIONARY NOTES.

**ERNST HANSCH CONSTRUCTION LTD.**

3 TERRACON PLACE  
 WINNIPEG, CANADA R2J 4B3  
 TEL. (204) 233 7881  
 FAX (204) 233 4733  
 general@ehansch.com  
 www.ehansch.com

CLIENT: CITY OF WINNIPEG  
 PUBLIC WORKS DEPARTMENT  
 PROJECT NUMBER: 31-178E  
 DRAWN BY: KC  
 DATE: MARCH 06, 2012  
 SCALE: AS SHOWN

PROJECT TITLE:  
 CITY OF WINNIPEG  
 PUBLIC WORKS EAST YARD COMPLEX  
 MAIN OFFICE & GARAGES  
 SHEET TITLE:  
 MAIN FLOOR POWER & SYSTEMS LAYOUT

SHEET NUMBER:  
**E3.2**  
 REVISION NUMBER:  
 0