

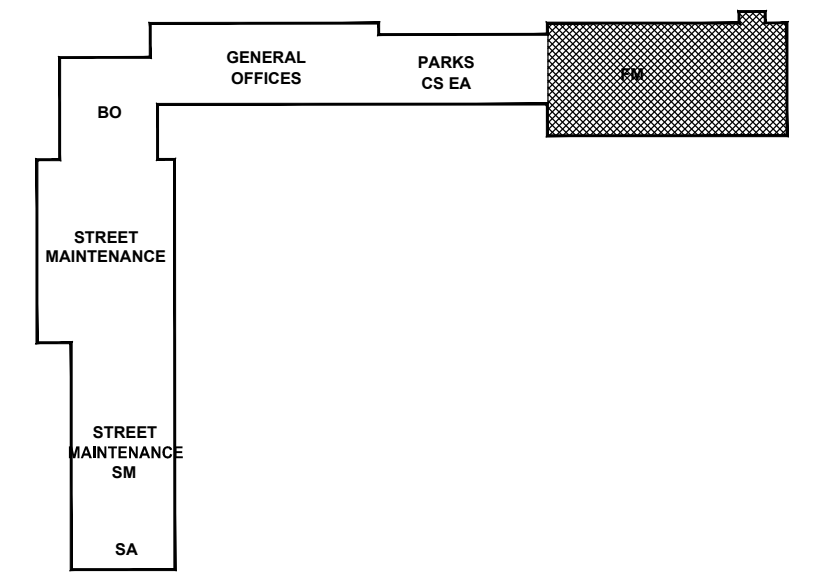
**1**  
E3.4 **FLEET MANAGEMENT FLOOR PLAN - POWER AND SYSTEMS LAYOUT**  
SCALE: 1:100

**SPECIFIC ELECTRICAL NOTES**

- 1 WIRE AND CONNECT OVERHEAD DOOR MOTOR AND ALL ASSOCIATED CONTROLS AS REQUIRED. CONFIRM EXACT ELECTRICAL REQUIREMENTS WITH MANUFACTURERS SPECIFICATIONS PRIOR TO ROUGH IN.
- 2 WIRE AND CONNECT TRANSFORMER FOR LAV. AND ALL ASSOCIATED CONTROLS AS REQUIRED. CONFIRM EXACT ELECTRICAL REQUIREMENTS WITH MANUFACTURERS SPECIFICATIONS PRIOR TO ROUGH IN.
- 3 WIRE AND CONNECT CRANE MOTOR AND ALL ASSOCIATED CONTROLS AS REQUIRED. CONFIRM EXACT ELECTRICAL REQUIREMENTS WITH MANUFACTURERS SPECIFICATIONS PRIOR TO ROUGH IN.
- 4 NOT USED.

**HAZARDOUS LOCATION ELECTRICAL NOTES**

- 1 ALL WIRING IN BAYS TO COMPLY WITH C.E.C. 20-102. AREA FROM FINISHED FLOOR TO 50mm ABOVE FINISHED FLOOR TO BE HAZARDOUS AREA CLASS 1 ZONE 2. AREA BELOW FLOOR TO BE HAZARDOUS AREA CLASS 1 ZONE 1.
- 2 OVERHEAD DOORS ARE LOCKED OUT WHENEVER THIS AREA IS ARMED BY THE INTRUSION ALARM.



**2**  
E3.4 **KEY PLAN**  
SCALE: 1:2000

**NOT FOR CONSTRUCTION**

REV	DESCRIPTION	DATE	BY
3	ISSUED FOR 99% REVIEW	2012.06.04	MZ
2	ISSUED FOR 66% REVIEW	2012.03.06	MZ
1	ISSUED FOR 33% REVIEW	2012.01.06	MZ

**NOVA 3 ENGINEERING LTD.**  
CONSULTING ENGINEERS  
201-120 FORT STREET  
WINNIPEG, MANITOBA R3C 1C7  
TEL: (204) 943-8142  
FAX: (204) 942-1276  
JN.: 31-173  
THIS DRAWING IS THE EXCLUSIVE PROPERTY OF NOVA 3 ENGINEERING LTD. AND MAY ONLY BE REPRODUCED WITH THE WRITTEN PERMISSION OF NOVA 3 ENGINEERING LTD.  
THE CONCEPT AND DESIGN INCORPORATED INTO THIS DRAWING ARE BASED ON INFORMATION PROVIDED BY THE CLIENT AND OTHER RELATED SOURCES. PROFESSIONAL ENGINEER ACCEPTS NO RESPONSIBILITY FOR DRAWING AND DESIGN UNLESS DRAWING IS ACCOMPANIED BY ORIGINAL SEALED AND SIGNED LETTER OF INTENT AND CERTIFICATE OF INSPECTION. REFER TO WWW.NOVA3.CA FOR CAUTIONARY NOTES.

**APEGM**  
Certificate of Authorization  
Nova 3 Engineering Ltd.  
No. 962 Date: \_\_\_\_\_

**ERNST HANSCH**  
CONSTRUCTION LTD.

3 TERRACON PLACE  
WINNIPEG, CANADA R2J 4B3  
TEL. (204) 233 7881  
FAX (204) 233 4733  
general@ehansch.com  
www.ehansch.com

CLIENT: CITY OF WINNIPEG  
PUBLIC WORKS DEPARTMENT  
PROJECT NUMBER: 31-178E  
DRAWN BY: KC  
DATE: MARCH 06, 2012  
SCALE: AS SHOWN

PROJECT TITLE:  
CITY OF WINNIPEG  
PUBLIC WORKS EAST YARD COMPLEX  
MAIN OFFICE & GARAGES  
SHEET TITLE:  
**MAIN FLOOR POWER & SYSTEMS LAYOUT**

SHEET NUMBER:  
**E3.4**  
REVISION NUMBER:  
0