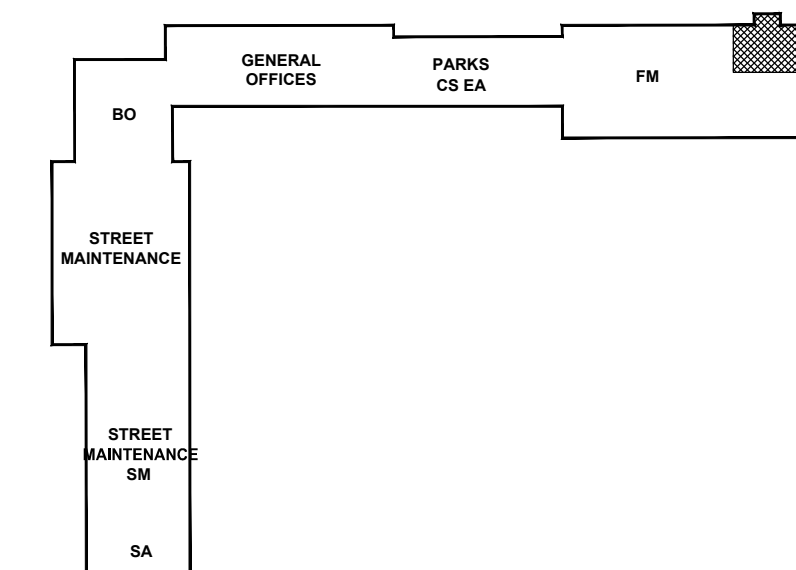


ISSUED FOR CITY REVIEW 11-06-2012

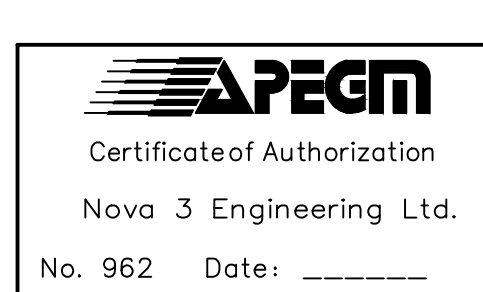
1
E3.5.2 **PARTIAL SECOND FLOOR PLAN
FLEET MANAGEMENT - SECURITY LAYOUT**
SCALE: 1/100



2
E3.5.2 **KEY PLAN**
SCALE: 1/2000

NOT FOR
CONSTRUCTION

REV	DESCRIPTION	DATE	BY
3	ISSUED FOR 99% REVIEW	2012.06.04	MZ
2	ISSUED FOR 66% REVIEW	2012.03.06	MZ
1	ISSUED FOR 33% REVIEW	2012.01.06	MZ



NOVA 3 ENGINEERING LTD.
CONSULTING ENGINEERS
201-120 FORT STREET TEL: (204) 943-8142
WINNIPEG, MANITOBA FAX: (204) 942-1276
R3C 1C7 JN: 31-173
THIS DRAWING IS THE EXCLUSIVE PROPERTY OF NOVA 3 ENGINEERING LTD. AND MAY ONLY BE REPRODUCED WITH THE WRITTEN PERMISSION OF NOVA 3 ENGINEERING LTD.
THE CONCEPT AND DESIGN INCORPORATED INTO THIS DRAWING ARE BASED ON INFORMATION PROVIDED BY THE CLIENT AND OTHER RELATED SOURCES. PROFESSIONAL ENGINEER ACCEPTS NO RESPONSIBILITY FOR DRAWING AND DESIGN UNLESS DRAWING IS ACCOMPANIED BY ORIGINAL SEALED AND SIGNED LETTER OF INTENT AND CERTIFICATE OF INSPECTION. REFER TO WWW.NOVA3.CA FOR CAUTIONARY NOTES.



3 TERRACON PLACE
WINNIPEG, CANADA R2J 4B3
TEL. (204) 233 7881
FAX (204) 233 4733
general@ehansch.com
www.ehansch.com

CLIENT: CITY OF WINNIPEG
PUBLIC WORKS DEPARTMENT
PROJECT NUMBER: 31-178E
DRAWN BY: KC
DATE: MARCH 06, 2012
SCALE: AS SHOWN

PROJECT TITLE:
CITY OF WINNIPEG
PUBLIC WORKS EAST YARD COMPLEX
MAIN OFFICE & GARAGES
SHEET TITLE:
SECOND FLOOR SECURITY LAYOUT

SHEET NUMBER:

E3.5.2

REVISION NUMBER:

0