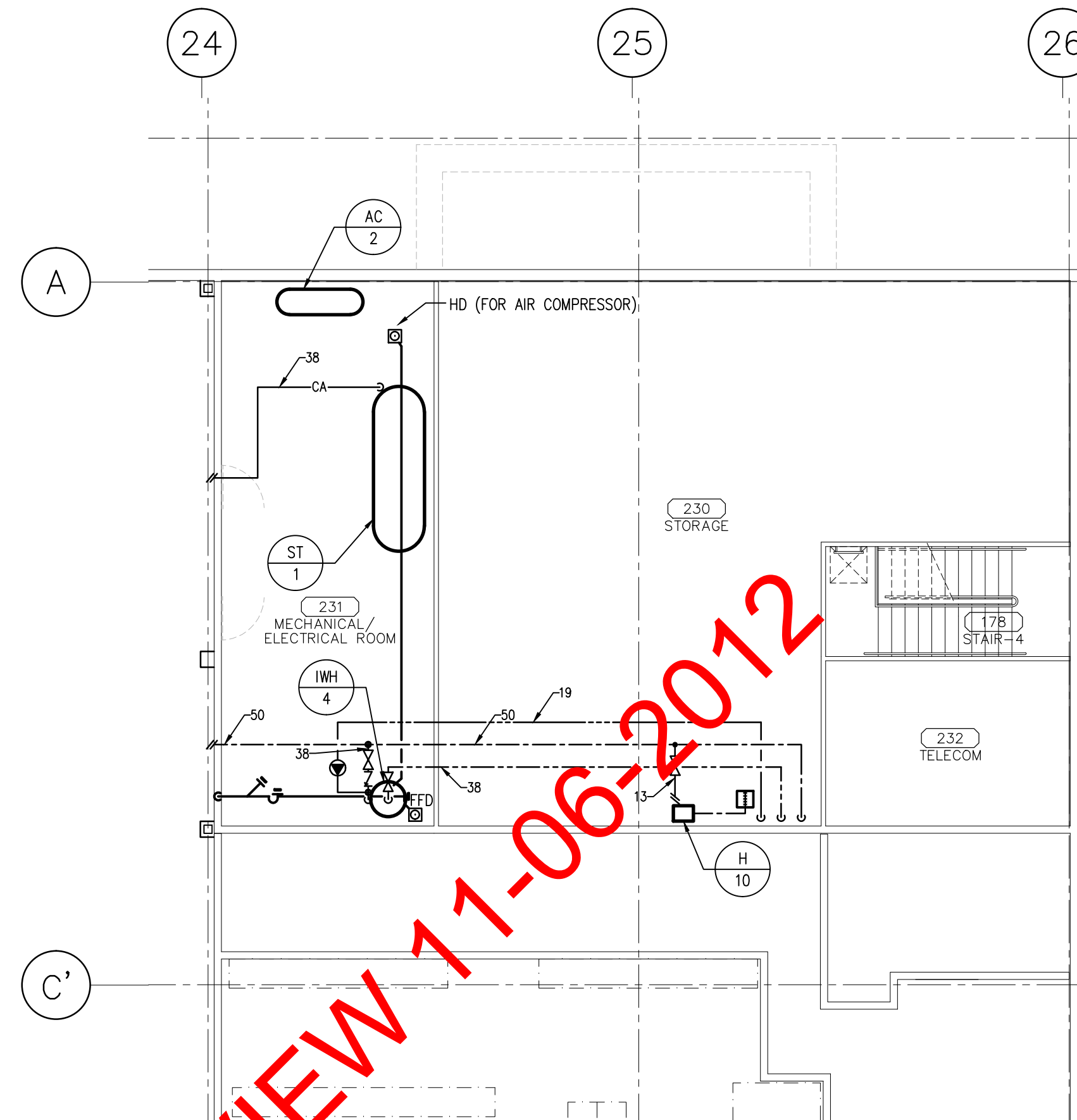
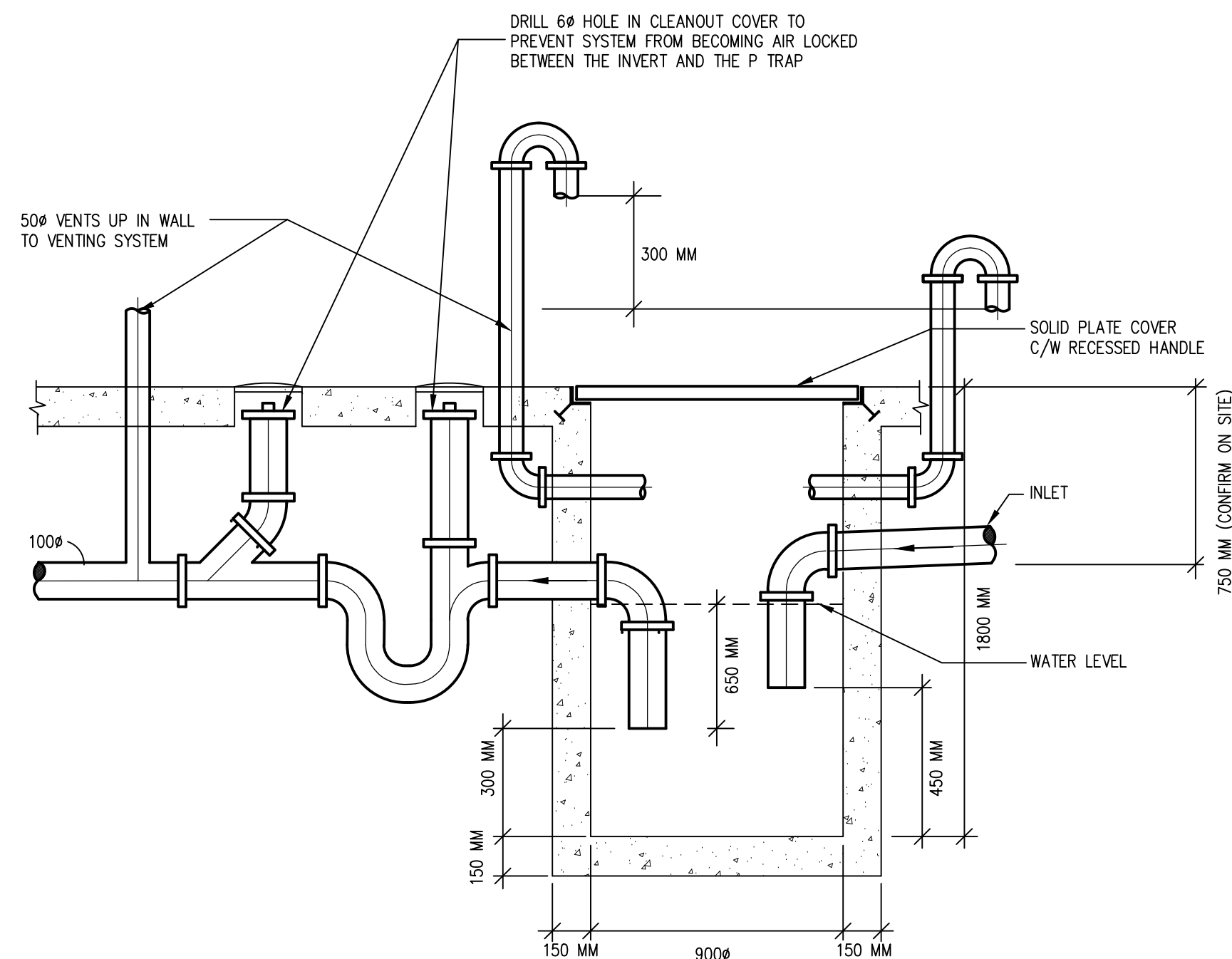
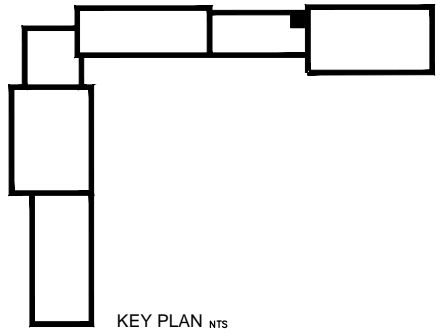


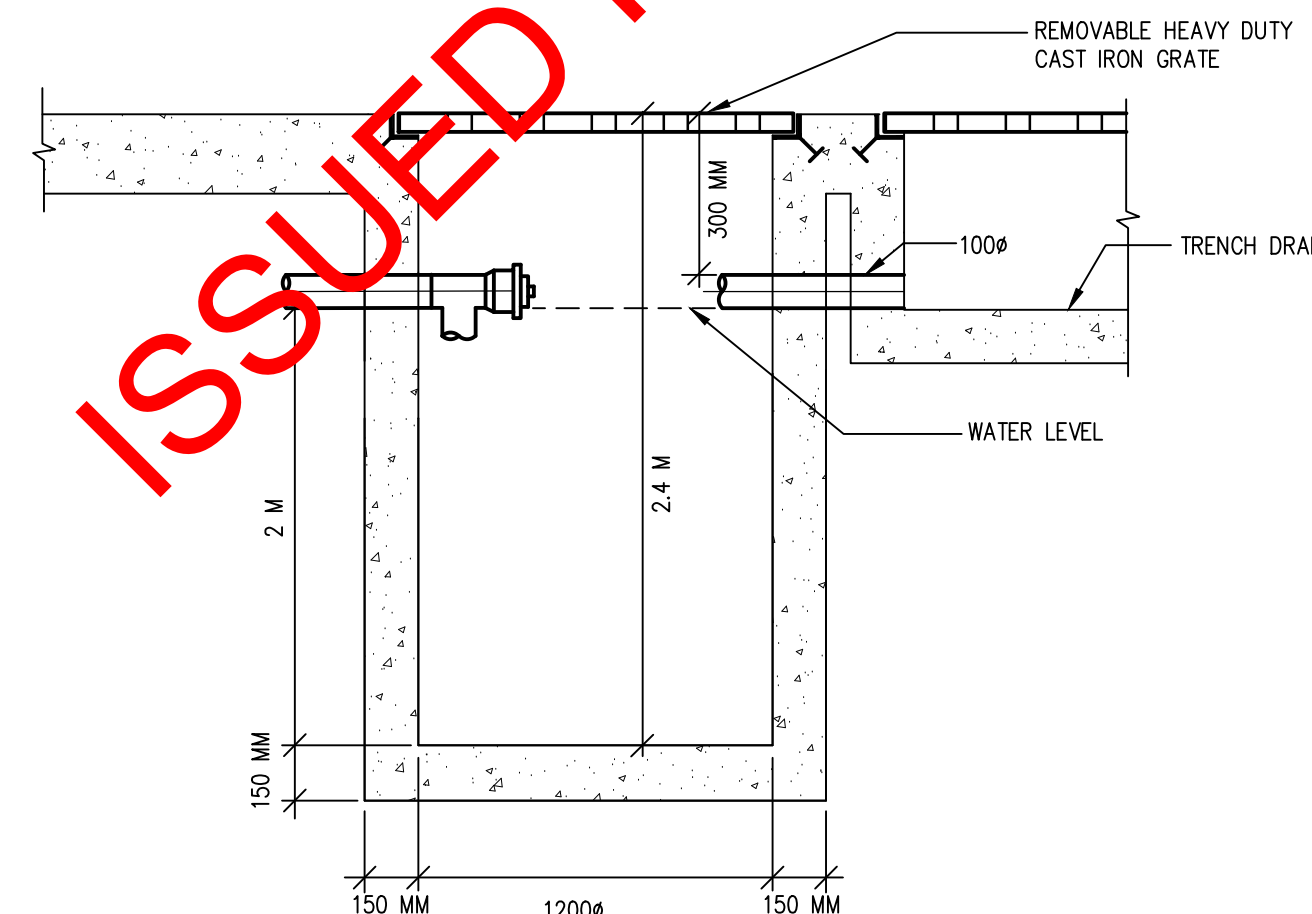
**FLOOR PLAN (CS-14 AND EA-09 SHARED) - PLUMBING**  
SCALE 1:100



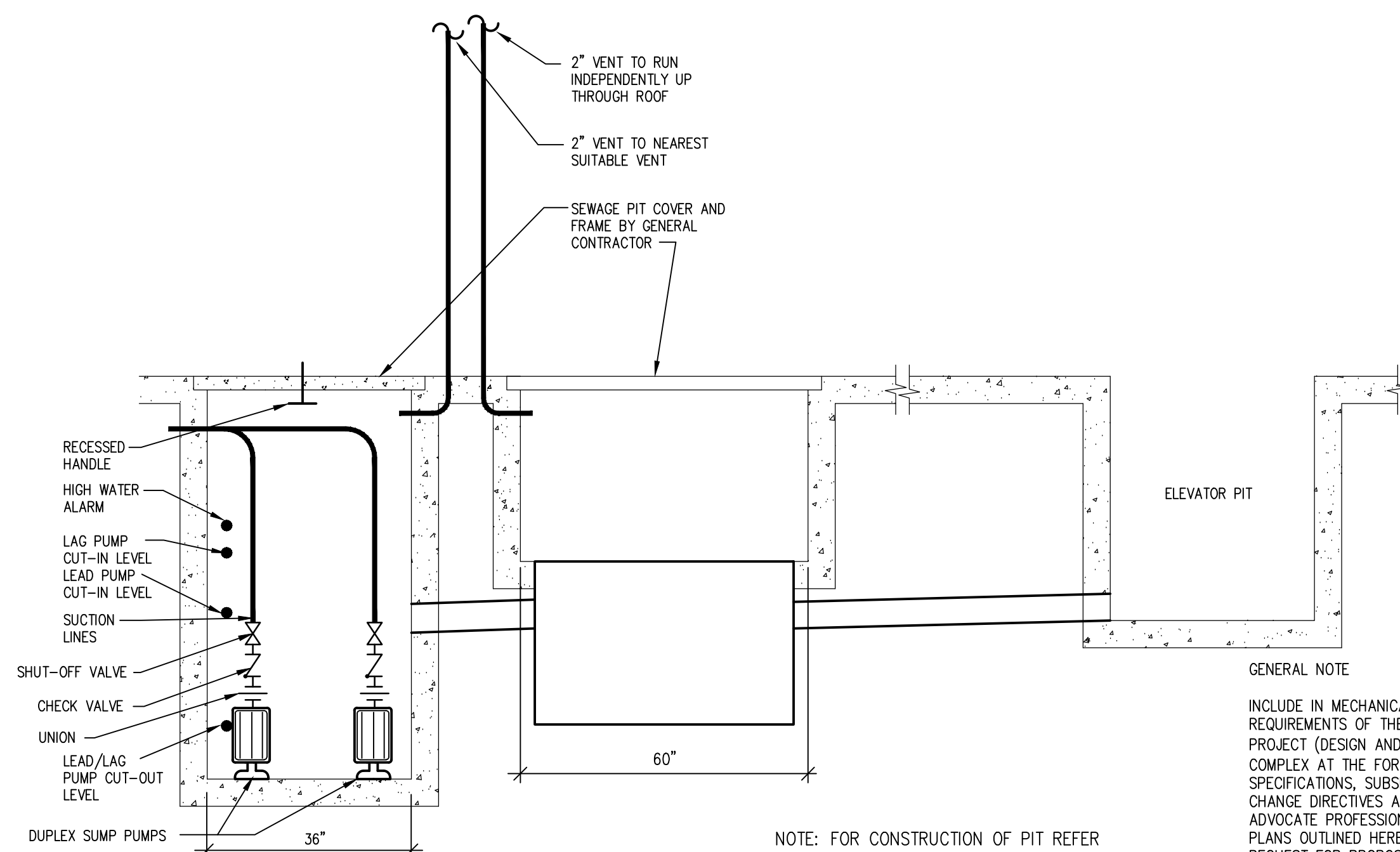
**MEZZANINE FLOOR PLAN (FLEET) - PLUMBING**  
SCALE 1:100



**SINGLE COMPARTMENT OIL INTERCEPTOR**  
N.T.S.



**SINGLE COMPARTMENT GRIT INTERCEPTOR**  
N.T.S.



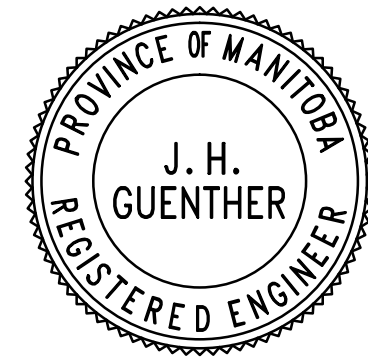
**HYDRAULIC ELEVATOR SUMP AND OIL/GRIT INTERCEPTOR PIT DETAIL**  
N.T.S.

GENERAL NOTE  
INCLUDE IN MECHANICAL WORK AND PRICING SUBMISSION ALL THE MECHANICAL REQUIREMENTS OF THE CITY OF WINNIPEG REQUEST FOR PROPOSAL FOR THIS PROJECT (DESIGN AND CONSTRUCTION OF THE PUBLIC WORKS EAST YARD COMPLEX AT THE FORMER ELMWOOD/NAIRN LANDFILL SITE) INCLUDING ALL SPECIFICATIONS, SUBSEQUENT ADDENDA, CLARIFICATIONS, AND APPROVED CHANGE DIRECTIVES AS INTERPRETED BY THE CITY OF WINNIPEG AND THEIR ADVOCATE PROFESSIONAL ENGINEERS AND CONSULTANTS. THE MECHANICAL PLANS OUTLINED HEREIN ARE PROVIDED AS A GUIDE TO THE INTENT OF THE REQUEST FOR PROPOSAL REQUIREMENTS. IN THE CASE OF A CONFLICT OR OMISSION BETWEEN THE DRAWINGS AND SPECIFICATIONS AND THE INTERPRETED CITY OF WINNIPEG REQUEST FOR PROPOSAL, THE INSTALLATION SHALL BE COMPLETED IN CONFORMANCE WITH THE CITY OF WINNIPEG STATEMENT OF REQUIREMENTS AS INTERPRETED BY THE CITY OF WINNIPEG OR THEIR PROJECT PROFESSIONAL ENGINEERING REPRESENTATIVE.

ISSUED FOR CITY REVIEW 11-06-2012

REV	DESCRIPTION	DATE	BY
3	ISSUED FOR CONSTRUCTION	11 MAY 2012	PSG
2	ISSUED FOR 66% REVIEW	06 MAR 2012	PSG
1	ISSUED FOR 33% REVIEW	06 JAN 2012	PSG

**NOVA 3 ENGINEERING LTD.**  
CONSULTING ENGINEERS  
201-120 FORT STREET  
WINNIPEG, MANITOBA  
R3C 1C7  
TEL: (204) 943-6142  
FAX: (204) 942-1276  
CN: 31-178  
THIS DRAWING IS THE EXCLUSIVE PROPERTY OF NOVA 3 ENGINEERING LTD. AND MAY ONLY BE REPRODUCED WITH THE WRITTEN PERMISSION OF NOVA 3 ENGINEERING LTD.  
THE CONCEPT AND DESIGN INCORPORATED INTO THIS DRAWING ARE BASED ON INFORMATION PROVIDED BY THE CLIENT AND OTHER RELATED SOURCES. PROFESSIONAL ENGINEER ACCEPTS NO RESPONSIBILITY FOR DRAWING AND DESIGN UNLESS DRAWING IS ACCOMPANIED BY ORIGINAL SEALED AND SIGNED LETTER OF INTENT AND CERTIFICATE OF INSPECTION. REFER TO WWW.NOVA3.CA FOR CAUTIONARY NOTES.



3 TERRACON PLACE  
WINNIPEG, CANADA R2J 4B3  
TEL. (204) 233 7881  
FAX (204) 233 4733  
general@ehansch.com  
www.ehansch.com

CLIENT: CITY OF WINNIPEG  
PUBLIC WORKS DEPARTMENT  
PROJECT NUMBER: 1511  
DRAWN BY: BSD  
DATE: MAR 6, 2012  
SCALE: 1: 100

PROJECT TITLE:  
CITY OF WINNIPEG  
PUBLIC WORKS EAST YARD COMPLEX  
MAIN OFFICE & GARAGES  
SHEET TITLE:  
MAIN FLOOR PLAN - PLUMBING

SHEET NUMBER:  
**M1.6**  
REVISION NUMBER:  
0