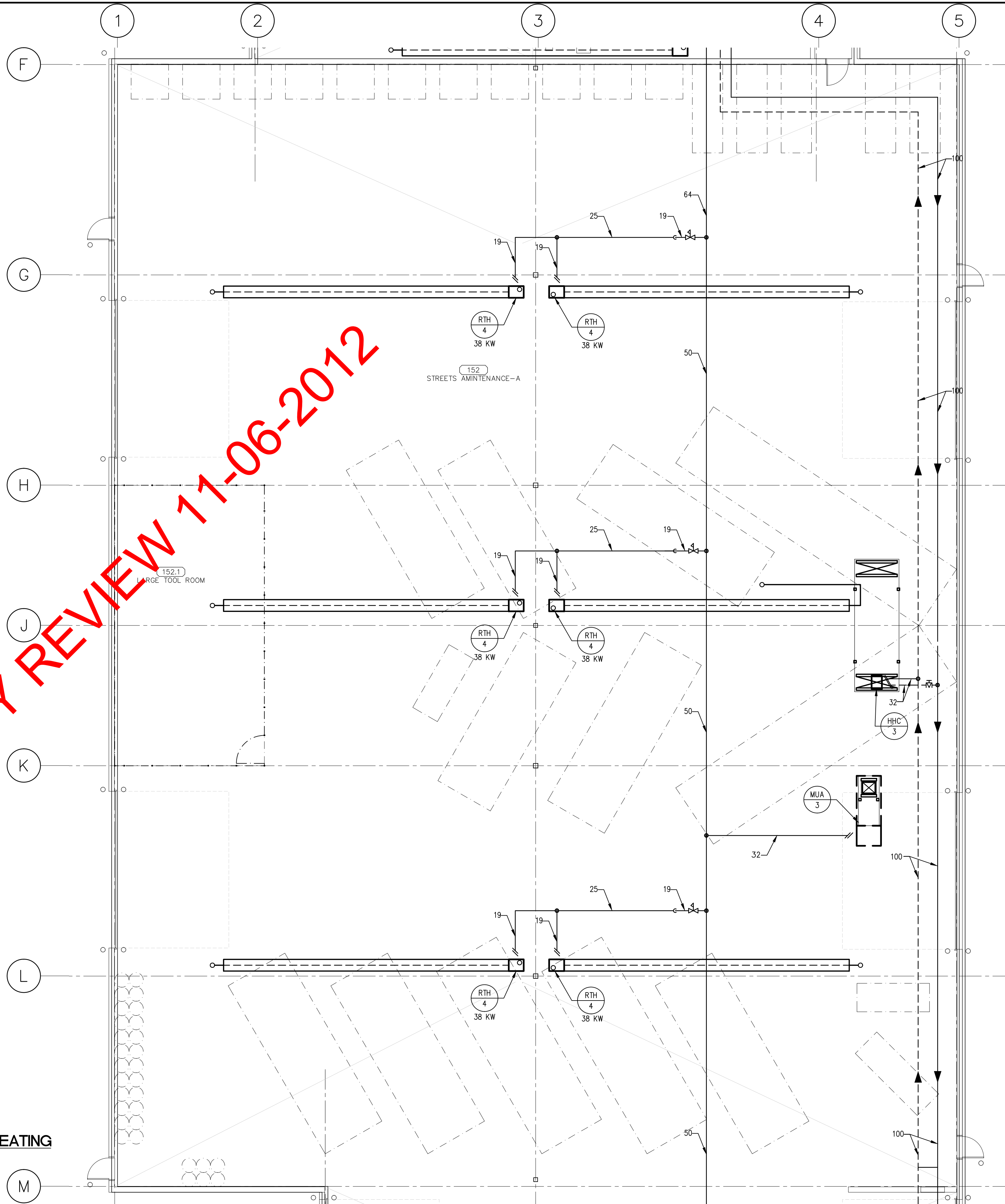


MAIN FLOOR PLAN - HEATING
SCALE 1:100

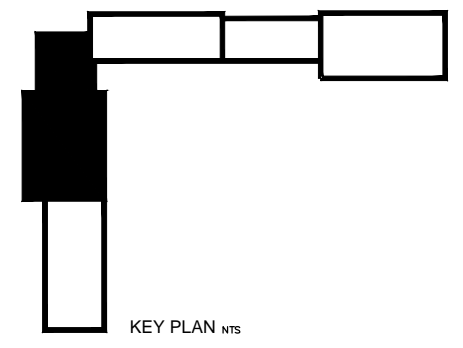


ISSUED FOR CITY REVIEW 11-06-2012

MAIN FLOOR PLAN - HEATING
SCALE 1:100

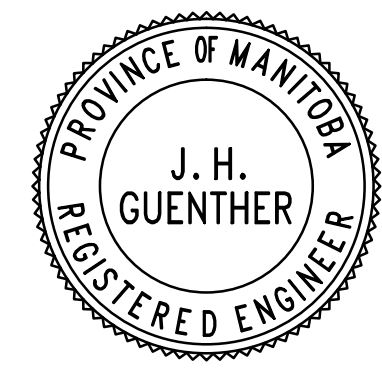
GENERAL NOTE

INCLUDE IN MECHANICAL WORK AND PRICING SUBMISSION ALL RELEVANT THE MECHANICAL REQUIREMENTS OF THE CITY OF WINNIPEG REQUEST FOR PROPOSAL FOR THIS PROJECT (DESIGN AND CONSTRUCTION OF THE PUBLIC WORKS EAST YARD COMPLEX AT THE FORMER ELMWOOD/MARY LANDFILL SITE) INCLUDING ALL SPECIFICATIONS, SUBSEQUENT ADDENDA, CLARIFICATIONS, AND APPROVED CHANGE DIRECTIVES AS INTERPRETED BY THE CITY OF WINNIPEG AND THEIR ADVOCATE PROFESSIONAL ENGINEERS AND CONSULTANTS. THE MECHANICAL PLANS OUTLINED HEREIN ARE PROVIDED AS A GUIDE TO THE INTENT OF THE REQUEST FOR PROPOSAL REQUIREMENTS. IN THE CASE OF A CONFLICT OR OMISSION BETWEEN THE DRAWINGS AND SPECIFICATIONS AND THE INTERPRETED CITY OF WINNIPEG REQUEST FOR PROPOSAL, THE INSTALLATION SHALL BE COMPLETED IN CONFORMANCE WITH THE CITY OF WINNIPEG STATEMENT OF REQUIREMENTS AS INTERPRETED BY THE CITY OF WINNIPEG OR THEIR PROJECT PROFESSIONAL ENGINEERING REPRESENTATIVE.



REV	DESCRIPTION	DATE	BY
3	ISSUED FOR CONSTRUCTION	11 MAY 2012	PSG
2	ISSUED FOR 66% REVIEW	06 MAR 2012	PSG
1	ISSUED FOR 33% REVIEW	06 JAN 2012	PSG

NOVA 3 ENGINEERING LTD.
CONSULTING ENGINEERS
201-120 FORT STREET
WINNIPEG, MANITOBA
R3C 1C7
TEL: (204) 943-6142
FAX: (204) 942-1276
ON: 31-178



ERNST HANSCH
CONSTRUCTION LTD.

3 TERRACON PLACE
WINNIPEG, CANADA R2J 4B3
TEL. (204) 233 7881
FAX (204) 233 4733
general@ehansch.com
www.ehansch.com

CLIENT: **CITY OF WINNIPEG**
PUBLIC WORKS DEPARTMENT
PROJECT NUMBER: 1511
DRAWN BY: BSD
DATE: MAR 6, 2012
SCALE: 1: 100

PROJECT TITLE:
CITY OF WINNIPEG
PUBLIC WORKS EAST YARD COMPLEX
MAIN OFFICE & GARAGES
SHEET TITLE:
MAIN FLOOR PLAN - HEATING

SHEET NUMBER:
M2.4
REVISION NUMBER:
0