

| HYDRONIC HEATING COIL (BASED ON MCQUAY) | | | | | | | | | | |
|---|----------|----------|------------|---------|--------|--------|-----------------|---------------|--------|--------|
| TAG | MODEL | CAPACITY | AIR VOLUME | ESP | EAT | LAT | FLUID FLOW RATE | PRESSURE DROP | EFT | LFT |
| HHC-1 | | | | | | | | | | |
| HHC-2 | 5WB0601C | 31.7 KW | 2562 L/S | 27.4 PA | 12.8°C | 22.9°C | 0.64 L/S | 2.4 KPA | 82.2°C | 70.3°C |
| HHC-3 | 5WB0601C | 41.8 KW | 3408 L/S | 27.4 PA | 12.8°C | 22.8°C | 0.85 L/S | 3.3 KPA | 82.2°C | 70.4°C |
| HHC-4 | 5WB0701C | 17.1 KW | 1269 L/S | 27.4 PA | 12.8°C | 23.7°C | 0.36 L/S | 0.9 KPA | 82.2°C | 70.9°C |
| HHC-5A | 5WB0601C | 18.9 KW | 1692 L/S | 27.4 PA | 12.8°C | 21.9°C | 0.36 L/S | 0.9 PA | 82.2°C | 69.7°C |
| HHC-8 | 5WB0801C | 15.9 KW | 1128 L/S | 29.9 PA | 12.8°C | 24.3°C | 0.32 L/S | 0.9 PA | 82.2°C | 70.4°C |
| HHC-9 | 5MQ0601C | 96 KW | 5311 L/S | 29.9 PA | 12.8°C | 27.5°C | 0.19 L/S | 9.6 KPA | 82.2°C | 66.9°C |
| HHC-10 | 5WB0701C | 4.4 KW | 611 L/S | 34.8 PA | 21.1°C | 26.9°C | .063 L/S | 299 PA | 82.2°C | 65.1°C |

| DUST COLLECTOR (BASED ON CAMFIL FARR) | | | | | | | |
|---------------------------------------|--------|----------|-------|-------------|-----------|--------|---------------------------------|
| TAG | MODEL | FLOW | ESP | MOTOR POWER | DRUM SIZE | WEIGHT | COMMENTS |
| DC-1 | G58 | 1927 L/S | 4 KPA | 11.2 KW | 208 L | | DRY FIRE SUPPRESSION SYSTEM |
| DC-2 | FARVAC | 80 L/S | - | - | 61 L | | ON CASTERS, 3 SPUN BOND FILTERS |

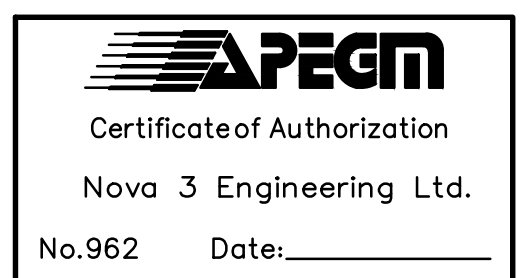
| CEILING FANS (BASED ON CANARM) | | | | | | |
|--------------------------------|-----------|--------------|------------|----------------|---------|---------------------|
| TAG | MODEL | AIR VELOCITY | AIR VOLUME | DOWNROD LENGTH | WEIGHT | COMMENT |
| CF-1 | CP60 HPWP | 3.3 M/S | 21620 L/S | 406 MM | 11.4 KG | C/W MC-3 CONTROLLER |
| CF-2A/B | CP60 HPWP | 3.3 M/S | 21620 L/S | 406 MM | 11.4 KG | C/W MC-5 CONTROLLER |

ISSUED FOR CITY REVIEW 11-06-2012

| REV | DESCRIPTION | DATE | BY |
|-----|-------------------------|-------------|-----|
| 3 | ISSUED FOR CONSTRUCTION | 11 MAY 2012 | PSG |
| 2 | ISSUED FOR 66% REVIEW | 06 MAR 2012 | PSG |
| 1 | ISSUED FOR 33% REVIEW | 06 JAN 2012 | PSG |

NOVA 3 ENGINEERING LTD.
CONSULTING ENGINEERS
201-120 FORT STREET
WINNIPEG, MANITOBA
R3C 1C7
TEL: (204) 943-6142
FAX: (204) 942-1276
ON: 31-178

THIS DRAWING IS THE EXCLUSIVE PROPERTY OF NOVA 3 ENGINEERING LTD. AND MAY ONLY BE REPRODUCED WITH THE WRITTEN PERMISSION OF NOVA 3 ENGINEERING LTD.
THE CONCEPT AND DESIGN INCORPORATED INTO THIS DRAWING ARE BASED ON INFORMATION PROVIDED BY THE CLIENT AND OTHER RELATED SOURCES. PROFESSIONAL ENGINEER ACCEPTS NO RESPONSIBILITY FOR DRAWING AND DESIGN UNLESS DRAWING IS ACCOMPANIED BY ORIGINAL SEALED AND SIGNED LETTER OF INTENT AND CERTIFICATE OF INSPECTION. REFER TO WWW.NOVA3.CA FOR CAUTIONARY NOTES.



ERNST HANSCH
CONSTRUCTION LTD.

3 TERRACON PLACE
WINNIPEG, CANADA R2J 4B3
TEL. (204) 233 7881
FAX (204) 233 4733
general@ehansch.com
www.ehansch.com

CLIENT: CITY OF WINNIPEG
PUBLIC WORKS DEPARTMENT
PROJECT NUMBER: 1511
DRAWN BY: BSD
DATE: MAR 6, 2012
SCALE: 1: 100

PROJECT TITLE:
CITY OF WINNIPEG
PUBLIC WORKS EAST YARD COMPLEX
MAIN OFFICE & GARAGES
SHEET TITLE:
MECHANICAL EQUIPMENT SCHEDULE

SHEET NUMBER:
M5.2
REVISION NUMBER:
0