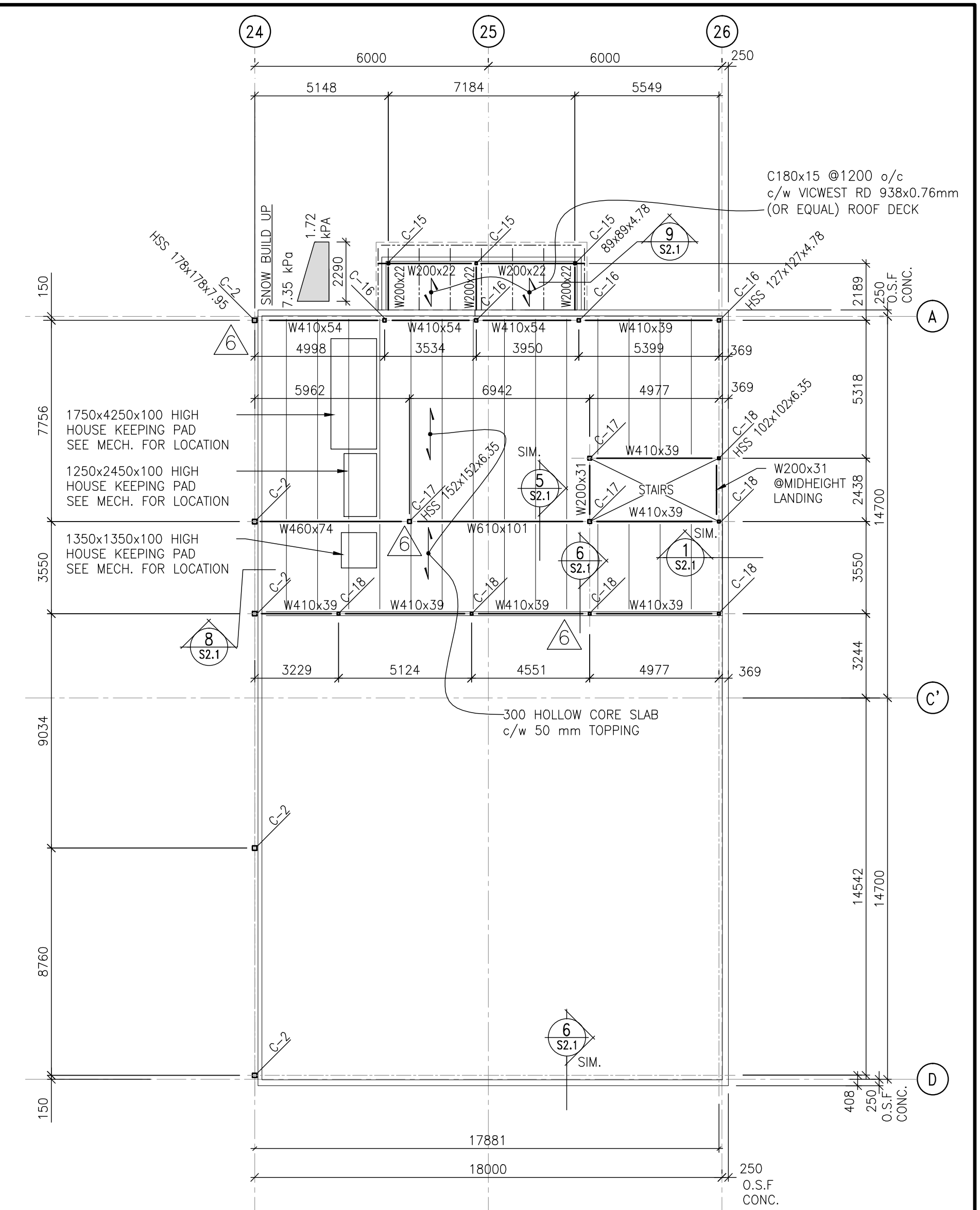


SECOND FLOOR PLAN
SCALE: 1:150



SECOND FLOOR PLAN
SCALE: 1:150



MARK	SIZE	BASE PLATE	COMMENTS
C-1	HSS 204x204x9.53	305x355x25 mm BASE PLATE 4-25mm Ø ANCHOR BOLTS	PROVIDE 150x150x12 x150 LONG ANGLE TIES TO ADJACENT PRECAST WALLS WHERE COLUMNS ARE ADJACENT TO PRECAST
C-2	HSS 178x178x7.95	250x350x25 mm BASE PLATE 4-20mm Ø ANCHOR BOLTS	
C-3	HSS 152x152x6.35	305x355x25 mm BASE PLATE 4-20mm Ø ANCHOR BOLTS	
C-4	HSS 152x152x9.5	305x355x25 mm BASE PLATE 4-20mm Ø ANCHOR BOLTS	
C-5	HSS 152x152x7.95	175x305x7.95 mm BASE PLATE 4-20mm Ø ANCHOR BOLTS	
C-6	W150x30	150x150x20 mm BASE PLATE 2-20mm Ø ANCHOR BOLTS	
C-7	W310x79	310x250x25 mm BASE PLATE 4-25mm Ø ANCHOR BOLTS	
C-8	W310x107	310x310x25 mm BASE PLATE 4-25mm Ø ANCHOR BOLTS	
C-9	HSS 127x127x6.35	150x250x12 mm BASE PLATE 2-20mm Ø ANCHOR BOLTS	
C-10	HSS 102x102x6.35	102x225x12 mm BASE PLATE 2-20mm Ø ANCHOR BOLTS	
C-11	HSS 102x102x4.78	102x225x12 mm BASE PLATE 2-20mm Ø ANCHOR BOLTS	
C-12	HSS 102x102x6.35	102x250x12 mm BASE PLATE 2-20mm Ø ANCHOR BOLTS	
C-13	HSS 178x178x6.35	350x350x25 mm BASE PLATE 4-25mm Ø ANCHOR BOLTS	
C-14	HSS 152x152x6.35	300x300x20 mm BASE PLATE 4-25mm Ø ANCHOR BOLTS	
C-15	HSS 89x89x4.78	100x250x20 mm BASE PLATE 2-20mm Ø ANCHOR BOLTS	
C-16	HSS 127x127x4.78	150x300x20 mm BASE PLATE 2-20mm Ø ANCHOR BOLTS	
C-17	HSS 152x152x6.35	200x350x20 mm BASE PLATE 4-20mm Ø ANCHOR BOLTS	
C-18	HSS 102x102x6.35	125x250x20 mm BASE PLATE 2-20mm Ø ANCHOR BOLTS	

ISSUED FOR CITY REVIEW 28-05-2012

REV	DESCRIPTION	DATE	BY
6	COLUMN REVISIONS	5 APR. 2012	CM
5	ISSUED FOR CONSTRUCTION	4 APR. 2012	CM
4	REISSUED FOR PERMIT	15 MAR. 2012	CM
3	66% DESIGN DWGS.	5 MAR. 2012	CM
2	ISSUED FOR FOUNDATION PERMIT	20 JAN. 2012	CM
1	33% DESIGN DWGS.	6 JAN. 2012	CM

Frovich & Associates

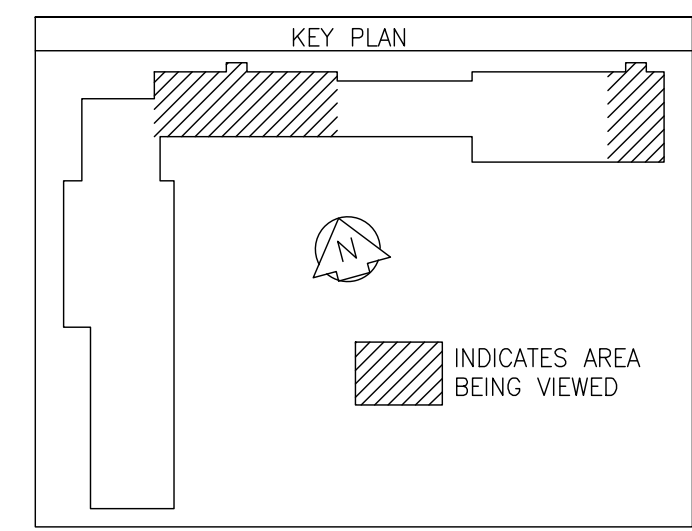
120 St. Annes Road
Winnipeg, MB
R2M 2Z2
(204) 254-0666



3 TERRACON PLACE
WINNIPEG, CANADA R2J 4B3
TEL. (204) 233 7881
FAX (204) 233 4733
general@ehansch.com
www.ehansch.com

CLIENT: CITY OF WINNIPEG
PUBLIC WORKS DEPARTMENT
PROJECT NUMBER: 1511
DRAWN BY: CM
DATE: MAR. 12, 2012
SCALE: AS NOTED

PROJECT TITLE:
**CITY OF WINNIPEG
PUBLIC WORKS EAST YARD COMPLEX
MAIN OFFICE & GARAGES**
SHEET TITLE:
2ND FLOOR PLAN



SHEET NUMBER:

S2.0

REVISION NUMBER:

6