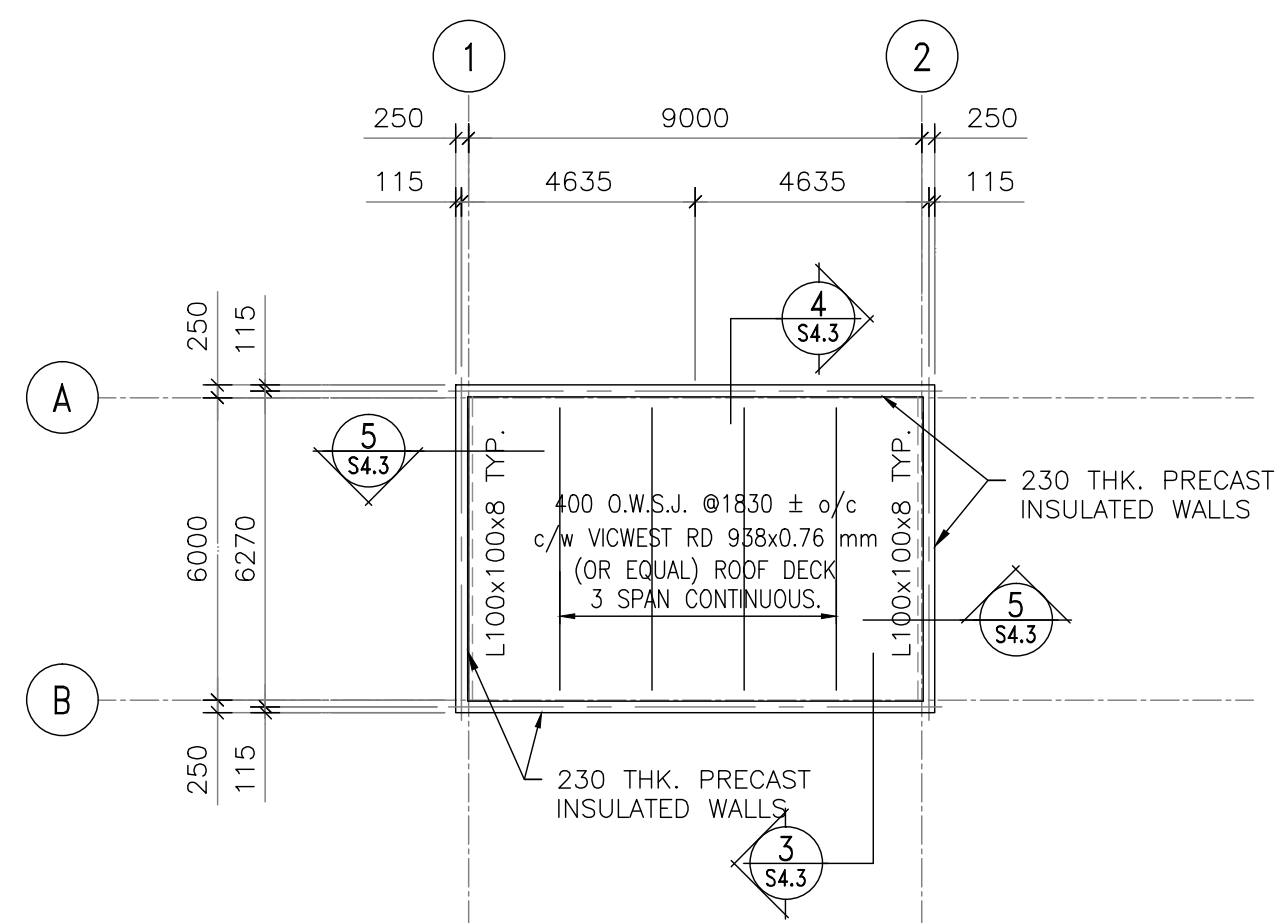
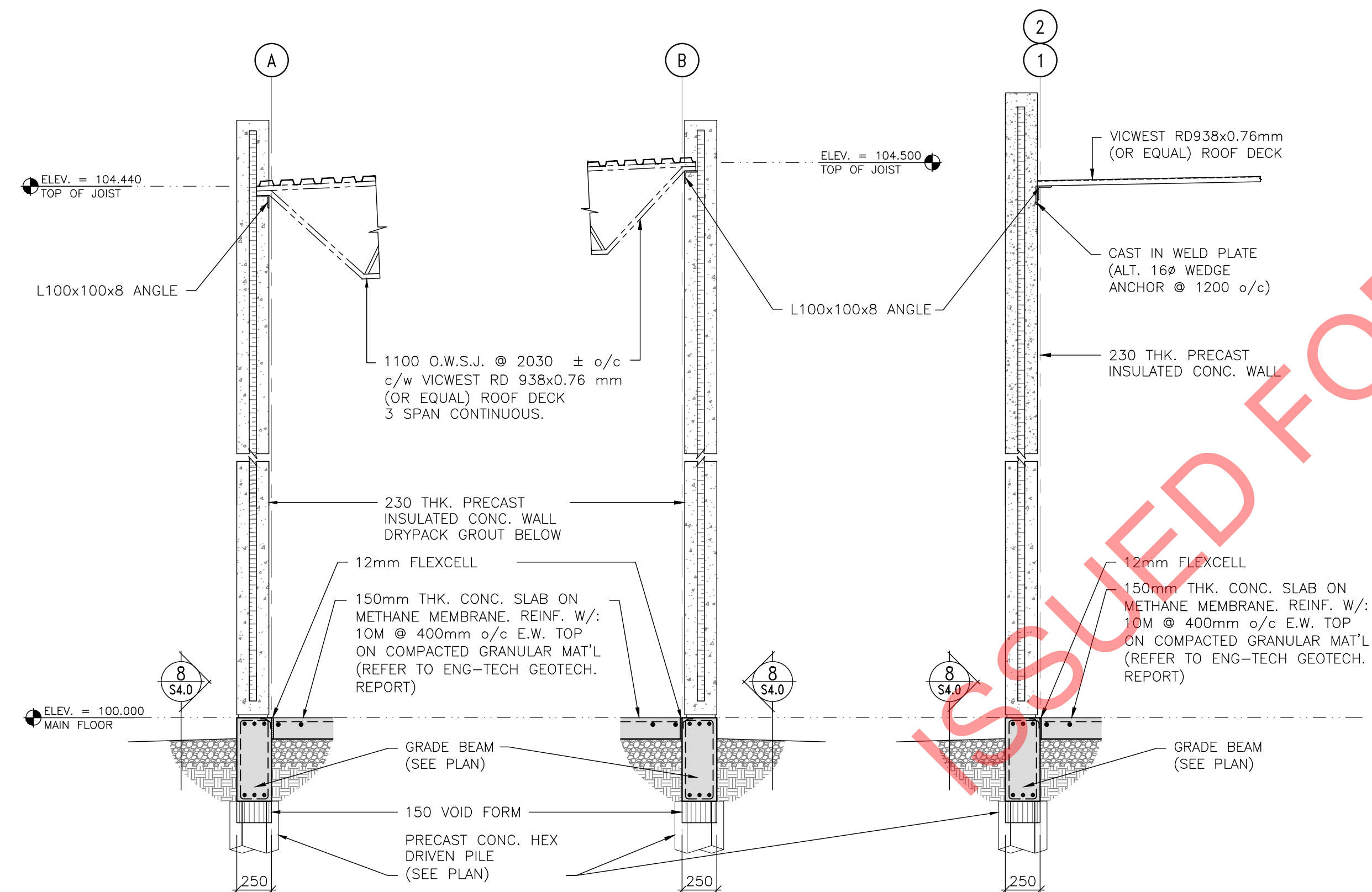


**1 FOUNDATION PLAN (BO-05)**  
 S4.3 scale: 1:150  
 NOTE: GRADE BEAM DEPTH



**2 ROOF FRAMING PLAN (BO-05)**  
 S4.3 scale: 1:150  
 NOTE: GRADE BEAM DEPTH



**3 SECTIONS** SCALE 1:30  
**4 SECTIONS** SCALE 1:30  
**5 SECTION** SCALE 1:30

PILE SCHEDULE	
MARK	DESCRIPTION
A	300 Ø HEX PRECAST CONC. DRIVEN PILE
B	350 Ø HEX PRECAST CONC. DRIVEN PILE
C	400 Ø HEX PRECAST CONC. DRIVEN PILE

GRADE BEAM SCHEDULE			
TOP OF ALL GRADE BEAMS ELEVATION = 100.00 (U.N.O) GEODETIC ELEVATION = 234.00			
MARK	WIDTH	DEPTH	REINFORCING
GB-1	250	685	2-25M & 1-20M T&B CONT. 10M STIRRUPS @600 o/c
GB-2	250	685	2-25M T&B CONT. 10M STIRRUPS @600 o/c
GB-3	250	685	2-25M T&B CONT. 15M STIRRUPS @300 o/c 1000mm E.S. GRIDLINE
GB-4	250	685	2-25M T&B CONT. 10M STIRRUPS @600 o/c 10M STIRRUPS @300 o/c IN PAIRS AT LINES 1&5 BETWEEN G&H, L&K (SEE 1/S1.2)
GB-5	250	685	3-25M T&B CONT. 15M STIRRUPS @300 o/c
GB-6	250	685	2-25M & 1-20M T&B CONT. 15M STIRRUPS @300 o/c
GB-7	250	685	2-25M & 1-20M T&B CONT. 15M STIRRUPS @300 o/c
GB-8	350	685	3-20M T&B CONT. 10M STIRRUPS @600 o/c
GB-9	250	685	3-25M T&B CONT. 15M STIRRUPS @600 o/c
GB-10	250	685	2-25M & 1-15M T&B CONT. 15M STIRRUPS @ 600 o/c
GB-11	250	900	3-25M T&B CONT. 15M STIRRUPS @ 600 o/c
GB-12	200	685	2-25M T&B CONT. 10M STIRRUPS @600 o/c

COLUMN SCHEDULE				
MARK	SIZE	BASE PLATE	COMMENTS	
C-1	HSS 204x204x9.53	305x355x25 mm BASE PL 4-25mm Ø ANCHOR BOLTS	PROVIDE 150x150x12 x150 LONG ANGLE TIES TO ADJACENT PRECAST WALLS WHERE COLUMNS ARE ADJACENT TO PRECAST	
C-2	HSS 178x178x7.95	250x350x25 mm BASE PL 4-20mm Ø ANCHOR BOLTS		
C-3	HSS 152x152x6.35	305x355x25 mm BASE PL 4-20mm Ø ANCHOR BOLTS		
C-4	HSS 152x152x9.5	305x355x25 mm BASE PL 4-20mm Ø ANCHOR BOLTS		
C-5	HSS 152x152x7.95	175x305x7.95 mm BASE PL 4-20mm Ø ANCHOR BOLTS		
C-6	W150x30	150x150x20 mm BASE PL 2-20mm Ø ANCHOR BOLTS		
C-7	W310x79	310x250x25 mm BASE PL 4-25mm Ø ANCHOR BOLTS		
C-8	W310x107	310x310x25 mm BASE PL 4-25mm Ø ANCHOR BOLTS		
C-9	HSS 127x127x6.35	150x250x12 mm BASE PL 2-20mm Ø ANCHOR BOLTS		
C-10	HSS 102x102x6.35	102x225x12 mm BASE PL 2-20mm Ø ANCHOR BOLTS		
C-11	HSS 102x102x4.78	102x225x12 mm BASE PL 2-20mm Ø ANCHOR BOLTS		
C-12	HSS 102x102x6.35	102x250x12 mm BASE PL 2-20mm Ø ANCHOR BOLTS		
C-13	HSS 178x178x6.35	350x350x25 mm BASE PL 4-25mm Ø ANCHOR BOLTS		
C-14	HSS 152x152x6.35	300x300x20 mm BASE PL 4-25mm Ø ANCHOR BOLTS		
C-15	HSS 89x89x4.78	100x250x20 mm BASE PL 2-20mm Ø ANCHOR BOLTS		
C-16	HSS 127x127x4.78	150x300x20 mm BASE PL 2-20mm Ø ANCHOR BOLTS		
C-17	HSS 152x152x6.35	200x350x20 mm BASE PL 4-20mm Ø ANCHOR BOLTS		
C-18	HSS 102x102x6.35	125x250x20 mm BASE PL 2-20mm Ø ANCHOR BOLTS		



REV	DESCRIPTION	DATE	BY
5	ISSUED FOR CONSTRUCTION	4 APR. 2012	CM
4	REISSUED FOR PERMIT	15 MAR. 2012	CM
3	66% DESIGN DWGS.	5 MAR. 2012	CM
2	ISSUED FOR FOUNDATION PERMIT	20 JAN. 2012	CM
1	33% DESIGN DWGS.	6 JAN. 2012	CM

**Frovich & Associates**  
 120 St. Annes Road  
 Winnipeg, MB  
 R2M 2Z2  
 (204) 254-0666



3 TERRACON PLACE  
 WINNIPEG, CANADA R2J 4B3  
 TEL. (204) 233 7881  
 FAX (204) 233 4733  
 general@ehansch.com  
 www.ehansch.com

CLIENT: CITY OF WINNIPEG  
 PUBLIC WORKS DEPARTMENT  
 PROJECT NUMBER: 1511  
 DRAWN BY: CM  
 DATE: MAR. 12, 2012  
 SCALE: AS NOTED

PROJECT TITLE:  
**CITY OF WINNIPEG  
 PUBLIC WORKS EAST YARD COMPLEX  
 MAIN OFFICE & GARAGES**  
 SHEET TITLE:  
**AUXILLARY BUILDINGS BO-05  
 FLOOR PLAN, ROOF PLAN & SECTIONS**

SHEET NUMBER:  
**S4.3**  
 REVISION NUMBER:  
 5