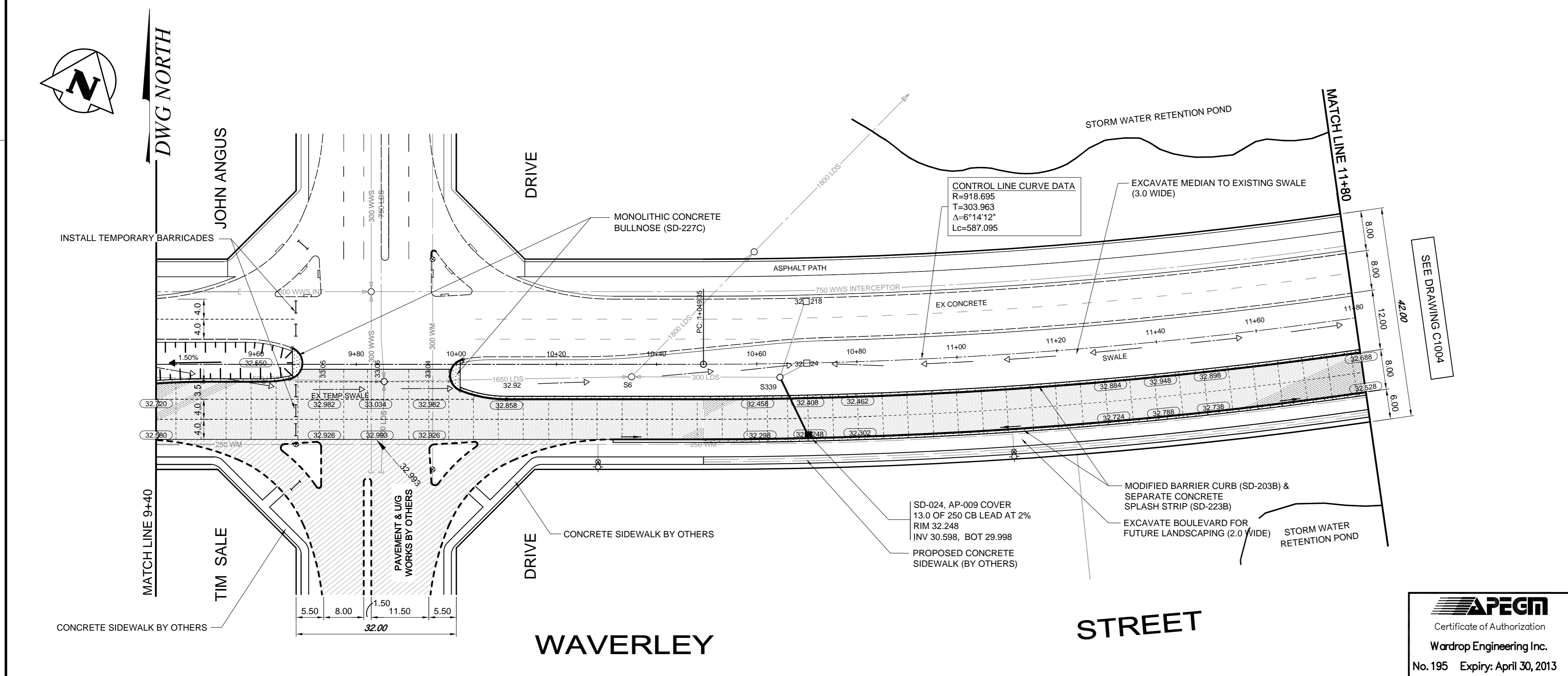


**WAVERLEY STREET CROSS SECTION**  
(STA 10+31.3 TO STA 14+95.6)



**CONSTRUCTION NOTES**

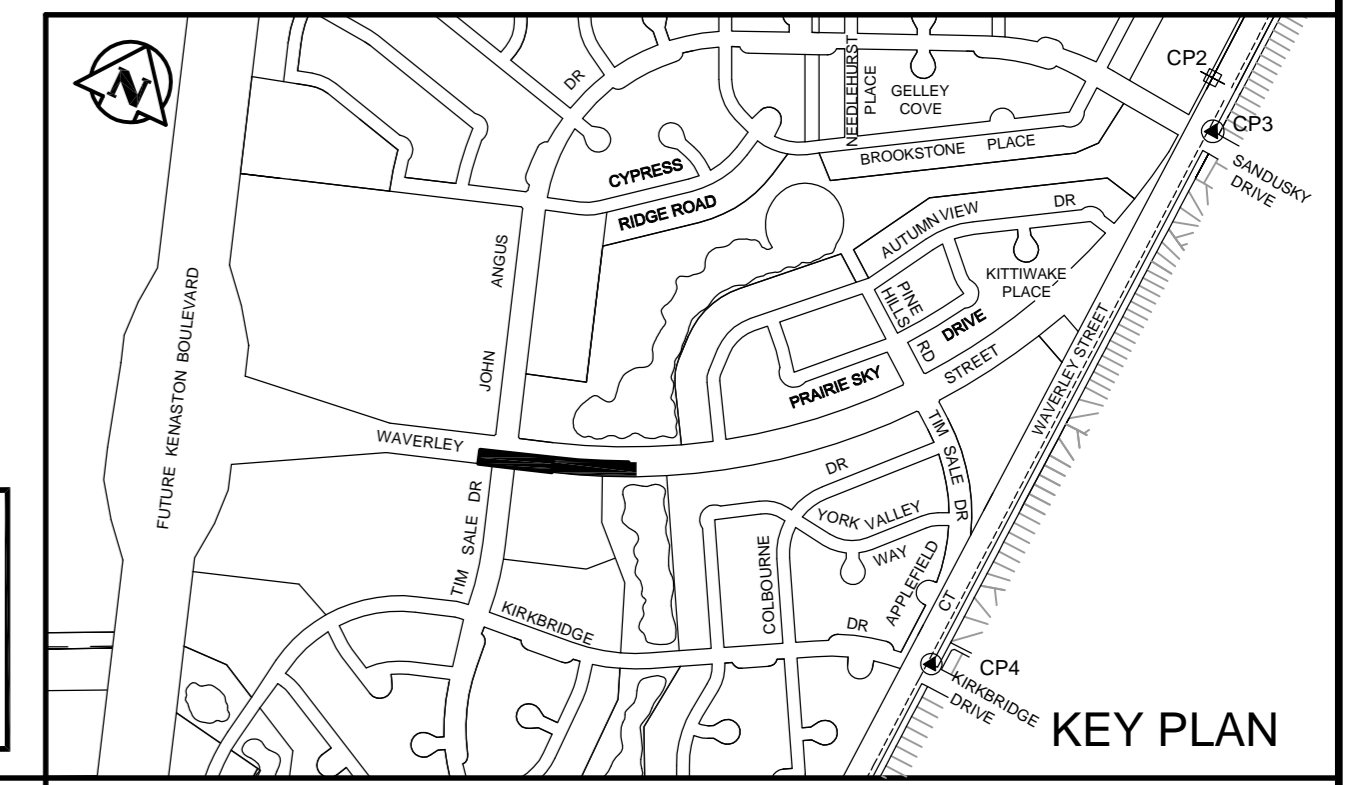
1. ALL PAVEMENT DIMENSIONS ARE TO BACK OF CURB.
2. ALL BACKFILL UNDER BOULEVARD TO BE CLASS 4 UNLESS OTHERWISE NOTED.
3. ALL PIPE UNDER EXISTING AND FUTURE PAVEMENT TO BE INSTALLED USING TRENCHLESS METHODS, WHERE NOT POSSIBLE, OPEN CUT WITH CLASS 2 BACKFILL.
4. ALL CURB RAMP IN ACCORDANCE WITH SD-228A STANDARD LAYOUT, C & E.
5. SUBDRAINS AT LOW POINTS (5.0m EACH WAY AS PER SD-245).

**GENERAL NOTES**

1. CHAINAGE IS ALONG CENTRE LINE OF WAVERLEY STREET R.O.W.
2. SEE DRAWING C1009 FOR WAVERLEY STREET GEOMETRICS.
3. SEE DRAWING C1006 TO C1008 FOR WAVERLEY STREET UNDERGROUND.

**Coordinate Control Survey Monuments**

No.	Description	Northing	Easting	Elevation
CP 1	IB CP1	3000.000	10000.000	232.535
CP 2	IB CP3	2741.671	10000.000	232.363
CP 3	GBM82024	2675.060	10035.366	232.259
CP 4	GBM82025	1827.090	10031.834	232.917



**APGM**  
Certificate of Authorization  
**Wardrop Engineering Inc.**  
No. 195 Expiry: April 30, 2013

150 WM	WATERMAIN	150 WM	→	SWALE	→	RIGHT-OF-WAY	
400 FM	FEEDERMAIN	400 FM	○	MANHOLE	●	GAS	
300 LDS	LAND DRAINAGE SEWER	300 LDS	□	CATCHBASIN	■	HYDRO	
250 WWS	WASTEWATER SEWER	250 WWS	□	HYDRO BOX	■	MTS	
300 CS	COMBINED SEWER	300 CS	●	HYDRO POLE	○	SPRINKLER	
200 FCM	FORCEMAIN	200 FCM	●	LIGHT STANDARD	⊙	ELEVATION	(32.000)
	JUNCTIONS		←	ANCHOR	⊕	SIDEWALK	
	HYDRANT		⊕	TREE	⊕	CURB	
	VALVE		⊕	SURVEY BAR	⊕	ASPHALT	
	CURB STOP		⊕	BARRICADE	⊕	CONCRETE	
EXISTING	LEGEND-PLAN	PROPOSED	EXISTING	LEGEND-PLAN	PROPOSED	EXISTING	

**LOCATION APPROVED UNDERGROUND STRUCTURES**

SUPV. U/G STRUCTURES COMMITTEE DATE

NOTE: LOCATION OF UNDERGROUND STRUCTURES AS SHOWN ARE BASED ON THE BEST INFORMATION AVAILABLE. BUT NO GUARANTEE IS GIVEN THAT ALL EXISTING UTILITIES ARE SHOWN OR THAT THE GIVEN LOCATIONS ARE EXACT. CONFIRMATION OF EXISTENCE AND EXACT LOCATION OF ALL SERVICES MUST BE OBTAINED FROM THE INDIVIDUAL UTILITIES BEFORE PROCEEDING WITH CONSTRUCTION.

B.M. ELEV.			
00	ISSUED FOR TENDER	12.06.11	TF
NO.	REVISIONS	DATE	BY

**TETRA TECH**

DESIGNED BY TF CHECKED BY

DRAWN BY GMD APPROVED BY

HOR. SCALE: 1 : 500 RELEASED FOR CONSTRUCTION

VERTICAL: 1 : 20 DATE 12.04.12

**PRELIMINARY DRAWING**

**NOT TO BE USED FOR CONSTRUCTION**

CONSULTANT DRAWING NO. 1200070300-DWG-C1003-00

**THE CITY OF WINNIPEG**  
PUBLIC WORKS DEPARTMENT  
ENGINEERING DIVISION

WAVERLEY STREET EXTENSION  
KENASTON BOULEVARD (FUTURE) TO TIM SALE DRIVE

WAVERLEY STREET (EASTBOUND LANES)  
28m WEST OF TIM SALE DRIVE TO  
101m WEST OF AUTUMNVIEW DRIVE

CITY DRAWING NUMBER SHEET 3 OF 11  
**C1003**