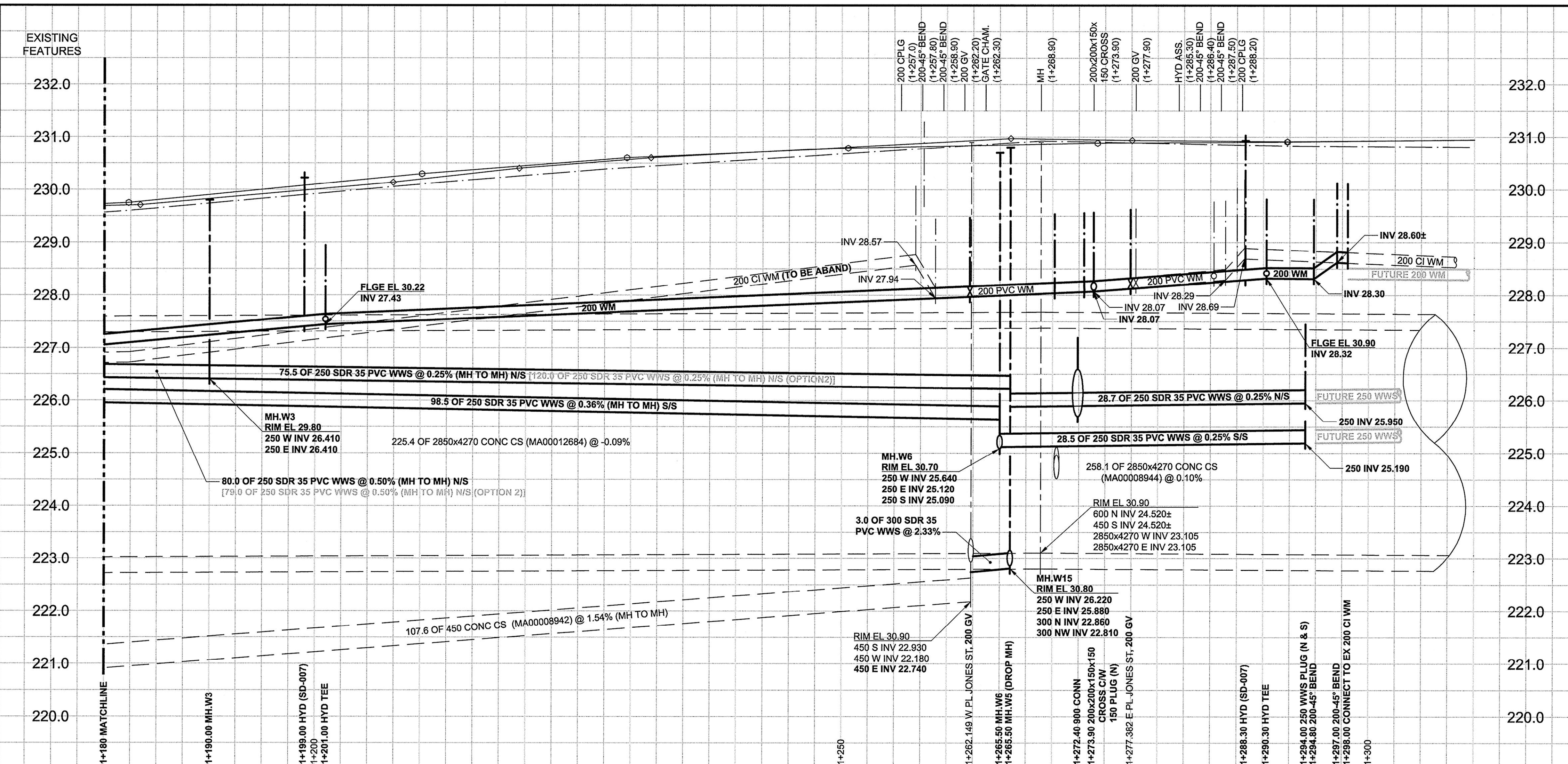


D SIZE 22" x 34" (559mm x 864mm)

PLOT: 6/4/2012 12:42:24 PM

AECOM REVIEW DRAFT CHK

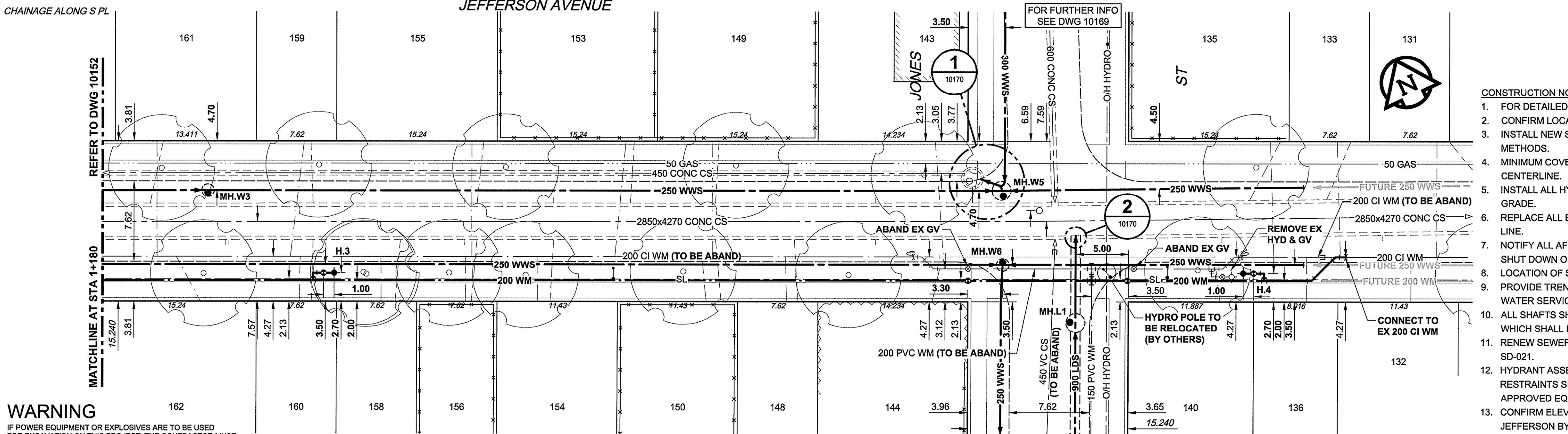


WATER SERVICE INFORMATION

ADDRESS	DISTANCE PROPERTY	SIZE(mm) & TYPE	SHORT & LONG MEASUREMENT	CORPORATION LOCATION	REMARKS
131 JEFFERSON	0.15	16 LEAD	0.91m WEL OF HOUSE	OPP S/C	
132 JEFFERSON	0.30	12 COPPER	3.0m WEL OF HOUSE	OPP S/C	
133 JEFFERSON	0.15	16 LEAD	2.1m WEL OF HOUSE	0.30m E OF SC	
135 JEFFERSON	0.30	20 COPPER	0.95m WEHL	0.34m E OF SC	
136 JEFFERSON	0.15	16 LEAD	1.8m WEL OF HOUSE	OPP S/C	
140 JEFFERSON	PROPERTY	20 COPPER	2.10m WEHL	0.4m W OF SC	
143 JEFFERSON	20	3.3m WEHL	3.1m WWL JONES	0.85m E OF SC	
144 JEFFERSON	0.50	20 COPPER	3.4m WWL JONES	0.7m E OF SC	
148 JEFFERSON	0.15	16 LEAD	2.4m WEL OF HOUSE	OPP S/C	
149 JEFFERSON	0.60	16 LEAD	17.2m WWL OF JONES	OPP S/C	
150 JEFFERSON	0.30	16 LEAD	3.5m WEL OF HOUSE	OPP S/C	
153 JEFFERSON	PROPERTY	20 COPPER	2.4m WEL OF HOUSE	0.1m W OF S/C	
154 JEFFERSON	0.15	16 LEAD	24.2m WWL OF JONES	OPP S/C	
155 JEFFERSON	0.30	16 LEAD	40.8m WWL OF JONES	OPP S/C	
156 JEFFERSON	0.60	20 COPPER	47.7m WWL OF JONES ST	OPP S/C	
158 JEFFERSON	0.30	16 LEAD	2.6m WEL OF HOUSE	OPP S/C	
159 JEFFERSON	0.50	20 COPPER	47.5m E 1ST HYD E MAIN	1.2m W OF S/C	
160 JEFFERSON	0.15	20 COPPER	2.7m WEL HOUSE	OPP S/C	
161 JEFFERSON	0.15	16 LEAD	39.7m E 1ST HYD E MAIN	OPP S/C	
162 JEFFERSON	8.5 BLDG	20 LEAD	7.7m E/WBL / 9.9m EWLL	1.5m W OF S/C	

SEWER SERVICE INFORMATION

ADDRESS	PL TIE (SHORT/LONG)	JUNCTION TIE	REMARKS
131 JEFFERSON		215.8m W OF MH AT SCOTIA	
132 JEFFERSON			NO INFO
133 JEFFERSON		228.3m W OF MH AT SCOTIA	
135 JEFFERSON		235.6m W OF MH AT SCOTIA	
136 JEFFERSON			NO INFO
138 JEFFERSON			NO INFO
140 JEFFERSON			NO INFO
143 JEFFERSON		1.6m W OF E LINE	
144 JEFFERSON			NO INFO
148 JEFFERSON		22.5m W OF MH AT NORMAN	
149 JEFFERSON		30.1m W OF MH AT NORMAN	
150 JEFFERSON		30.1m W OF MH AT NORMAN	
153 JEFFERSON		37.7m W OF MH AT NORMAN	
154 JEFFERSON		45.4m W OF MH AT NORMAN	
155 JEFFERSON		52.7m W OF MH AT NORMAN	
156 JEFFERSON			NO INFO
158 JEFFERSON		60.6m W OF MH AT NORMAN	
159 JEFFERSON		68.2m W OF MH AT NORMAN	
160 JEFFERSON			NO INFO
161 JEFFERSON		83.5m W OF MH AT NORMAN	
162 JEFFERSON		83.5m W OF MH AT NORMAN	



CONSTRUCTION NOTES:

- FOR DETAILED TEST HOLE INFORMATION, SEE SPECIFICATION.
- CONFIRM LOCATION OF ALL WATER & WASTEWATER SERVICES IN THE FIELD.
- INSTALL NEW SEWERS, CATCHBASIN LEADS AND WATERMANS BY TRENCHLESS METHODS.
- MINIMUM COVER TO TOP OF PROPOSED WATERMAIN SHALL BE 2.5m FROM STREET CENTERLINE.
- INSTALL ALL HYDRANTS WITH FLANGE ELEVATION 50mm TO 150mm ABOVE FINISHED GRADE.
- REPLACE ALL EXISTING LEAD SERVICES FROM PROPOSED WATERMAIN TO PROPERTY LINE.
- NOTIFY ALL AFFECTED RESIDENTS AND BUSINESSES 24 HOURS IN ADVANCE OF ANY SHUT DOWN OR DISRUPTION OF SERVICE.
- LOCATION OF SERVICES SHOWN ON DRAWINGS ARE APPROXIMATE.
- PROVIDE TRENCH INSULATION WHERE 2.5m OF COVER CANNOT BE PROVIDED FOR WATER SERVICES.
- ALL SHAFTS SHALL HAVE CLASS 3 BACKFILL EXCEPTING THOSE ON MAIN STREET WHICH SHALL HAVE CLASS 1 BACKFILL.
- RENEW SEWER SERVICES TO PROPERTY LINE AND PLUG EXISTING SERVICE AS PER SD-021.
- HYDRANT ASSEMBLIES SHALL BE FULLY MECHANICALLY RESTRAINED. MECHANICAL RESTRAINTS SHALL BE COATED WITH PETROLATUM MASTIC AND TAPE (DENSO OR APPROVED EQUAL).
- CONFIRM ELEVATION OF SEWER SERVICES FOR 1168 MAIN, 189 JEFFERSON AND 187 JEFFERSON BY SOFT DIGGING PRIOR TO INSTALLING 250 WWS ON JEFFERSON.
- TEMPORARY OVERHEAD STREET LIGHTING AND PERMANENT STREET LIGHTING RESTORATIONS BY OTHERS.

WARNING
 IF POWER EQUIPMENT OR EXPLOSIVES ARE TO BE USED FOR EXCAVATION ON THIS PROJECT, THE CONTRACTOR MUST:
 1) NOTIFY THE GAS COMPANY OF THE PROPOSED LOCATION OF EXCAVATION.
 2) TAKE PRECAUTION TO AVOID DAMAGE TO GAS COMPANY INSTALLATIONS.
 SEE PROVINCIAL REGULATION 140/92 FOR DETAILS

150 WM	WATERMAIN	150 WM	CURB STOP	150 WM	WATERMAIN	150 WM	LOCATION APPROVED
+	HYDRANT	+	REDUCER	+	HYDRANT	+	UNDERGROUND STRUCTURES
○	VALVE	○	COUPLING	○	VALVE	○	
300 LDS	LAND DRAINAGE SEWER	300 LDS	ANODE	300 LDS	LAND DRAINAGE SEWER	300 LDS	SUPR. U/G STRUCTURES COMMITTEE DATE
250 WWS	WASTE WATER SEWER	250 WWS	HYDRO	250 WWS	WASTE WATER SEWER	250 WWS	NOTE: LOCATION OF UNDERGROUND STRUCTURES AS SHOWN ARE BASED ON THE BEST INFORMATION AVAILABLE. BUT NO GUARANTEE IS GIVEN THAT ALL EXISTING UTILITIES ARE SHOWN OR THAT THE GIVEN LOCATIONS ARE EXACT. CONFIRMATION OF EXISTENCE AND EXACT LOCATION OF ALL SERVICES MUST BE OBTAINED FROM THE INDIVIDUAL UTILITIES BEFORE PROCEEDING WITH CONSTRUCTION.
○	MANHOLE	○	MTS	○	PAVEMENT CROWN	○	
□	CATCH BASIN	□	GAS	□	N/W PROPERTY LINE	□	
△	CURB INLET	△	TESTHOLE	△	S/E PROPERTY LINE	△	
○	CULVERT	○	LAMP STANDARD	○	N/W GUTTER	○	
—	PIPE ABANDONMENTS	—	TREE	—	S/E GUTTER	—	
+	SURVEY BAR						
+	EXISTING	NEW	EXISTING	NEW	EXISTING	NEW	

METRIC
 WHOLE NUMBERS INDICATE MILLIMETRES
 DECIMALIZED NUMBERS INDICATE METRES

AECOM

DESIGNED BY: JEB
 DRAWN BY: ADL
 CHECKED BY: [Signature]
 APPROVED BY: [Signature]
 RELEASED FOR CONSTRUCTION: [Signature]
 DATE: June 5, 2012

PROFESSIONAL'S SEAL
 PROVINCE OF MANITOBA
 REGISTERED PROFESSIONAL ENGINEER
 MEMBER
 23484
 DATE: June 5, 2012

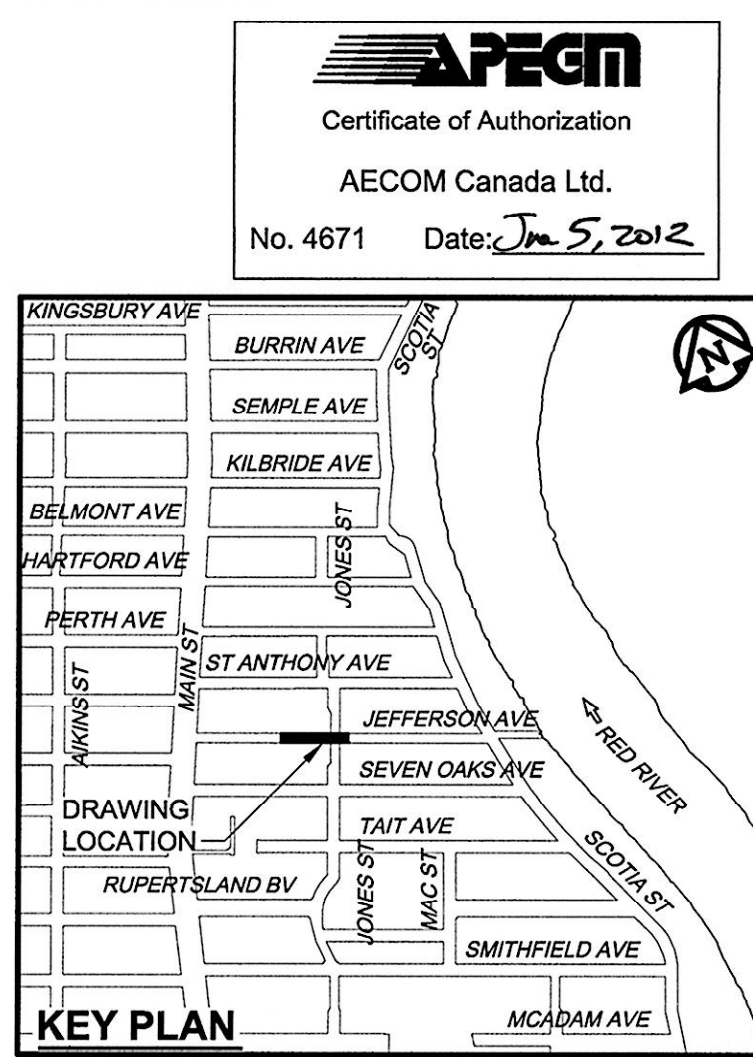
CONSULTANT DRAWING NO. 60219315-SHT-30-Ph01 C-0003.dwg

THE CITY OF WINNIPEG
 WATER AND WASTE DEPARTMENT

JEFFERSON EAST
COMBINED SEWER RELIEF
CONTRACT 1
 JEFFERSON AVENUE
 140m EAST OF MAIN STREET TO JONES STREET

SHEET 3 OF 20
 CITY DRAWING NUMBER 10153
 REV 0

BID OPPORTUNITY NO. 430-2012



APECM
 Certificate of Authorization
 AECOM Canada Ltd.
 No. 4671 Date: June 5, 2012