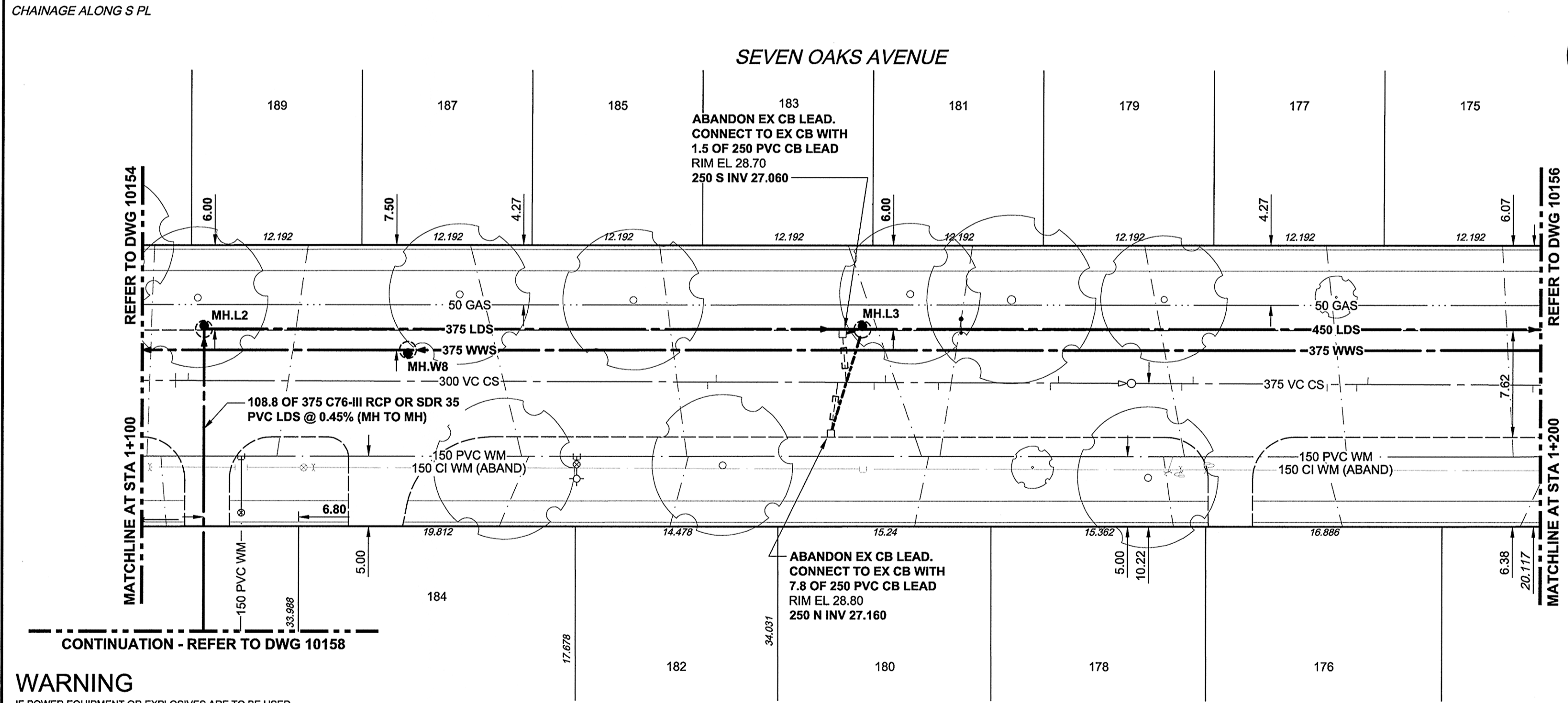
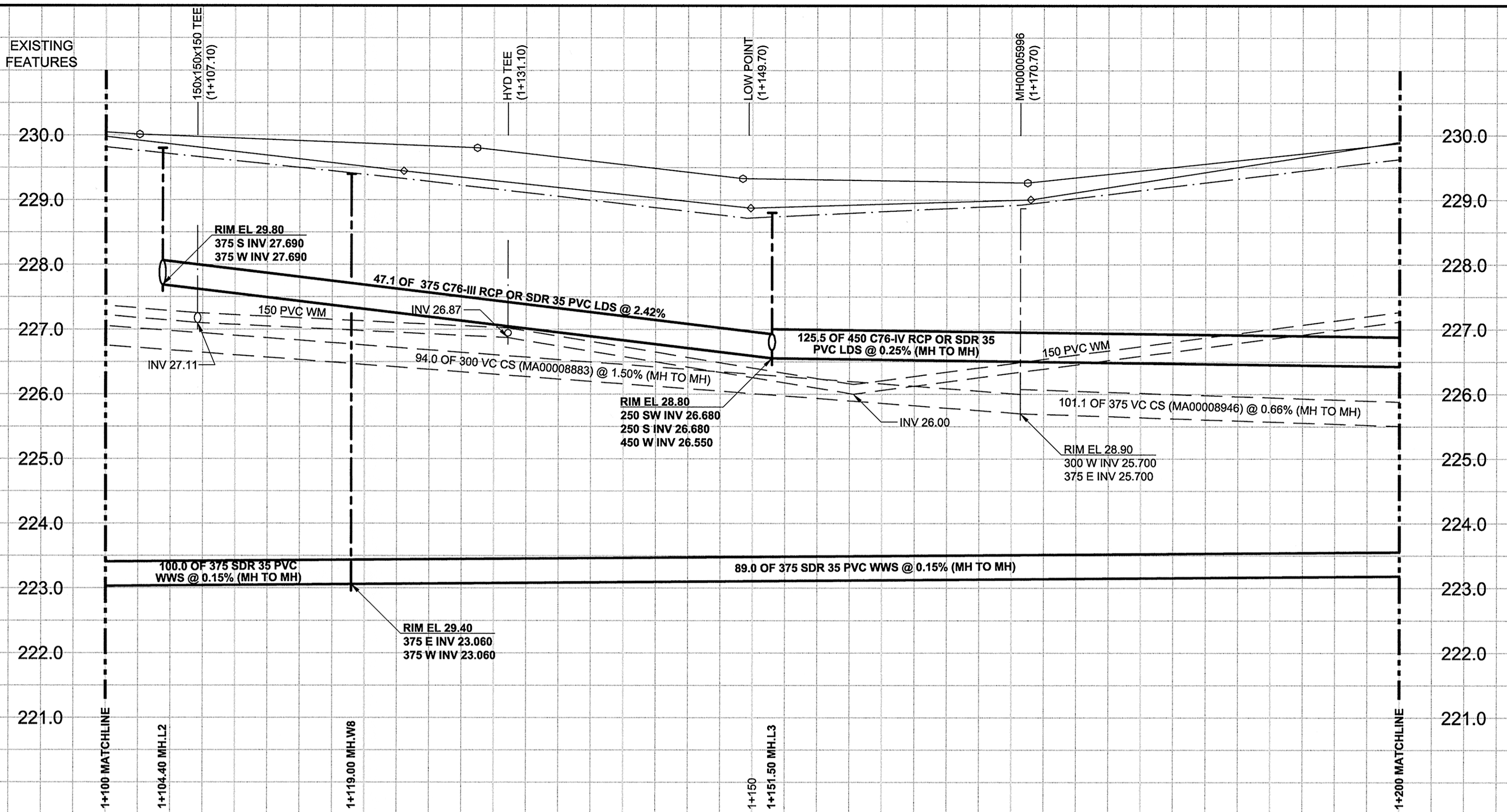


D SIZE 22" x 34" (559mm x 864mm)

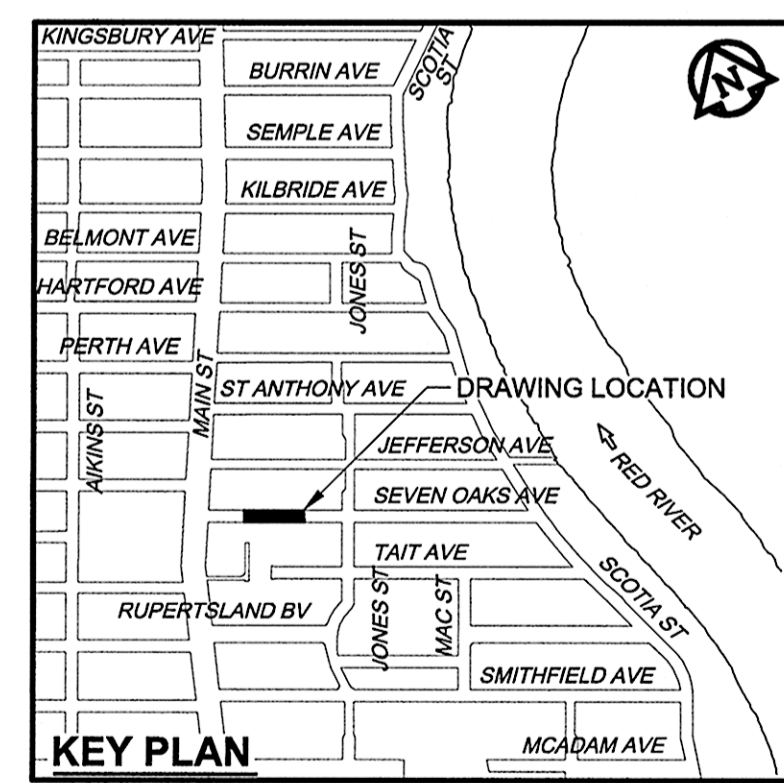
PLOT: 04/2012 12:14:28 PM

AECOM REVIEW DRT CHK



WARNING
 IF POWER EQUIPMENT OR EXPLOSIVES ARE TO BE USED FOR EXCAVATION ON THIS PROJECT, THE CONTRACTOR MUST:
 1) NOTIFY THE GAS COMPANY OF THE PROPOSED LOCATION OF EXCAVATION.
 2) TAKE PRECAUTION TO AVOID DAMAGE TO GAS COMPANY INSTALLATIONS.
 SEE PROVINCIAL REGULATION 140/92 FOR DETAILS

- CONSTRUCTION NOTES:**
- FOR DETAILED TEST HOLE INFORMATION, SEE SPECIFICATION.
 - CONFIRM LOCATION OF ALL WATER & WASTEWATER SERVICES IN THE FIELD.
 - INSTALL NEW SEWERS, CATCHBASIN LEADS AND WATERMAINS BY TRENCHLESS METHODS.
 - LOCATION OF SERVICES SHOWN ON DRAWINGS ARE APPROXIMATE.
 - ALL SHAFTS SHALL HAVE CLASS 3 BACKFILL EXCEPTING THOSE ON MAIN STREET WHICH SHALL HAVE CLASS 1 BACKFILL.



APEGM
 Certificate of Authorization
 AECOM Canada Ltd.
 No. 4671 Date: *June 5, 2012*

METRIC
 WHOLE NUMBERS INDICATE MILLIMETRES
 DECIMALIZED NUMBERS INDICATE METRES

BID OPPORTUNITY NO. 430-2012

150 WM	WATERMAIN	150 WM	150 WM	150 WM	WATERMAIN	150 WM	150 WM
○	HYDRANT	●	○	○	HYDRANT	+	+
○	VALVE	○	○	○	VALVE	+	+
○	LAND DRAINAGE SEWER	○	○	○	LAND DRAINAGE SEWER	○	○
○	WASTE WATER SEWER	○	○	○	WASTE WATER SEWER	○	○
○	MANHOLE	○	○	○	PAVEMENT CROWN	○	○
○	CATCH BASIN	○	○	○	N/W PROPERTY LINE	○	○
○	CURB INLET	○	○	○	S/E PROPERTY LINE	○	○
○	CULVERT	○	○	○	N/W GUTTER	○	○
○	PIPE ABANDONMENTS	○	○	○	S/E GUTTER	○	○
○	SURVEY BAR	○	○	○			
○	EXISTING	○	○	○	LEGEND - PLAN	○	○
○	LEGEND - PLAN	○	○	○	LEGEND - PROFILE	○	○
○	NEW	○	○	○	NEW	○	○
○	EXISTING	○	○	○	EXISTING	○	○

LOCATION APPROVED
 UNDERGROUND STRUCTURES
 SUPR. U/G STRUCTURES COMMITTEE DATE
 NOTE:
 LOCATION OF UNDERGROUND STRUCTURES AS SHOWN ARE BASED ON THE BEST INFORMATION AVAILABLE. BUT NO GUARANTEE IS GIVEN THAT ALL EXISTING UTILITIES ARE SHOWN OR THAT THE GIVEN LOCATIONS ARE EXACT. CONFIRMATION OF EXISTENCE AND EXACT LOCATION OF ALL SERVICES MUST BE OBTAINED FROM THE INDIVIDUAL UTILITIES BEFORE PROCEEDING WITH CONSTRUCTION.

NO.	ISSUED FOR CONSTRUCTION	DATE	BY
0	ISSUED FOR CONSTRUCTION	12/06/06	ADL
	REVISIONS	YY/MM/DD	

AECOM

DESIGNED BY: JEB
 DRAWN BY: ADL
 HOR. SCALE: 1:250
 VERT. SCALE: 1:50
 DATE: *June 5, 2012*

CHECKED BY: *[Signature]*
 APPROVED BY: *[Signature]*
 RELEASED FOR CONSTRUCTION: *[Signature]*
 DATE: *June 5, 2012*

PROFESSIONAL'S SEAL
AED.J. TOUPIN
 Member
 23484
 REGISTERED PROFESSIONAL ENGINEER
 CONSULTANT DRAWING NO.
 60219315-SHT-30-Ph01 C-0005.dwg

THE CITY OF WINNIPEG
 WATER AND WASTE DEPARTMENT

JEFFERSON EAST
COMBINED SEWER RELIEF
CONTRACT 1
 SEVEN OAKS AVENUE
 60m EAST OF MAIN STREET TO
 60m WEST OF JONES STREET

SHEET 5 OF 20
 CITY DRAWING NUMBER
10155
 REV 0