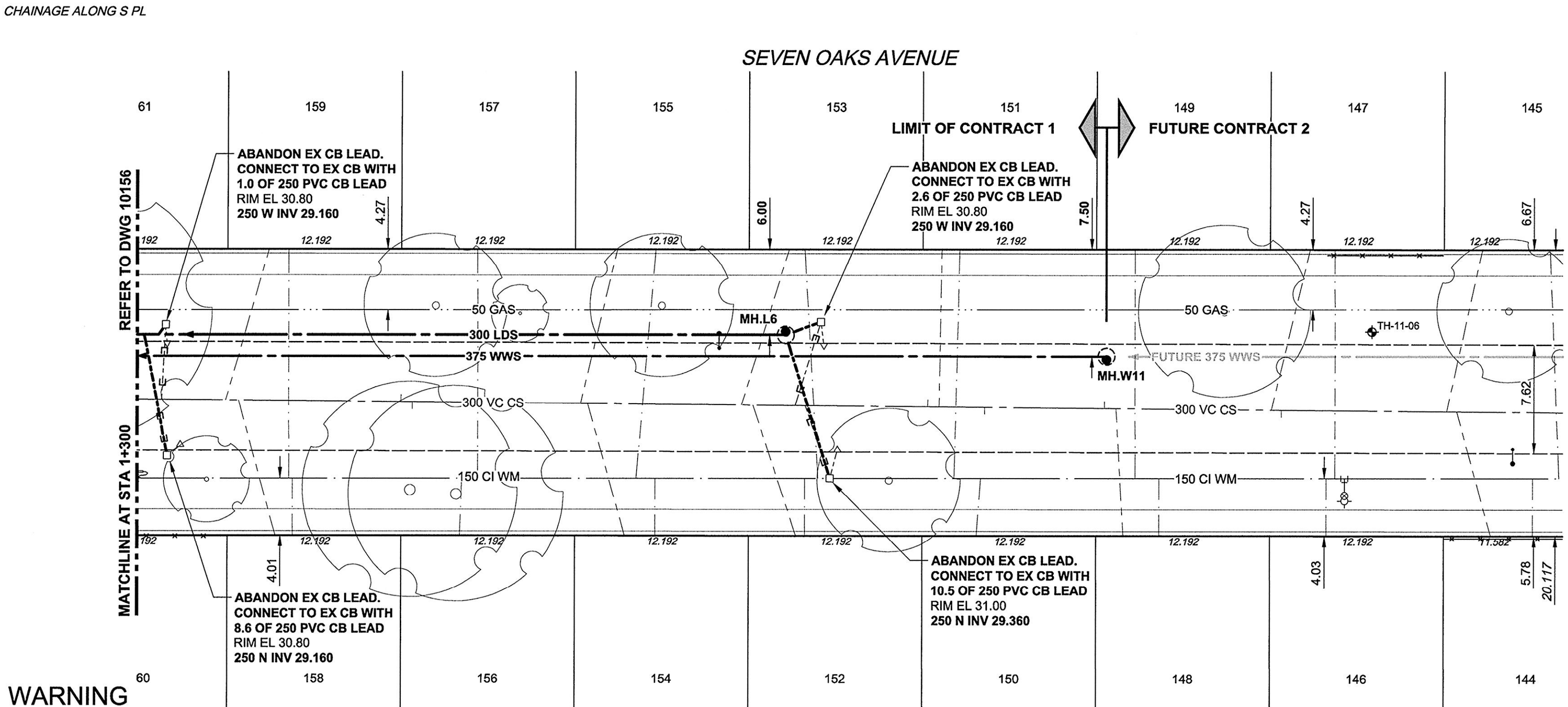
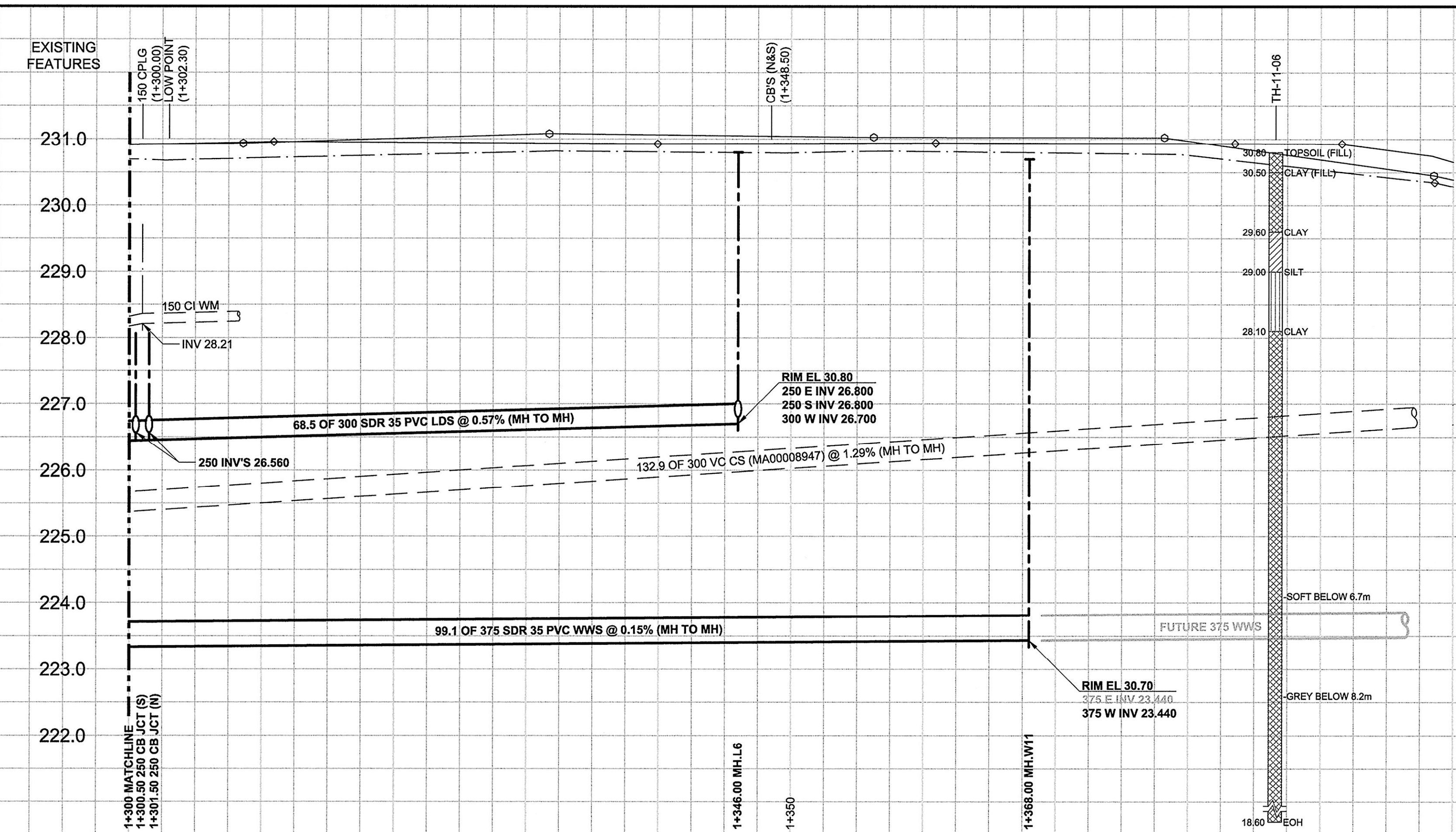


D SIZE 22" x 34" (559mm x 864mm)

PLOT: 6/5/2012 2:28:44 PM

AECOM FILE NAME: 60219315-SHT-30-Ph01 C-0007.dwg Saved By:



WARNING
 IF POWER EQUIPMENT OR EXPLOSIVES ARE TO BE USED FOR EXCAVATION ON THIS PROJECT, THE CONTRACTOR MUST:
 1) NOTIFY THE GAS COMPANY OF THE PROPOSED LOCATION OF EXCAVATION.
 2) TAKE PRECAUTION TO AVOID DAMAGE TO GAS COMPANY INSTALLATIONS.
 SEE PROVINCIAL REGULATION 140/92 FOR DETAILS

150 WM	WATERMAIN	150 WM	CURB STOP	150 WM	WATERMAIN	150 WM
	HYDRANT		REDUCER		HYDRANT	
	VALVE		COUPLING		VALVE	
	LAND DRAINAGE SEWER		ANODE		LAND DRAINAGE SEWER	
	WASTE WATER SEWER		HYDRO		WASTE WATER SEWER	
	MANHOLE		MTS		PAVEMENT CROWN	
	CATCH BASIN		N/W PROPERTY LINE		S/E PROPERTY LINE	
	CURB INLET		N/W GUTTER		S/E GUTTER	
	CULVERT		TREE			
	PIPE ABANDONMENTS					
	SURVEY BAR					
	EXISTING		NEW		EXISTING	

LOCATION APPROVED
 UNDERGROUND STRUCTURES
 SUPR. U/G STRUCTURES DATE COMMITTEE
 NOTE:
 LOCATION OF UNDERGROUND STRUCTURES AS SHOWN ARE BASED ON THE BEST INFORMATION AVAILABLE. BUT NO GUARANTEE IS GIVEN THAT ALL EXISTING UTILITIES ARE SHOWN OR THAT THE GIVEN LOCATIONS ARE EXACT. CONFIRMATION OF EXISTENCE AND EXACT LOCATION OF ALL SERVICES MUST BE OBTAINED FROM THE INDIVIDUAL UTILITIES BEFORE PROCEEDING WITH CONSTRUCTION.

NO.	REVISIONS	DATE	BY
0	ISSUED FOR CONSTRUCTION	12/06/06	ADL
		YYMMDD	

AECOM
 WHOLE NUMBERS INDICATE MILLIMETRES
 DECIMALIZED NUMBERS INDICATE METRES

DESIGNED BY: JEB
 CHECKED BY: [Signature]
 DRAWN BY: ADL
 APPROVED BY: [Signature]
 HR. SCALE: 1:250
 VERT. SCALE: 1:50
 ISSUED FOR CONSTRUCTION: 12/06/06
 DATE: June 5, 2012

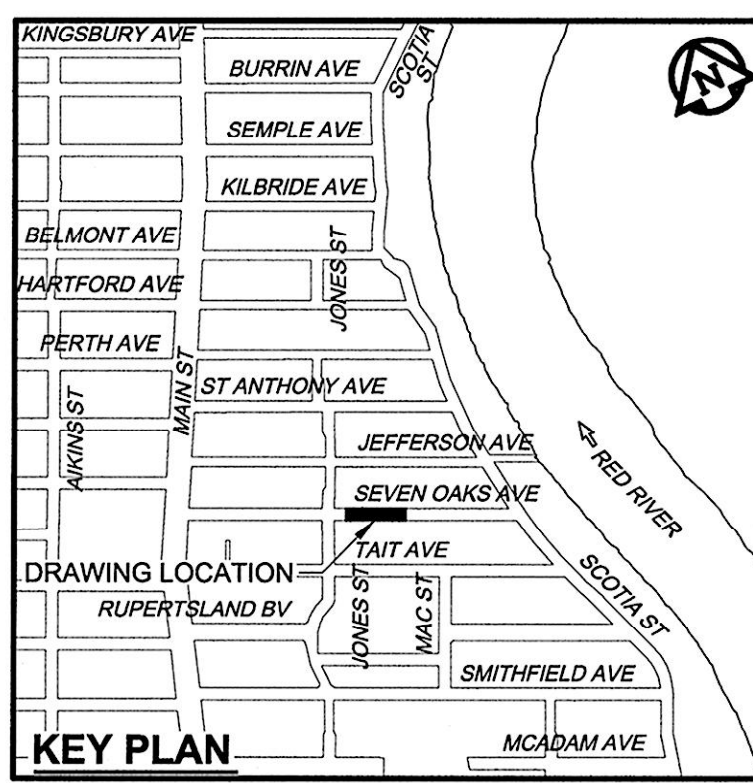
APECM
 Certificate of Authorization
 AECOM Canada Ltd.
 No. 4671 Date: June 5, 2012

PROFESSIONAL'S SEAL
 PROVINCE OF MANITOBA
 E.P.J. TOUPIN
 Member
 23484
 June 5, 2012
 REGISTERED PROFESSIONAL ENGINEER
 CONSULTANT DRAWING NO.
 60219315-SHT-30-Ph01 C-0007.dwg

THE CITY OF WINNIPEG
 WATER AND WASTE DEPARTMENT

JEFFERSON EAST
COMBINED SEWER RELIEF
CONTRACT 1
 SEVEN OAKS AVENUE
 20m EAST OF JONES STREET TO
 180m WEST OF SCOTIA STREET

SHEET 7 OF 20
 CITY DRAWING NUMBER
10157
 REV 0



- CONSTRUCTION NOTES:**
- FOR DETAILED TEST HOLE INFORMATION, SEE SPECIFICATION.
 - CONFIRM LOCATION OF ALL WATER & WASTEWATER SERVICES IN THE FIELD.
 - INSTALL NEW SEWERS, CATCHBASIN LEADS AND WATERMAINS BY TRENCHLESS METHODS.
 - LOCATION OF SERVICES SHOWN ON DRAWINGS ARE APPROXIMATE.
 - ALL SHAFTS SHALL HAVE CLASS 3 BACKFILL EXCEPTING THOSE ON MAIN STREET WHICH SHALL HAVE CLASS 1 BACKFILL.

BID OPPORTUNITY NO. 430-2012