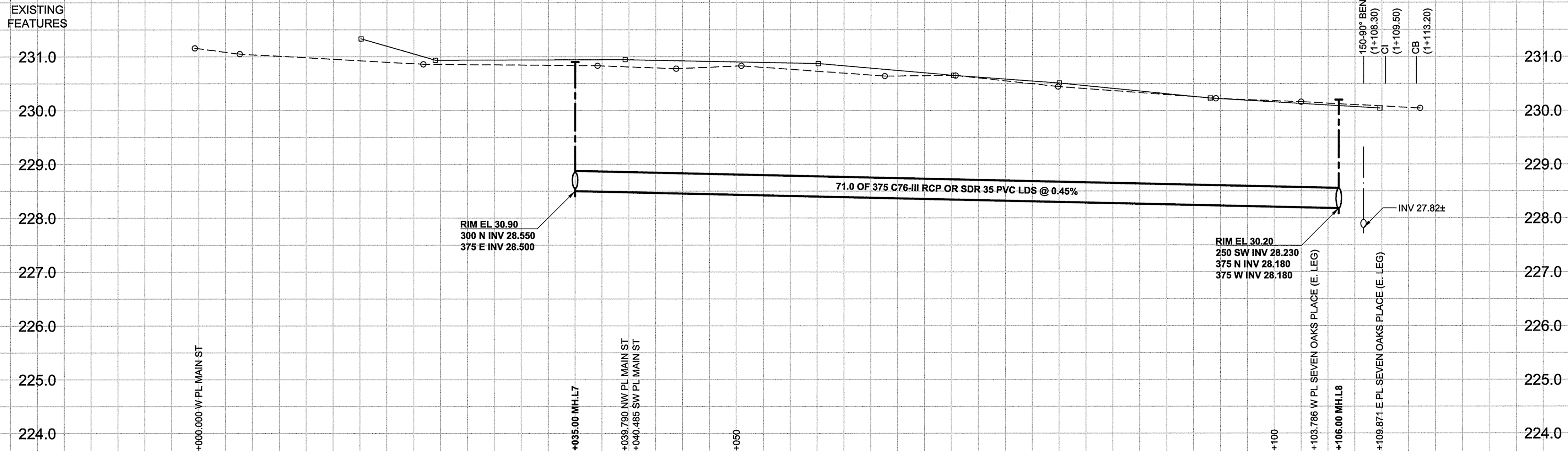


D SIZE 22" x 34" (559mm x 864mm)

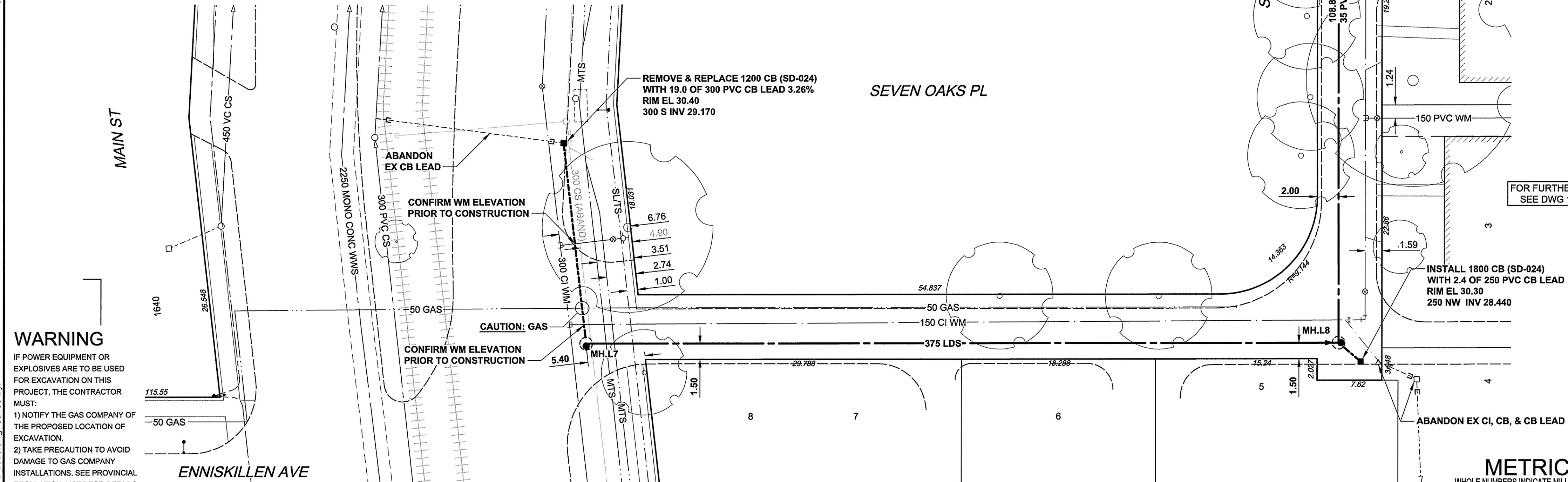
PLOT: 6/5/2012 2:08:36 PM

AECOM FILE NAME: 60219315-SHT-30-Ph01 C-0008.dwg Saved By: BIP/BI



CHAINAGE ALONG S PL

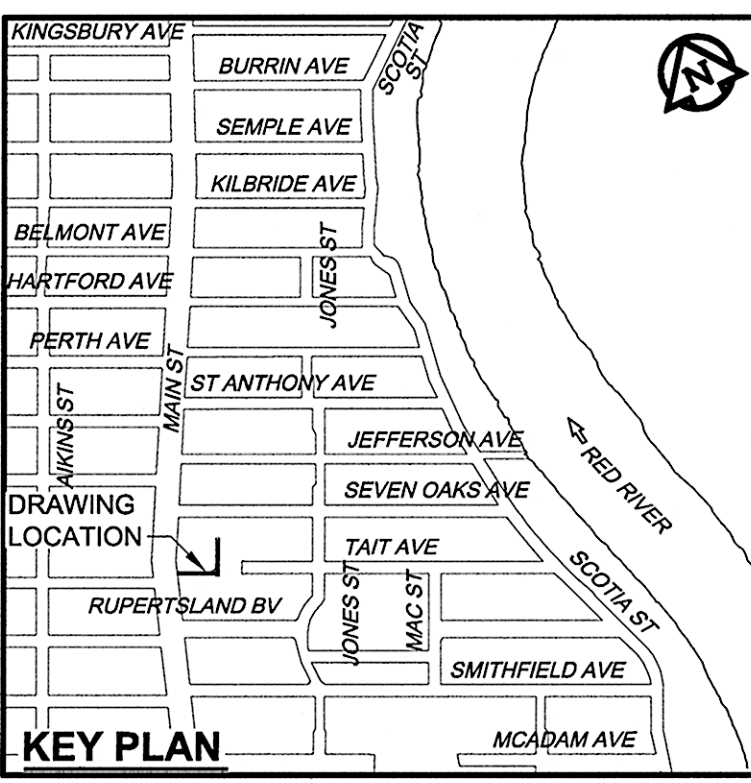
CONTINUATION - REFER TO DWG 10155



WARNING
 IF POWER EQUIPMENT OR EXPLOSIVES ARE TO BE USED FOR EXCAVATION ON THIS PROJECT, THE CONTRACTOR MUST:
 1) NOTIFY THE GAS COMPANY OF THE PROPOSED LOCATION OF EXCAVATION
 2) TAKE PRECAUTION TO AVOID DAMAGE TO GAS COMPANY INSTALLATIONS. SEE PROVINCIAL REGULATION 140/92 FOR DETAILS

FOR FURTHER INFO SEE DWG 10159

- CONSTRUCTION NOTES:**
- FOR DETAILED TEST HOLE INFORMATION, SEE SPECIFICATION.
 - CONFIRM LOCATION OF ALL WATER & WASTEWATER SERVICES IN THE FIELD.
 - INSTALL NEW SEWERS, CATCHBASIN LEADS AND WATERMAINS BY TRENCHLESS METHODS.
 - LOCATION OF SERVICES SHOWN ON DRAWINGS ARE APPROXIMATE.
 - ALL SHAFTS SHALL HAVE CLASS 3 BACKFILL EXCEPTING THOSE ON MAIN STREET WHICH SHALL HAVE CLASS 1 BACKFILL.



APEGM
 Certificate of Authorization
 AECOM Canada Ltd.
 No. 4671 Date: June 5, 2012

METRIC
 WHOLE NUMBERS INDICATE MILLIMETRES
 DECIMALIZED NUMBERS INDICATE METRES

BID OPPORTUNITY NO. 430-2012

150 WM	WATERMAIN	150 WM	CURB STOP	150 WM	WATERMAIN	150 WM
300 LDS	HYDRANT	300 LDS	REDUCER	300 LDS	HYDRANT	300 LDS
250 WWS	VALVE	250 WWS	COUPLING	250 WWS	VALVE	250 WWS
	LAND DRAINAGE SEWER		ANODE		LAND DRAINAGE SEWER	
	WASTE WATER SEWER		HYDRO		WASTE WATER SEWER	
	MANHOLE		MTS		PAVEMENT CROWN	
	CATCH BASIN		GAS		N/W PROPERTY LINE	
	CURB INLET		TESTHOLE		S/E PROPERTY LINE	
	CULVERT		LAMP STANDARD		N/W GUTTER	
	PIPE ABANDONMENTS		TREE		S/E GUTTER	
	SURVEY BAR					
	LEGEND - PLAN		LEGEND - PLAN		LEGEND - PROFILE	

LOCATION APPROVED
 UNDERGROUND STRUCTURES

SUPR. U/G STRUCTURES DATE COMMITTEE

NOTE:
 LOCATION OF UNDERGROUND STRUCTURES AS SHOWN ARE BASED ON THE BEST INFORMATION AVAILABLE. BUT NO GUARANTEE IS GIVEN THAT ALL EXISTING UTILITIES ARE SHOWN OR THAT THE GIVEN LOCATIONS ARE EXACT. CONFIRMATION OF EXISTENCE AND EXACT LOCATION OF ALL SERVICES MUST BE OBTAINED FROM THE INDIVIDUAL UTILITIES BEFORE PROCEEDING WITH CONSTRUCTION.

NO.	REVISIONS	DATE	BY
0	ISSUED FOR CONSTRUCTION	12/06/06	ADL
		YYMM/DD	

AECOM

DESIGNED BY: JEB
 CHECKED BY: [Signature]
 DRAWN BY: ADL
 APPROVED BY: [Signature]
 HOR. SCALE: 1:250
 VERT. SCALE: 1:50
 DATE: June 5, 2012
 RELEASED FOR CONSTRUCTION: [Signature]
 DATE: June 5, 2012

PROFESSIONAL'S SEAL
George D.J. TOUPIN
 Member 23484
 CONSULTANT DRAWING NO.
 60219315-SHT-30-Ph01 C-0008.dwg

THE CITY OF WINNIPEG
 WATER AND WASTE DEPARTMENT

JEFFERSON EAST
COMBINED SEWER RELIEF
CONTRACT 1
SEVEN OAKS PLACE (S. LEG)
 MAIN STREET TO SEVEN OAKS PLACE (E. LEG)

SHEET 8 OF 20
 CITY DRAWING NUMBER
10158
 REV 0