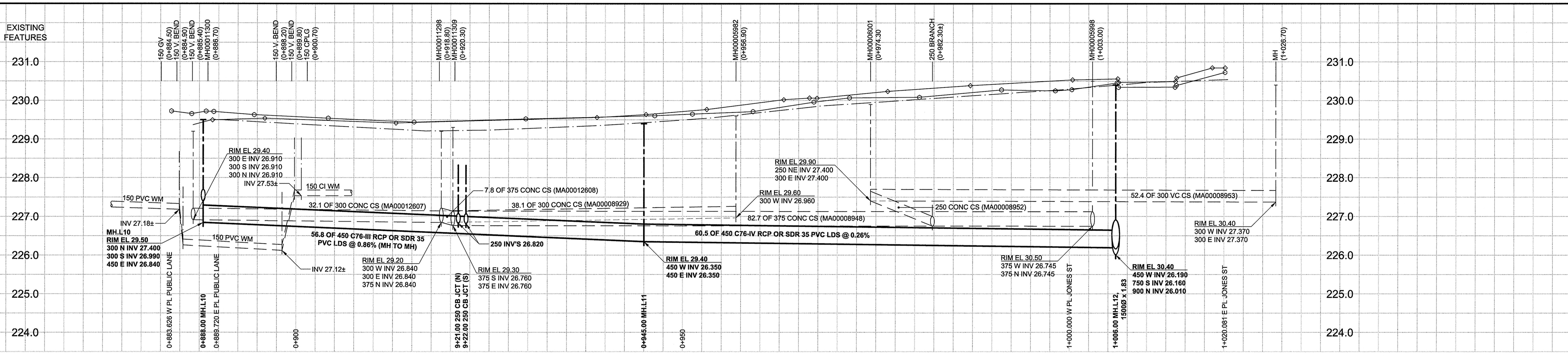
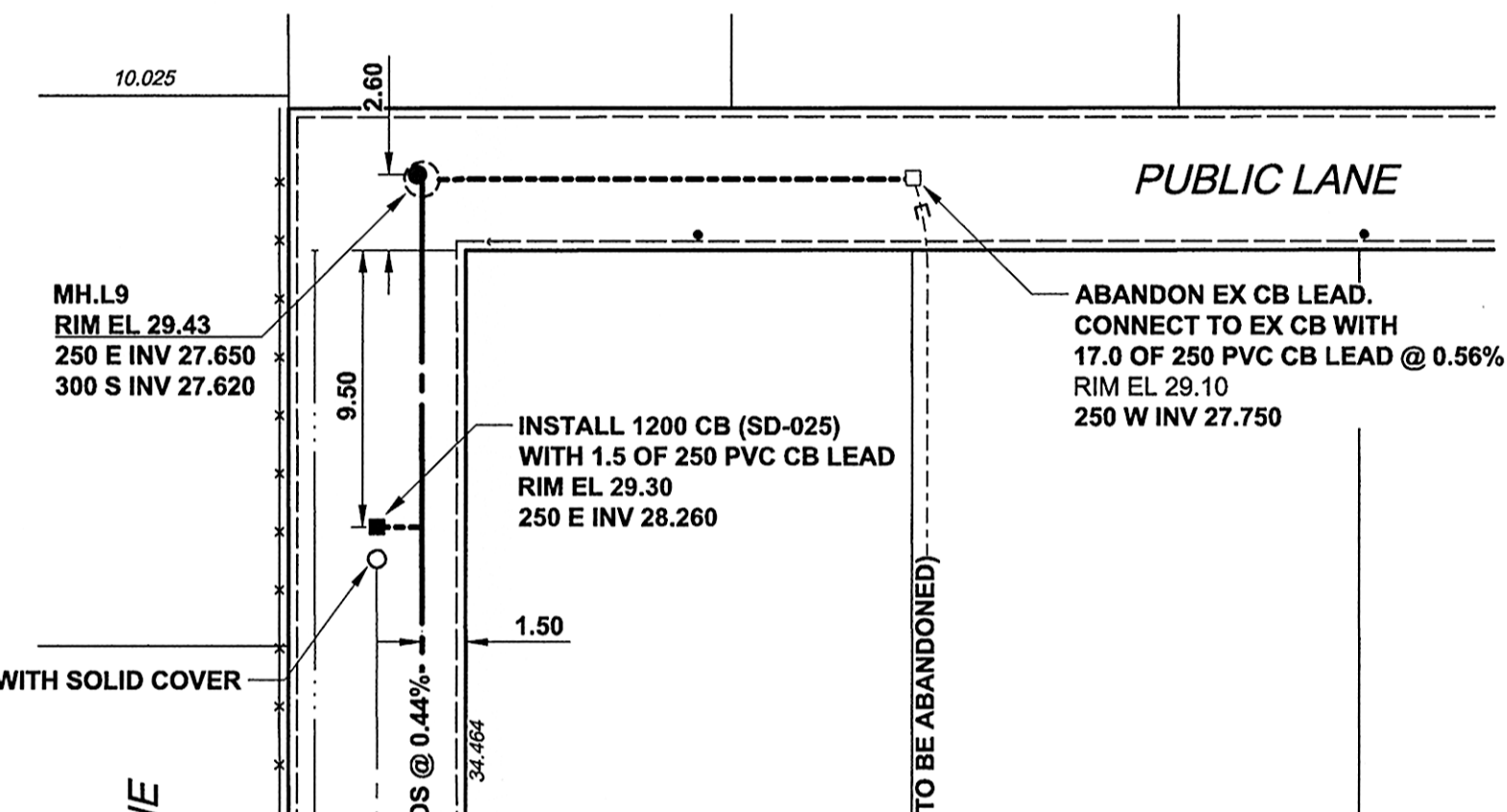


D SIZE 22" x 34" (559mm x 864mm)



CHAINAGE ALONG S PL



WATER SERVICE INFORMATION

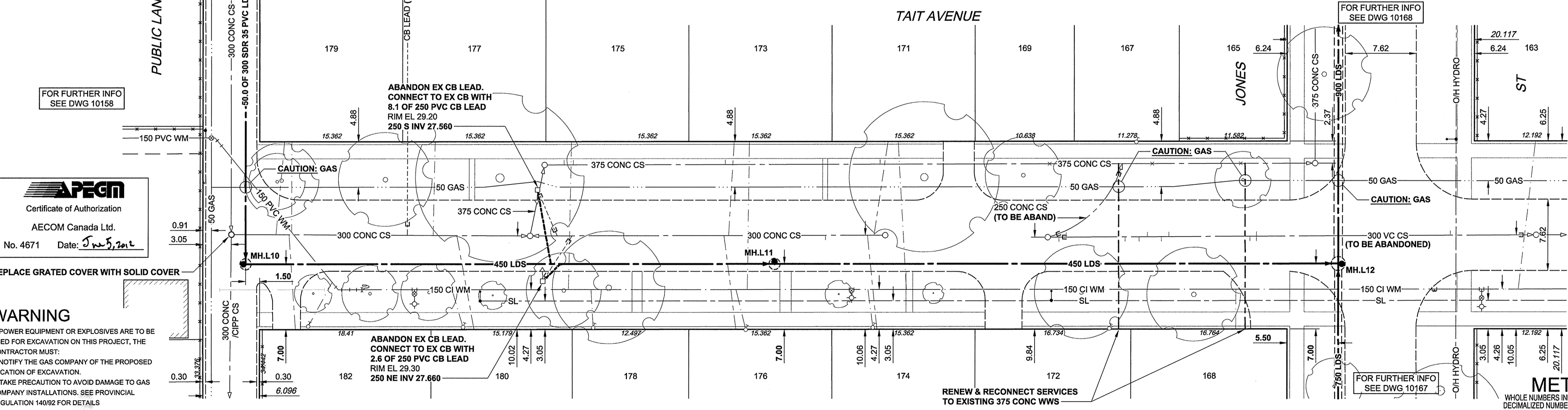
ADDRESS	DISTANCE	SIZE (mm)	SHORT & LONG MEASUREMENT	CORPORATION LOCATION	REMARKS
160 TAIT	0.15	20	3.3m EWL OF HOUSE	0.50m W OF S/C	COPPER
161 TAIT	0.15	20	0.2m WEL OF HOUSE	OPP S/C	LEAD
162 TAIT	0.15	20	3.9m WEL OF HOUSE	0.15m W OF S/C	COPPER
163 TAIT	0.15	20	6.7m EEL OF JONES	1.83m W OF S/C	COPPER
165 TAIT					NO INFO
167 TAIT					NO INFO
168 TAIT	0.30	20	4.6m WEL OF HOUSE	OPP S/C	COPPER
169 TAIT					NO INFO
171 TAIT	0.15	20	4.8m WEL OF HOUSE	0.91m E OF S/C	COPPER
172 TAIT					NO INFO
174 TAIT	PROPERTY	20	0.9m EWL OF HOUSE	0.30m W OF S/C	COPPER

SEWER SERVICE INFORMATION

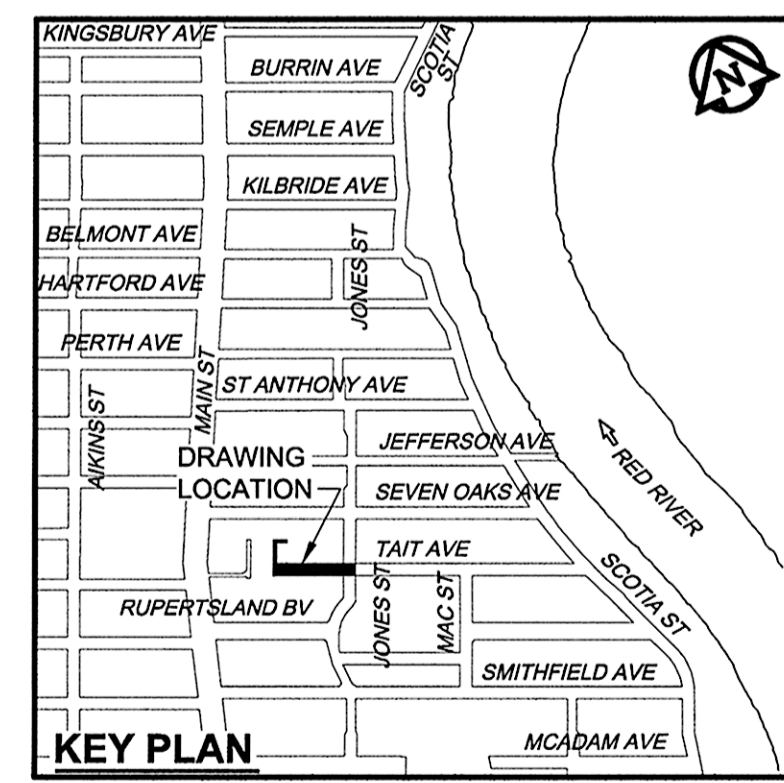
ADDRESS	PL TIE (SHORT/LONG)	JUNCTION TIE	REMARKS
161 TAIT		70.1m 1ST MH W MAC	
162 TAIT		2.6m E MH JONES	
163 TAIT		UNKNOWN	
165 TAIT			NO INFO
167 TAIT			NO INFO
168 TAIT		UNKNOWN	
169 TAIT			NO INFO
171 TAIT		66.3m E MH IN LANE W JONES	
172 TAIT			NO INFO
174 TAIT		68.0m E MH IN LANE W JONES	

CONSTRUCTION NOTES:

- FOR DETAILED TEST HOLE INFORMATION, SEE SPECIFICATION.
- CONFIRM LOCATION OF ALL WATER & WASTEWATER SERVICES IN THE FIELD.
- INSTALL NEW SEWERS, CATCHBASIN LEADS AND WATERMAINS BY TRENCHLESS METHODS.
- LOCATION OF SERVICES SHOWN ON DRAWINGS ARE APPROXIMATE.
- ALL SHAFTS SHALL HAVE CLASS 3 BACKFILL EXCEPTING THOSE ON MAIN STREET WHICH SHALL HAVE CLASS 1 BACKFILL.



WARNING
IF POWER EQUIPMENT OR EXPLOSIVES ARE TO BE USED FOR EXCAVATION ON THIS PROJECT, THE CONTRACTOR MUST:
1) NOTIFY THE GAS COMPANY OF THE PROPOSED LOCATION OF EXCAVATION.
2) TAKE PRECAUTION TO AVOID DAMAGE TO GAS COMPANY INSTALLATIONS. SEE PROVINCIAL REGULATION 140/92 FOR DETAILS



METRIC
WHOLE NUMBERS INDICATE MILLIMETRES
DECIMALIZED NUMBERS INDICATE METRES

BID OPPORTUNITY NO. 430-2012

AECOM REVIEW DRFT CHK

150 WM	WATERMAIN	150 WM	CURB STOP	150 WM	WATERMAIN	150 WM
	HYDRANT		REDUCER		HYDRANT	
	VALVE		COUPLING		VALVE	
	LAND DRAINAGE SEWER		ANODE		LAND DRAINAGE SEWER	
	WASTE WATER SEWER		HYDRO		WASTE WATER SEWER	
	MANHOLE		MTS		PAVEMENT CROWN	
	CATCH BASIN		GAS		N/W PROPERTY LINE	
	CURB INLET		TESTHOLE		S/E PROPERTY LINE	
	CULVERT		LAMP STANDARD		N/W GUTTER	
	PIPE ABANDONMENTS		TREE		S/E GUTTER	
	SURVEY BAR					
	EXISTING		LEGEND - PLAN		LEGEND - PROFILE	

LOCATION APPROVED
UNDERGROUND STRUCTURES
SUPR. I/G STRUCTURES COMMITTEE DATE
NOTE:
LOCATION OF UNDERGROUND STRUCTURES AS SHOWN ARE BASED ON THE BEST INFORMATION AVAILABLE. BUT NO GUARANTEE IS GIVEN THAT ALL EXISTING UTILITIES ARE SHOWN OR THAT THE GIVEN LOCATIONS ARE EXACT. CONFIRMATION OF EXISTENCE AND EXACT LOCATION OF ALL SERVICES MUST BE OBTAINED FROM THE INDIVIDUAL UTILITIES BEFORE PROCEEDING WITH CONSTRUCTION.

NO.	REVISIONS	DATE	BY
0	ISSUED FOR CONSTRUCTION	12/06/06	ADL
		YYMMDD	

AECOM

DESIGNED BY: JEB
CHECKED BY: [Signature]
DRAWN BY: ADL
APPROVED BY: [Signature]
HOR. SCALE: 1:250
VERT. SCALE: 1:50
DATE: June 5, 2012

PROFESSIONAL'S SEAL
PROVINCE OF MANITOBA
REGISTERED PROFESSIONAL ENGINEER
Gyngel J. TOUPIN
Member
23484
June 5, 2012
CONSULTANT DRAWING NO.
60219315-SHT-30-Ph01 C-0009.dwg

THE CITY OF WINNIPEG
WATER AND WASTE DEPARTMENT

JEFFERSON EAST
COMBINED SEWER RELIEF
CONTRACT 1
TAIT AVENUE
PUBLIC LANE WEST OF JONES STREET TO JONES STREET

SHEET 9 OF 20
CITY DRAWING NUMBER
10159
REV 0