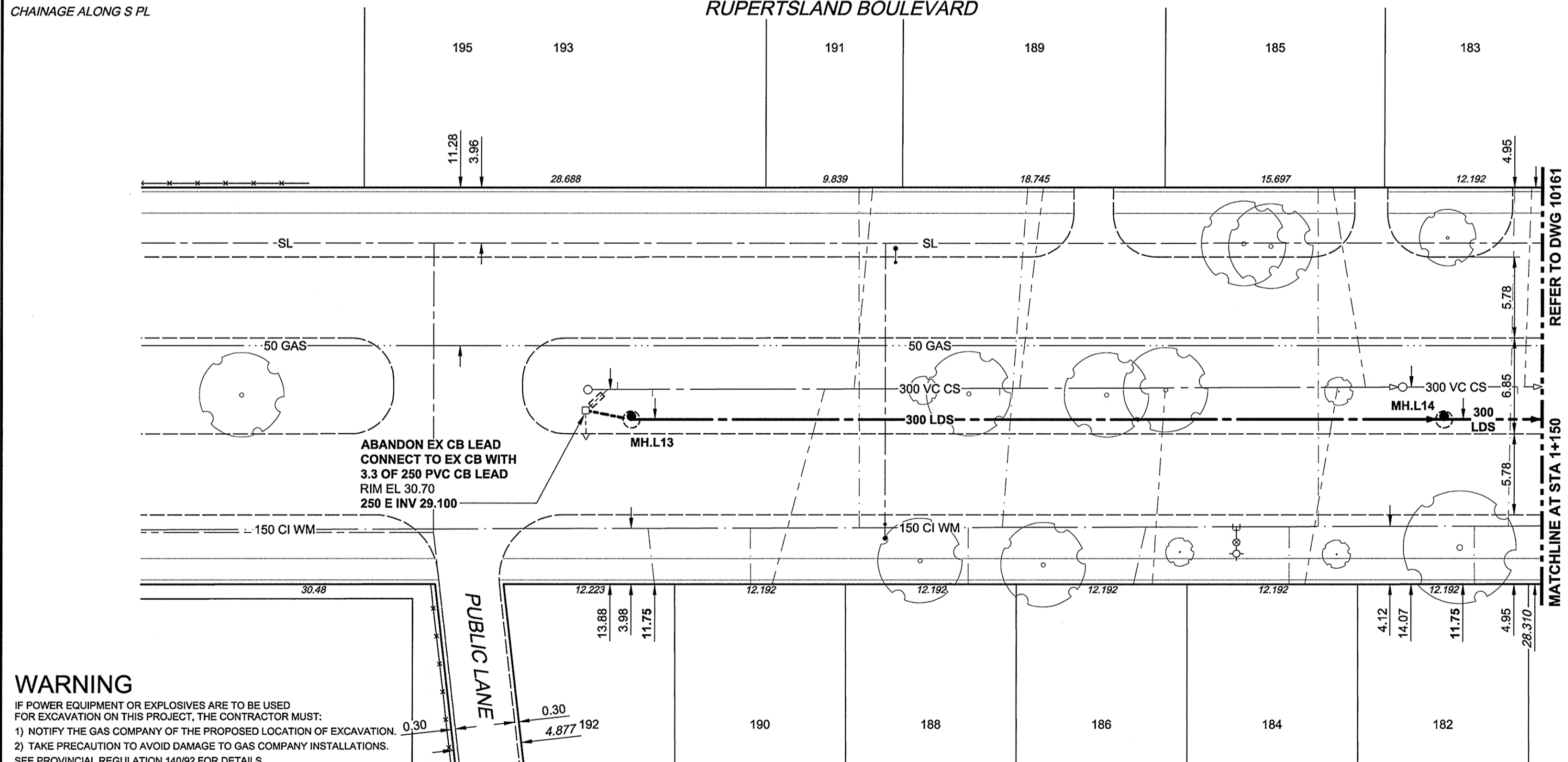
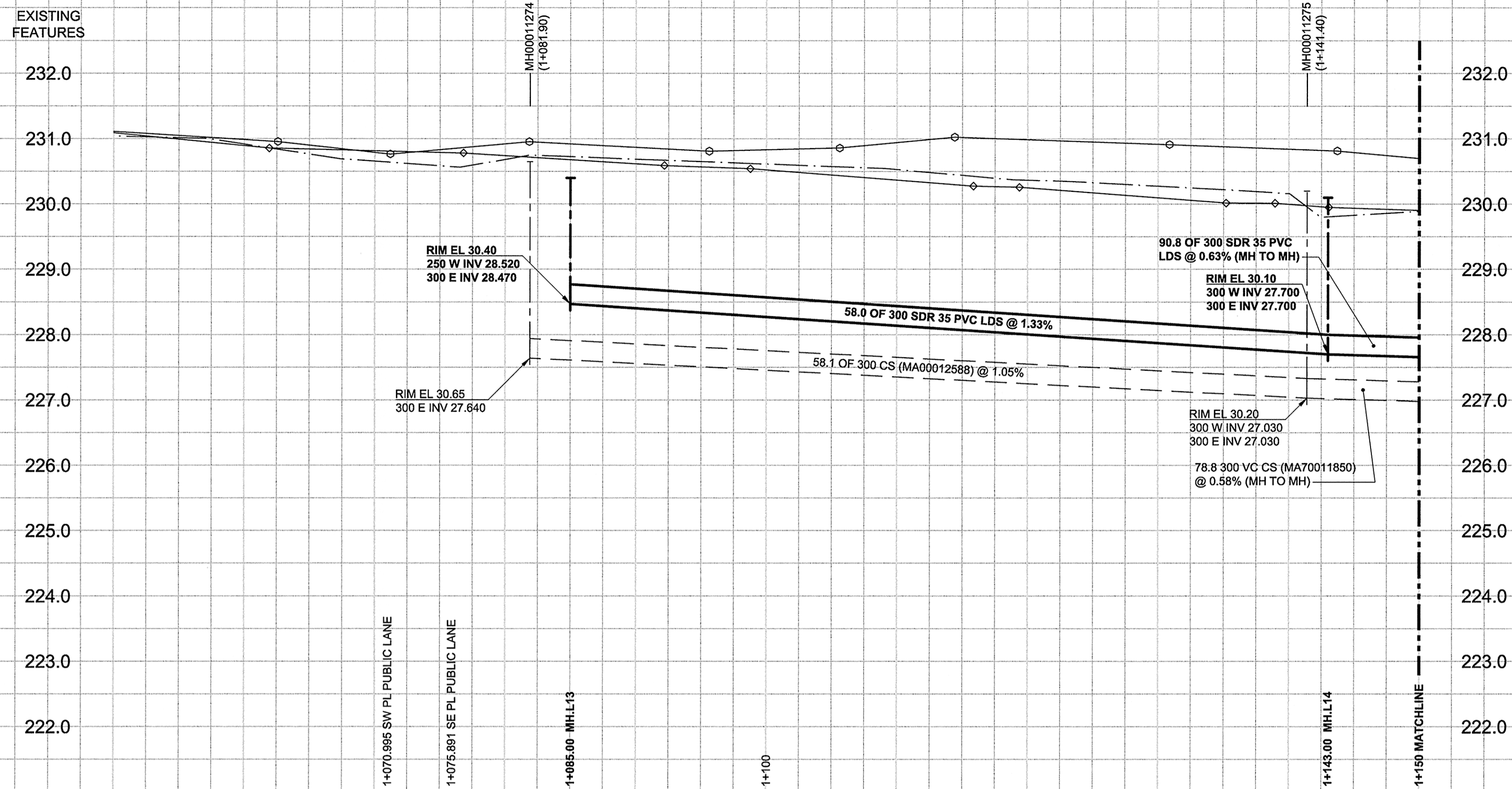


D SIZE 22" x 34" (559mm x 864mm)

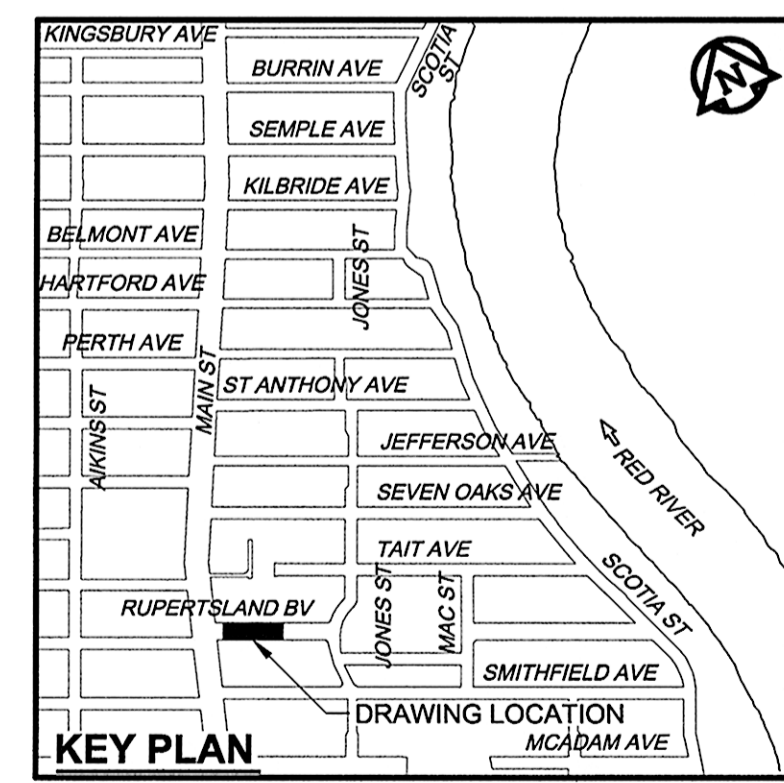
PLOT: 6/5/2012 2:37:09 PM

AECOM REVIEW DRFT CHK
AECOM FILE NAME: 60219315-SHT-30-Ph01 C-0010.dwg Saved By:



WARNING
IF POWER EQUIPMENT OR EXPLOSIVES ARE TO BE USED FOR EXCAVATION ON THIS PROJECT, THE CONTRACTOR MUST:
1) NOTIFY THE GAS COMPANY OF THE PROPOSED LOCATION OF EXCAVATION.
2) TAKE PRECAUTION TO AVOID DAMAGE TO GAS COMPANY INSTALLATIONS.
SEE PROVINCIAL REGULATION 149/92 FOR DETAILS

- CONSTRUCTION NOTES:**
- FOR DETAILED TEST HOLE INFORMATION, SEE SPECIFICATION.
 - CONFIRM LOCATION OF ALL WATER & WASTEWATER SERVICES IN THE FIELD.
 - INSTALL NEW SEWERS, CATCHBASIN LEADS AND WATERMANS BY TRENCHLESS METHODS.
 - LOCATION OF SERVICES SHOWN ON DRAWINGS ARE APPROXIMATE.
 - ALL SHAFTS SHALL HAVE CLASS 3 BACKFILL EXCEPTING THOSE ON MAIN STREET WHICH SHALL HAVE CLASS 1 BACKFILL.



APEGM
Certificate of Authorization
AECOM Canada Ltd.
No. 4671 Date: *June 5, 2012*

METRIC
WHOLE NUMBERS INDICATE MILLIMETRES
DECIMALIZED NUMBERS INDICATE METRES

BID OPPORTUNITY NO. 430-2012

150 WM	WATERMAIN	150 WM	CURB STOP	150 WM	WATERMAIN	150 WM
	HYDRANT		REDUCER		HYDRANT	
	VALVE		COUPLING		VALVE	
	LAND DRAINAGE SEWER		ANODE		LAND DRAINAGE SEWER	
	WASTE WATER SEWER		HYDRO		WASTE WATER SEWER	
	MANHOLE		MTS		MANHOLE	
	CATCH BASIN		GAS		CATCH BASIN	
	CURB INLET		TESTHOLE		CURB INLET	
	CULVERT		LAMP STANDARD		CULVERT	
	PIPE ABANDONMENTS		TREE		PIPE ABANDONMENTS	
	SURVEY BAR				SURVEY BAR	
	EXISTING		NEW		EXISTING	

LOCATION APPROVED
UNDERGROUND STRUCTURES

DATE: _____

NOTE:
LOCATION OF UNDERGROUND STRUCTURES AS SHOWN ARE BASED ON THE BEST INFORMATION AVAILABLE. BUT NO GUARANTEE IS GIVEN THAT ALL EXISTING UTILITIES ARE SHOWN OR THAT THE GIVEN LOCATIONS ARE EXACT. CONFIRMATION OF EXISTENCE AND EXACT LOCATION OF ALL SERVICES MUST BE OBTAINED FROM THE INDIVIDUAL UTILITIES BEFORE PROCEEDING WITH CONSTRUCTION.

NO.	ISSUED FOR CONSTRUCTION	DATE	BY
0	ISSUED FOR CONSTRUCTION	12/06/06	ADL
	REVISIONS	YYMMDD	BY

DESIGNED BY	JEB	CHECKED BY	<i>[Signature]</i>
DRAWN BY	ADL	APPROVED BY	<i>[Signature]</i>
HOR. SCALE	1:250	RELEASED FOR CONSTRUCTION	<i>[Signature]</i>
VERT. SCALE	1:50	DATE	<i>June 5, 2012</i>

PROFESSIONAL'S SEAL
ED.J. TOUPIN
Member
23484
CONSULTANT DRAWING NO.
60219315-SHT-30-Ph01 C-0010.dwg

THE CITY OF WINNIPEG
Winnipeg
WATER AND WASTE DEPARTMENT

JEFFERSON EAST
COMBINED SEWER RELIEF
CONTRACT 1
RUPERTSLAND BOULEVARD
10m EAST OF MAIN STREET TO
70m WEST OF JONES STREET

SHEET 10 OF 20
CITY DRAWING NUMBER
10160
REV 0