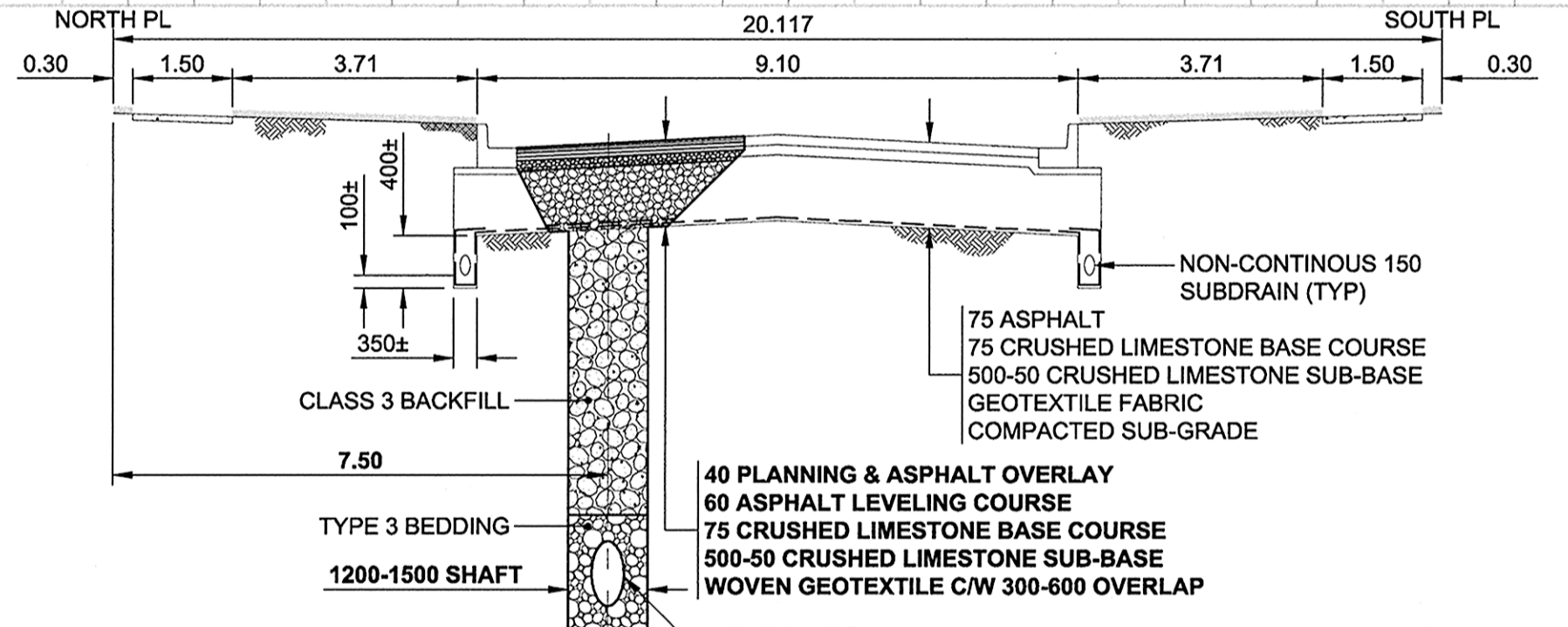
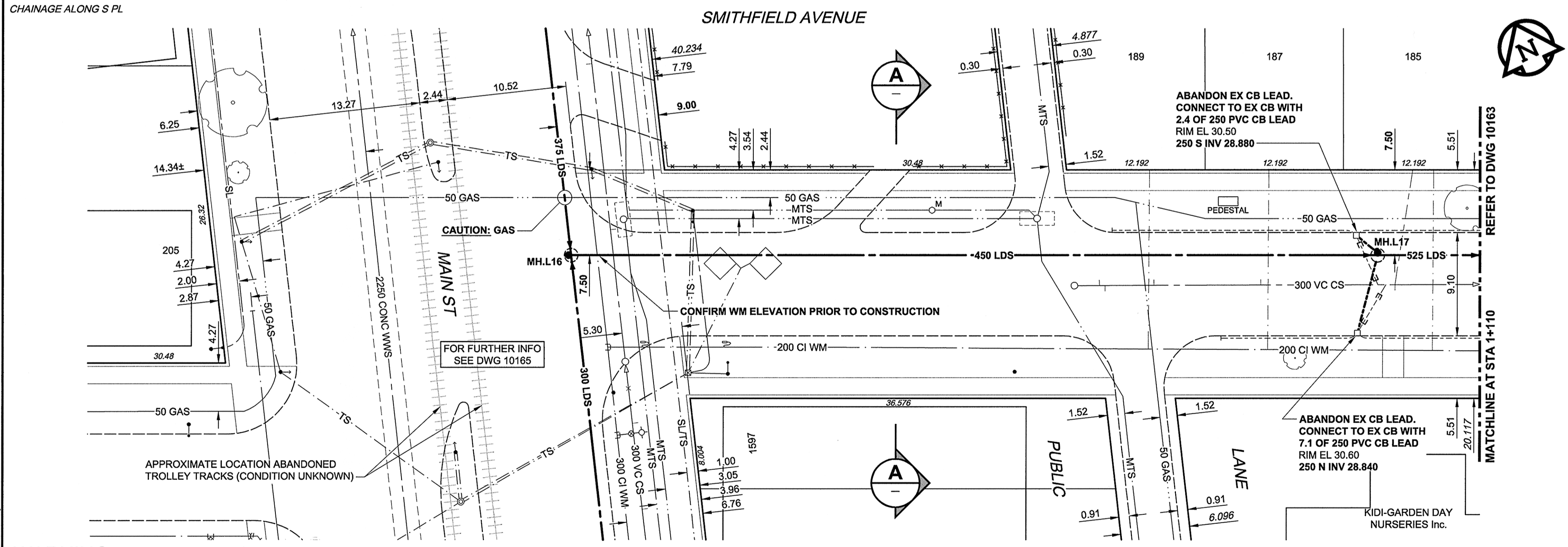
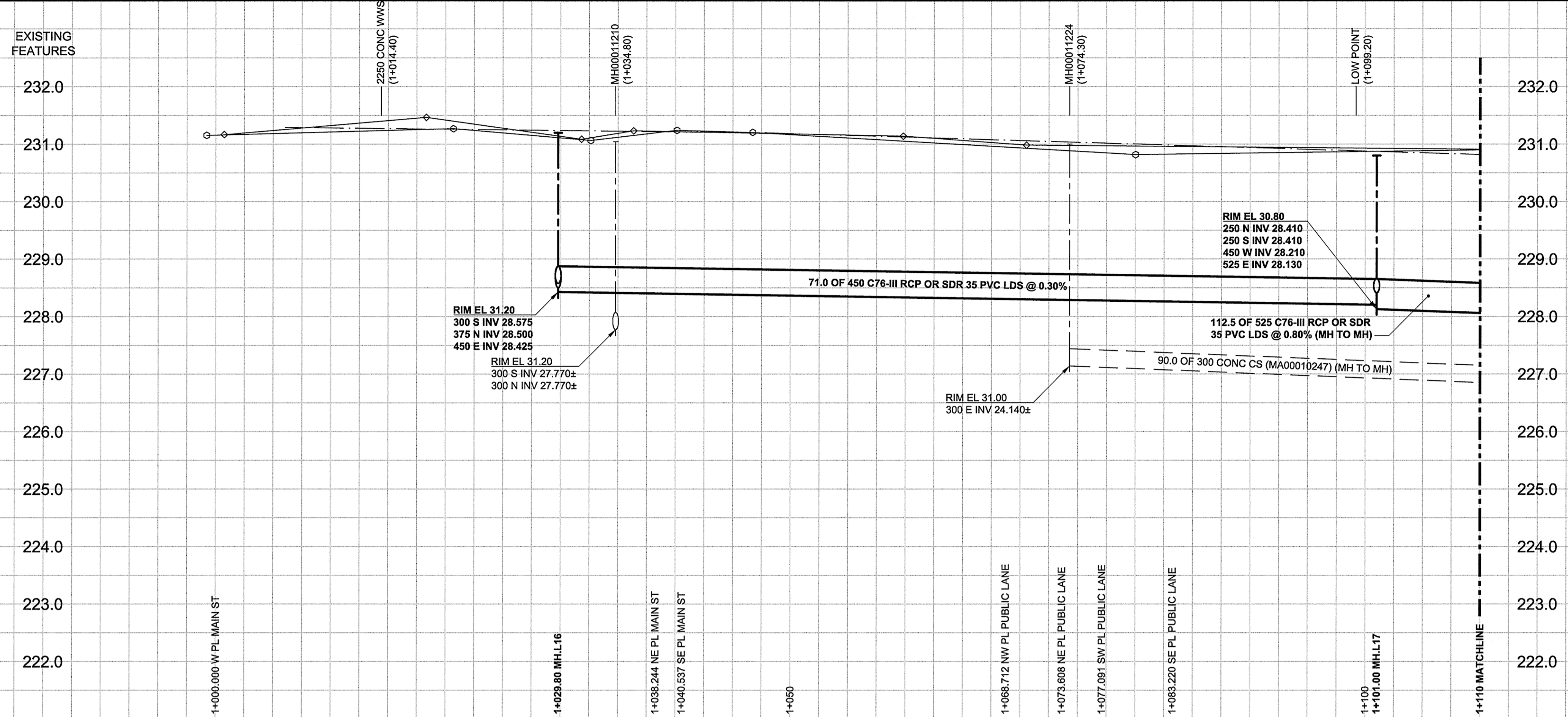


D SIZE 22" x 34" (559mm x 864mm)

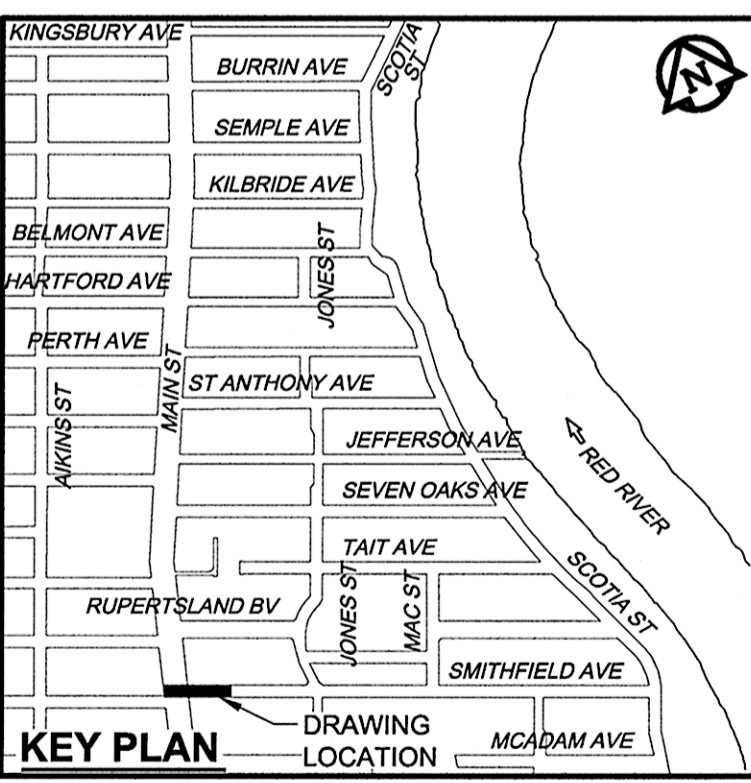
PLOT: 6/4/2012 12:25:03 PM

AECOM REVIEW DRAFT CHK



**SECTION**  
 0 1 2 3 m H=1:100  
 0 0.5 1 1.5 V=1:50  
 TYPICAL EXISTING ASPHALT PAVEMENT RESTORATION AT ALL SHAFT LOCATIONS ON SMITHFIELD AVENUE

- CONSTRUCTION NOTES:**
- FOR DETAILED TEST HOLE INFORMATION, SEE SPECIFICATION.
  - CONFIRM LOCATION OF ALL WATER & WASTEWATER SERVICES IN THE FIELD.
  - INSTALL NEW SEWERS, CATCHBASIN LEADS AND WATERMAINS BY TRENCHLESS METHODS.
  - LOCATION OF SERVICES SHOWN ON DRAWINGS ARE APPROXIMATE.
  - ALL SHAFTS SHALL HAVE CLASS 3 BACKFILL EXCEPTING THOSE ON MAIN STREET WHICH SHALL HAVE CLASS 1 BACKFILL.



**WARNING**  
 IF POWER EQUIPMENT OR EXPLOSIVES ARE TO BE USED FOR EXCAVATION ON THIS PROJECT, THE CONTRACTOR MUST:  
 1) NOTIFY THE GAS COMPANY OF THE PROPOSED LOCATION OF EXCAVATION.  
 2) TAKE PRECAUTION TO AVOID DAMAGE TO GAS COMPANY INSTALLATIONS.  
 SEE PROVINCIAL REGULATION 140/92 FOR DETAILS

150 WM	WATERMAIN	150 WM	CURB STOP	150 WM	WATERMAIN	150 WM
	HYDRANT		REDUCER		HYDRANT	
	VALVE		COUPLING		VALVE	
	LAND DRAINAGE SEWER		ANODE		LAND DRAINAGE SEWER	
	WASTE WATER SEWER		HYDRO		WASTE WATER SEWER	
	MANHOLE		MTS		MANHOLE	
	CATCH BASIN		GAS		CATCH BASIN	
	CURB INLET		TESTHOLE		CURB INLET	
	CULVERT		LAMP STANDARD		CULVERT	
	PIPE ABANDONMENTS		TREE		PIPE ABANDONMENTS	
	SURVEY BAR				SURVEY BAR	
	EXISTING		NEW		EXISTING	

**LOCATION APPROVED**  
 UNDERGROUND STRUCTURES  
 SUPR. U/G STRUCTURES COMMITTEE DATE  
 NOTE:  
 LOCATION OF UNDERGROUND STRUCTURES AS SHOWN ARE BASED ON THE BEST INFORMATION AVAILABLE. BUT NO GUARANTEE IS GIVEN THAT ALL EXISTING UTILITIES ARE SHOWN OR THAT THE GIVEN LOCATIONS ARE EXACT. CONFIRMATION OF EXISTENCE AND EXACT LOCATION OF ALL SERVICES MUST BE OBTAINED FROM THE INDIVIDUAL UTILITIES BEFORE PROCEEDING WITH CONSTRUCTION.

NO.	REVISIONS	DATE	BY
0	ISSUED FOR CONSTRUCTION	12/06/06	ADL

**AECOM**  
 WHOLE NUMBERS INDICATE MILLIMETRES  
 DECIMALIZED NUMBERS INDICATE METRES

DESIGNED BY: JEB  
 CHECKED BY: [Signature]  
 DRAWN BY: ADL  
 APPROVED BY: [Signature]  
 HOR. SCALE: 1:250  
 VERT. SCALE: 1:50  
 DATE: June 5, 2012

**APEGM**  
 Certificate of Authorization  
 AECOM Canada Ltd.  
 No. 4671 Date: June 5, 2012

**THE CITY OF WINNIPEG**  
 WATER AND WASTE DEPARTMENT

**JEFFERSON EAST**  
**COMBINED SEWER RELIEF**  
**CONTRACT 1**  
**SMITHFIELD AVENUE**  
 MAIN STREET TO  
 135m WEST OF JONES STREET

SHEET 12 OF 20  
 CITY DRAWING NUMBER  
**10162**  
 REV 0

BID OPPORTUNITY NO. 430-2012