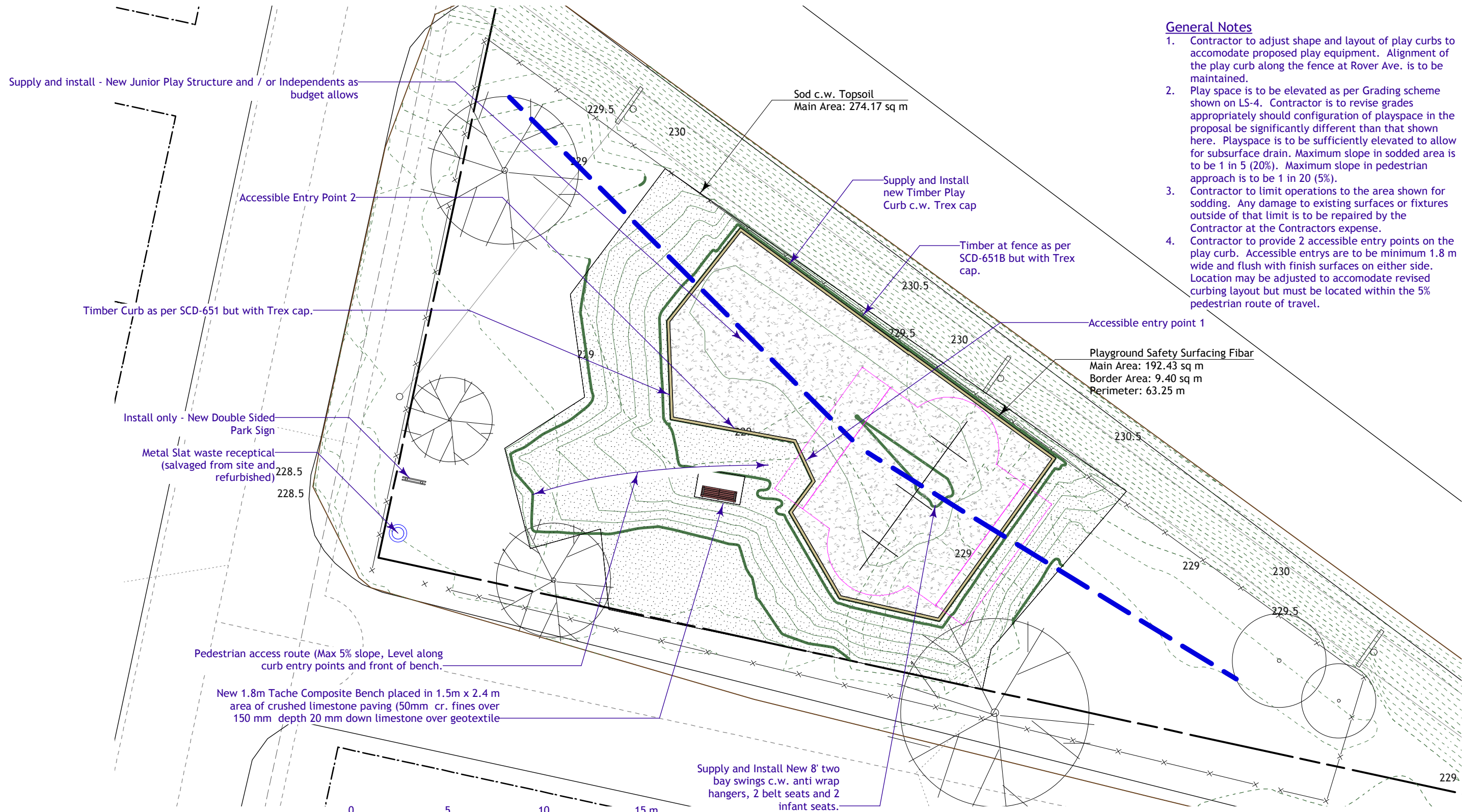


General Notes

1. Contractor to adjust shape and layout of play curbs to accommodate proposed play equipment. Alignment of the play curb along the fence at Rover Ave. is to be maintained.
2. Play space is to be elevated as per Grading scheme shown on LS-4. Contractor is to revise grades appropriately should configuration of playspace in the proposal be significantly different than that shown here. Playspace is to be sufficiently elevated to allow for subsurface drain. Maximum slope in sodded area is to be 1 in 5 (20%). Maximum slope in pedestrian approach is to be 1 in 20 (5%).
3. Contractor to limit operations to the area shown for sodding. Any damage to existing surfaces or fixtures outside of that limit is to be repaired by the Contractor at the Contractors expense.
4. Contractor to provide 2 accessible entry points on the play curb. Accessible entries are to be minimum 1.8 m wide and flush with finish surfaces on either side. Location may be adjusted to accommodate revised curbing layout but must be located within the 5% pedestrian route of travel.



1 Project Scope Plan
LS-3 Scale: 1:200

1 5/28/12 For Bid Opportunity

No.	Date	Issue Notes

Drawing No.

LS-3 of 4

Syndicate Tot Lot

Project Scope Plan

