

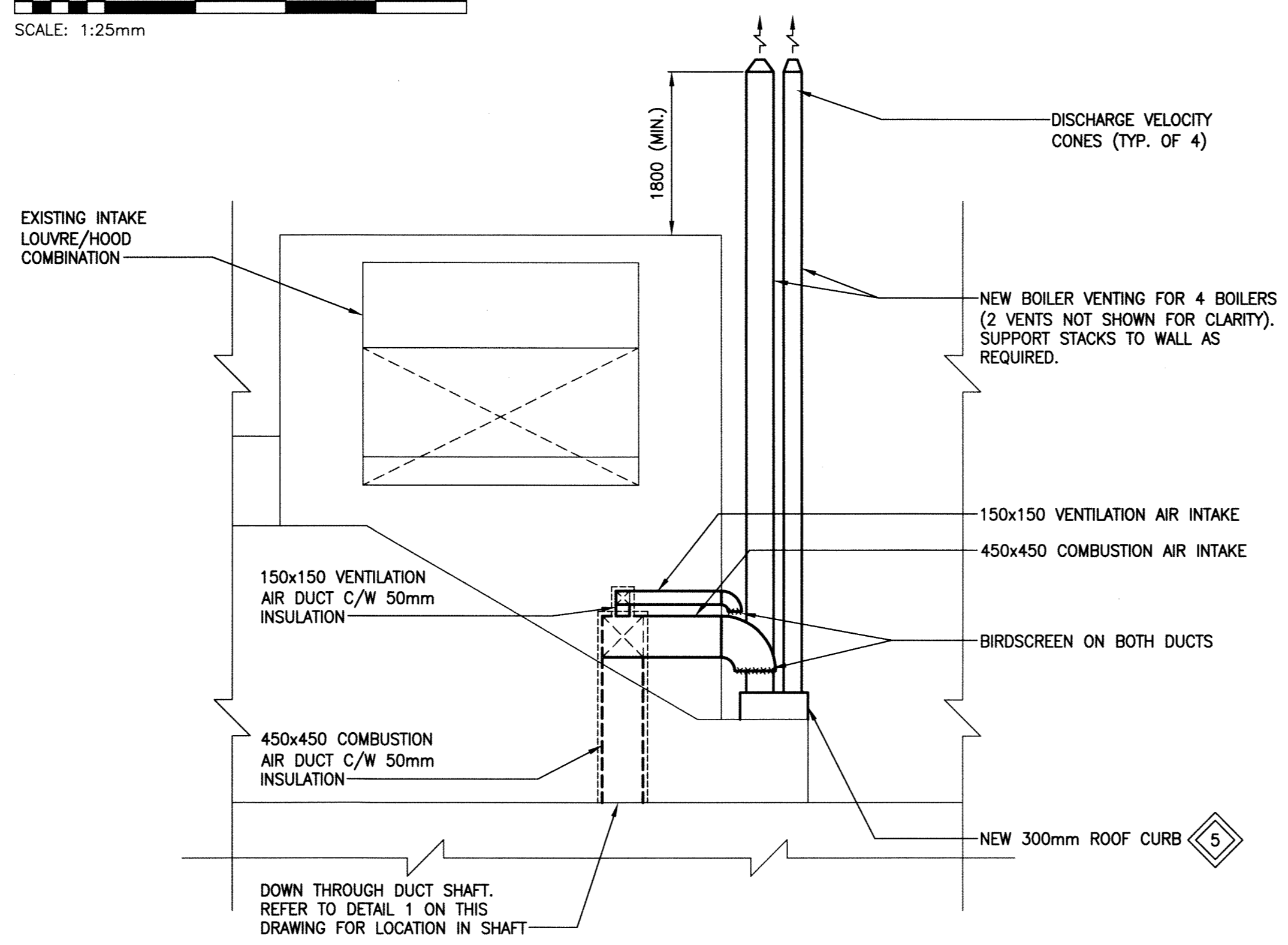
NOTE: ALL DUCTWORK IN THE DUCT SHAFT ROOM (ACCESSIBLE FROM THE BALCONY LEVEL) SHALL BE RE-INSULATED. CONTRACTOR TO PROVIDE UNIT PRICE TO REMOVE EXISTING INSULATION AND RE-INSULATE ALL DUCTWORK IN THE ROOM ACCORDING TO THE SPECIFICATIONS FOR EXPOSED OUTSIDE AIR DUCTWORK.

1 PARTIAL MAIN FLOOR PLAN - NEW  
SCALE: 1:25mm

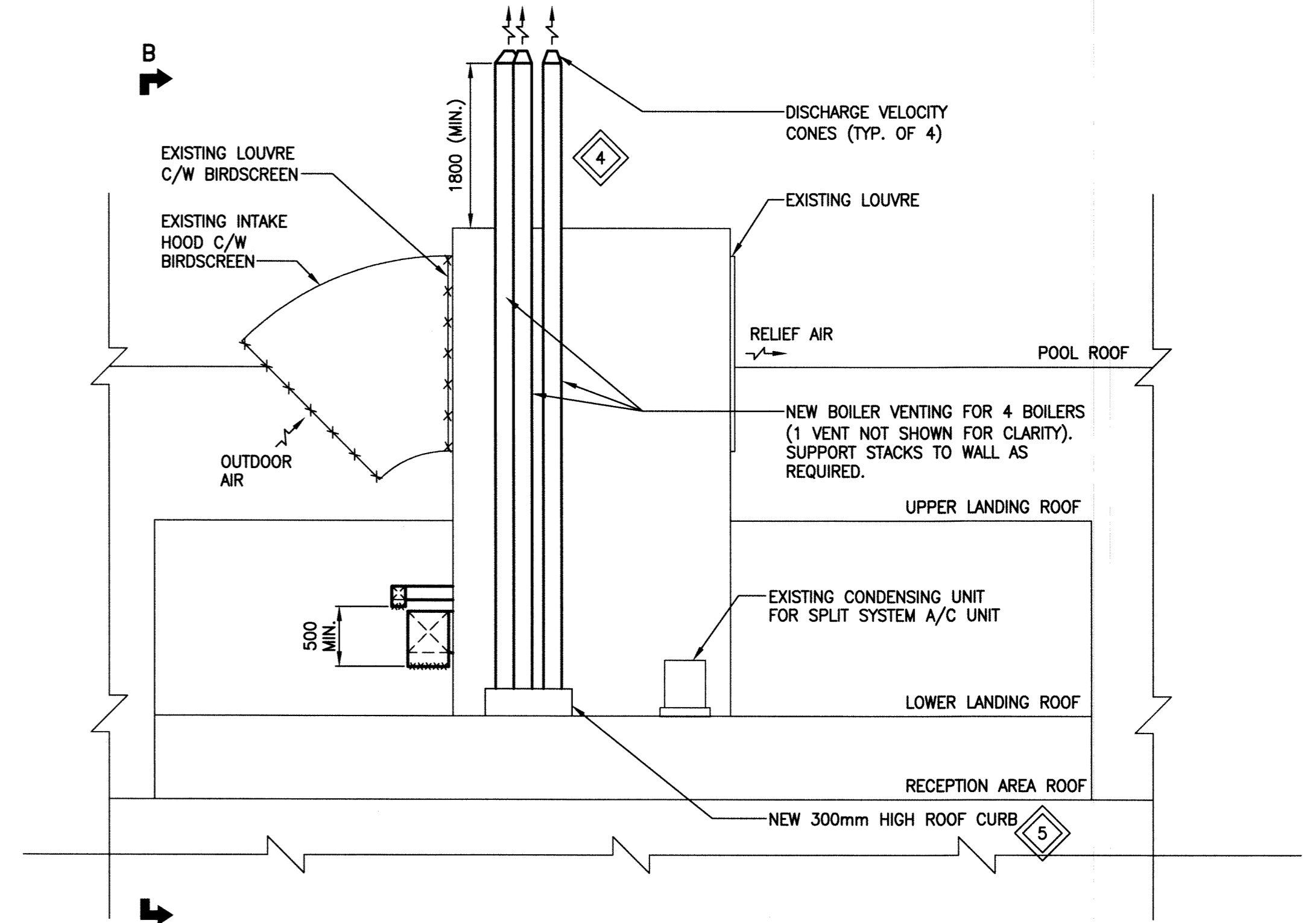
- GENERAL NOTES:**
- PERFORM WORK IN ACCORDANCE TO ALL APPLICABLE CODES AND REGULATIONS.
  - EQUIPMENT LOCATIONS, DUCT AND PIPE ROUTING INDICATED ON THE DRAWINGS IS APPROXIMATE ONLY. CONFIRM IN THE FIELD. REROUTE DUCTWORK AND PIPING AS REQUIRED TO ELIMINATE FIELD INTERFERENCES WITH BUILDING STRUCTURES, ELECTRICAL, ETC. CONFIRM CHANGES WITH CONSULTANT. CO-ORDINATE WORK WITH ALL SUBTRADES. WHERE DIMENSIONS ARE INDICATED FOR PIPING, DUCTWORK, DUCT SIZES, EQUIPMENT SIZES, ETC. THESE ARE FOR BIDDING PURPOSES ONLY. VERIFY ALL DIMENSIONS IN THE FIELD PRIOR TO ORDERING EQUIPMENT AND COMMENCING INSTALLATION WITHOUT EXTRA TO THE PROJECT. ENSURE ALL EQUIPMENT, DUCTWORK, AND PIPING FITS IN THE SPACE AVAILABLE AND TO MAINTAIN THE GENERAL DESIGN INTENT FOR THE SYSTEMS.

- KEYNOTES:**
- SUPPLY AND INSTALL NEW COMBUSTION AIR DUCT IN EXISTING DUCT SHAFT. DUCT TO BE INSULATED WITH 50mm (2") INSULATION. REFER TO SECTIONS A-A & B-B ON THIS DRAWING FOR TERMINATION DETAILS.
  - SUPPLY AND INSTALL NEW VENTILATION AIR DUCT ADJACENT TO COMBUSTION AIR DUCT. VENTILATION DUCT TO FOLLOW SAME PATH UP TO DUCT SHAFT ROOM. REFER TO SECTIONS A-A & B-B ON THIS DRAWING FOR TERMINATION DETAILS.
  - ROUTE NEW BOILER VENTING THROUGH EXISTING CHASE. VENTS TO CONTINUE UPWARD PAST NEAREST ROOF. REFER TO SECTIONS A-A & B-B ON THIS DRAWING.
  - NEW BOILER STACKS TO BE INSTALLED AS HIGH AS POSSIBLE WITHOUT NEEDING ADDITIONAL BRACING BEYOND ROOF LINE. COORDINATE WITH VENT SUPPLIER FOR MAXIMUM UNSUPPORTED HEIGHT.
  - SUPPLY AND INSTALL NEW ROOF CURB TO SUIT NEW BOILER STACKS. TIE INTO EXISTING ROOF ASSEMBLY AND PROVIDE WATER TIGHT SEAL.

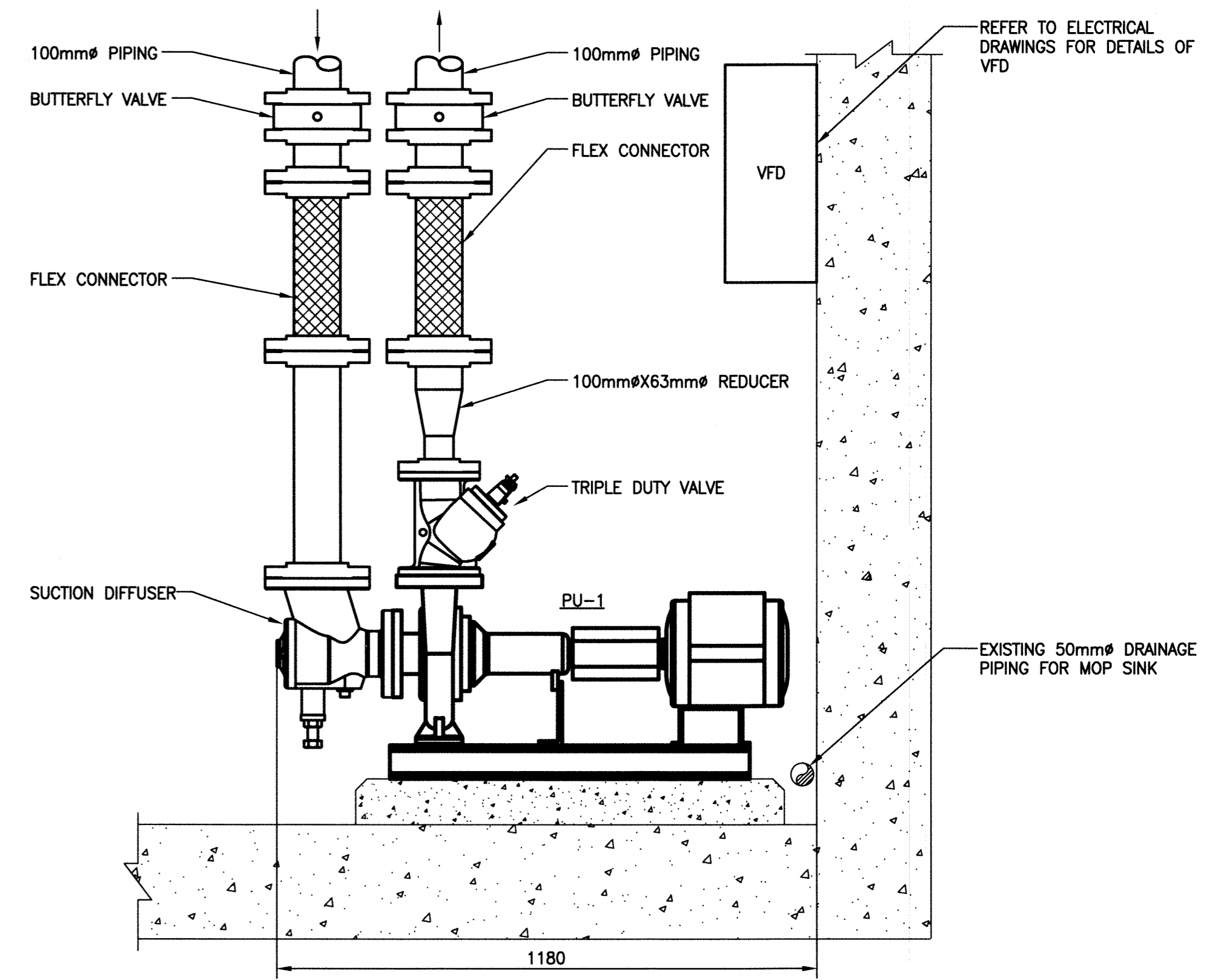
- LEGEND:**
- NEW PIPING/EQUIPMENT/DUCTWORK
  - EXISTING PIPING/EQUIPMENT/DUCTWORK
  - PU- PUMP
  - VFD VARIABLE FREQUENCY DRIVE



SECTION B-B - EAST FACE OF BLDG.  
SCALE: 1:50mm

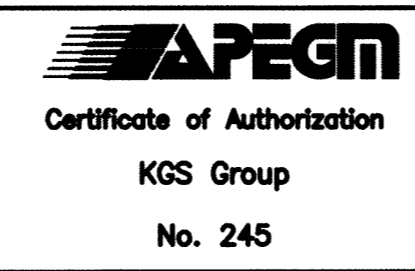


SECTION A-A - NORTH FACE OF BLDG.  
SCALE: 1:50mm



A ELEVATION OF PUMP (PU-1)  
SCALE: 1:10mm

SCALE VERIFIED BY: \_\_\_\_\_

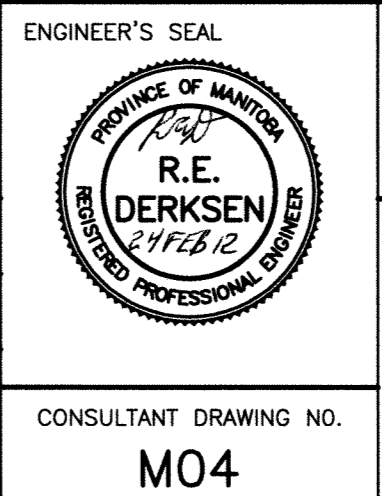


B.M. ELEV.	
DESIGNED BY	SHC
DRAWN BY	TJC
HOR. SCALE:	AS SHOWN
VERTICAL:	
ISSUED FOR TENDER	12/02/24
NO. REVISIONS	DATE BY

**KGS GROUP**  
CONSULTING ENGINEERS & PROJECT MANAGERS  
WINNIPEG (204) 896-1209  
THUNDER BAY (807) 345-2233

DESIGNED BY: SHC  
DRAWN BY: TJC  
HOR. SCALE: AS SHOWN  
VERTICAL: .

CHECKED BY: .  
APPROVED BY: .  
RELEASED FOR CONSTRUCTION: .



**THE CITY OF WINNIPEG**  
PLANNING, PROPERTY & DEVELOPMENT

PROJECT TITLE: ST. JAMES CENTENNIAL POOL  
644 PARKDALE STREET  
BID OPPORTUNITY: 45-2012  
UPGRADE HYDRONIC HEATING SYSTEM

PARTIAL MAIN FLOOR PLAN AND SECTIONS - NEW

SHEET OF: 004 OF 006  
COMPUTER FILE NAME: 11-0107-32-M04  
CITY DRAWING NUMBER

CONSULTANT DRAWING NO. M04