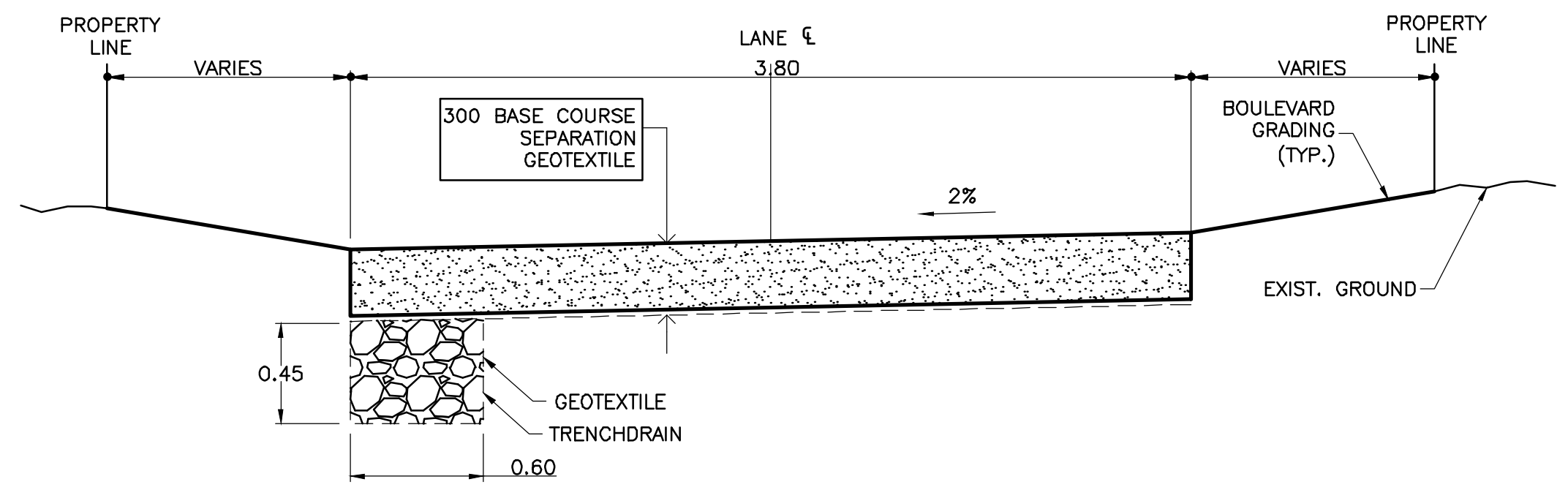
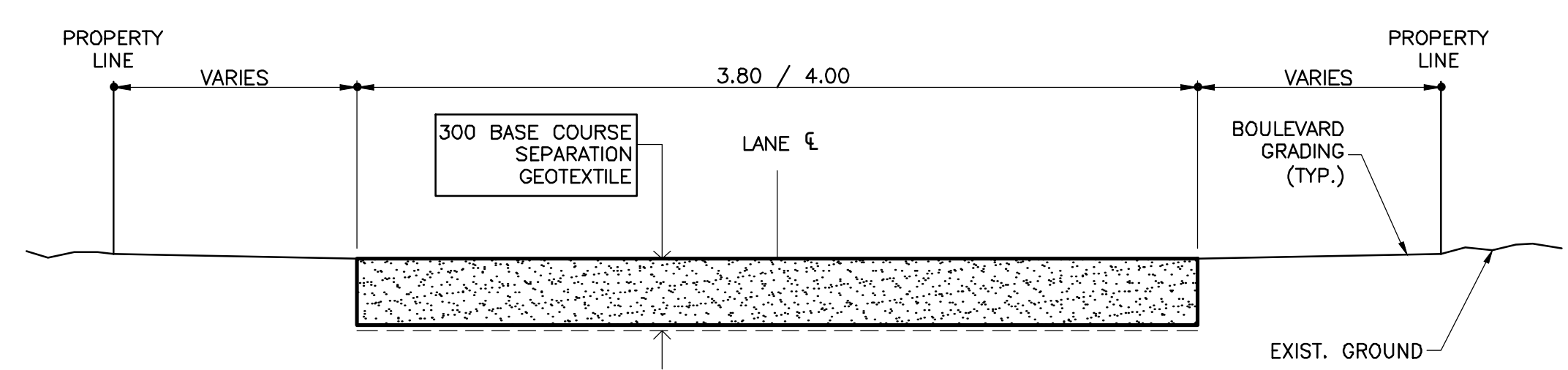


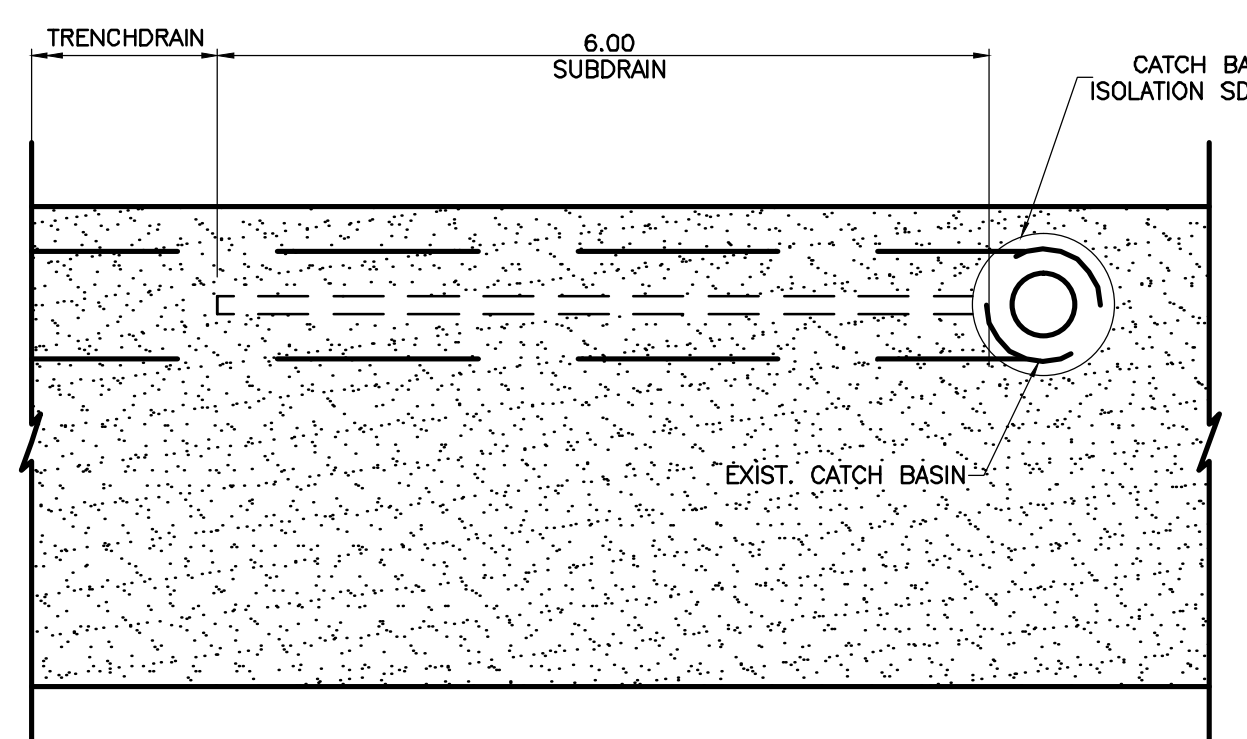
A LIMESTONE SECTION
N.T.S.



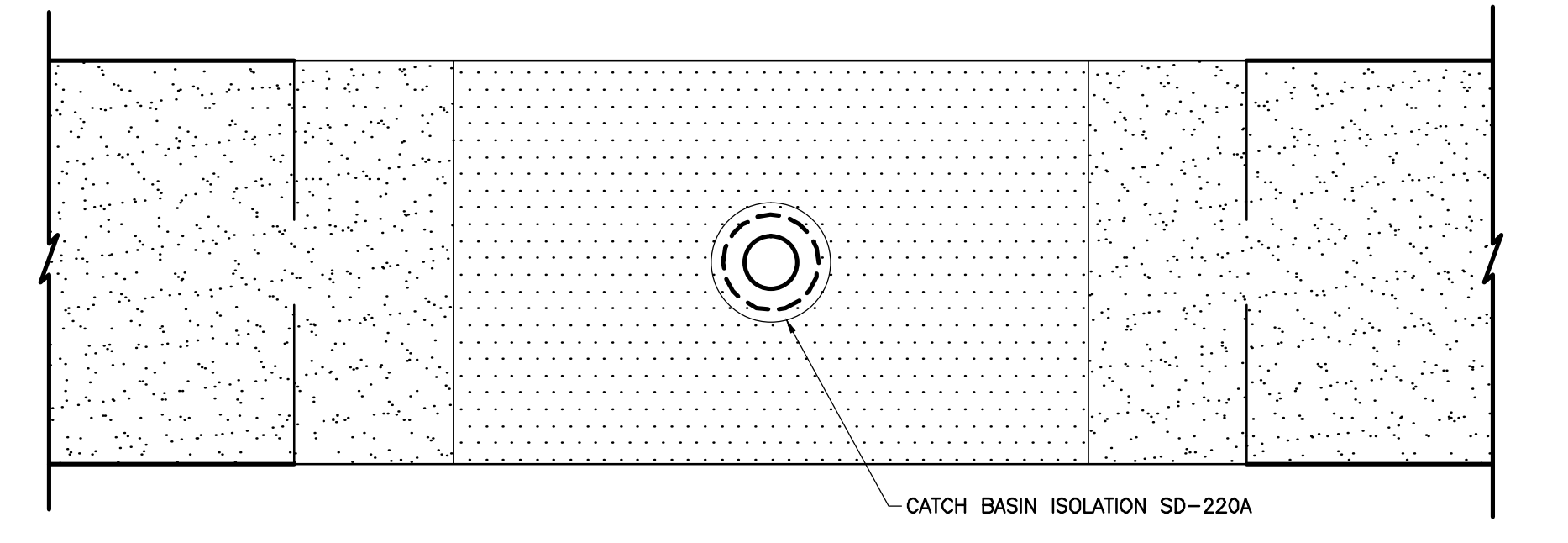
B LIMESTONE SECTION WITH TRENCH DRAIN
N.T.S.



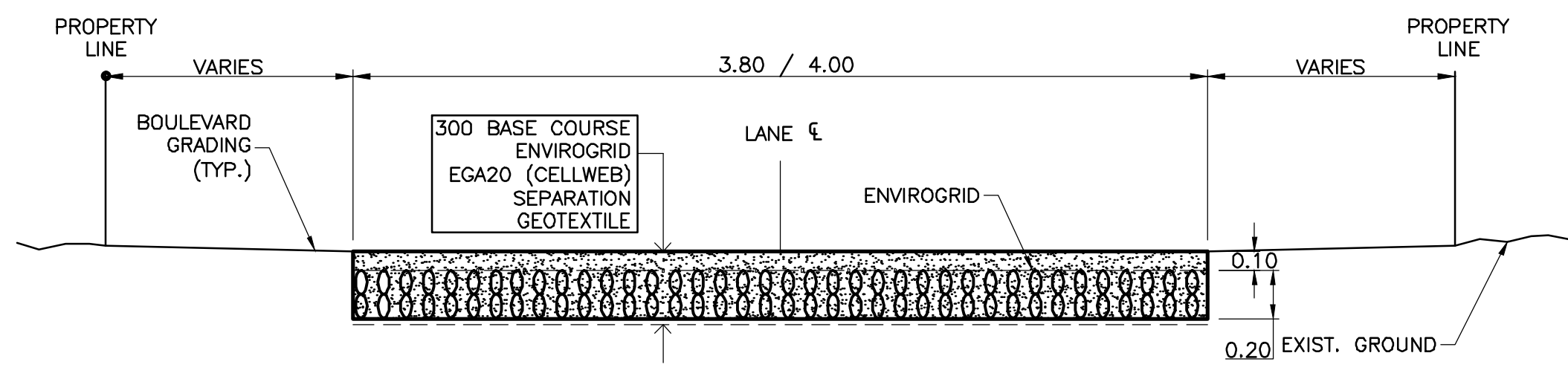
C TYPICAL LIMESTONE SECTION
N.T.S.



1 CATCH BASIN WITH SUBDRAIN
N.T.S.



2 CATCH BASIN APRON
N.T.S.



TYPICAL LIMESTONE SECTION WITH ENVIROGRID

CONSTRUCTION NOTES:

- LANES ARE TO BE GRADED AS DIRECTED BY THE CONTRACT ADMINISTRATOR
- CONFIRM LOCATION OF ALL EXISTING UTILITIES PRIOR TO CONSTRUCTION.
- NOTIFY ALL RESIDENTS AND BUSINESSES 24 HOURS IN ADVANCE OF ANY DISRUPTION OF UTILITY SERVICE.
- ENSURE ALL THE UPPER EDGES OF THE GEOTEXTILE AND ENVIROGRID HAVE A MINIMUM OF 100mm BURIED DEPTH OVER ALL PORTIONS.
- CONTRACTOR TO TAKE PRECAUTIONARY STEPS TO AVOID DAMAGE FROM CONSTRUCTION ACTIVITIES TO TREES
- LOCATION OF EXISTING SERVICES AND UTILITIES TO BE CONFIRMED IN THE FIELD BY THE CONTRACTOR



METRIC
WHOLE NUMBERS INDICATE MILLIMETRES
DECIMALIZED NUMBERS INDICATE METRES

"Description of property limits, and existing and/or proposed features relative to these limits as shown on this drawing do not represent a Legal Survey. GENVAR makes no representation or guarantee that the property limit information is accurate. GENVAR accepts no responsibility for damages, if any, suffered by any third party as a result of decisions made or actions based on this drawing."

| | | | | | | | | | | |
|-----------|---------------|---------------------|---------------------|-------------------|---------------------|---------------------|------------------|---------------|------------|--------------------|
| WATERMAIN | HYDRANT | VALVE | LAND DRAINAGE SEWER | WASTE WATER SEWER | C.B. LEAD | MANHOLE | CATCH BASIN | CURB INLET | CULVERT | GAS |
| HYDRO | M.T.S. | TRAFFIC SIGNAL | CONCRETE/ASPHALT | RECYCLED CONCRETE | GRAVEL | SIDEWALK | CURB RAMP | PROPERTY LINE | ELEVATIONS | TEST HOLE LOCATION |
| WATERMAIN | VALVE | LAND DRAINAGE SEWER | WASTE WATER SEWER | CENTERLINE | SOUTH & EAST GUTTER | NORTH & WEST GUTTER | | | | |
| EXISTING | LEGEND - PLAN | PROPOSED | EXISTING | LEGEND - PLAN | PROPOSED | EXISTING | LEGEND - PROFILE | PROPOSED | | |

LOCATION APPROVED UNDERGROUND STRUCTURES

SUPV. U/G STRUCTURES DATE COMMITTEE

NOTE:
LOCATION OF UNDERGROUND STRUCTURES AS SHOWN ARE BASED ON THE BEST INFORMATION AVAILABLE BUT NO GUARANTEE IS GIVEN THAT ALL EXISTING UTILITIES ARE SHOWN OR THAT THE GIVEN LOCATIONS ARE EXACT. CONFIRMATION OF EXISTENCE AND EXACT LOCATION OF ALL SERVICES MUST BE OBTAINED FROM THE INDIVIDUAL UTILITIES BEFORE PROCEEDING WITH CONSTRUCTION.

| | | | |
|------------|-------------------|---------|------|
| B.M. ELEV. | | | |
| NO. | REVISIONS | DATE | BY |
| 1 | REVIEW SUBMISSION | 10.6.12 | P.R. |

GENIVAR
10 PRAIRIE WAY WINNIPEG, MANITOBA R2J 3J8
PH: (204)-233-2113 FAX: (204)-233-2080

DESIGNED BY: R.H./P.R. CHECKED BY: S.M.
DRAWN BY: P.R. APPROVED BY: I.McK.
HOR. SCALE: 1:750
VERT. SCALE: -
DATE: JUNE 2012

ENGINEERS SEAL

CONSULTANT DRAWING NO.
121-19316-00-01

THE CITY OF WINNIPEG
PUBLIC WORKS DEPARTMENT

2012 GRANULAR LANE IMPROVEMENT PROGRAM
ROSEWARNE AVE / ELM PARK RD LANE
FROM KINGSTON RD TO ST. MARY'S ROAD
GRANULAR LANE

CITY DRAWING NO.
SHEET 1 OF 13
470-2012-01