

- CONSTRUCTION NOTES:**
- LANES ARE TO BE GRADED AS DIRECTED BY THE CONTRACT ADMINISTRATOR
  - CONFIRM LOCATION OF ALL EXISTING UTILITIES PRIOR TO CONSTRUCTION.
  - NOTIFY ALL RESIDENTS AND BUSINESSES 24 HOURS IN ADVANCE OF ANY DISRUPTION OF UTILITY SERVICE.
  - ENSURE ALL THE UPPER EDGES OF THE GEOTEXTILE AND ENVIROGRID HAVE A MINIMUM OF 100mm BURIED DEPTH OVER ALL PORTIONS.
  - CONTRACTOR TO TAKE PRECAUTIONARY STEPS TO AVOID DAMAGE FROM CONSTRUCTION ACTIVITIES TO TREES
  - LOCATION OF EXISTING SERVICES AND UTILITIES TO BE CONFIRMED IN THE FIELD BY THE CONTRACTOR

METRIC  
WHOLE NUMBERS INDICATE MILLIMETRES  
DECIMALIZED NUMBERS INDICATE METRES

"Description of property limits, and existing and/or proposed features relative to these limits as shown on this drawing do not represent a Legal Survey. GENIVAR makes no representation or guarantee that the property limit information is accurate. GENIVAR accepts no responsibility for damages, if any, suffered by any third party as a result of decisions made or actions based on this drawing."

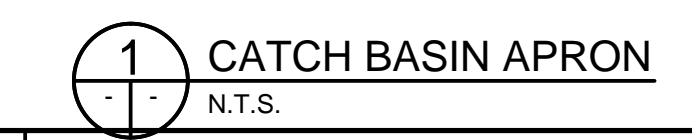
WATERMAIN	HYDRANT	VALVE	LAND DRAINAGE SEWER	WASTE WATER SEWER	C.B. LEAD	MANHOLE	CATCH BASIN	CURB INLET	CULVERT	GAS	EXISTING	LEGEND - PLAN	PROPOSED	HYDRO	M.T.S.	TRAFFIC SIGNAL	CONCRETE/ASPHALT	RECYCLED CONCRETE	GRAVEL	SIDEWALK	CURB RAMP	PROPERTY LINE	ELEVATIONS	(32.00)	TEST HOLE LOCATION	TH#	EXISTING	LEGEND - PLAN	PROPOSED	WATERMAIN	VALVE	LAND DRAINAGE SEWER	WASTE WATER SEWER	CENTERLINE	SOUTH & EAST GUTTER	NORTH & WEST GUTTER	EXISTING	LEGEND - PROFILE	PROPOSED
-----------	---------	-------	---------------------	-------------------	-----------	---------	-------------	------------	---------	-----	----------	---------------	----------	-------	--------	----------------	------------------	-------------------	--------	----------	-----------	---------------	------------	---------	--------------------	-----	----------	---------------	----------	-----------	-------	---------------------	-------------------	------------	---------------------	---------------------	----------	------------------	----------

LOCATION APPROVED UNDERGROUND STRUCTURES

SUPV. U/G STRUCTURES DATE COMMITTEE

NOTE:  
LOCATION OF UNDERGROUND STRUCTURES AS SHOWN ARE BASED ON THE BEST INFORMATION AVAILABLE BUT NO GUARANTEE IS GIVEN THAT ALL EXISTING UTILITIES ARE SHOWN OR THAT THE GIVEN LOCATIONS ARE EXACT. CONFIRMATION OF EXISTENCE AND EXACT LOCATION OF ALL SERVICES MUST BE OBTAINED FROM THE INDIVIDUAL UTILITIES BEFORE PROCEEDING WITH CONSTRUCTION.

B.M. ELEV.					
NO.	REVISIONS	DATE	BY		
1	REVIEW SUBMISSION	10.6.12	P.R.		



**GENIVAR**  
10 PRAIRIE WAY WINNIPEG, MANITOBA R2J 3J8  
PH: (204)-233-2113 FAX: (204)-233-2080

DESIGNED BY: R.H./P.R. CHECKED BY: S.M.  
DRAWN BY: P.R. APPROVED BY: I.McK.  
HOR. SCALE: 1:600  
VERT. SCALE: --  
DATE: JUNE 2012

ENGINEERS SEAL

CONSULTANT DRAWING NO. 121-19316-00-13

**THE CITY OF WINNIPEG**  
PUBLIC WORKS DEPARTMENT

2012 GRANULAR LANE IMPROVEMENT PROGRAM  
HARRIS BLVD / OAKDEAN BLVD LANE  
FROM EMO AVENUE TO ASSINIBOINE AVENUE  
GRANULAR LANE

CITY DRAWING NO. SHEET 13 of 13  
470-2012-13

