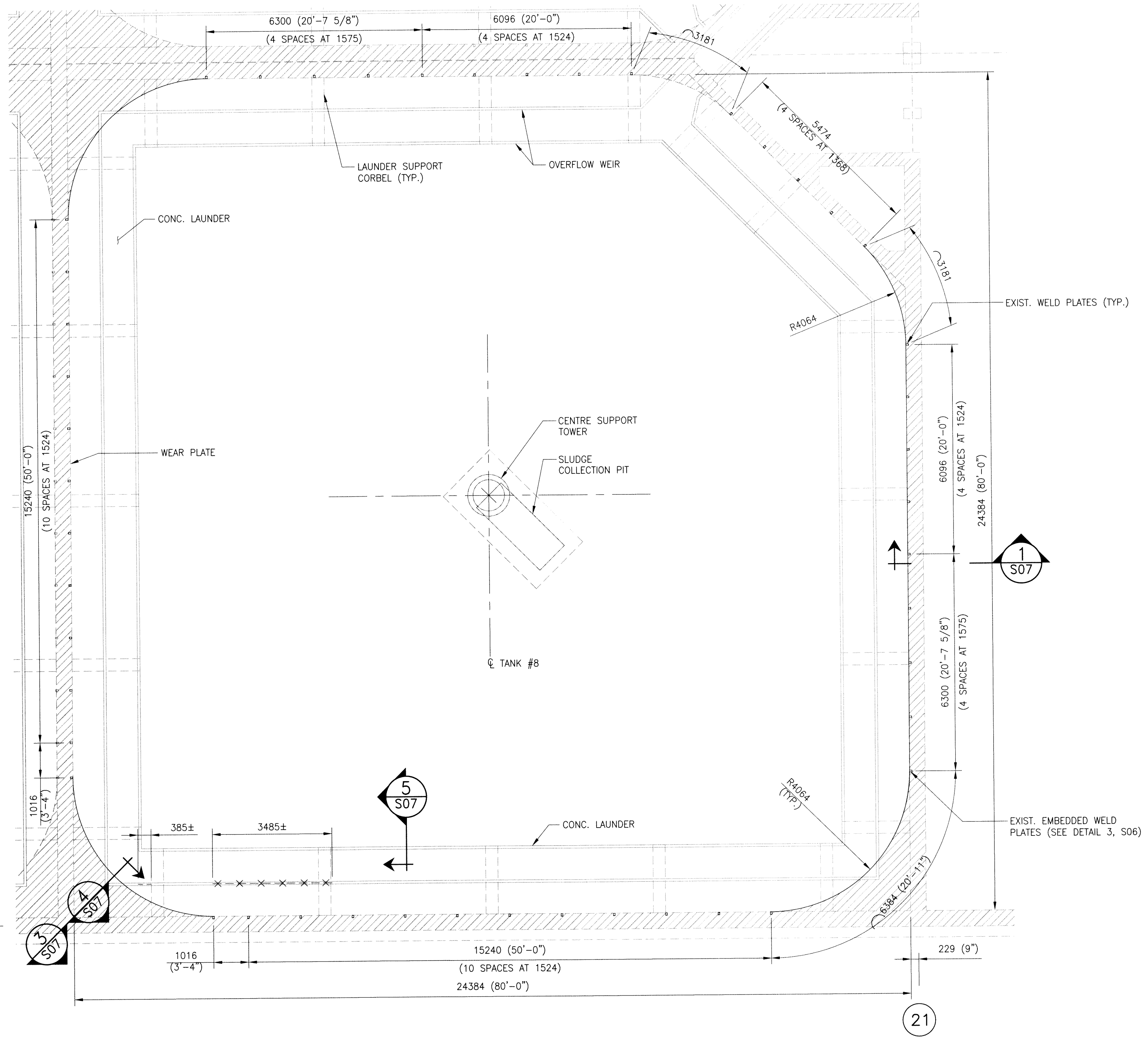


V
Va

W



LEGEND:

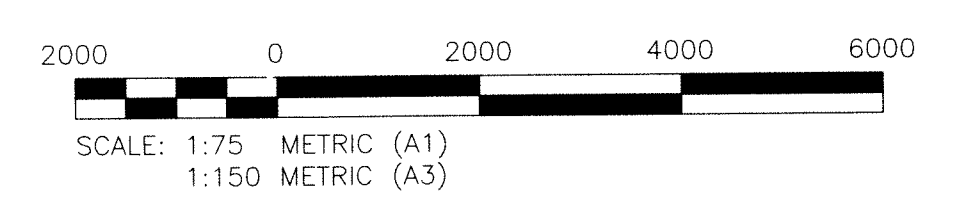
WEAR PLATE:
 — : REMOVE & REPLACE WEAR PLATE.

OVERFLOW WEIR PLATE:
 - - - - : REMOVE, CLEAN, & REFASTEN WEIR PLATE.
 X - X - X : REMOVE, REPLACE & REFASTEN WEIR PLATE.

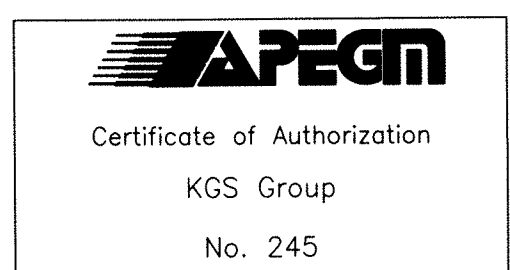
SCOPE OF WORK – SECONDARY CLARIFIER #8

ITEM	REF. DETAILS
1. REPLACE SECTIONS OF WEAR PLATE.	1,2,3,4 (DWG. S07)
2. COAT NEW & RECOAT EXIST. WEAR PLATE.	SEE NOTE 2.5 (DWG. S02)
3. REMOVE, REPLACE & REFASTEN SECTION OF OVERFLOW WEIR PLATE.	6,7 (DWG. S07)
4. INSTALL NEW FASTENERS TO OVERFLOW WEIR PLATE (ENTIRE PERIMETER).	5,6,7 (DWG. S07)
5. APPLY WATERPROOFING MEMBRANE TO WEIR PLATE.	5 (DWG. S07)
6. REPLACE PIVOT SUPPORT MEMBERS & COMPLETE COATING SPOT REPAIRS TO FIXED PORTION OF SLUDGE COLLECTOR.	SEE DWG. S08, S09
7. MODIFY SCUM COLLECTOR SUPPORT STEEL.	SEE DWG. S09
8. REPLACE CORNER SWEEP ASSEMBLY.	SEE DWG. S08, S09
9. REPLACE COUNTERWEIGHT ASSEMBLY.	SEE DWG. S10
10. REPLACE SLUDGE COLLECTOR TENSION ROD.	SEE DWG. S09

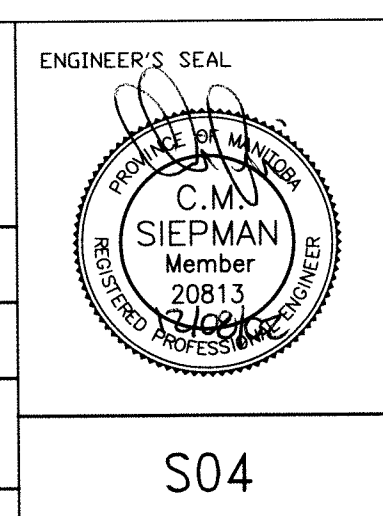
- NOTES:**
- WORK THIS DRAWING IN COMBINATION WITH THE PROJECT SPECIFICATIONS.
 - REFER TO DWG. S02 FOR GENERAL NOTES.
 - REPAIR LOCATIONS, DIMENSIONS AND QUANTITIES ARE APPROXIMATE AND ARE TO BE FIELD CONFIRMED BY THE CONTRACTOR AND APPROVED BY THE CONTRACT ADMINISTRATOR.



B
S01 PLAN – SECONDARY CLARIFIER 8
SCALE: 1:75



FIELD BOOK #		KGS GROUP CONSULTING ENGINEERS		ENGINEER'S SEAL	
POSTED TO LBIS		DESIGNED BY	KRD	CHECKED BY	CMS
		DRAWN BY	FBV	APPROVED BY	
		HDR. SCALE	AS NOTED	RELEASED FOR CONSTRUCTION	
		VERTICAL	AS NOTED		
0	ISSUED FOR CONSTRUCTION	2/08/08	CMS	DATE	2011 07 15
NO.	REVISIONS	DATE	BY	DATE	



THE CITY OF WINNIPEG
WATER AND WASTE DEPARTMENT

NEWPCC
SECONDARY CLARIFIERS 7 TO 10 REHABILITATION
SECONDARY CLARIFIER 8
PLAN

SHEET 4 OF 10
CITY DRAWING NUMBER
1-0101S-S0004-001