

A1 SIZE - 594mm x 841mm

FROM XFMR-M1  
(SEE DRAWING 1-0630M-E0002)

ARC FLASH VALUES ARE  
PRELIMINARY AND WILL BE  
FINALIZED DURING CONSTRUCTION.

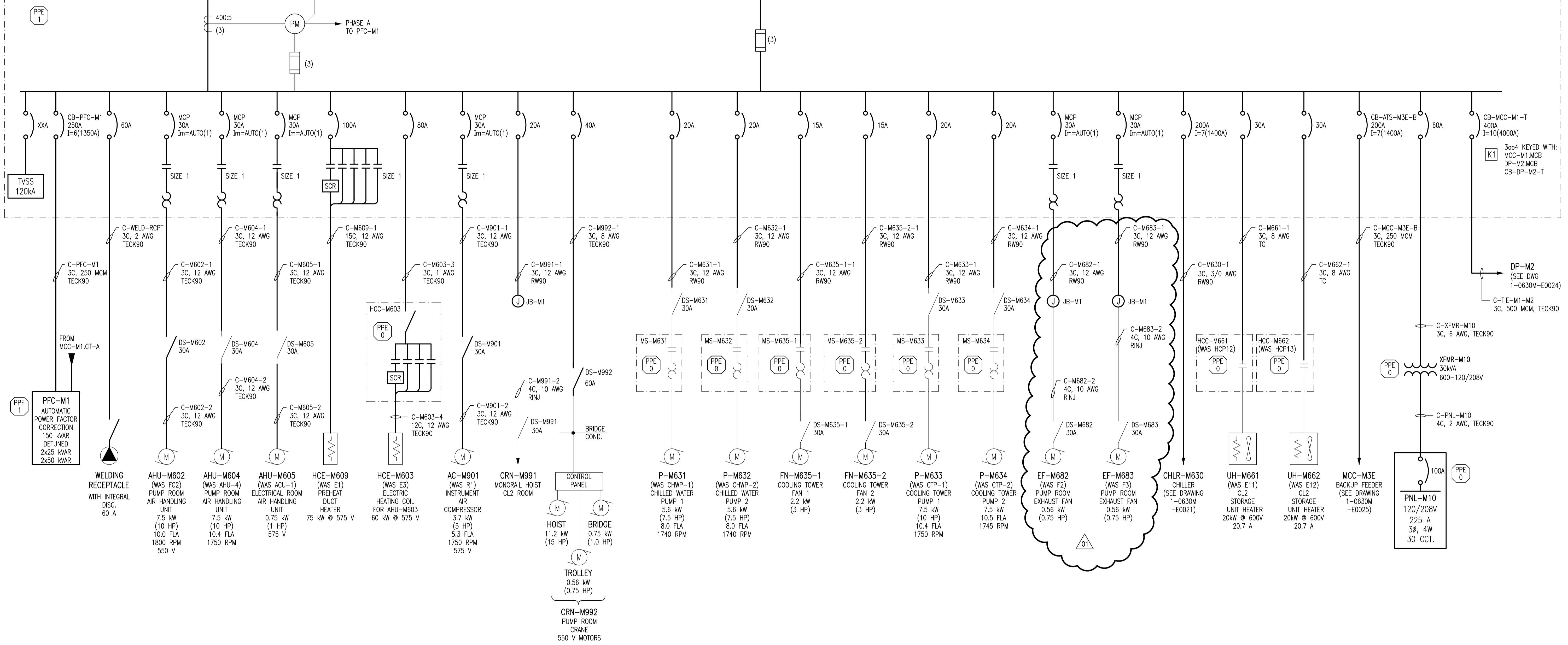
LEGEND:

- EXISTING
- NEW WORK
- FUTURE

MCC-M1 (NON-ESSENTIAL)  
600V, 3Ø, 3W  
600A  
42kA BUS BRACING  
INT. RATING: 18kA MINIMUM

3Ø/4 KEYPED WITH:  
DP-M2.MCB  
CB-MCC-M1-T  
CB-DP-M2-T

MCC-M1.MCB  
350AT  
400AF  
LSI



LAST SAVE: 2012/08/16 - 4:01pm  
PATH: M:\508955\AENG\47ELE\DD - General DWG\1-0630M-E0023-001-01.dwg

1-0630M-E0028	MCC SCHEDULES
1-0630M-E0026	MCC ELEVATION AND DETAILS
1-0630M-E0004	SINGLE LINE DIAGRAM, DP-M2
1-0630M-E0001	ELECTRICAL SINGLE LINE DIAGRAM LEGEND AND DETAILS
DRAWING NUMBER	REFERENCE DRAWINGS



NO.	REVISIONS	DATE	DESIGN	CHECK
01	ADDENDUM 1, BID OPP. 490-2012	2012/08/14	BJC	CJR
00	ISSUED FOR TENDER, BID OPP. 490-2012	2012/07/23	BJC	CJR

**SNC-Lavalin Inc.**  
148 Nature Park Way  
Winnipeg, MB, Canada R3P 0X7  
204-786-8080

DESIGNED BY: B. CLEVEN  
DRAWN BY: S. FUNK  
SCALE: NTS  
DATE: 2011/01/25  
CONSULTANT NO.: 508955-0000-47DD-0023

CHECKED BY: C. REIMER  
APPROVED BY: C. REIMER  
RELEASED FOR CONSTRUCTION BY:  
DATE:

ENGINEER'S SEAL

**PRELIMINARY**  
NOT TO BE  
USED FOR  
CONSTRUCTION

**THE CITY OF WINNIPEG**  
WATER AND WASTE DEPARTMENT

MACLEAN WATER PUMPING STATION

ELECTRICAL SINGLE LINE DIAGRAM  
MCC-M1

CITY DRAWING NUMBER: 1-0630M-E0023  
SHEET: 001  
REV: 01  
SIZE: A1