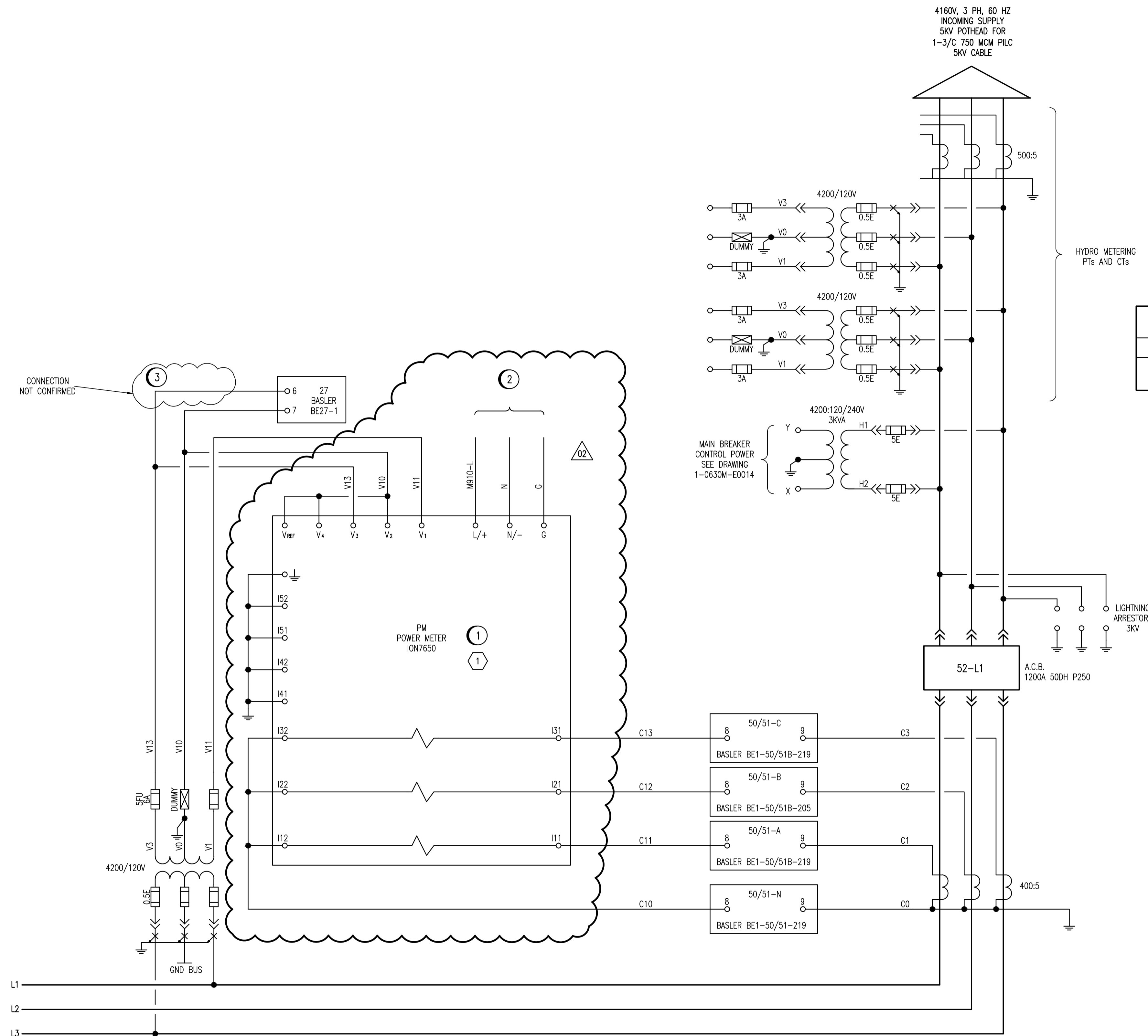


CONSTRUCTION NOTES:

- 1 REPLACE EXISTING IQ DP-4000 MULTIFUNCTION POWER METER WITH SCHNEIDER ELECTRIC ION7650. REFER TO EQUIPMENT SCHEDULE FOR COMPLETE PART NUMBER.
- 2 PROVIDE UPS POWER TO ION7650 METER FROM PNL-M32U (WAS PNL-E) VIA JB-M32U-1. PROVIDE AND INSTALL NEW 15A BRANCH CIRCUIT BREAKER INTO PNL-M32U, CIRCUIT 28.
- 3 CONFIRM WIRING TO EXISTING BASLER BE27-1 UNDERVOLTAGE RELAY AND PROVIDE AS-BUILT DRAWING MARKUPS TO CONTRACT ADMINISTRATOR.

EQUIPMENT SCHEDULE				
ITEM	QTY	DESCRIPTION	MFG	MODEL
1	1	POWER METER ION7650	SCHNEIDER ELECTRIC	M7650-A0-C0-B-6-E0-A-0-A



NOTES:

1. THIS DRAWING SUPERCEDES PART OF THE ORIGINAL WESTINGHOUSE SHOP DRAWING 739D778.
2. THIS DRAWING IS BASED ON THE ORIGINAL SHOP DRAWING AND VISUAL INSPECTION. ALL EXISTING WIRING HAS NOT BEEN FIELD VERIFIED. DESIGN RESPONSIBILITY IS LIMITED TO THE MODIFICATIONS SHOWN.



NO.	REVISIONS	DATE	DESIGN	CHECK
02	ISSUED FOR TENDER, BID OPP. 490-2012	2012/07/23	BJC	CJR
01	AS-BUILT - MODIFIED PROTECTION RELAYS	2012/01/10	-	BJC
00	ISSUED FOR TENDER	2009/08/17	BDK	CJR

SNC-LAVALIN INC.
 148 Nature Park Way
 Winnipeg, MB, Canada R3P 0X7
 204-786-8080

DESIGNED BY: B. KING
 CHECKED BY: C. REIMER
 DRAWN BY: B. KING
 APPROVED BY: C. REIMER
 SCALE: NTS
 RELEASED FOR CONSTRUCTION BY: [Signature]
 DATE: 2009/08/17
 CONSULTANT NO.: 508955-0000-47DD-0015

ENGINEER'S SEAL
PRELIMINARY
 NOT TO BE
 USED FOR
 CONSTRUCTION

THE CITY OF WINNIPEG
 WATER AND WASTE DEPARTMENT

MACLEAN WATER PUMPING STATION

THREE LINE DIAGRAM
 4160V MAIN BREAKER

CITY DRAWING NUMBER	SHEET	REV.	SIZE
1-0630M-E0015	001	02	A1

D-2488	LOOP DIAGRAM - 4160V POWER FAILURE
1-0630M-E0001	ELECTRICAL SINGLE LINE DIAGRAM LEGEND AND DETAILS
DRAWING NUMBER	REFERENCE DRAWINGS