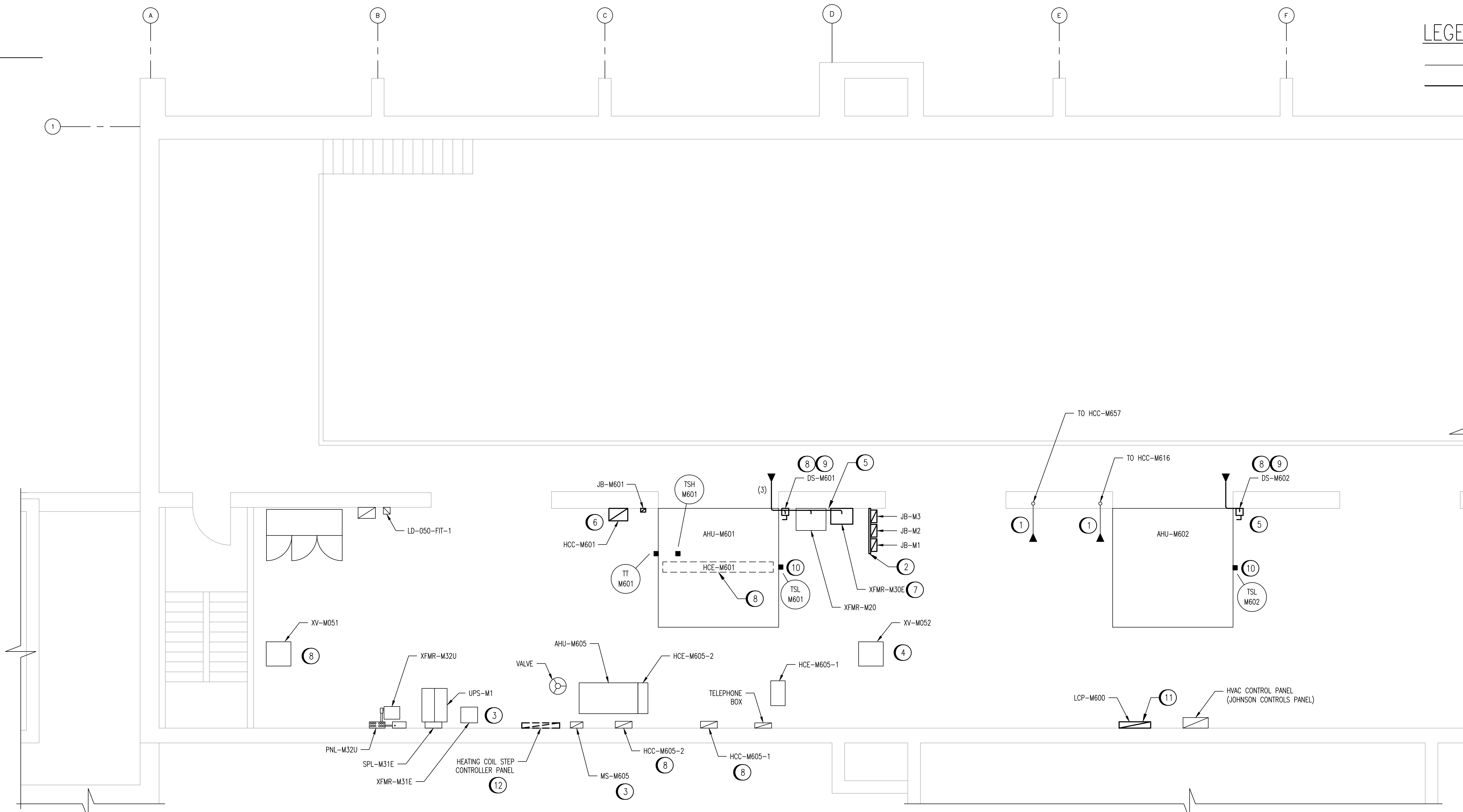


LEGEND:  
— EXISTING  
— NEW WORK



MEZZANINE FLOOR - ELEV. 228.600  
SCALE: 1 : 50

SPECIFIC NOTES:

- ① REWIRE UTILIZING NEW TRAY CABLE LOCATED IN EXISTING TRAY.
- ② PROVIDE UNISTRUT SUPPORT FRAME TO FACILATE MOUNTING OF JB-M1, JB-M2 AND JB-M3 AS SHOWN.
- ③ RE-UTILIZE EXISTING CONDUIT. CONDUIT MAY NEED TO BE EXTENDED.
- ④ PROVIDE 12 GA 41x41 UNISTRUT CHANNEL FROM THE FLOOR TO CEILING TO SUPPORT THE NEW TECK CABLE. SURFACE MOUNT ON UNISTRUT SUPPORTS TO THE CABLE TRAY.
- ⑤ DEMOLISH STOP BUTTON AND ASSOCIATED CABLING.
- ⑥ WIRE UTILIZING TECK CABLE TO EXISTING CABLE TRAY. PROVIDE 12 GA 41x41 UNISTRUT CHANNELS FOR SUPPORT OF CABLING.
- ⑦ INSTALL NEW CITY SUPPLIED TRANSFORMER, XFMR-M30E. WIRE UTILIZING CONDUIT AND TECK CABLE TO NEW TRAY.
- ⑧ ROUTE NEW TECK CABLE VIA SURFACE MOUNTED UNISTRUT TO CABLE TRAY.
- ⑨ SUPPLY AND INSTALL A NEW DISCONNECT SWITCH.
- ⑩ WIRE FREEZESTAT TO MCC CONTROL.
- ⑪ DEMOLISH EXISTING HAND-OFF-AUTO SWITCHES AND REPLACE WITH LCP-M600.
- ⑫ DEMOLISH EXISTING HEATING COIL STEP CONTROLLER PANEL.

LAST SAVE: 2012/07/26 - 4:01pm  
PATH: M:\508955\ENGS\47ELE\DD - General DWG\1-0630M-E0031-001-00.dwg

1-0630M-E0029	PANEL SCHEDULE AND DETAILS, DP-M2
1-0630M-E0028	MCC SCHEDULES, MCC-M1 AND MCC-M3E
DRAWING NUMBER	REFERENCE DRAWINGS



NO.	REVISIONS	DATE	DESIGN	CHECK
00	ISSUED FOR TENDER, BID OPP: 490-2012	2012/07/23	VE	CJR

**SNC-LAVALIN INC.**  
148 Nature Park Way  
Winnipeg, MB, Canada R3P 0X7  
204-798-8080

DESIGNED BY: V. ELIMBAN  
DRAWN BY: M.J. PERSSON  
SCALE: 1:50  
DATE: 2012/01/27

CHECKED BY: C. REIMER  
APPROVED BY: C. REIMER  
RELEASED FOR CONSTRUCTION BY:  
DATE:

CONSULTANT NO.: 508955-0000-47DD-XXXX

ENGINEER'S SEAL  
**PRELIMINARY**  
NOT TO BE  
USED FOR  
CONSTRUCTION

**THE CITY OF WINNIPEG**  
WATER AND WASTE DEPARTMENT

MACLEAN WATER PUMPING STATION

ELECTRICAL EQUIPMENT PLAN  
MEZZANINE LEVEL

CITY DRAWING NUMBER: 1-0630M-E0031

SHEET: 001  
REV: 00  
SIZE: A1

CONTINUED ON DRAWING 1-0630M-E0031-002