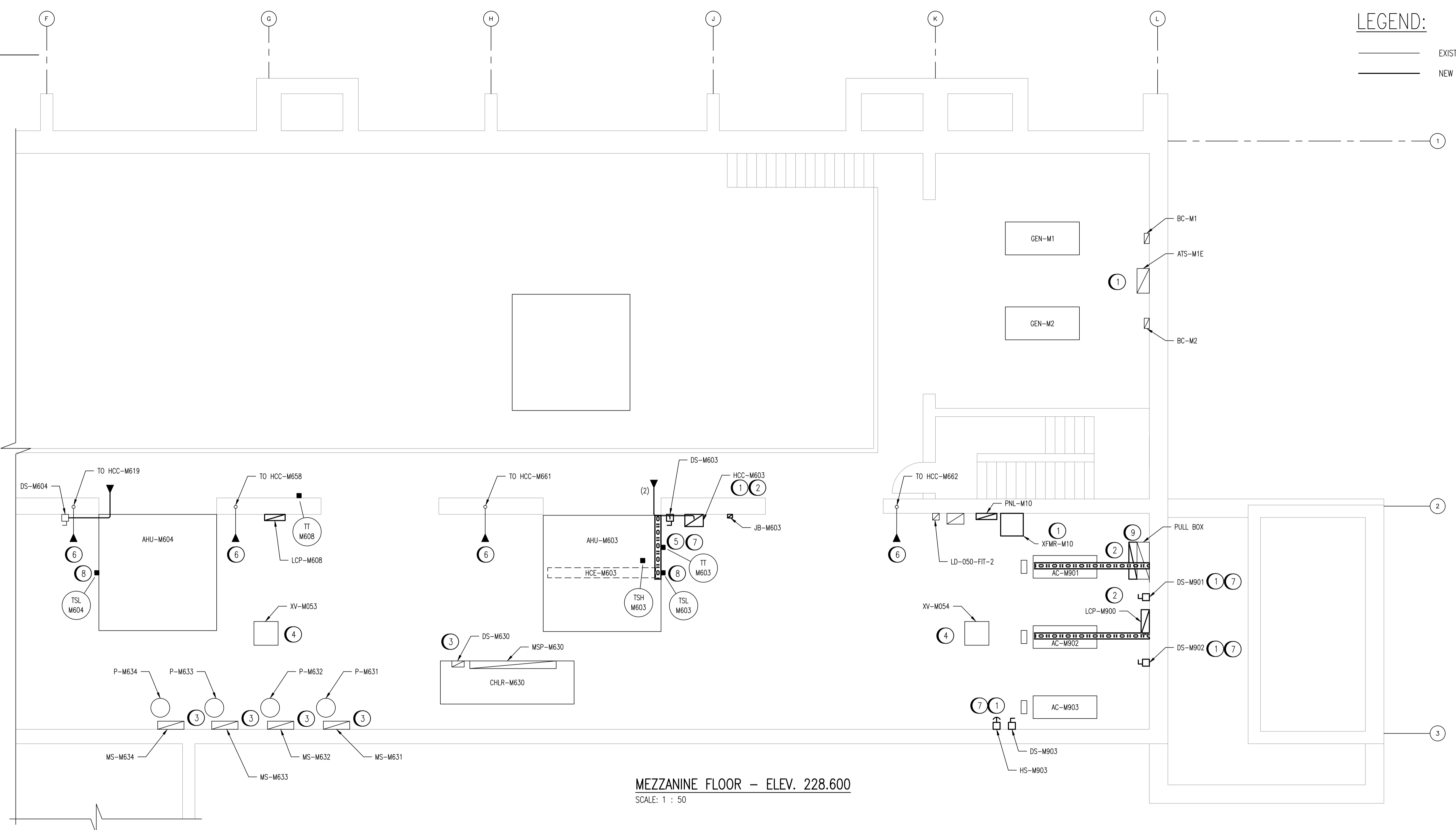


**LEGEND:**  
— EXISTING  
— NEW WORK

CONTINUED ON DRAWING 1-0630M-E0031-001

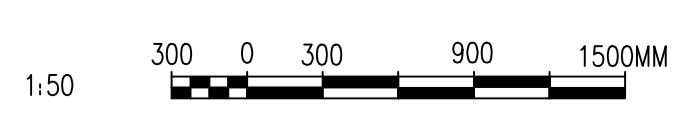


**MEZZANINE FLOOR - ELEV. 228.600**  
SCALE: 1 : 50

**SPECIFIC NOTES:**

- ① SURFACE MOUNT NEW CABLES TO NEW CABLE TRAY.
- ② PROVIDE CABLE CHANNEL TO SUPPORT CABLE(S).
- ③ RE-UTILIZE EXISTING CONDUIT. CONDUIT MAY NEED TO BE EXTENDED.
- ④ PROVIDE 12 GA 41x41 UNISTRUT CHANNEL FROM THE FLOOR TO CEILING TO SUPPORT THE NEW TECK CABLE. SURFACE MOUNT ON UNISTRUT SUPPORTS TO THE NEW CABLE TRAY.
- ⑤ DEMOLISH STOP PUSHBUTTON AND ASSOCIATED CABLING.
- ⑥ REWIRE UTILIZING NEW TRAY CABLE LOCATED IN EXISTING TRAY.
- ⑦ SUPPLY AND INSTALL NEW DISCONNECT SWITCH.
- ⑧ WIRE FREEZESTAT TO MCC CONTROL.
- ⑨ PROVIDE 200mm BOX EXTENSION TO THE EXISTING PULL BOX. PROVIDE ANGLE SUPPORTS BENEATH BOX AS REQUIRED.

|                |                                   |
|----------------|-----------------------------------|
| 1-0630M-E0029  | PANEL SCHEDULE AND DETAILS, DP-M2 |
| 1-0630M-E0028  | MCC SCHEDULES, MCC-M1 AND MCC-M3E |
| DRAWING NUMBER | REFERENCE DRAWINGS                |



| NO. | REVISIONS                            | DATE       | DESIGN | CHECK |
|-----|--------------------------------------|------------|--------|-------|
| 00  | ISSUED FOR TENDER, BID OPP: 490-2012 | 2012/07/23 | VE     | CJR   |

**SNC-LAVALIN INC.**  
148 Nature Park Way  
Winnipeg, MB, Canada R3P 0X7  
204-786-8080

DESIGNED BY: V. ELIMBAN  
DRAWN BY: S. FUNK/M. TUGADE  
SCALE: 1:50  
DATE: 2010/10/06  
CONSULTANT NO.: 508955-0000-47DD-0131

CHECKED BY: C. REIMER  
APPROVED BY: C. REIMER  
RELEASED FOR CONSTRUCTION BY:  
DATE:

ENGINEER'S SEAL  
**PRELIMINARY**  
NOT TO BE  
USED FOR  
CONSTRUCTION

**THE CITY OF WINNIPEG**  
WATER AND WASTE DEPARTMENT

MACLEAN WATER PUMPING STATION

ELECTRICAL EQUIPMENT PLAN  
MEZZANINE LEVEL

CITY DRAWING NUMBER: 1-0630M-E0031  
SHEET: 002  
REV: 00  
SIZE: A1