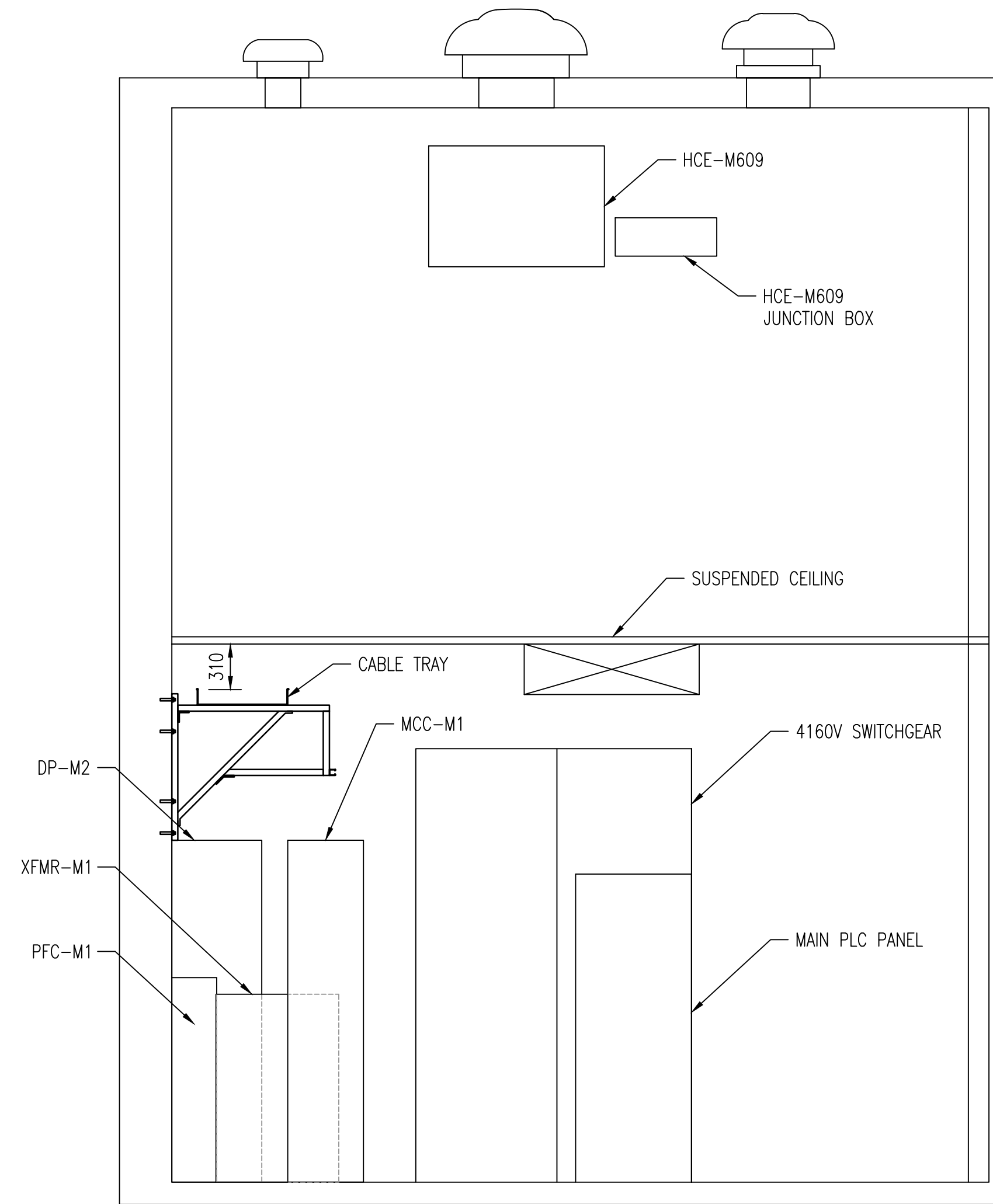


**CABLE TRAY LAYOUT - ELECTRICAL ROOM - ELEV. 232.260**

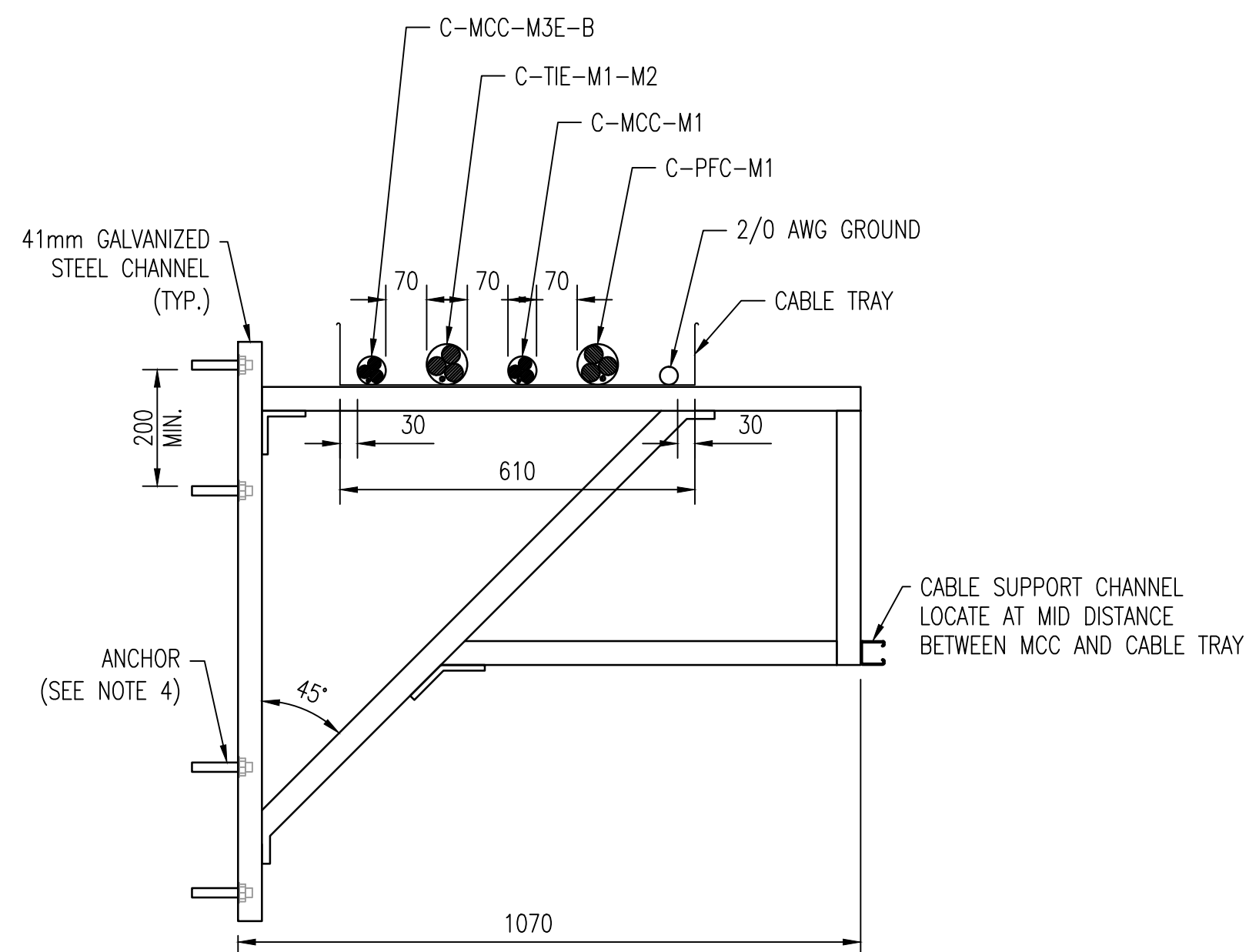
SCALE: 1 : 50



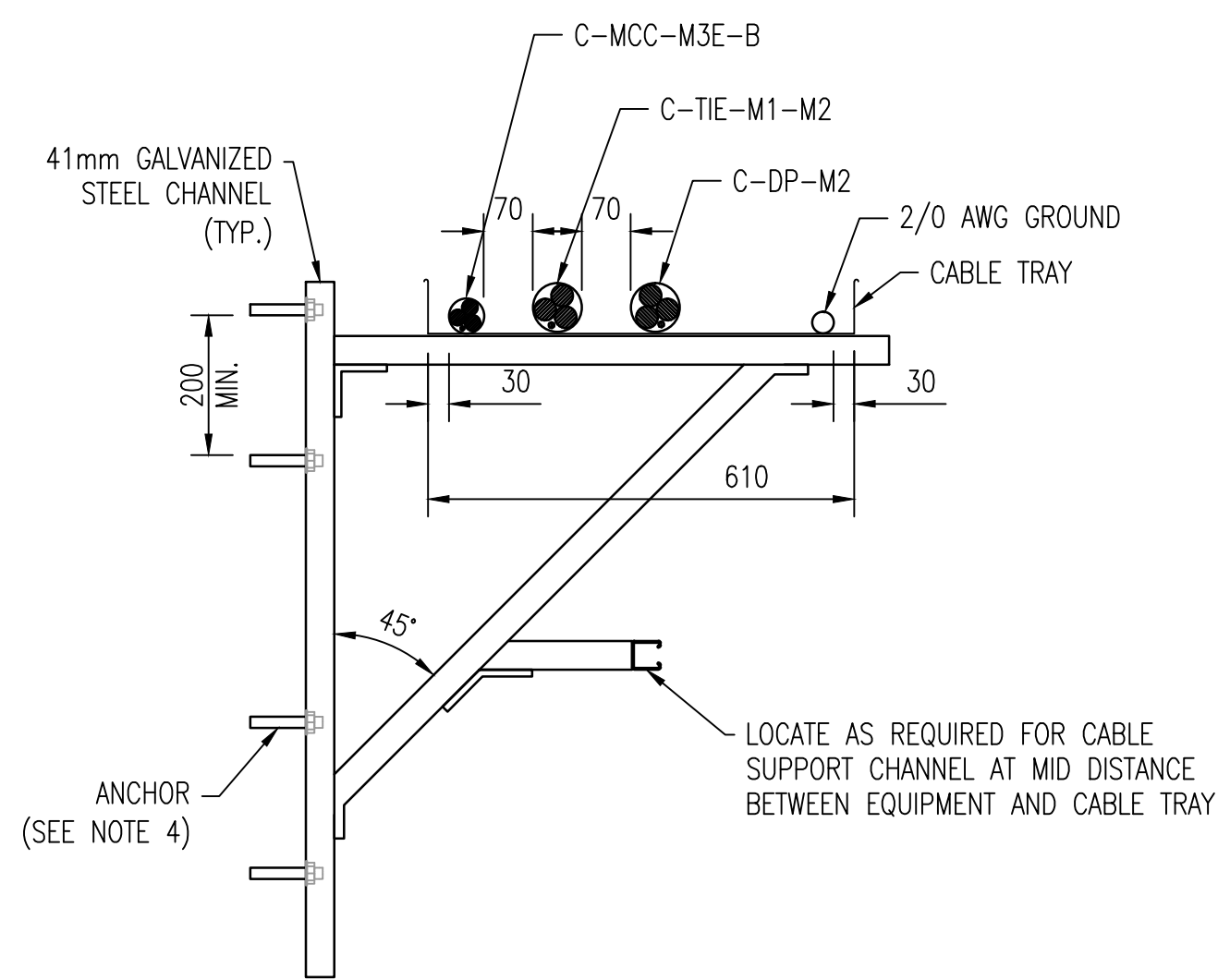
**SECTION 1**  
SCALE: 1 : 30

**NOTES:**

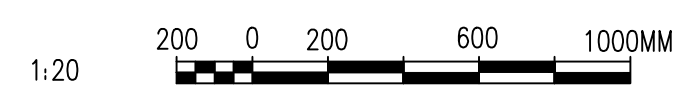
1. PROVIDE GALVANIZED STEEL CHANNEL SUPPORT OF CABLE TRAY TO FACILITATE CABLE TRAY INSTALLATION AS SHOWN. SUPPORT CABLE TRAY AT MAXIMUM 3.0 METER INTERVALS.
2. CABLE TRAY TO BE GALVANIZED STEEL WITH CSA CLASS D1 LOAD RATING.
3. STEEL CHANNEL TO HAVE MINIMUM 2.7mm THICKNESS (12 GAUGE). UTILIZE 12.7mmØ 79.4mm LONG HILTI HIT-HY 20 ANCHORS WITH HIT-A RODS FOR HOLLOW CONCRETE BLOCKS. INSTALL ANCHORS IN THE CENTRE OF THE HOLLOW CONCRETE BLOCKS, AS PER THE MANUFACTURER'S INSTRUCTIONS.



**SECTION 2**  
SCALE: 1 : 10



**SECTION 3**  
SCALE: 1 : 10



NO.	REVISIONS	DATE	DESIGN	CHECK
00	ISSUED FOR TENDER, BID OPP: 490-2012	2012/07/23	BJC	CJR

<p>SNC-LAVALIN INC. 148 Nature Park Way Winnipeg, MB, Canada R3P 0X7 204-786-8080</p>	
DESIGNED BY: B. CLEVEN	CHECKED BY: C. REIMER
DRAWN BY: M.J. PERSSON	APPROVED BY: C. REIMER
SCALE: AS SHOWN	RELEASED FOR CONSTRUCTION BY: DATE: 2012/01/20
CONSULTANT NO.: 508955-0000-47DD-0035	

ENGINEER'S SEAL

**PRELIMINARY**  
NOT TO BE  
USED FOR  
CONSTRUCTION

<p>THE CITY OF WINNIPEG WATER AND WASTE DEPARTMENT</p>			
MACLEAN WATER PUMPING STATION			
CABLE TRAY LAYOUT ELECTRICAL ROOM			
CITY DRAWING NUMBER 1-0630M-E0035	SHEET 001	REV. 00	SIZE A1

DRAWING NUMBER	REFERENCE DRAWINGS
----------------	--------------------