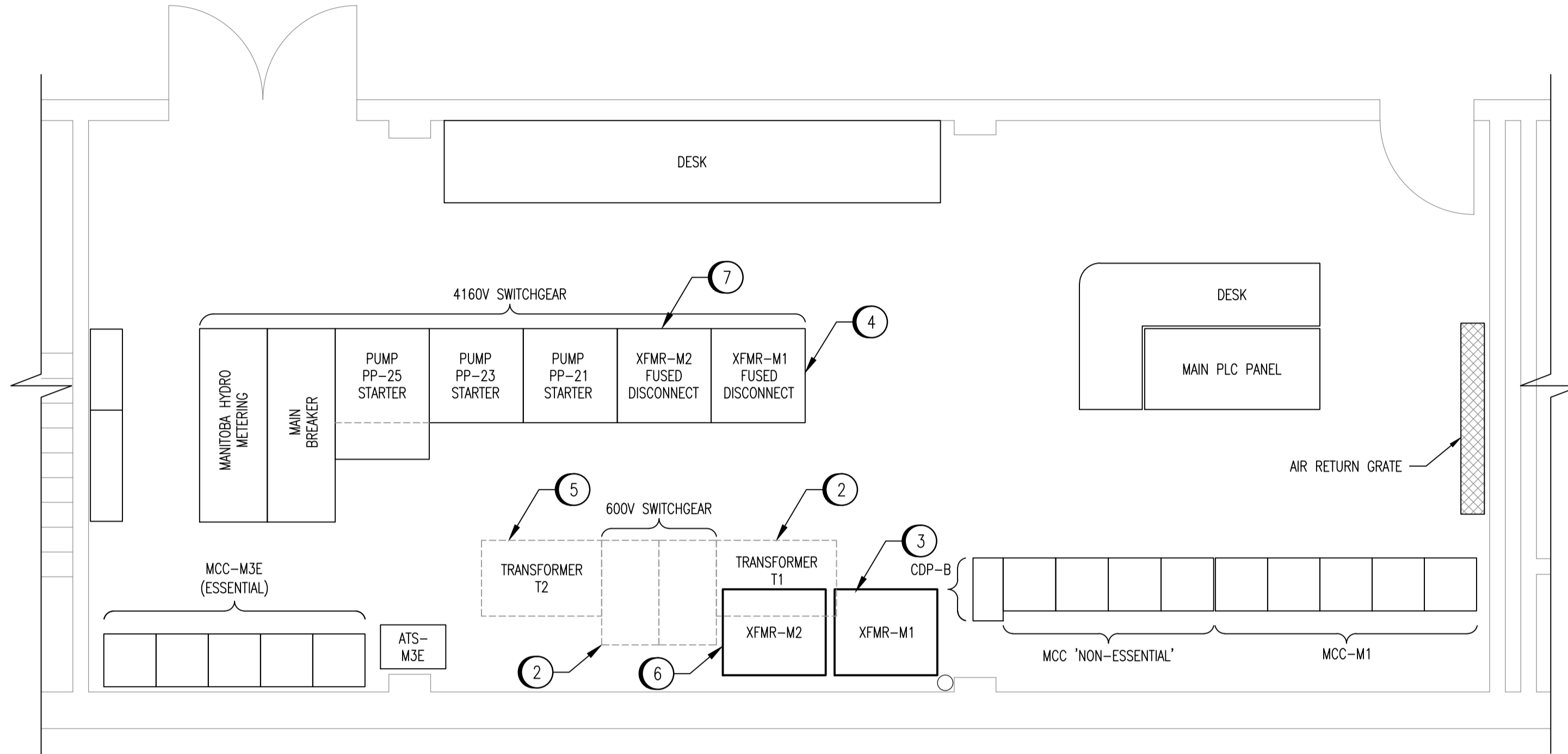


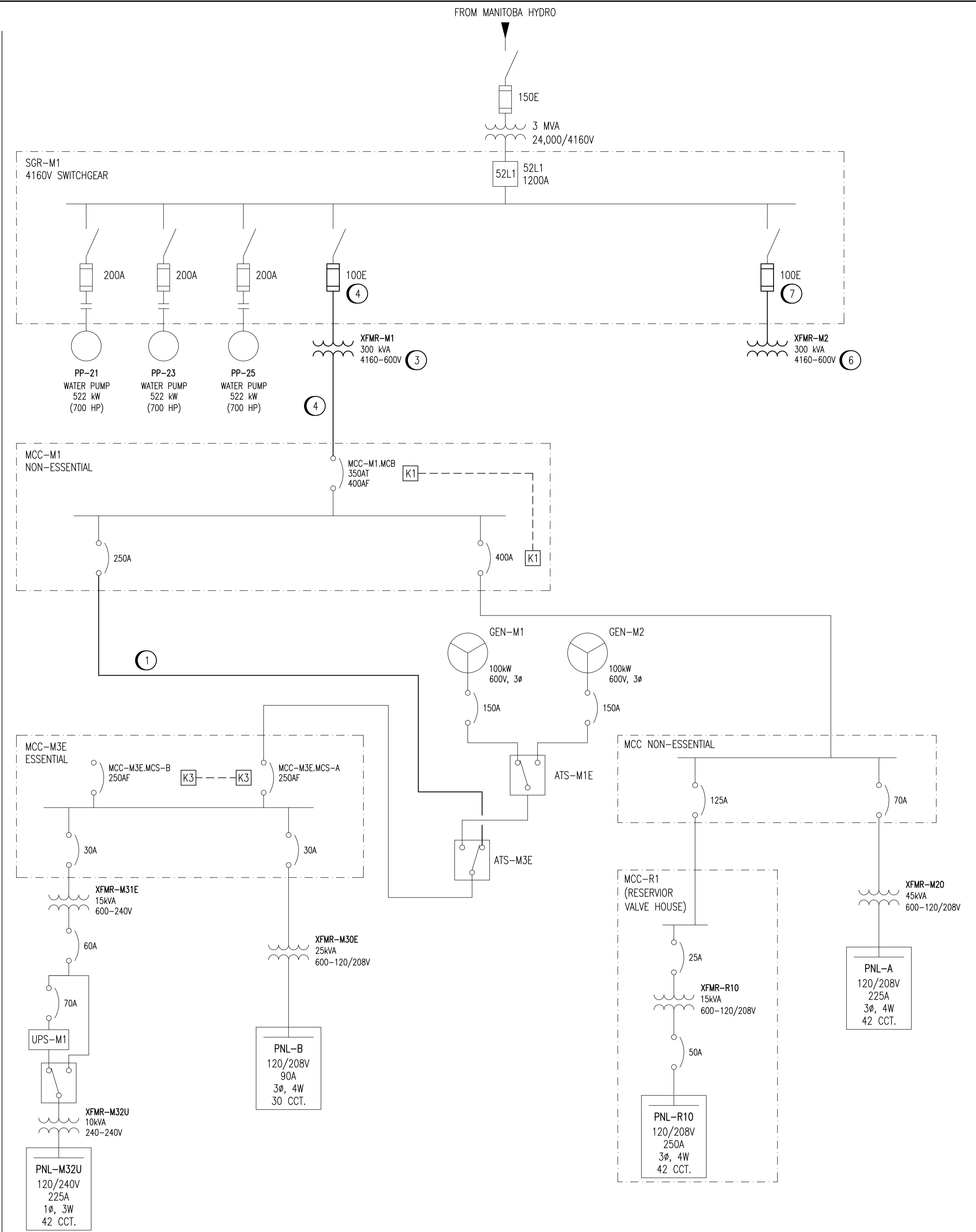
LEGEND:

- EXISTING
- NEW WORK
- - - DEMOLITION



CONSTRUCTION SEQUENCE:

- 1 DISCONNECT ATS-M3E FEED FROM THE 600V SWITCHGEAR LT1/LTG BREAKERS. FEED FROM MCC-M1 WITH A TEMPORARY 250 MCM CABLE.
- 2 DEMOLISH EXISTING TRANSFORMER T1 AND 600V SWITCHGEAR. PROVIDE SUITABLE BARRIER FOR TRANSFORMER T2.
- 3 INSTALL XFMR-M1.
- 4 FEED XFMR-M1 FROM 4160V SWITCHGEAR VIA THE EXISTING 4160V FUSED DISCONNECT. REPLACE FUSES WITH 100A, E-RATED FUSES. DISCONNECT SECONDARY OF TRANSFORMER T2 TO MCC-M1. CONNECT XFMR-M1 TO MCC-M1.
- 5 DEMOLISH EXISTING TRANSFORMER T2.
- 6 INSTALL NEW TRANSFORMER XFMR-M2.
- 7 FEED XFMR-M2 FROM 4160V SWITCHGEAR VIA THE EXISTING 4160V FUSED DISCONNECT. REPLACE THE FUSES WITH 100A, E-RATED FUSES.



| | |
|----------------|--------------------------------|
| 1-0630M-E0022 | SINGLE LINE DIAGRAM - OVERVIEW |
| DRAWING NUMBER | REFERENCE DRAWINGS |

1:20



| NO. | REVISIONS | DATE | DESIGN | CHECK |
|-----|--------------------------------------|------------|--------|-------|
| 00 | ISSUED FOR TENDER, BID OPP: 490-2012 | 2012/07/23 | VE | CJR |

| | |
|---------------------------------------------------------------------------------------------|-------------------------------|
| SNC-LAVALIN INC. 148 Nature Park Way Winnipeg, MB, Canada R3P 0X7 204-786-8080 | |
| DESIGNED BY: V. ELIMBAN | CHECKED BY: C. REIMER |
| DRAWN BY: M.J. PERSSON | APPROVED BY: C. REIMER |
| SCALE: NTS | RELEASED FOR CONSTRUCTION BY: |
| DATE: 2011/12/21 | DATE: |
| CONSULTANT NO.: 508955-0000-47DD-0038 | |

ENGINEER'S SEAL
PRELIMINARY
 NOT TO BE
 USED FOR
 CONSTRUCTION

| | |
|--------------------------------------------------------|------------------------------|
| THE CITY OF WINNIPEG WATER AND WASTE DEPARTMENT | |
| MACLEAN WATER PUMPING STATION | |
| CONSTRUCTION PLAN ELECTRICAL ROOM PHASE 3 | |
| CITY DRAWING NUMBER 1-0630M-E0038 | SHEET REV. SIZE 001 00 A1 |