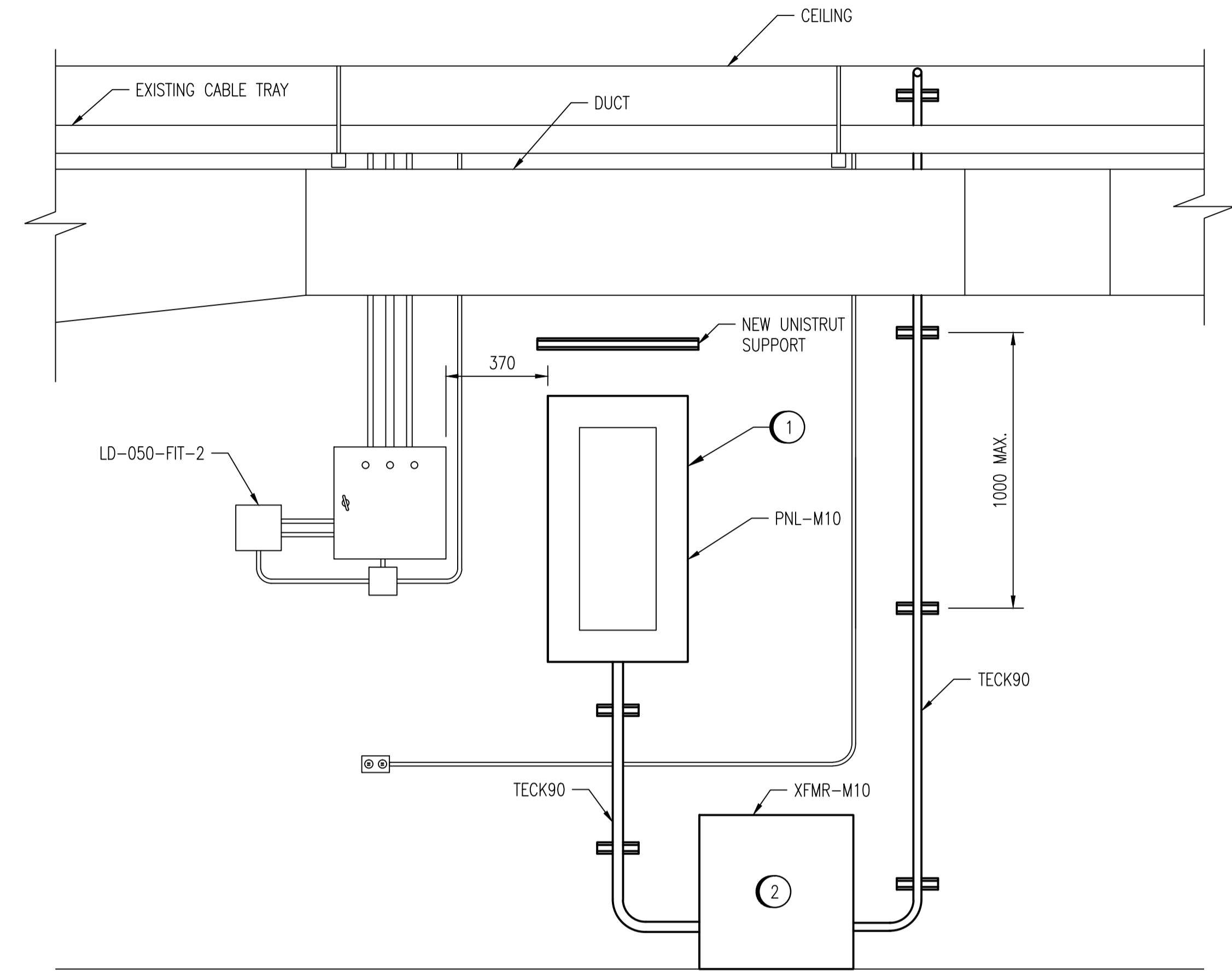


MEZZANINE LEVEL - ELEV. 228.600
SCALE: 1 : 30



1
-
PNL-M10 ELEVATION
SCALE: 1 : 15

CONSTRUCTION NOTES:

- ① SUPPLY AND INSTALL NEW 120/208V, 225 A, 3Ø, 4W PANELBOARD, PNL-M10. MAIN BREAKER TO BE BOTTOM MOUNTED.
- ② SUPPLY AND INSTALL NEW 30KVA, 600-120/208V TRANSFORMER, XFMR-M10.

- ① SUPPLY AND INSTALL NEW 120/208V, 225 A, 3Ø, 4W PANELBOARD, PNL-M10. MAIN BREAKER TO BE BOTTOM MOUNTED.
- ② SUPPLY AND INSTALL NEW 30KVA, 600-120/208V TRANSFORMER, XFMR-M10.

| | |
|----------------|----------------------------|
| 1-0630M-M0027 | DUCTWORK MODIFICATIONS |
| 1-0630M-E0023 | MCC-M1 SINGLE LINE DIAGRAM |
| 1-0630M-E0042 | PNL-M10 SCHEDULE |
| DRAWING NUMBER | REFERENCE DRAWINGS |

LEGEND:

- EXISTING
- NEW WORK

1:30



| NO. | REVISIONS | DATE | DESIGN | CHECK |
|-----|--------------------------------------|------------|--------|-------|
| 00 | ISSUED FOR TENDER, BID OPP: 490-2012 | 2012/07/23 | BJC | CJR |

SNC-LAVALIN INC.
148 Nature Park Way
Winnipeg, MB, Canada R3P 0X7
204-796-8090

DESIGNED BY: B. CLEVEN
DRAWN BY: M.J. PERSSON
SCALE: AS NOTED
DATE: 2012/03/07

CHECKED BY: C. REIMER
APPROVED BY: C. REIMER
RELEASED FOR CONSTRUCTION BY:
DATE:

CONSULTANT NO.: 508955-0000-47DD-0044

ENGINEER'S SEAL

PRELIMINARY
NOT TO BE
USED FOR
CONSTRUCTION

THE CITY OF WINNIPEG
WATER AND WASTE DEPARTMENT

MACLEAN PUMPING STATION

INSTALLATION DETAILS
PNL-M10

CITY DRAWING NUMBER: 1-0630M-E0044
SHEET: 001
REV: 00
SIZE: A1