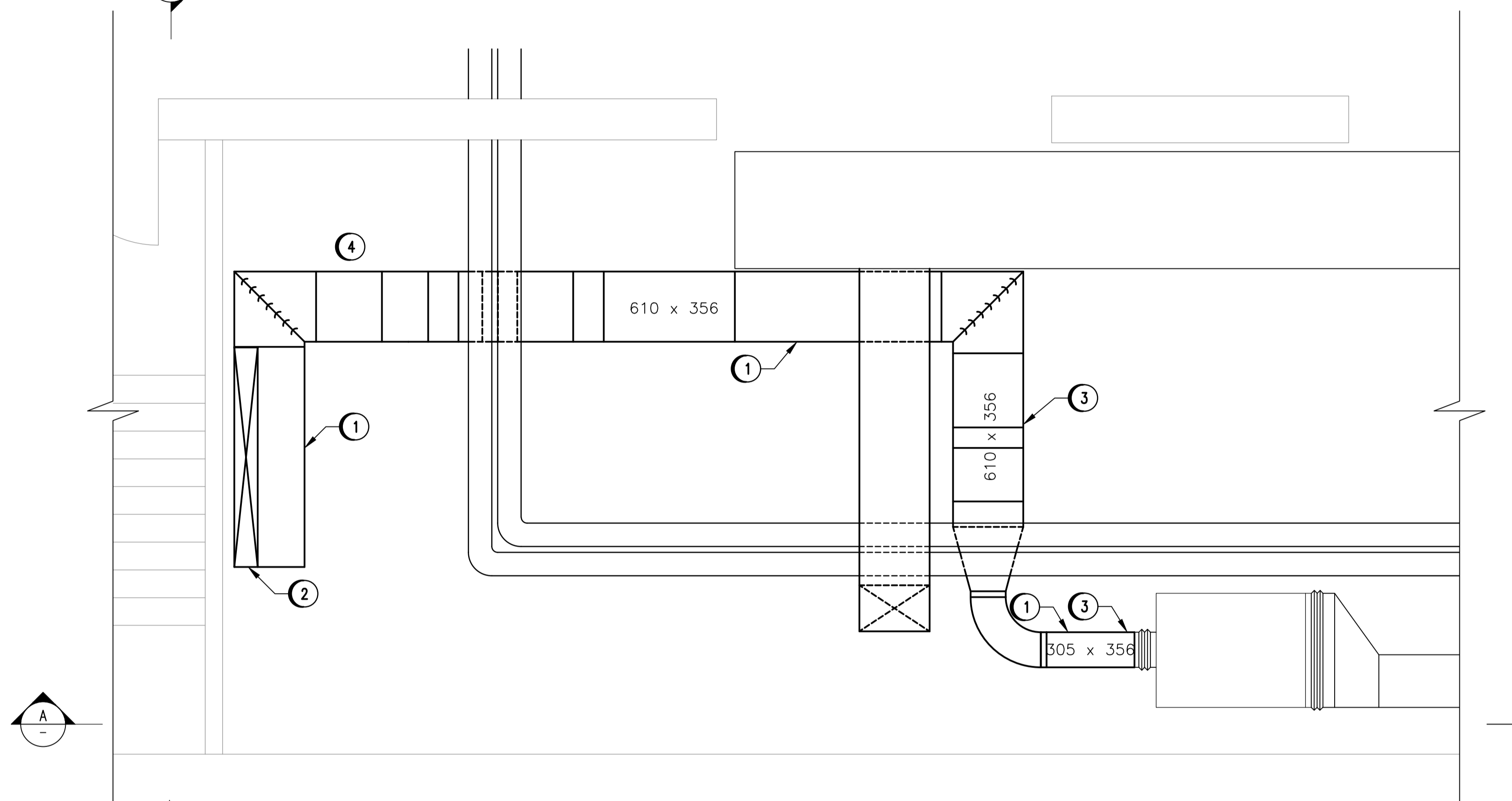
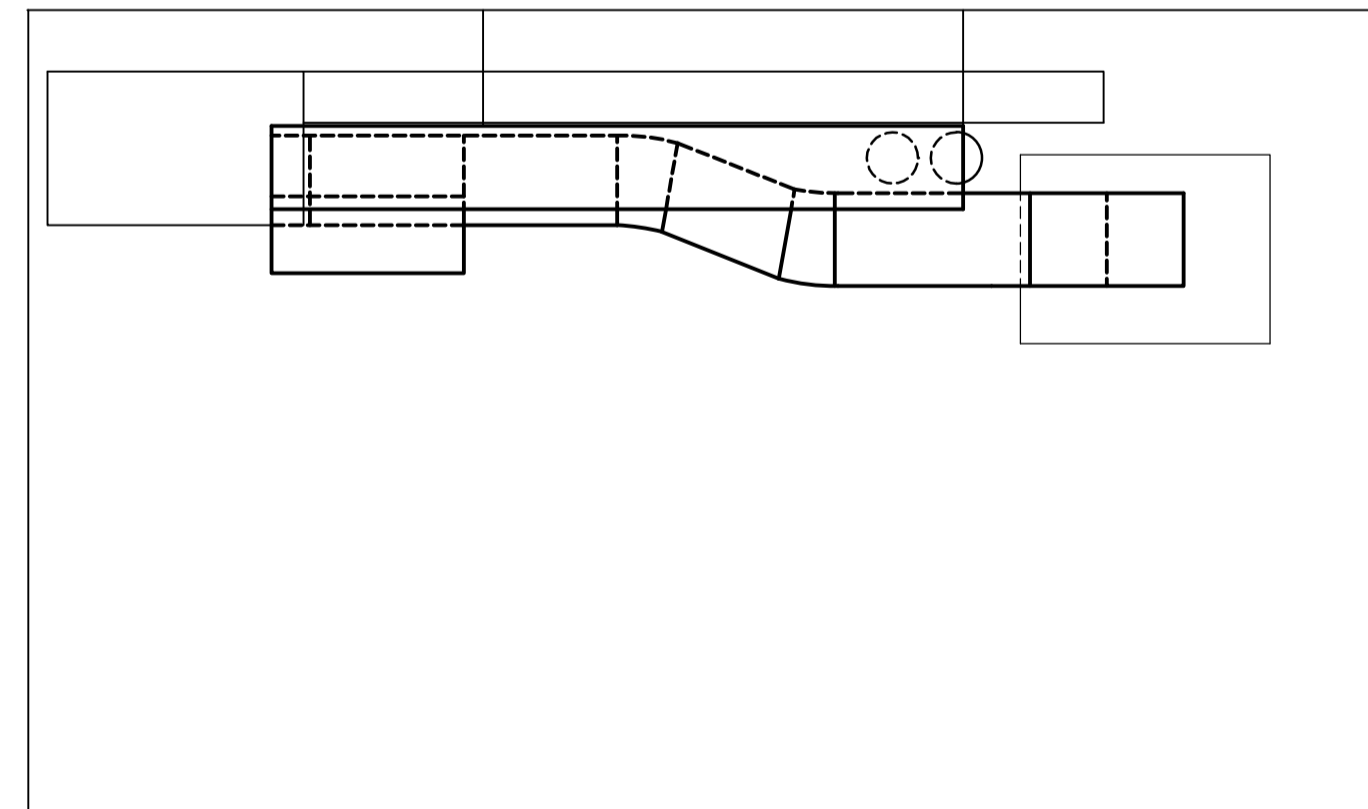


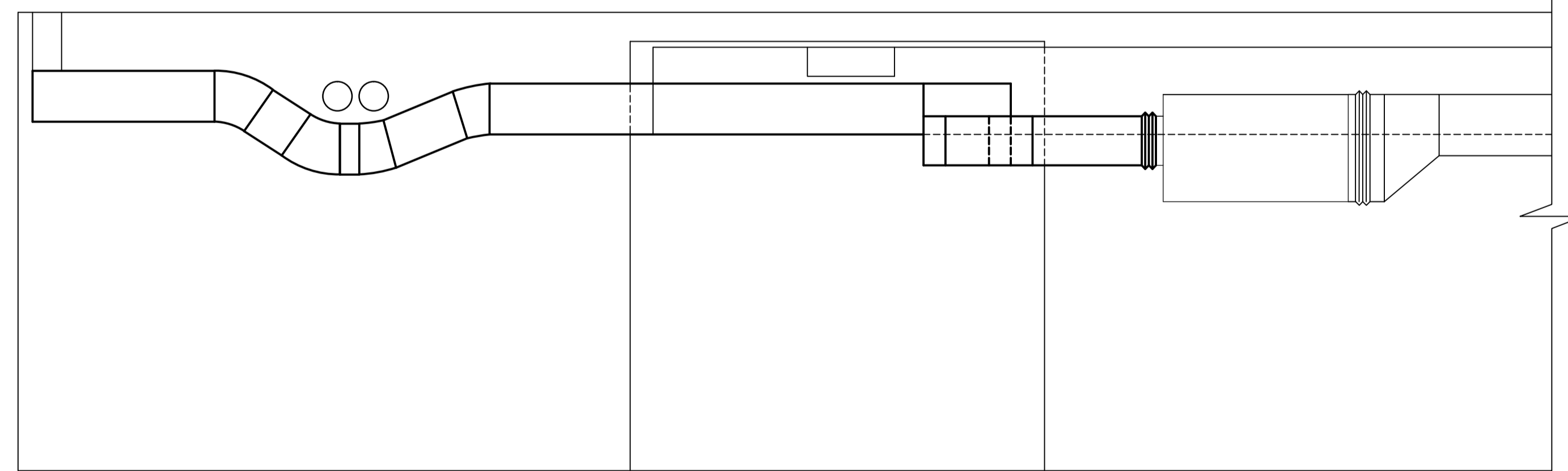
KEY PLAN
N.T.S



PLAN VIEW - ELEV. 228.600
SCALE: 1:30



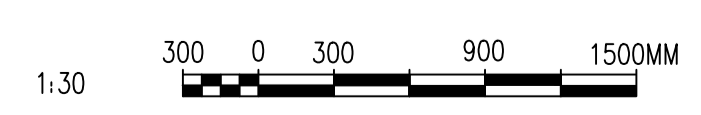
SECTION B
SCALE: 1:30



SECTION A
SCALE: 1:30

- LEGEND:**
- EXISTING
 - NEW WORK

- NEW WORK NOTES:**
- ① SUPPLY AND INSTALL NEW DUCTWORK.
 - ② CONNECT NEW DUCTWORK TO EXISTING RISERS.
 - ③ RE-INSTALL DUCT SENSORS RETAINED DURING REMOVALS.
 - ④ RE-LOCATE SUPPORTS FOR OTHER SERVICES AS REQUIRED.



NO.	REVISIONS	DATE	DESIGN	CHECK
00	ISSUED FOR TENDER, BID OPP. 490-2012	2012/07/23	TS	

SNC-LAVALIN INC.
148 Nature Park Way
Winnipeg, MB, Canada R3P 0X7
204-798-8080

DESIGNED BY: T. SCHICK
DRAWN BY: C. COOPER
SCALE: 1:30
DATE: 2012/03/07

CHECKED BY:
APPROVED BY: C. REIMER
RELEASED FOR CONSTRUCTION BY:
DATE:

CONSULTANT NO.: 508955-0000-450D-0002

ENGINEER'S SEAL

**PRELIMINARY
NOT TO BE
USED FOR
CONSTRUCTION**

THE CITY OF WINNIPEG
WATER AND WASTE DEPARTMENT

MACLEAN WATER PUMPING STATION

HVAC DUCT PLAN
MEZZANINE LEVEL - NORTH
NEW WORK

CITY DRAWING NUMBER: 1-0630M-M0026
SHEET: 001
REV.: 00
SIZE: A1