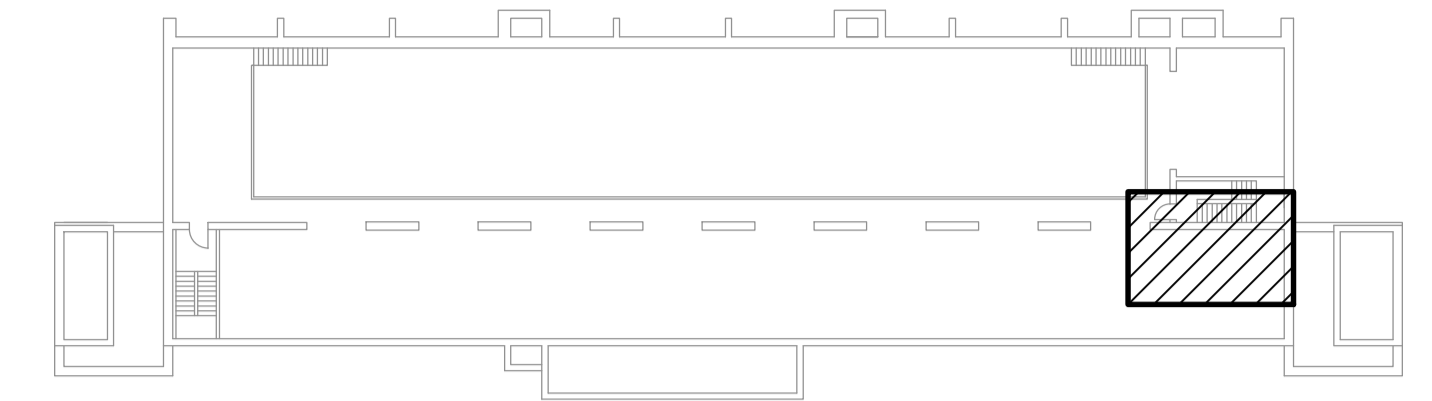


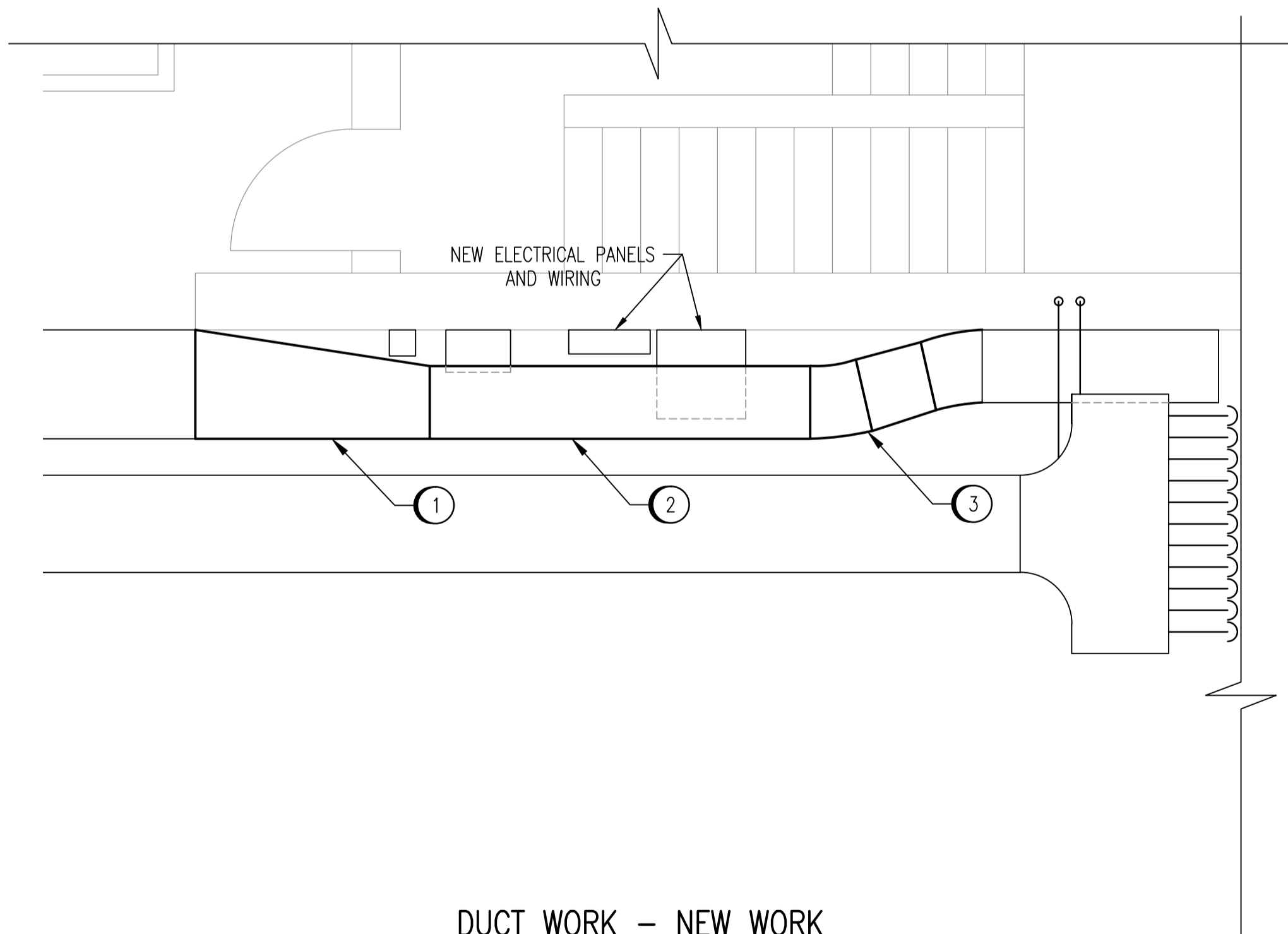
DUCT WORK - REMOVALS
SCALE: 1 : 30



KEY PLAN
N.T.S

REMOVAL NOTES:

- (A) REMOVE AND RETAIN EXISTING REDUCER.
- (B) REMOVE EXISTING DUCT.



DUCT WORK - NEW WORK
SCALE: 1 : 30

NEW WORK NOTES:

- (1) RE-INSTALL REDUCER IN ORIENTATION SHOWN.
- (2) RE-INSTALL DUCT RETAINED FROM REMOVALS AS REQUIRED.
- (3) SUPPLY AND INSTALL NEW 457 x 457 DUCT AS SHOWN.

LEGEND:

- EXISTING
- NEW WORK
- - - DEMOLITION



NO.	REVISIONS	DATE	DESIGN	CHECK
00	ISSUED FOR TENDER, BID OPP: 490-2012	2012/07/23	TS	

<p>SNC-LAVALIN INC. 148 Nature Park Way Winnipeg, MB, Canada R3P 0X7 204-786-8080</p>	
DESIGNED BY: T. SCHICK	CHECKED BY:
DRAWN BY: C. COOPER	APPROVED BY: C. REIMER
SCALE: 1:30	RELEASED FOR CONSTRUCTION BY:
DATE: 2012/03/07	DATE:
CONSULTANT NO.: 508955-0000-450D-0002	

ENGINEER'S SEAL
PRELIMINARY
NOT TO BE
USED FOR
CONSTRUCTION

THE CITY OF WINNIPEG
WATER AND WASTE DEPARTMENT

MACLEAN PUMPING STATION

HVAC DUCT PLAN
MEZZANINE LEVEL - SOUTH
REMOVALS AND NEW WORK

CITY DRAWING NUMBER	SHEET	REV.	SIZE
1-0630M-M0027	001	00	A1