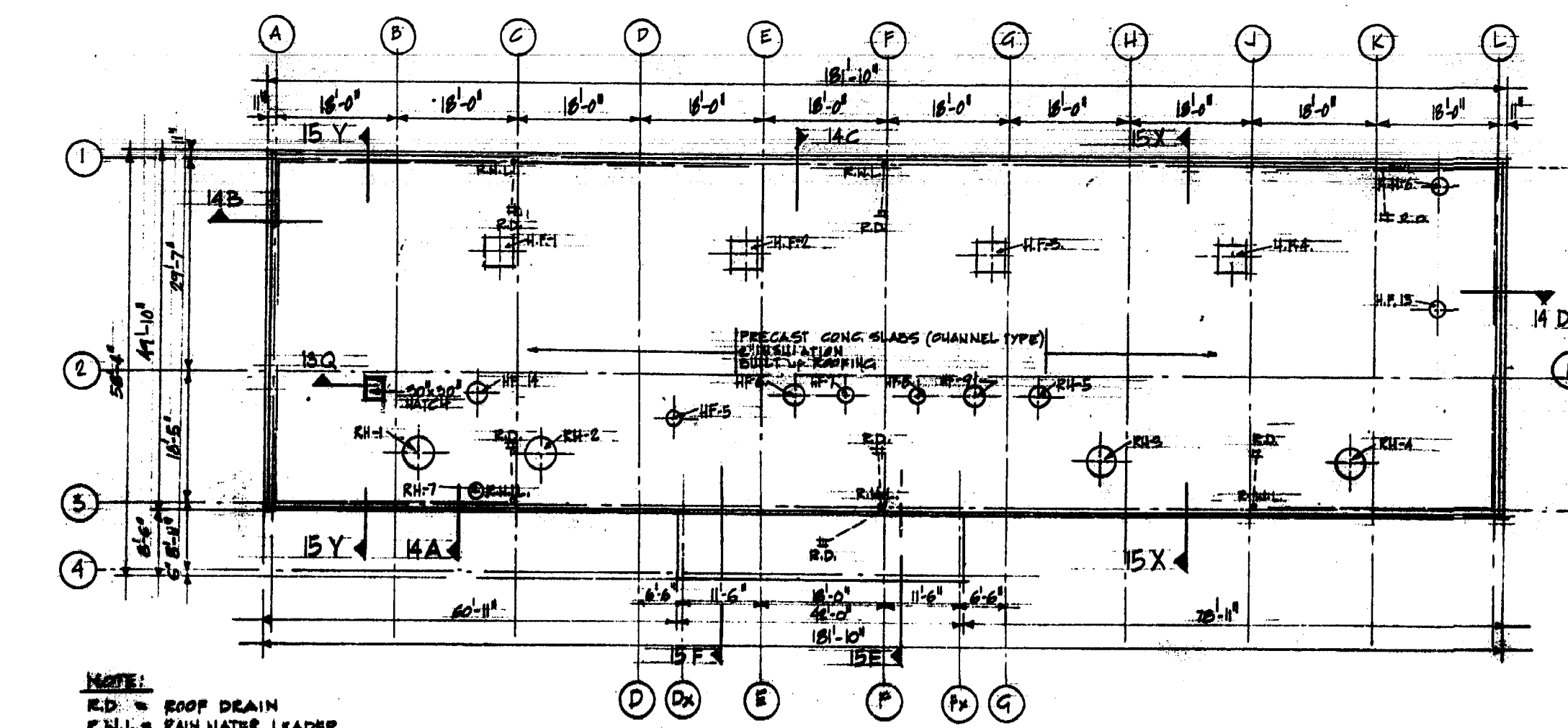
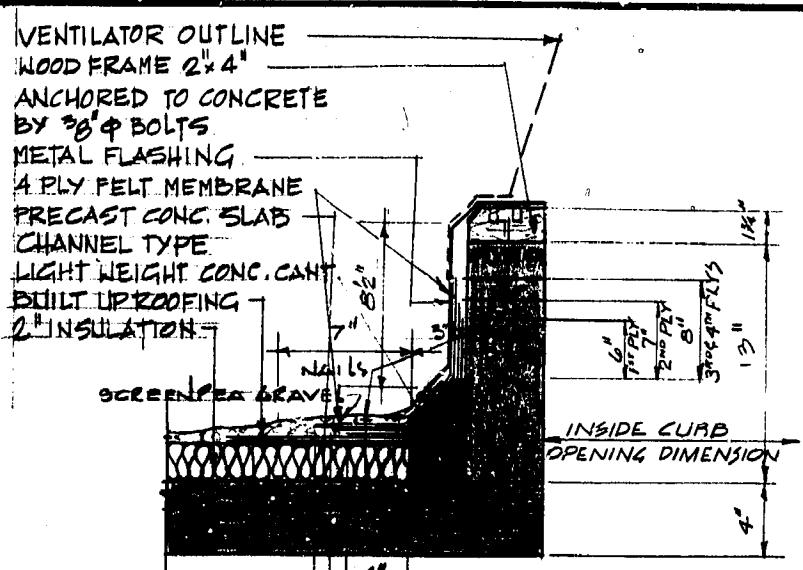


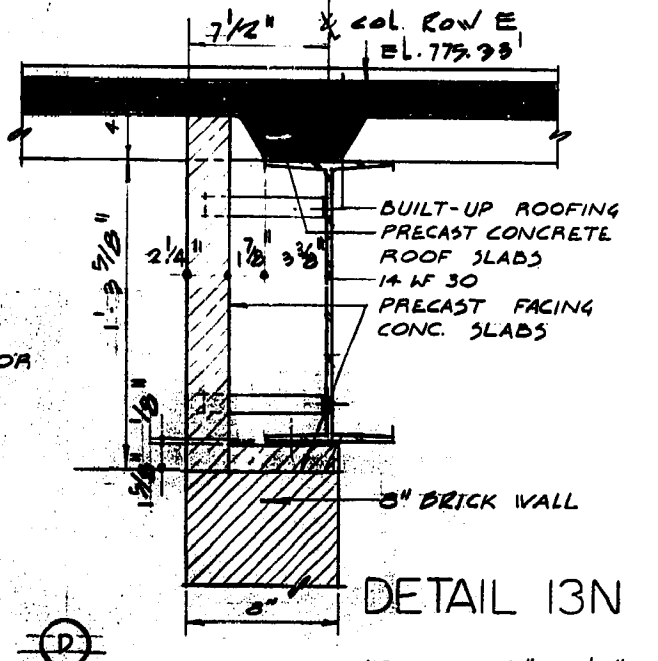
PLAN ABOVE ELEV. 762.00



ROOF PLAN
 1/4" = 1'-0"

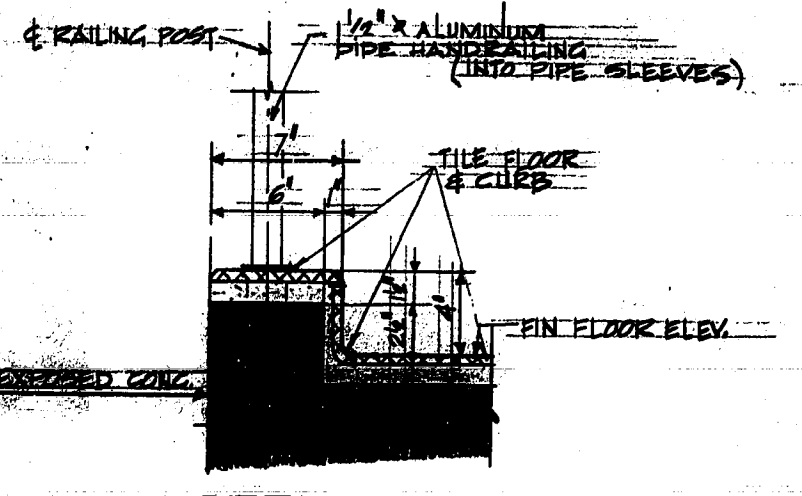


DETAIL 13Q

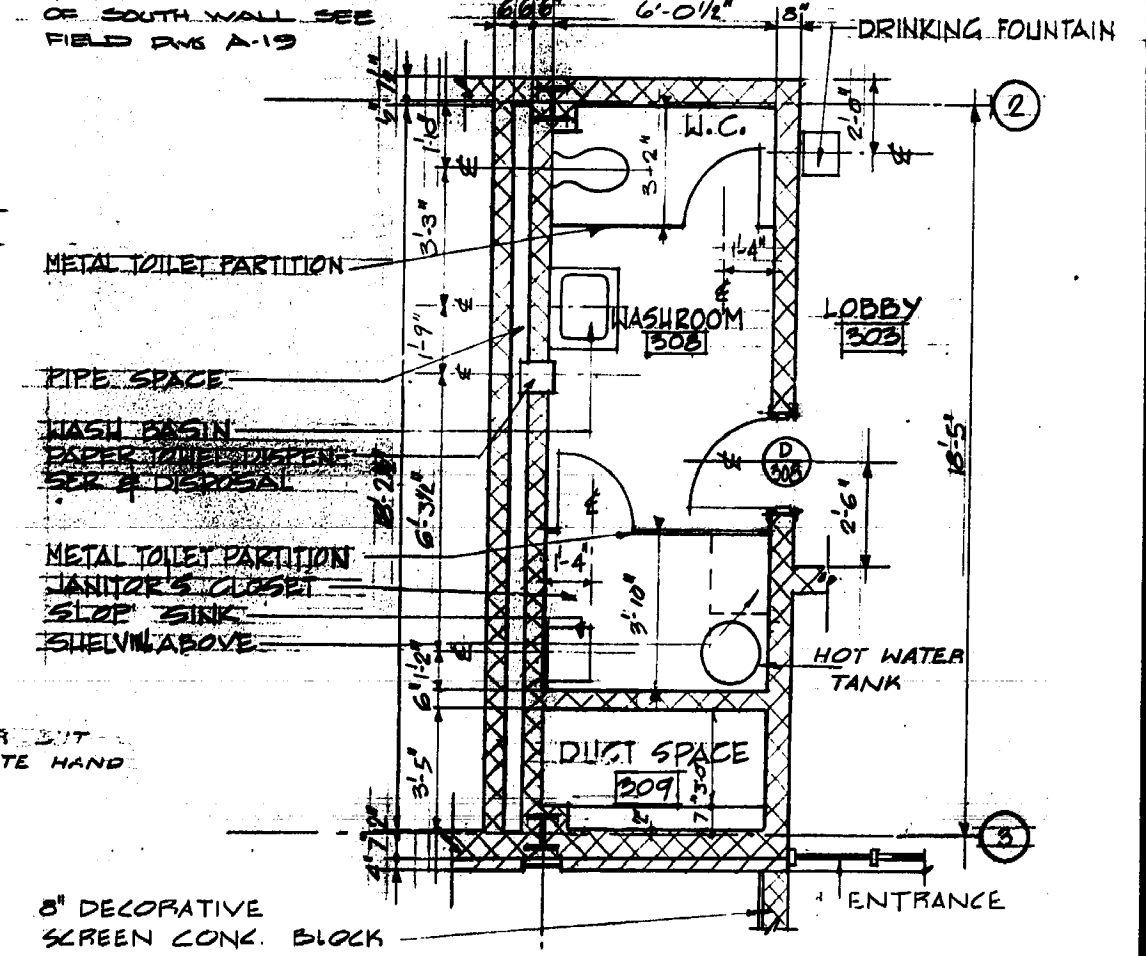


DETAIL 13N

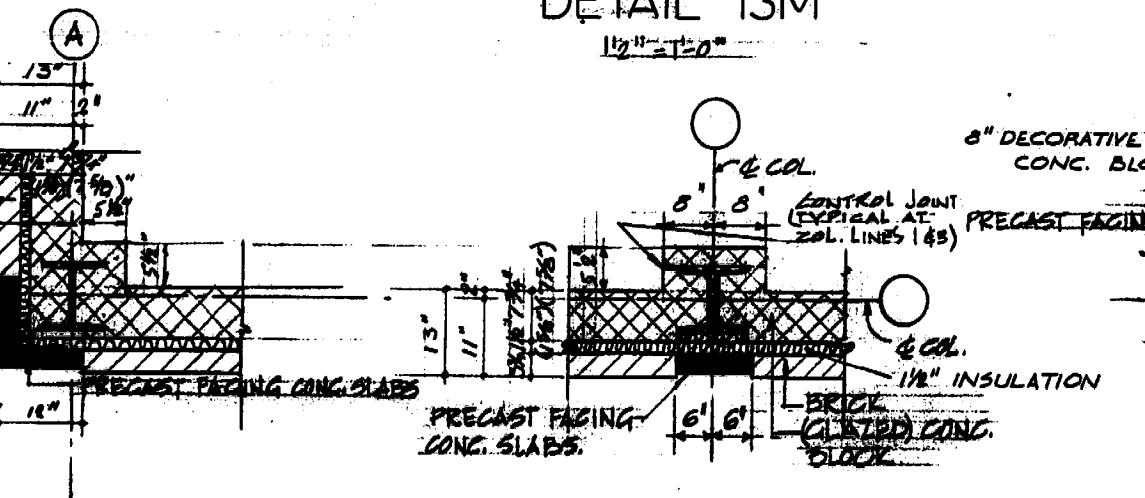
NOTE: FOR ENLARGED DETAIL OF SOUTH WALL SEE FIELD DWG A-19



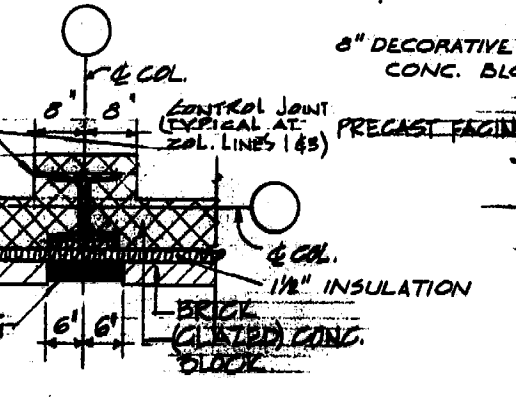
DETAIL 13M



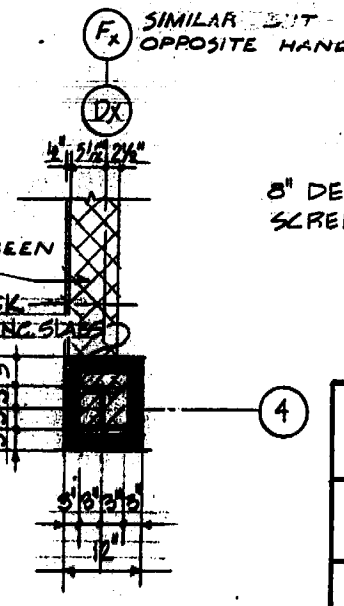
DETAIL PLAN WASHROOM 308



DETAIL 13G



DETAIL 13H



DETAIL 13K

REVISED AS BUILT, JUNE - 1962

THE METROPOLITAN CORPORATION OF GREATER WINNIPEG
 WATERWORKS AND WASTE DISPOSAL DIVISION

METRO EAST PUMPING STATION AND RESERVOIR

**CONTRACT A - PUMPING STATION
 SUPERSTRUCTURE - PLAN ABOVE
 ELEVATION 762.00 AND ROOF PLAN**

APPROVED James F. MacLaren ENGINEERS TORONTO	DESIGN ENGINEER James F. MacLaren
APPROVED J. W. MacLaren TEMPLETON ENGINEERING COMPANY PROFESSIONAL ENGINEERS WINNIPEG	ENGINEER OF WATERWORKS J. W. MacLaren DIRECTOR & CHIEF ENGINEER

DATE: JUNE 22, 1962 SCALE: AS SHOWN DWG. No. 13 OF 31

ME-20