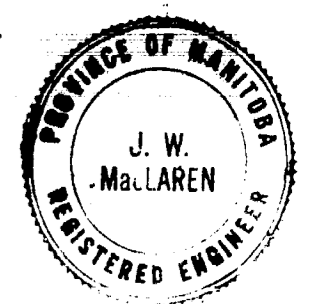
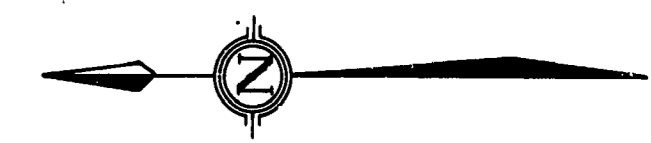
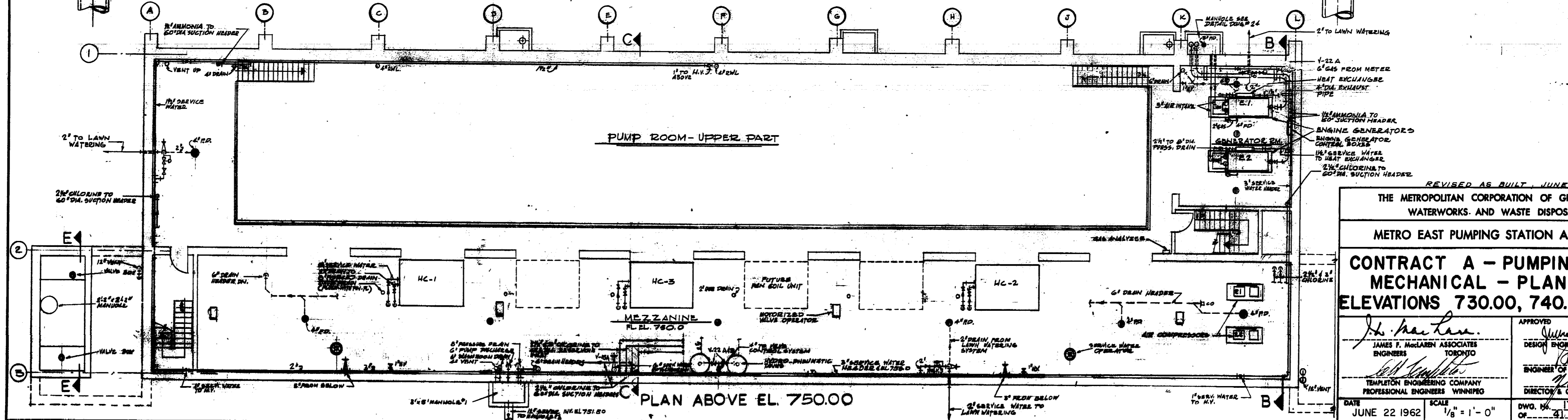
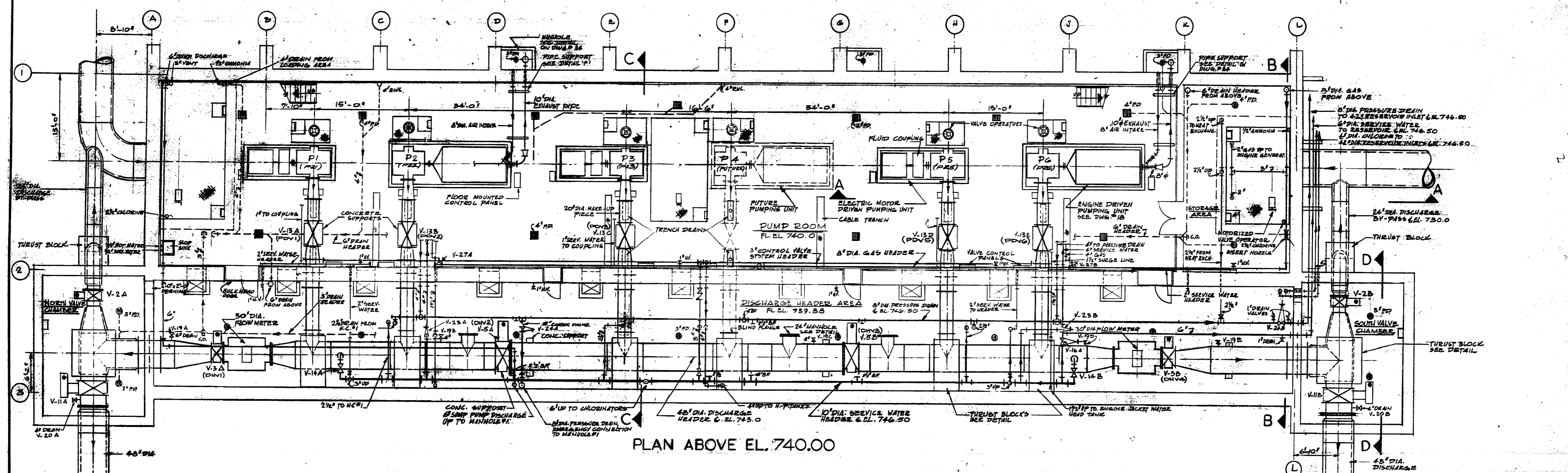
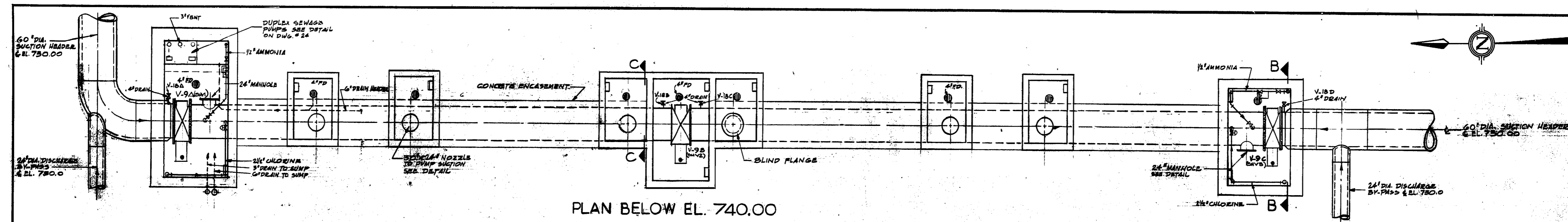


ME-24  
 DETAILS MECHANICAL - PLAN ABOVE  
 ELEV. 730.00, 740.00 & 750.00



REVISED AS BUILT, JUNE-1965

THE METROPOLITAN CORPORATION OF GREATER WINNIPEG  
 WATERWORKS AND WASTE DISPOSAL DIVISION

METRO EAST PUMPING STATION AND RESERVOIR

**CONTRACT A - PUMPING STATION  
 MECHANICAL - PLAN ABOVE  
 ELEVATIONS 730.00, 740.00 & 750.00**

APPROVED: *J. W. MacLaren*  
 JAMES F. MACLAREN ASSOCIATES  
 ENGINEERS TORONTO

DESIGNED BY: *[Signature]*  
 ENGINEER OF WATERWORKS  
 TEMPLETON ENGINEERING COMPANY  
 PROFESSIONAL ENGINEERS WINNIPEG

DATE: JUNE 22 1962 SCALE: 1/8" = 1'-0"  
 DWG. NO. 17 OF 31

**ME-24**