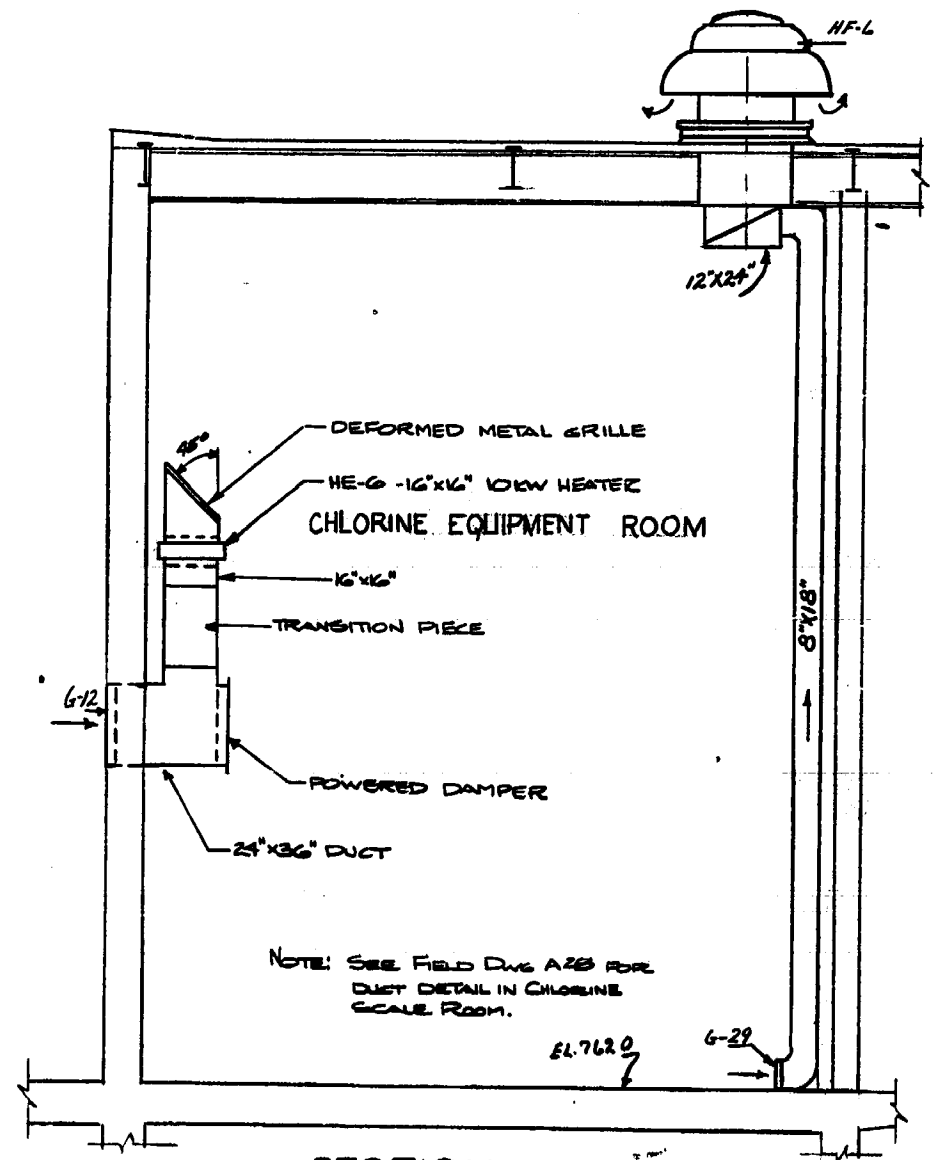
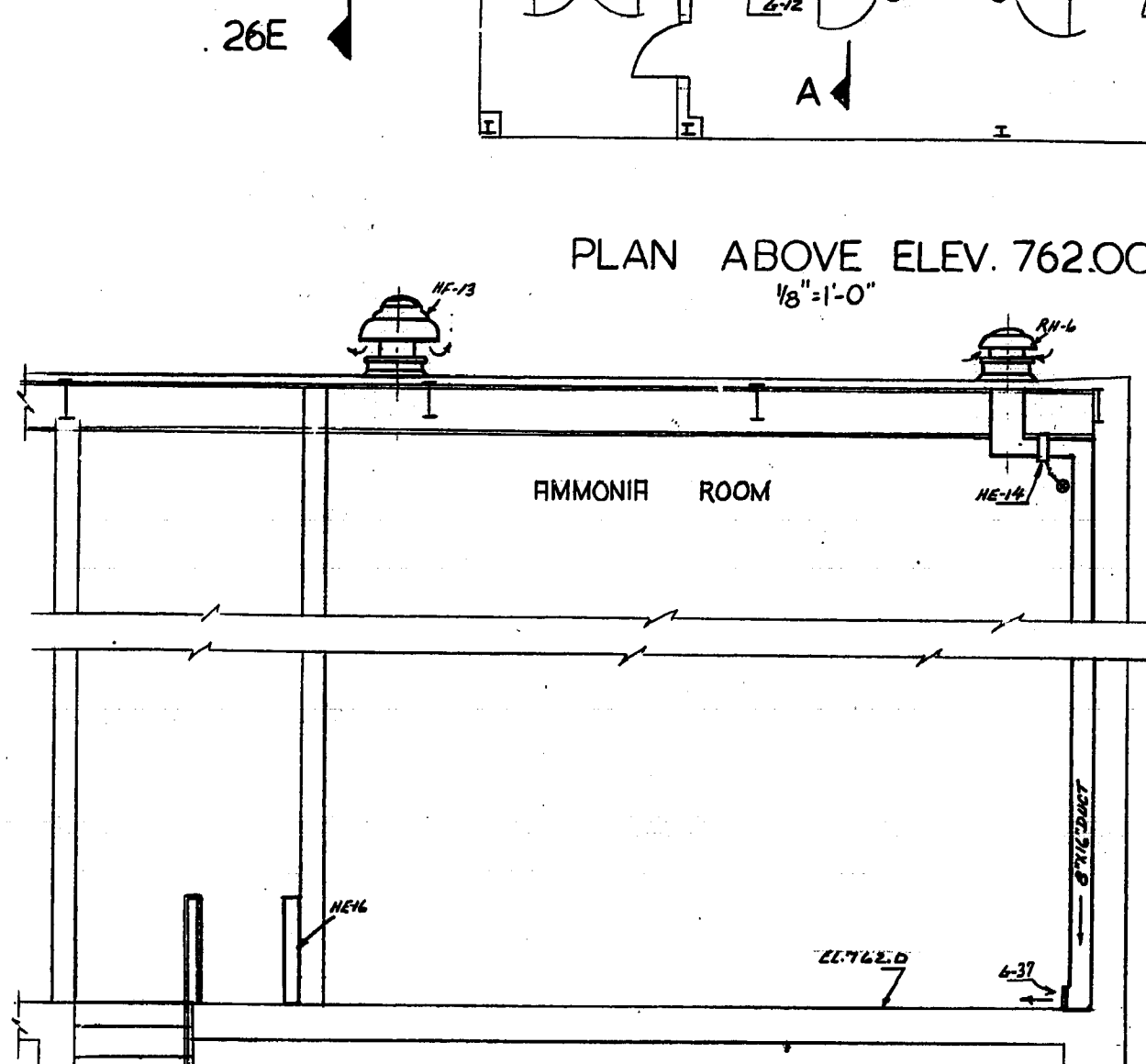


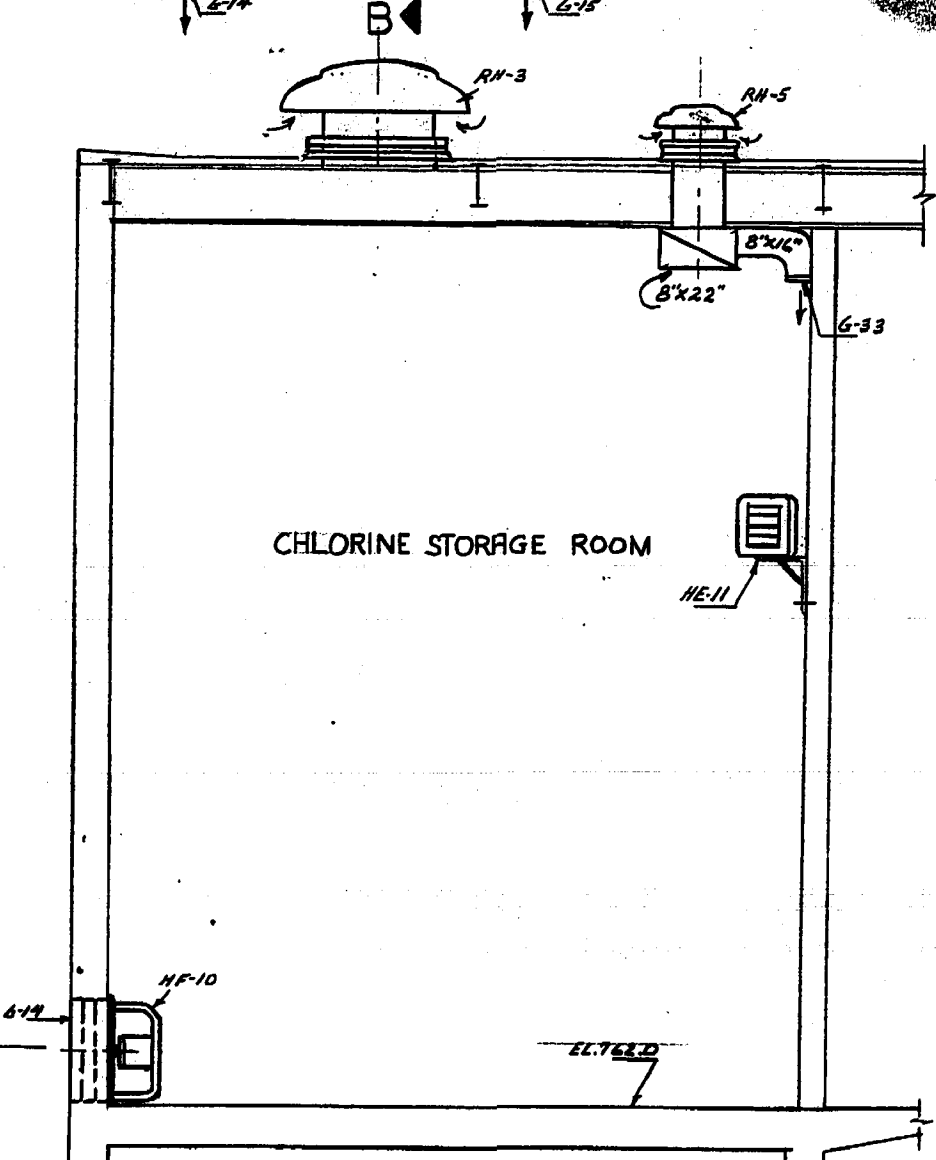
SECTION 26E
1/8" = 1'-0"



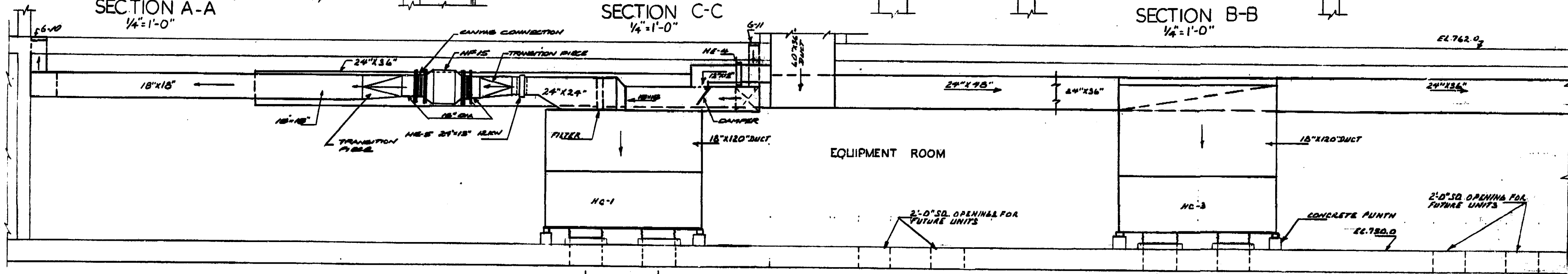
SECTION A-A
1/4" = 1'-0"



SECTION C-C
1/4" = 1'-0"



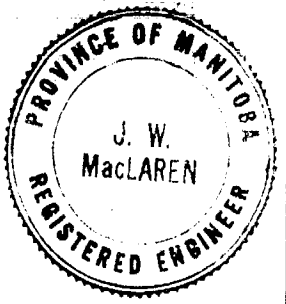
SECTION B-B
1/4" = 1'-0"



SECTION 26D
1/4" = 1'-0"

LEGEND

- RFNS - HF
- ROOF HOLES - AH
- ELECTRIC HEATERS - HE
- FAN COIL UNITS - FC
- GRILLES - G
- DAMPERS - D
- THERMOSTAT - T



REVISED AS BUILT, JUNE, 1965

THE METROPOLITAN CORPORATION OF GREATER WINNIPEG
WATERWORKS AND WASTE DISPOSAL DIVISION

METRO EAST PUMPING STATION AND RESERVOIR

**CONTRACT A - PUMPING STATION
HEATING AND VENTILATING
PLAN ABOVE ELEVATION
762.00 AND SECTIONS**

APPROVED: *J. W. MacLaren*
DESIGN ENGINEER

DESIGNED BY: *James F. MacLaren Associates*
ENGINEER OF WATERWORKS

TERMINATION ENGINEERING COMPANY
PROFESSIONAL ENGINEERS WINNIPEG
DIRECTOR & CHIEF ENGINEER

DATE: JUNE 22, 1962
SCALE: AS SHOWN
DWG. No. 26
OF 30

ME-33