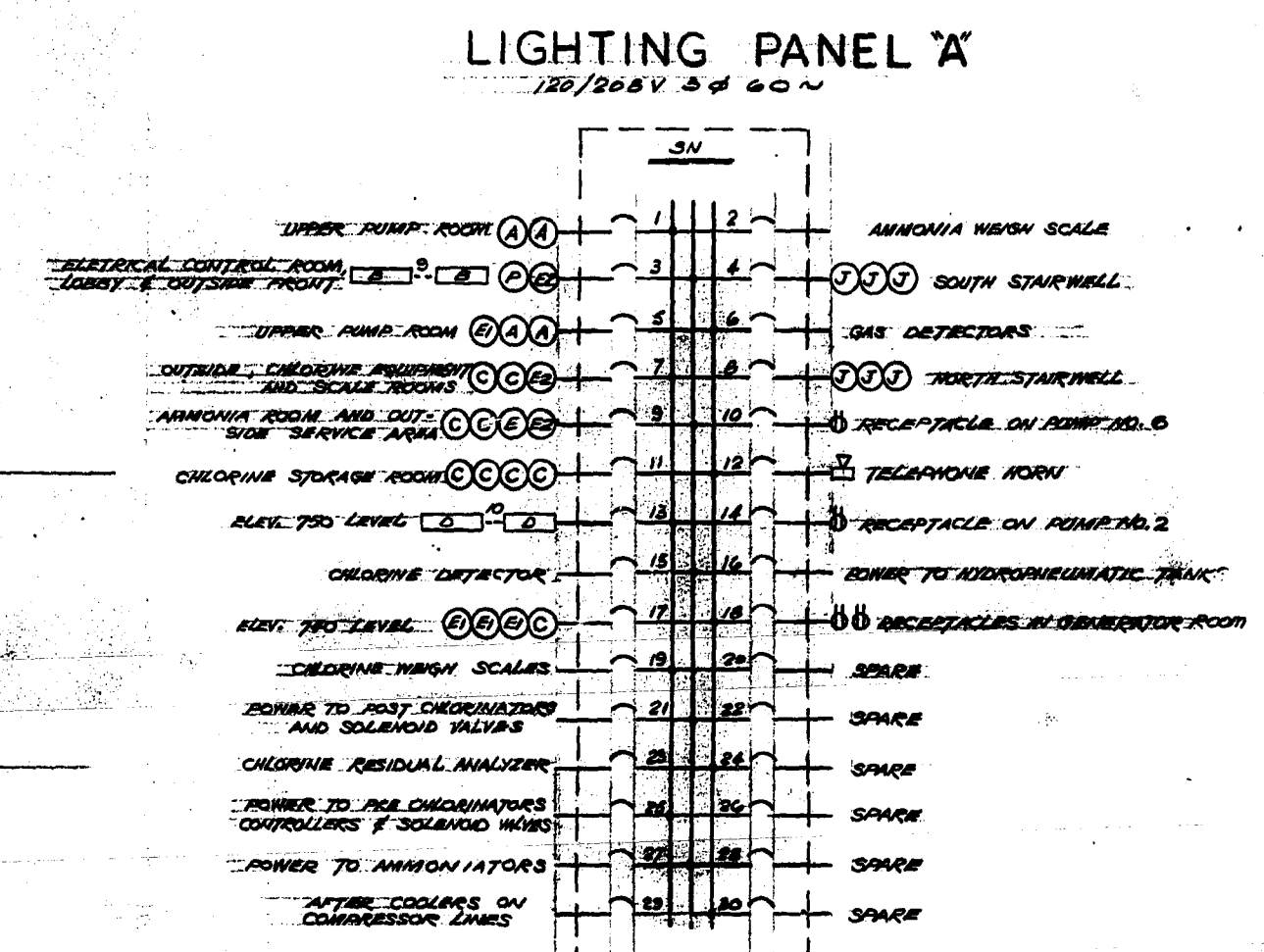
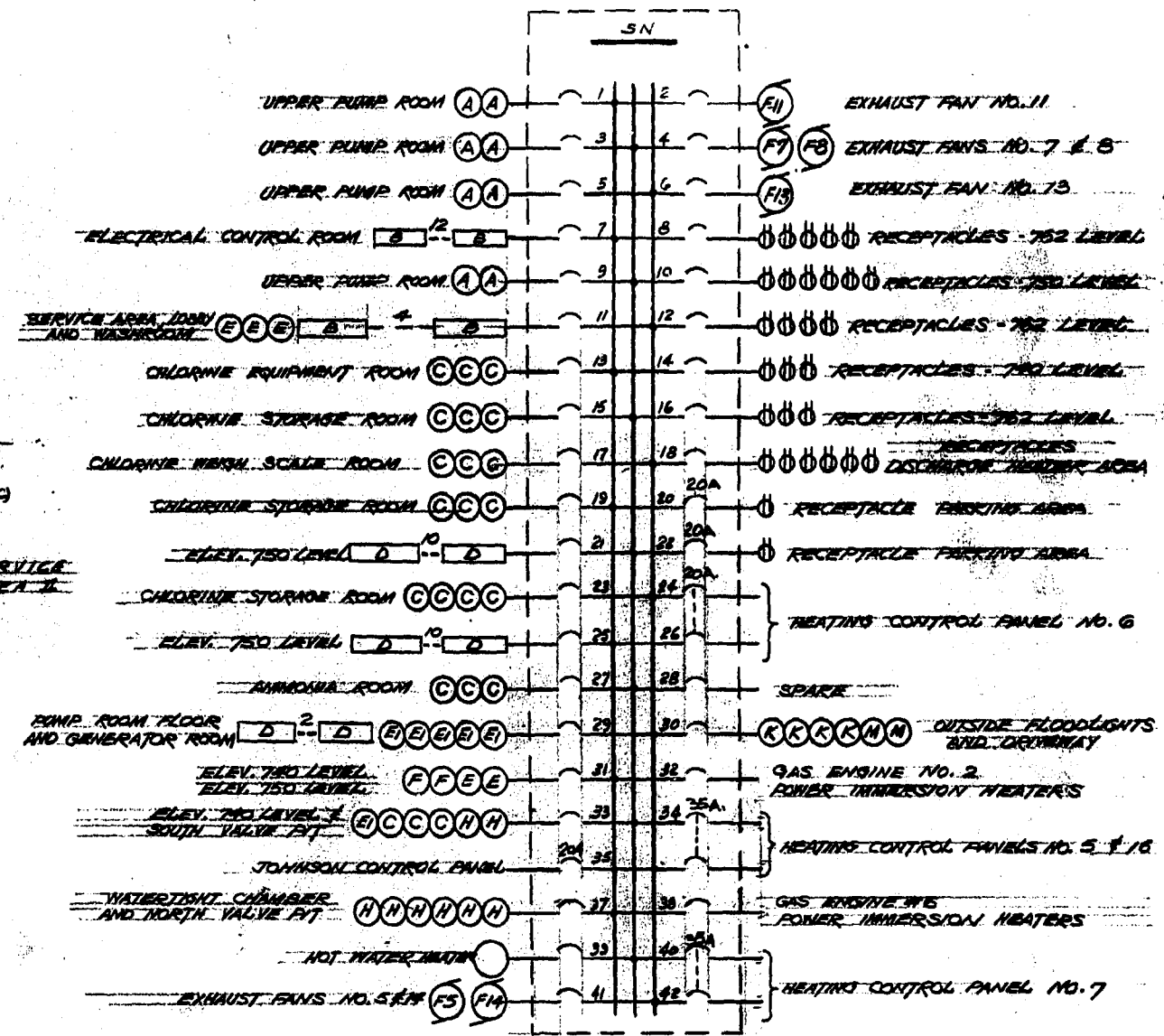
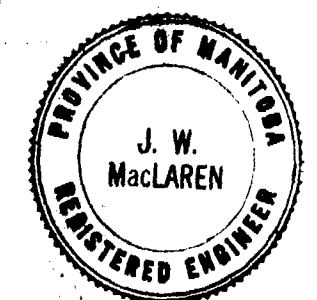
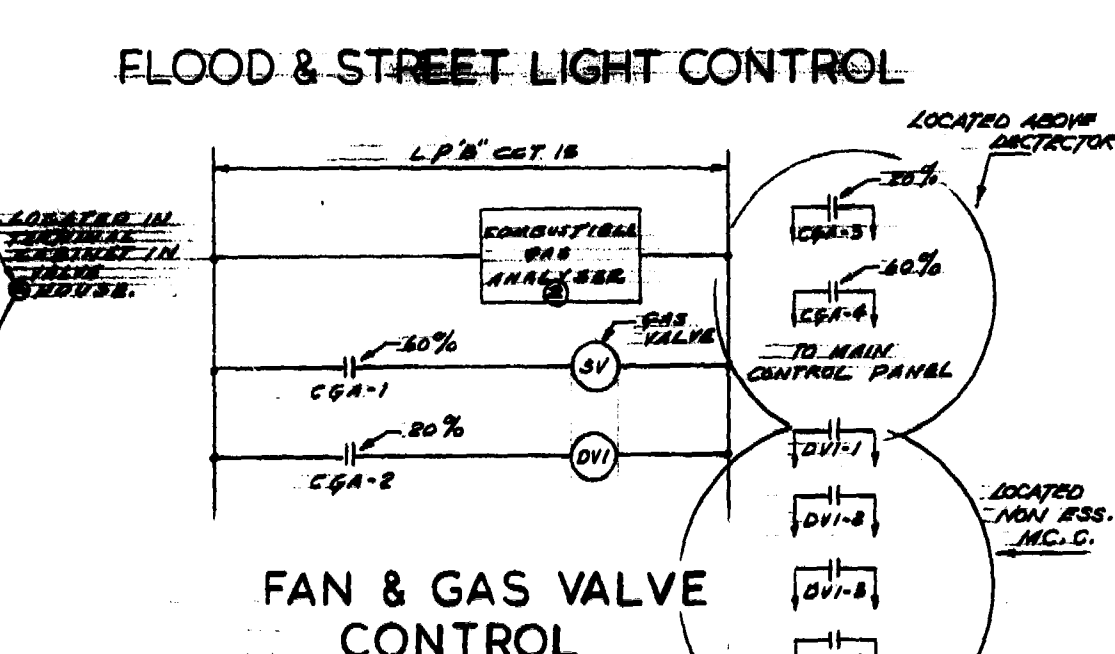
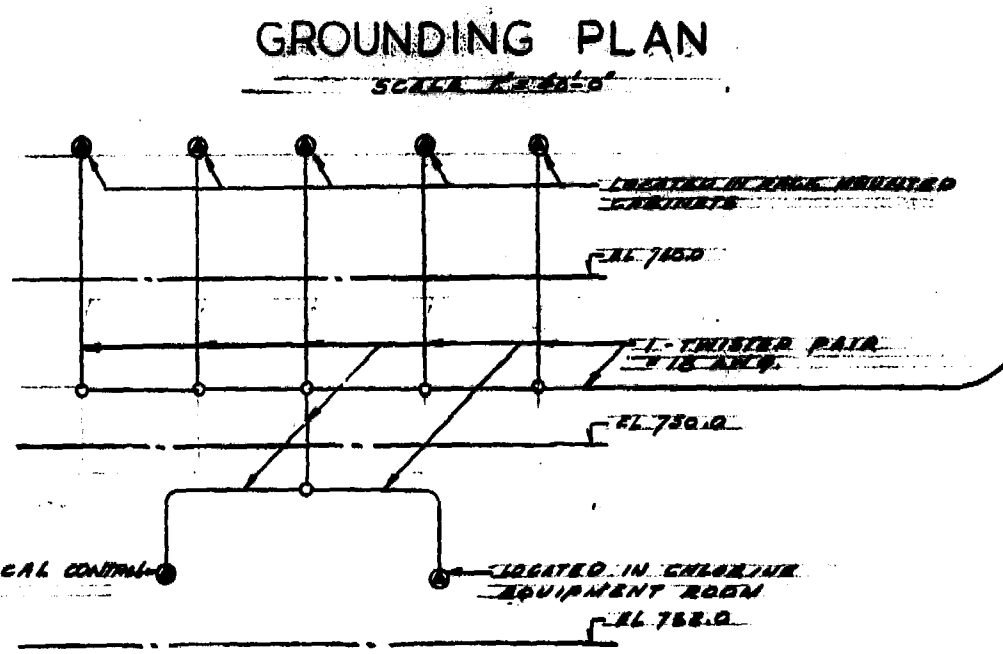
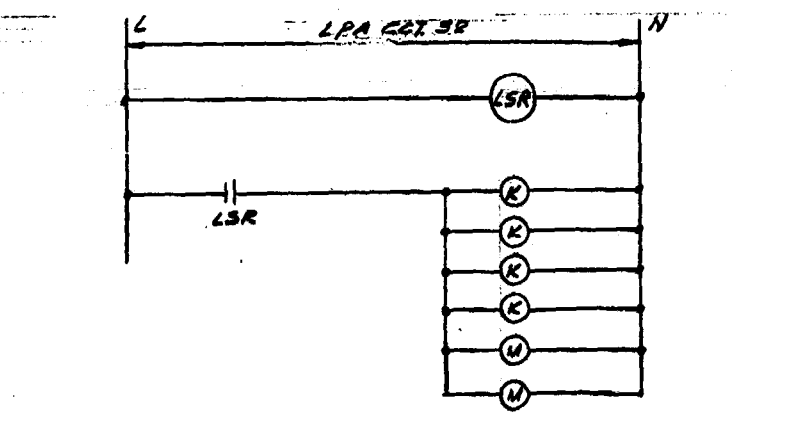
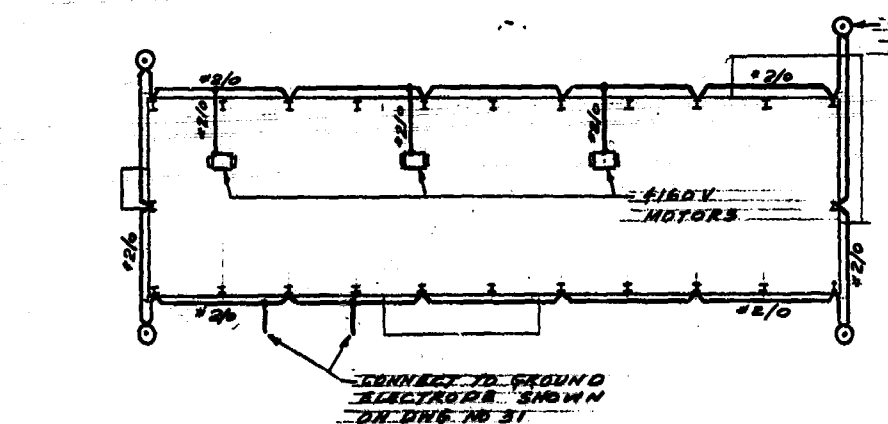


LIGHTING ABOVE ELEV. 762.0
 SCALE 1/8" = 1'-0"



LIGHTING FIXTURE SCHEDULE				
TYPE	DESCRIPTION	CAT. No.	WATTAGE	MOUNTING HEIGHT ABOVE FLOOR OR PLATFORM
A	RECESSED H/BAY MERCURY VAPOR	HOLOPHANE R 620 XL	400W	PUMP AREA - 44'-0"
B	RECESSED TROFFER WITH ACRYLIC ALABRICO LENS No. 2	ELECTROLITE XLA-32-24B	2-70W	ELECTRICAL & CONTROL RM. - 12'-0" WASHROOM - 10'-0" VESTIBULE - 10'-0" LOBBY - 10'-0"
C	INDUSTRIAL VAPORLIGHT LUMINAIRE	HOLOPHANE QX62B	300W	CHLORINE EQUIP. - 18'-0" CHLORINE STOR. - 18'-0" CHLORINE SCALES - 18'-0" AMMONIA RM. - 18'-0"
D	INDUSTRIAL FLOORESCENT	ELECTROKOR KYA-42-85	2-70W	MESSAGING - 10'-0" GENERATOR ROOM - 10'-0"
E	INDUSTRIAL-OUTDOOR LUMINAIRE	HOLOPHANE SBT	200W	SERVICE AREA - 12'-0" PUMP AREA - 3'-0"
E1	OUTDOOR UNIT	HOLOPHANE 41R	150W	
E2	OUTDOOR UNIT	HOLOPHANE 420	200W	
F	INDUSTRIAL LOBBY	HOLOPHANE 622 XL	300W	PUMP AREA (BUSH WALK) - 10'-6"
H	INDUSTRIAL UNIT	CRUZE-HINDS KYA 20-21	200W	WISNARQS HEADER AREA - 7'-6"
J	INDUSTRIAL LOBBY	HOLOPHANE 625 XL	300W	STAIR CASE I - MOUNT 4'-0" BELOW CEILING STAIR CASE II - "
K	HEAVY DUTY SODIUM FLOODLIGHT	GRUZE HINDS SVF 200 P	200W	MOUNT ON CONCRETE PLINTH WITH WEATHERPROOF JUNCTION BOX
L	RECESSED INCANDESCENT	HOLOPHANE P-72B	150W	SERVICE AREA II - 12'-6"
M	STREET LIGHT LUMINAIRE WITH INTEGRAL BALLAST	C.P.E. 87340 85	175W	MOUNT ON 20'-0" ALUMINUM STANDARD GENERAL LIGHT DEVICES P & K DAVID CAT. No. 071222-322
N	WARNING LIGHT - 1 WITH RED & 1 WITH AMBER LENS	GRUZE HINDS NL 25	60W TYPE 421 LAMP	MOUNT OVER ENTRANCE AS INDICATED ON DWG
P	OUTDOOR ENTRANCE FIXTURE	WAKE FIELD 622 A-XI	2-75W	CEILING MOUNTED WITH PROVISION TO RECEIVE 1/2" CONDUIT IN SIDE



REVISED AS BUILT JUNE - 1965

THE METROPOLITAN CORPORATION OF GREATER WINNIPEG
 WATERWORKS AND WASTE DISPOSAL DIVISION

METRO EAST PUMPING STATION AND RESERVOIR

CONTRACT A - PUMPING STATION ELECTRICAL-LIGHTING PLAN ABOVE ELEVATION 762.0 AND DETAILS

APPROVED: *J. W. MacLaren*
 J. W. MacLAREN
 PROFESSIONAL ENGINEER
 WINNIPEG, MANITOBA

DESIGNED BY: *[Signature]*
 CHECKED BY: *[Signature]*
 DRAWN BY: *[Signature]*
 SUPERVISOR: *[Signature]*

DATE: JUNE 22, 1962
 SCALE: 1/8" = 1'-0"
 SHEET NO. 32 OF 31

ME-39