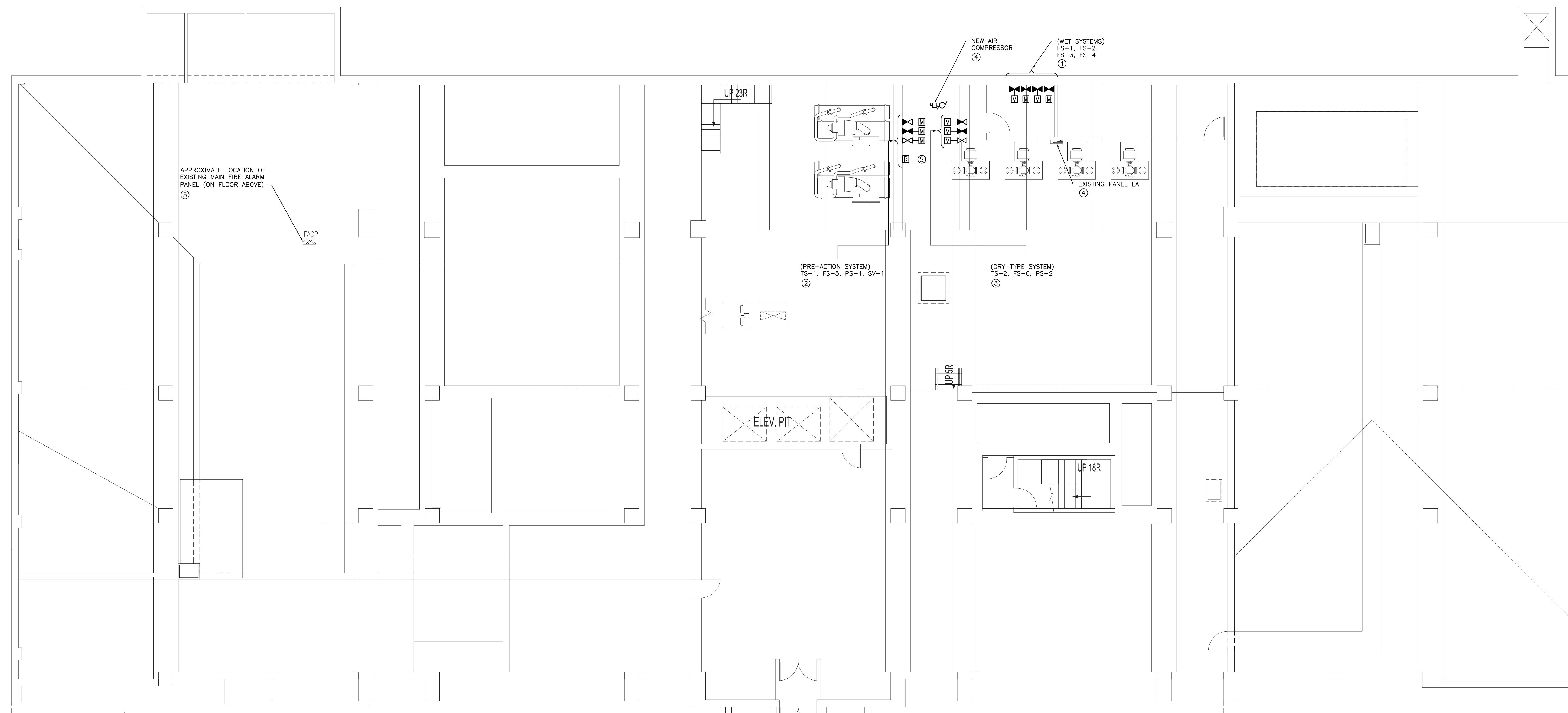


GENERAL NOTES

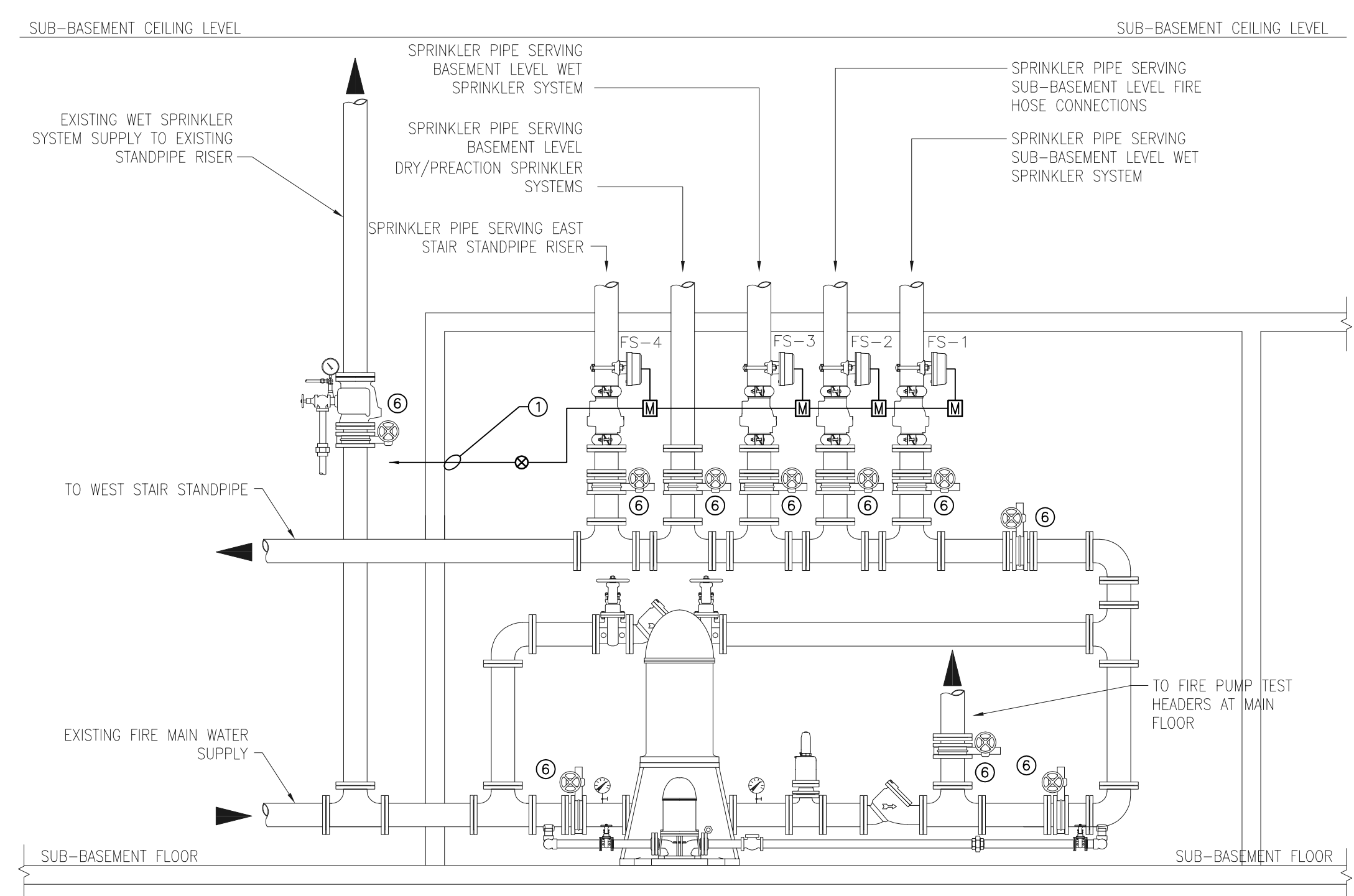
- A. APPROXIMATE LOCATIONS ARE SHOWN FOR ALL NEW AND EXISTING FIRE ALARM DEVICES. COORDINATE NEW DEVICE LOCATIONS ON SITE WITH THE CONTRACTOR PRIOR TO INSTALLATION.
- B. ALL NEW DEVICES IN THIS INSTALLATION SHALL BE APPROVED FOR USE WITH THE EXISTING FIRE ALARM PANEL. EXISTING FIRE ALARM SYSTEM MANUFACTURER IS CHUBB/EDWARDS.
- C. DOWNTIME OF THE FIRE ALARM SYSTEM SHALL BE KEPT TO AN ABSOLUTE MINIMUM. FIRE WATCH SERVICES SHALL BE EMPLOYED FOR THE PERIOD DURING WHICH THE FIRE ALARM SYSTEM IS PARTIALLY OR FULLY DISABLED. THE ELECTRICAL DIVISION IS RESPONSIBLE TO EMPLOY FIRE WATCH SERVICES AND PAY ALL FIRE WATCH FEES. COORDINATE FIRE WATCH WITH THE FIRE DEPARTMENT AND THE CITY.
- D. ALL NEW DEVICE REFERENCES/TAG NUMBERS SHALL BE CONFIRMED AT THE TIME OF INSTALLATION WITH FIRE ALARM MANUFACTURER AND CONTRACT ADMINISTRATOR PRIOR TO PRODUCING THE REQUIRED LAMCOCIDS.
- E. ONCE THE INSTALLATION IS COMPLETE, ALL AFFECTED FIRE ALARM ZONES SHALL BE COMPLETELY RE-VERIFIED AND A NEW CERTIFICATE OF VERIFICATION (PARTIAL) SHALL BE PROVIDED.

KEY NOTES

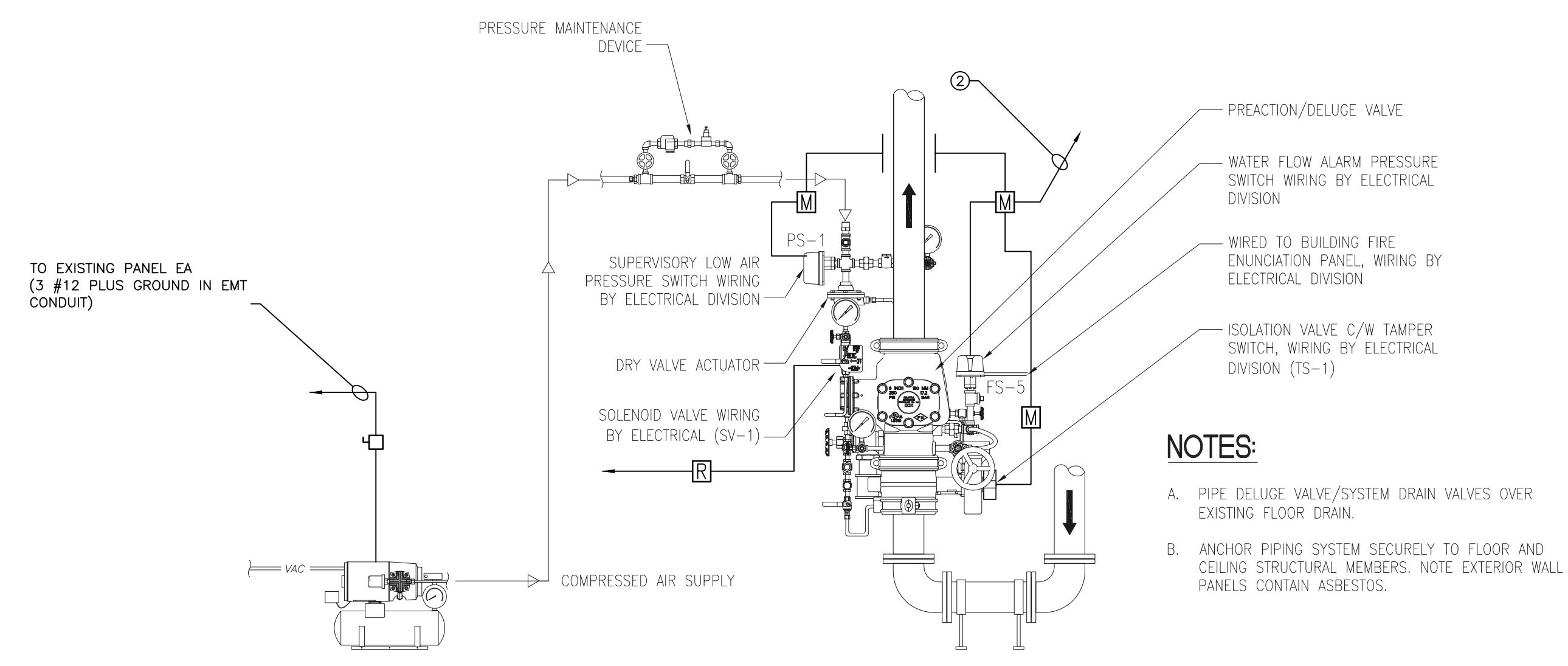
- 1. WIRE AND CONNECT NEW FIRE ALARM DEVICES WITH THE WET-TYPE SPRINKLER SYSTEM TO THE NEAREST ADDRESSABLE LOOP SERVING AREA WITH CAPACITY.
- 2. WIRE AND CONNECT NEW FIRE ALARM DEVICES WITH THE PRE-ACTION SPRINKLER SYSTEM TO THE NEAREST ADDRESSABLE LOOP SERVING AREA WITH CAPACITY.
- 3. WIRE AND CONNECT NEW FIRE ALARM DEVICES WITH THE DRY-TYPE SPRINKLER SYSTEM TO THE NEAREST ADDRESSABLE LOOP SERVING AREA WITH CAPACITY.
- 4. WIRE AND CONNECT NEW AIR COMPRESSOR TO PANEL EA WITH 3 #12 PLUS GROUND IN EMT CONDUIT. PROVIDE AND INSTALL A NEW T&A-3P BREAKER IN PANEL EA. NEW BREAKERS SHALL MATCH EXISTING IN ALL RESPECTS. WIRE AND CONNECT START/STOP CIRCUIT AS PER DETAIL 3 ON THIS DRAWING.
- 5. EXISTING FIRE ALARM PANEL TO REMAIN.
- 6. TAMPER SWITCHES ARE EXISTING.



1 NEW SUB-BASEMENT SPRINKLER LAYOUT - ELECTRICAL
E1.1 SCALE: 1:100



2 FIRE PUMP ROOM SECTION
E1.1 SCALE: NTS



3 PRE-ACTION DETAIL
E1.1 SCALE: NTS

NOTES:

- A. PIPE DELUGE VALVE/SYSTEM DRAIN VALVES OVER EXISTING FLOOR DRAIN.
- B. ANCHOR PIPING SYSTEM SECURELY TO FLOOR AND CEILING STRUCTURAL MEMBERS. NOTE EXTERIOR WALL PANELS CONTAIN ASBESTOS.

2	RE-ISSUED FOR BID OPPORTUNITY	GW 07/12
1	ISSUED FOR BID OPPORTUNITY	GW 07/12
NO.	REVISION/DESCRIPTION	BY DATE



DRAWN BY	KAM	CHECKED BY	GW	APPROVED	CJM
DATE	2/20/09	USER APPROVAL			

CITY OF WINNIPEG
PLANNING, PROPERTY & DEVELOPMENT DEPARTMENT
CIVIC ACCOMMODATIONS DIVISION
300 - 65 GARRY ST. R3C 4K4

PROJECT
CITY OF WINNIPEG
BASEMENT & SUB-BASEMENT FIRE SUPPRESSION UPGRADE
510 MAIN STREET
SHEET TITLE
NEW SUB-BASEMENT SPRINKLER LAYOUT ELECTRICAL



SMS Engineering Ltd. Consulting Engineers
770 Bradford Street Winnipeg MB Canada R3H 0G3
Telephone 204-778-0291 Fax 204-772-2193
sms@smseng.com

SCALE	PROJECT NO.	SHEET NO.
1:100	501-2012	E1.1