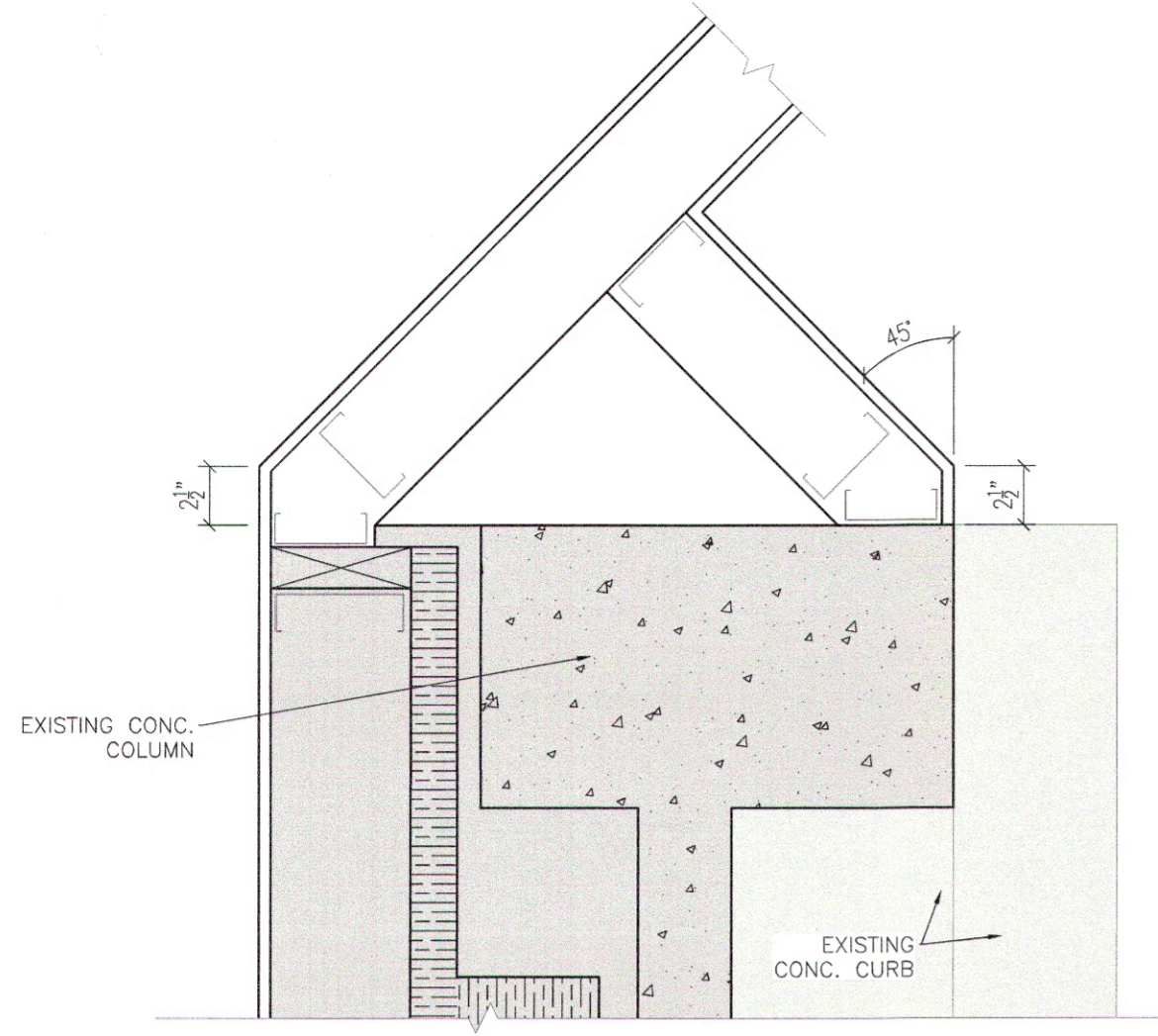
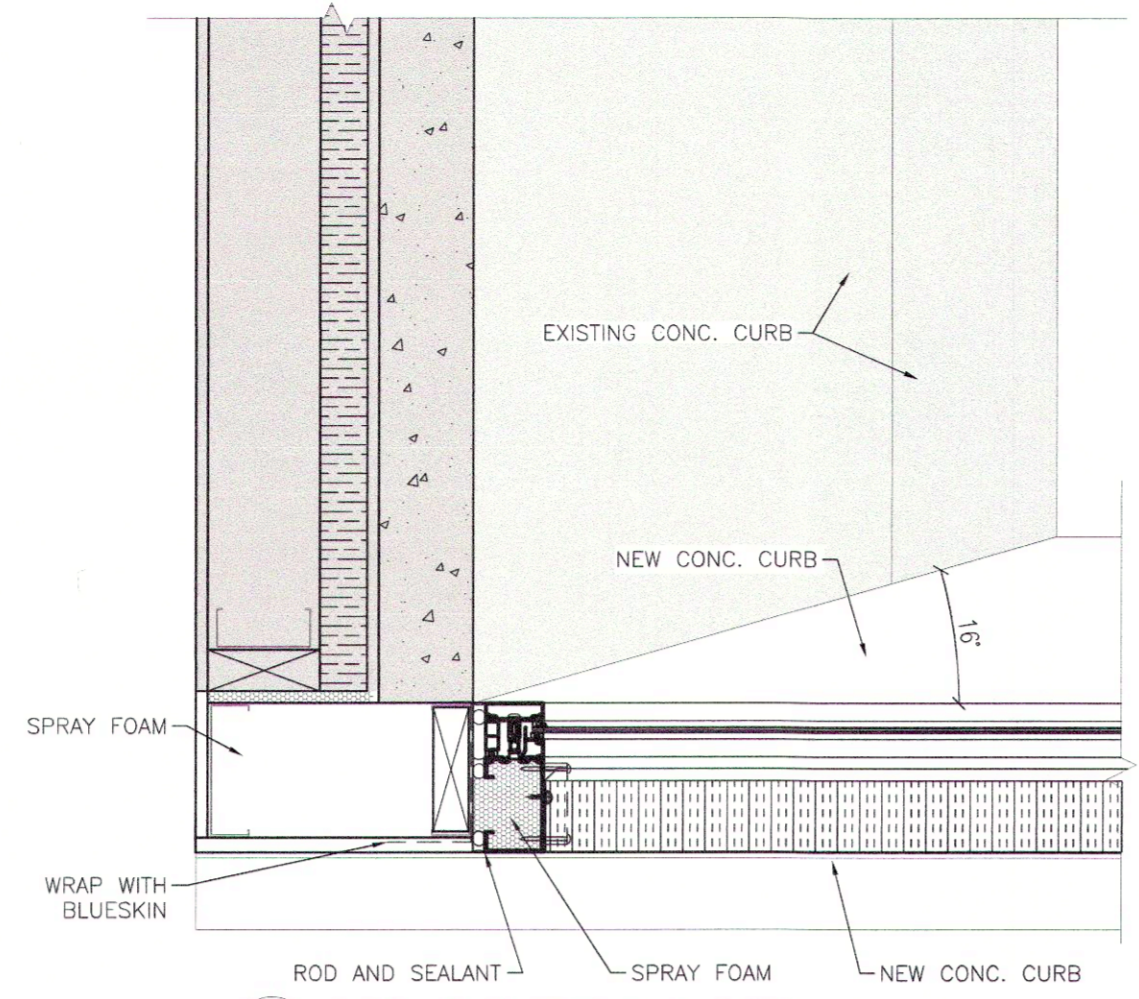


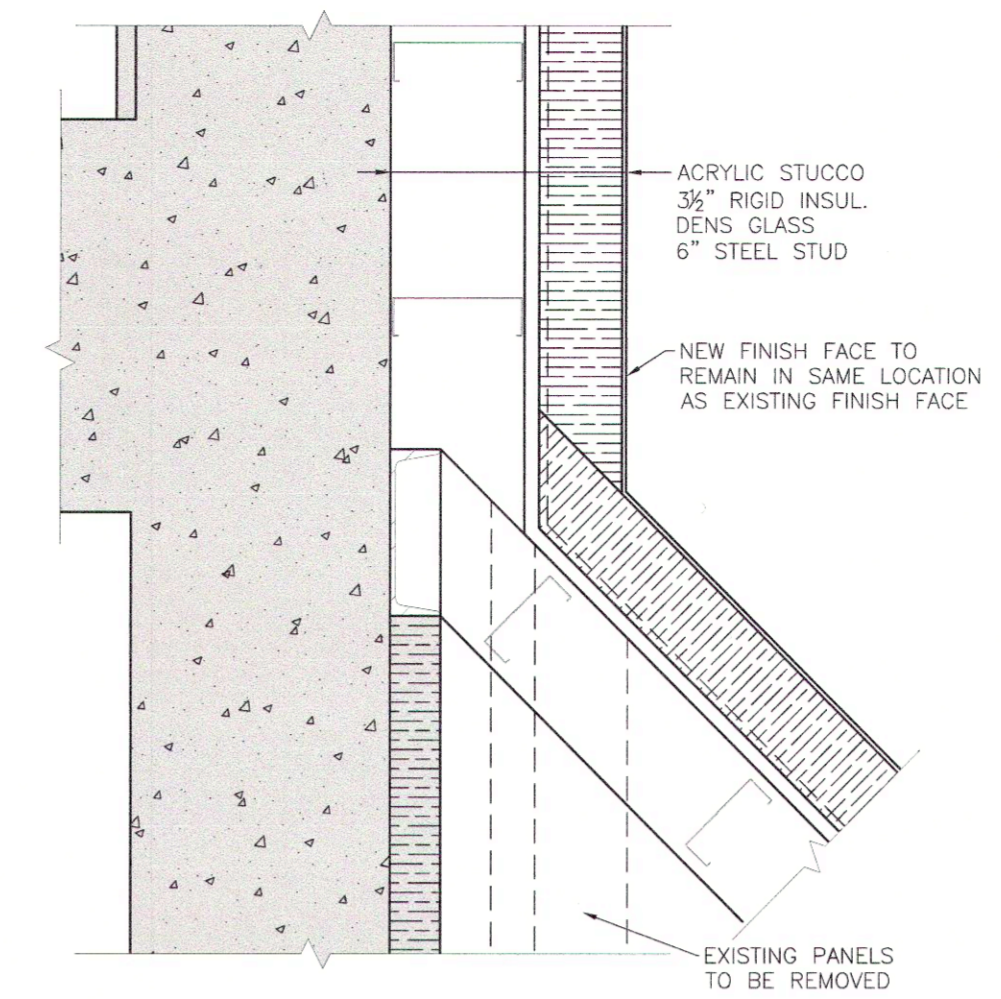
NOTE:
EXISTING CONSTRUCTION TO REMAIN
HAS BEEN SHOWN SHADED



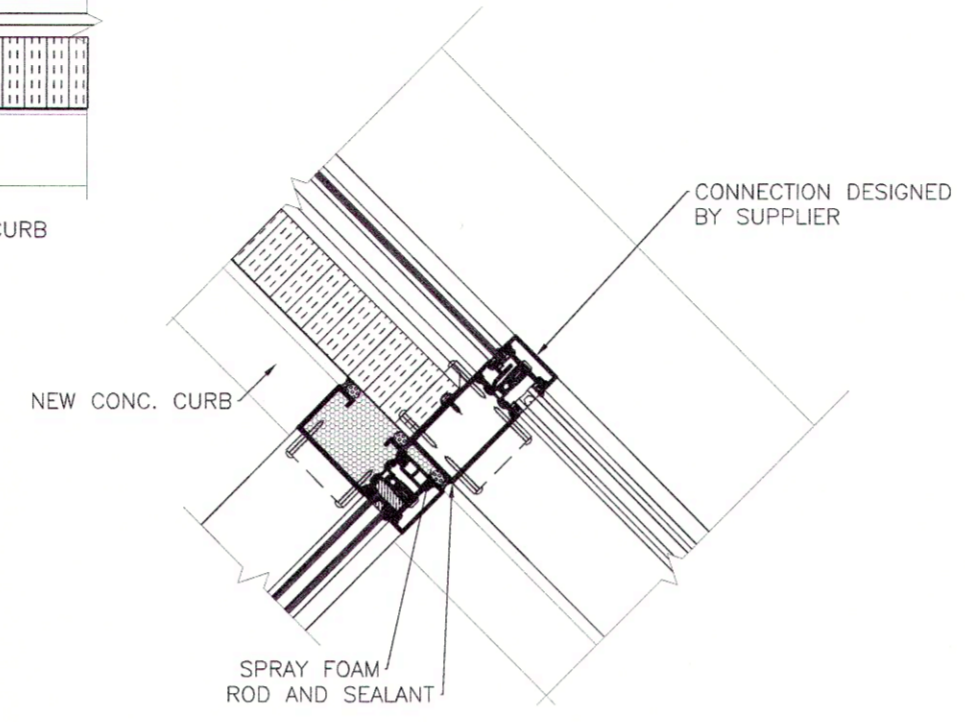
1 VESTIBULE PARTITION TO COLUMN DETAIL
1/2" = 1'-0"



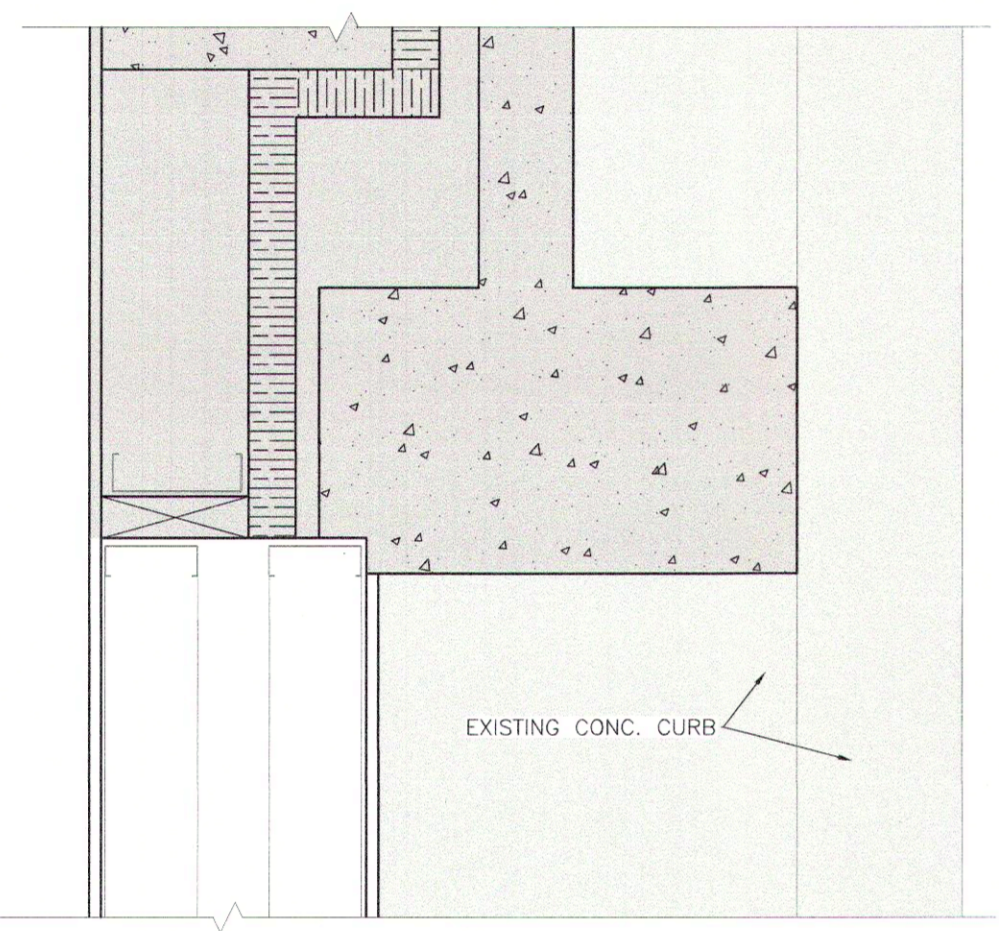
2 VESTIBULE EXISTING WALL DETAIL 1
1/2" = 1'-0"



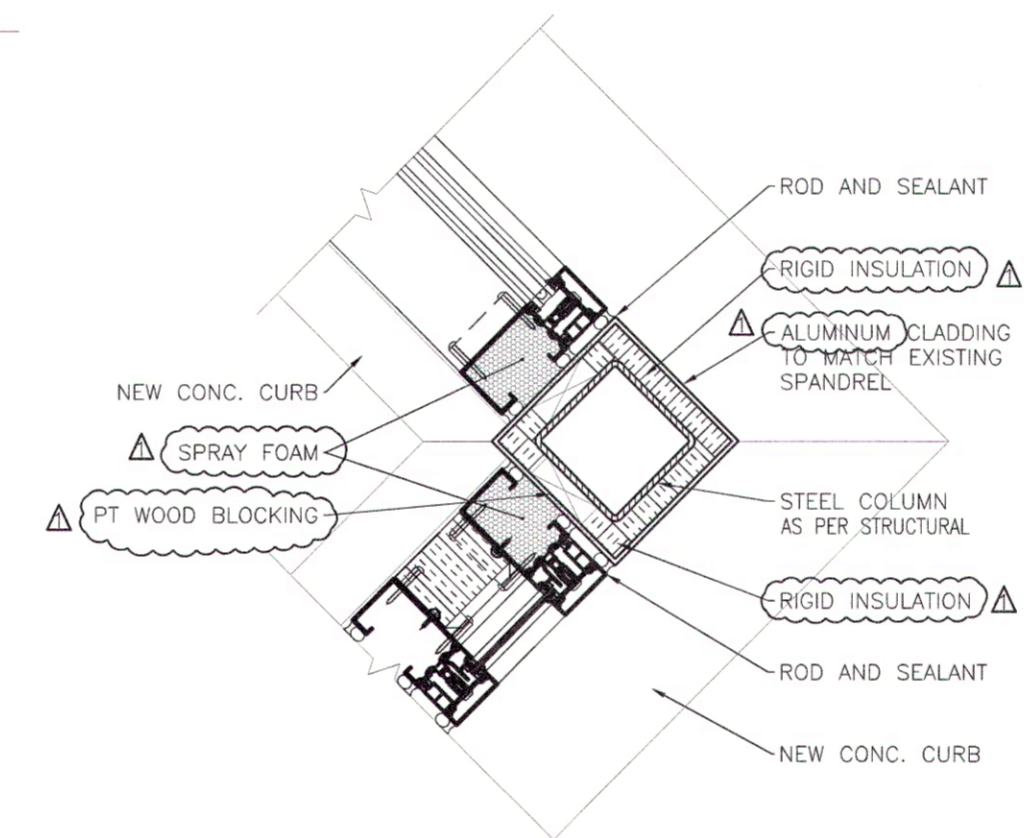
3 PARAPET TO AGGREGATE PANEL DETAIL
1/2" = 1'-0"



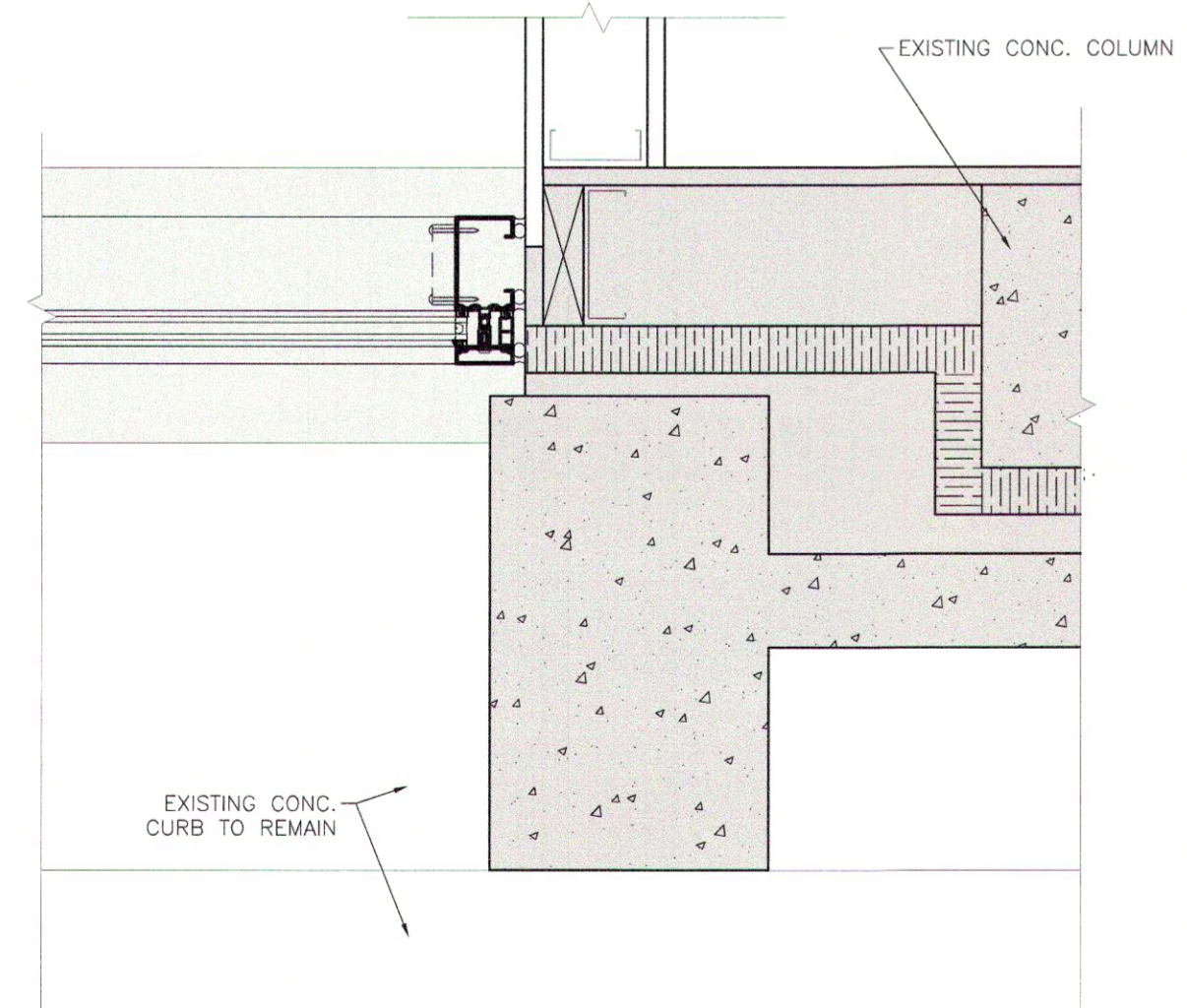
4 VESTIBULE PARTITION DETAIL
1/2" = 1'-0"



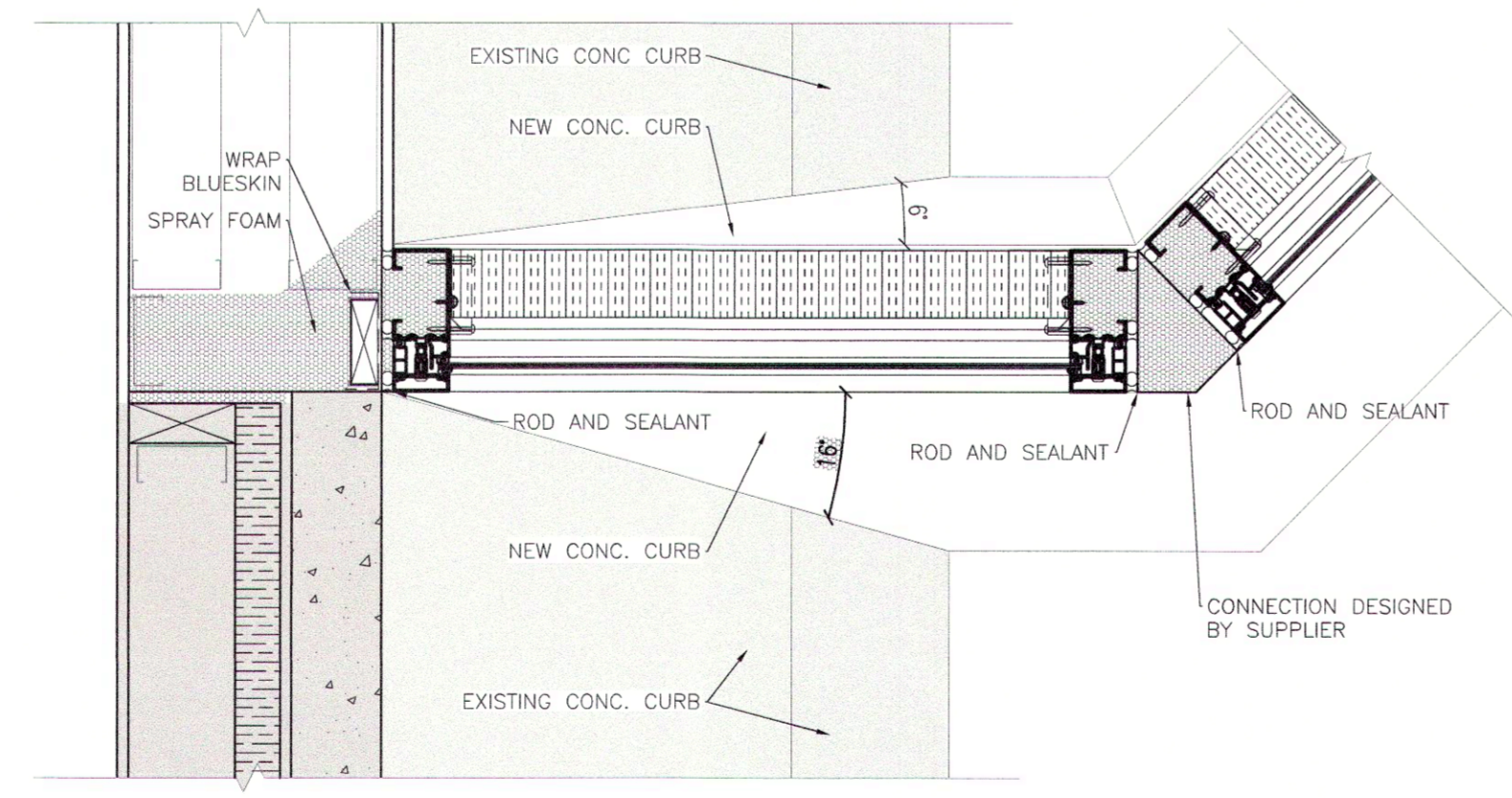
5 NEW PARTITION TO COLUMN DETAIL
1/2" = 1'-0"



6 VESTIBULE COLUMN DETAIL
1/2" = 1'-0"



7 NEW PARTITION EXISTING WALL DETAIL
1/2" = 1'-0"



8 VESTIBULE EXISTING WALL DETAIL 2
1/2" = 1'-0"

| NO. | REVISIONS | BY | DATE |
|-----|------------------------------|--------|----------------------|
| 0 | REVISION 1 ISSUED FOR TENDER | DB JJ | 12.08.29 12.07.20 |
| | | VRANDY | |

The contractor shall check all dimensions and other data from the job and report any discrepancies to the architects before proceeding. This drawing and the information on it, is proprietary and confidential. Reproduction of any sort is prohibited without the written approval of MMP Architects Inc.

PROJECT TITLE
Southwest Entrance Development
Millennium Library, 251 Donald Street
251 Donald Street, Winnipeg, MB
BID OFF NUMBER: 517-2012

DRAWING TITLE
Details



300 - 214 McDermot Avenue, Winnipeg Manitoba R3B 0S3
Tel (204) 956-0530 Fax (204) 943-5704 www.mmparchitects.com

| APPROVED | CHECKED | DRAWN BY |
|----------|-----------|----------|
| CD | CD | DP |
| SCALE | DATE | FILE NO. |
| AS NOTED | July 2012 | 2012-19 |

DRAWING NUMBER
A502-R1

REVISION NUMBER
1

CAD FILE: 2012-19-002 Wall Section and Details.dwg
DRAWER NO.: