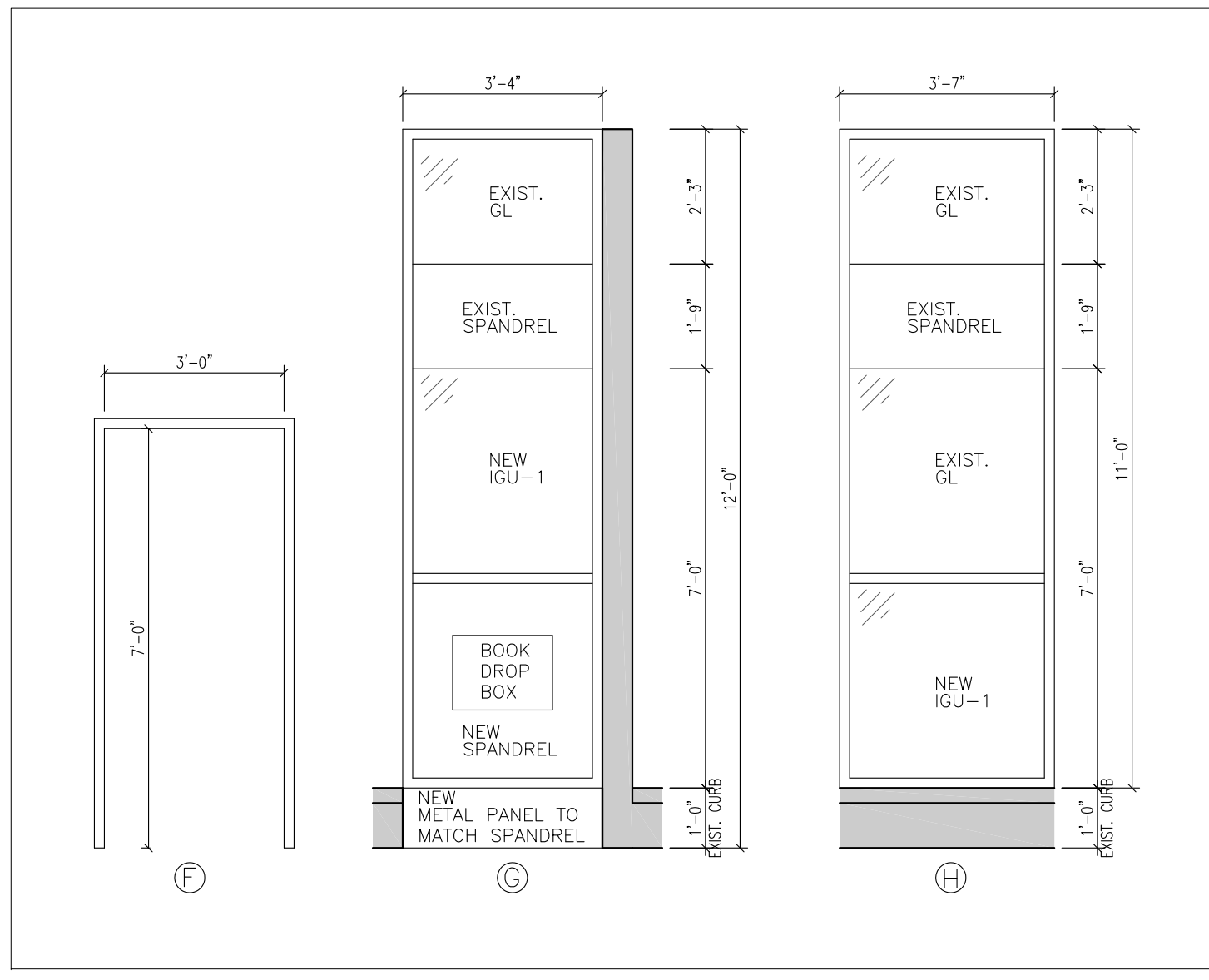
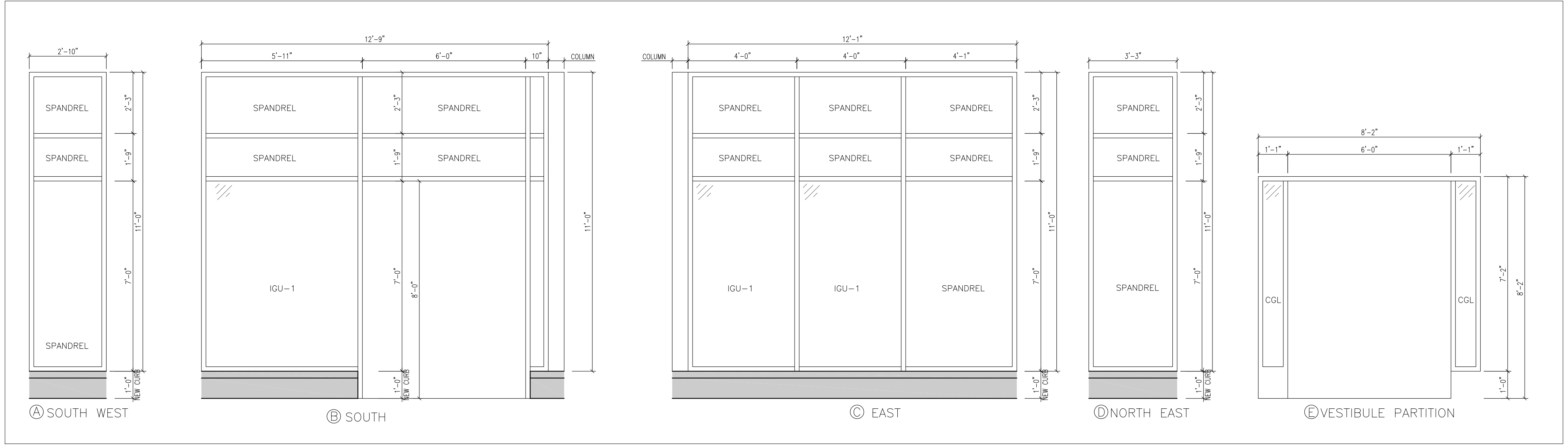
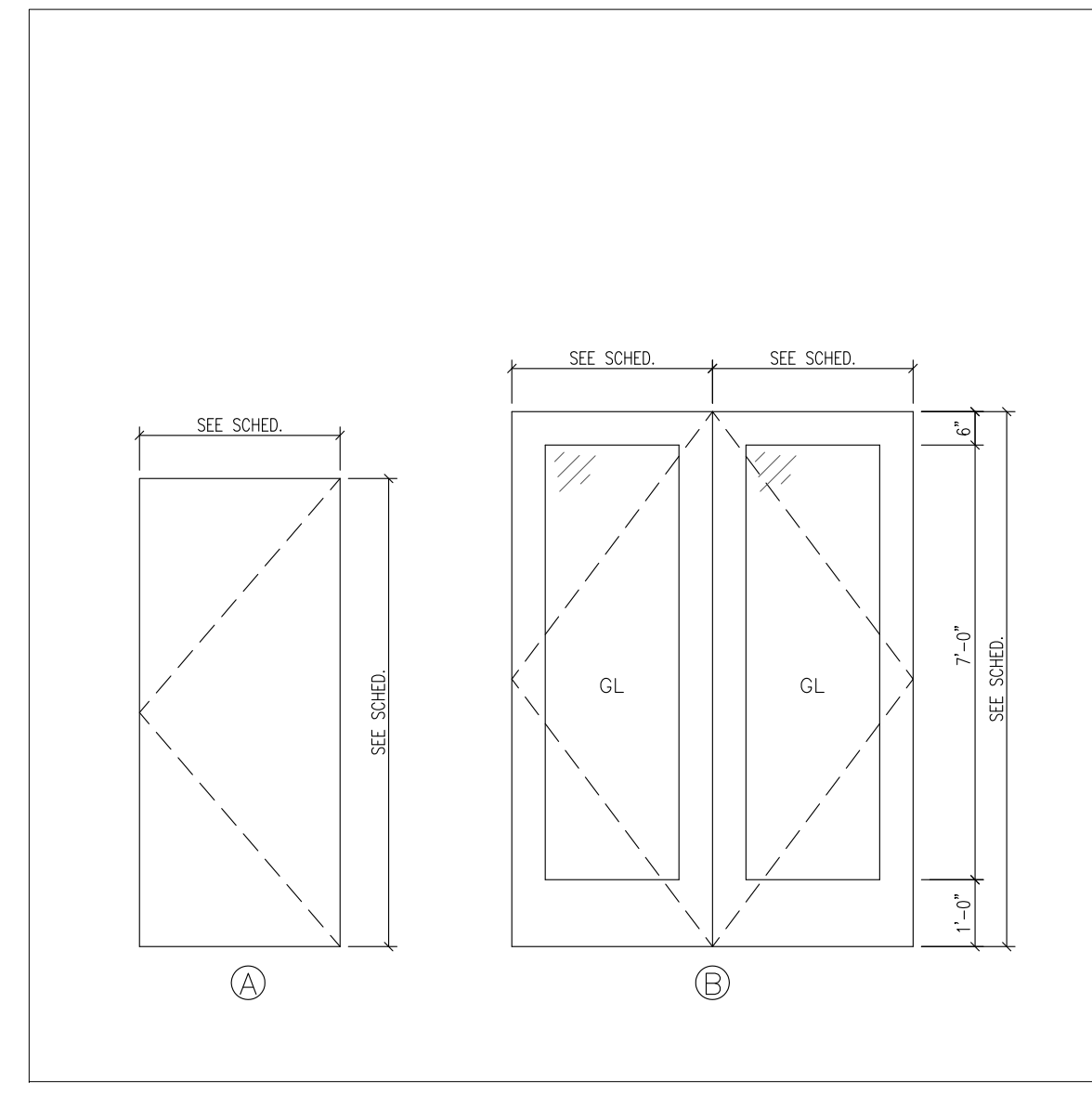


DOOR AND FRAME SCHEDULE																	
NO.	LOCATION	DOOR			ELEV.	MAT.	CORE	FIN.	GLAZ.	LOUVER		FRAME			HARDWARE		NOTES
		WD	HGT	THK						WD	HGT	ELEV.	MAT.	FIN.	SET NO.	RATING	
01	104	3'-0"	7'-0"	1 3/4"	A	X	X	PNT	NO	NA	NA	F	HM	PNT	X	NA	REUSE/RELOCATE EXISTING DOOR. PREP TO ACCEPT NEW PAINT FINISH. PAINT PER SPEC (NEW FRAME). REVISE EXIST. HARDWARE
02	101	3'-0"	8'-0"	1 3/4"	B	AL.	INSUL.	AN	IGU-1	NA	NA	B	ALUM	XX	1	NA	
03	101	3'-0"	8'-0"	1 3/4"	B	AL.	HC	AN	CGL	NA	NA	E	ALUM	XX	2	NA	

X = EXISTING
XX = TO MATCH "BRONZE" FINISH ON EXISTING BASE BUILDING FRAMES



2 FRAME ELEVATION STYLES
1/8" 3/8" = 1'-0"



3 DOOR ELEVATION STYLES
1/8" 3/8" = 1'-0"

0	ISSUED FOR TENDER	JJ	12.07.20
NO.	REVISIONS	BY	YR/MN/DY

The contractor shall check all dimensions and other data from the job and report any discrepancies to the architects before proceeding. This drawing and the information on it, is proprietary and confidential. Reproduction of any sort is prohibited without the written approval of MMP Architects Inc.

PROJECT TITLE
Southwest Entrance Development
Millennium Library, 251 Donald Street
251 Donald Street, Winnipeg, MB
BID OFF NUMBER: 517-2012
DRAWING TITLE

Vestibule Roof Plan & Schedules



300 - 214 McDermot Avenue, Winnipeg Manitoba R3B 0S3
Tel (204) 956-0530 Fax (204) 943-5704 www.mmparchitects.com

APPROVED	CHECKED	DRAWN BY
CD	CD	DP
SCALE	DATE	FILE NO.
AS NOTED	July 2012	2012-19

DRAWING NUMBER	REVISION NUMBER
A103	0
CAD FILE: 2012-19-105 Vestibule Roof Plan.dwg	DRAWER NO. -

1 VESTIBULE ROOF PLAN
1/8" = 1'-0"