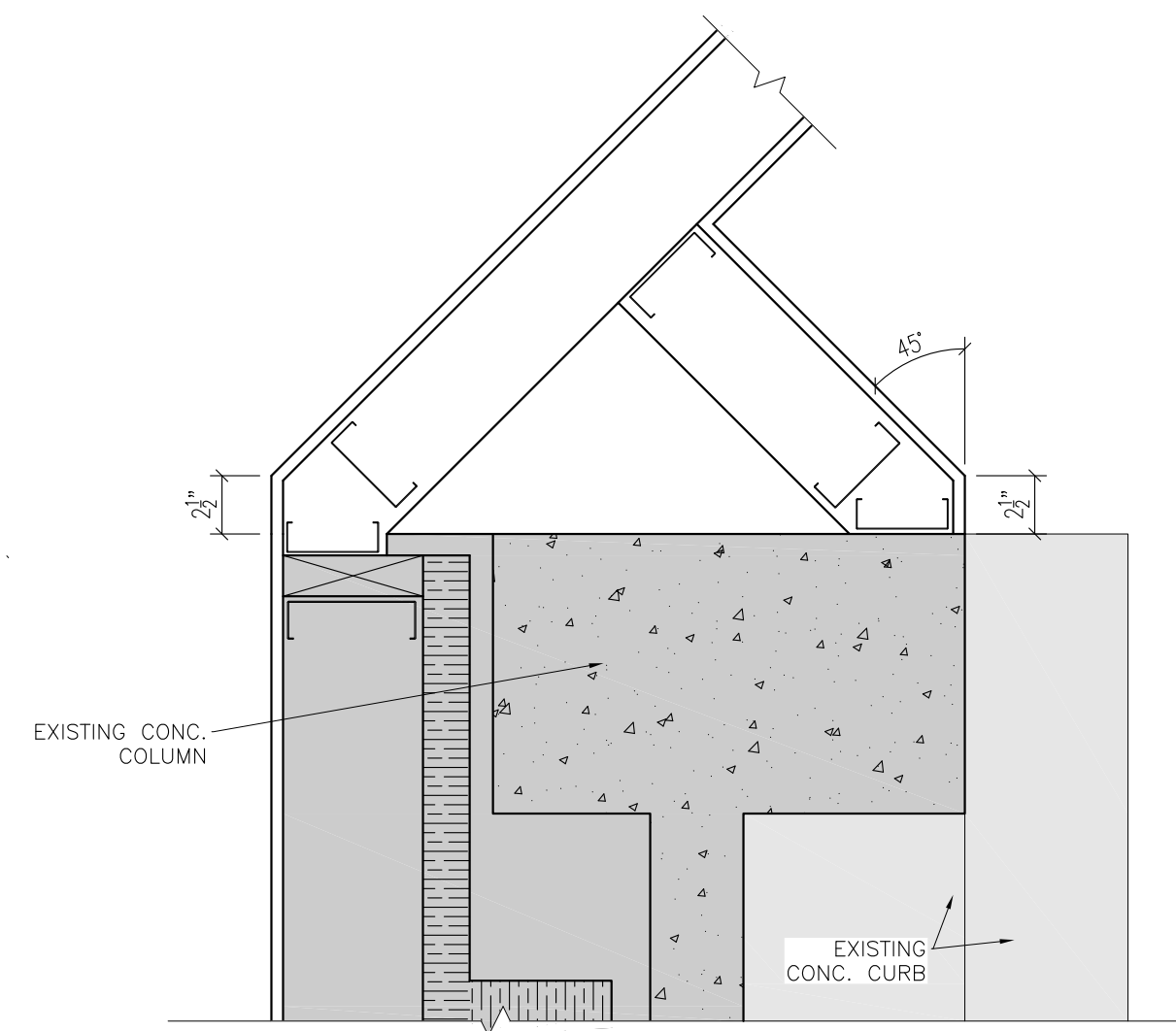
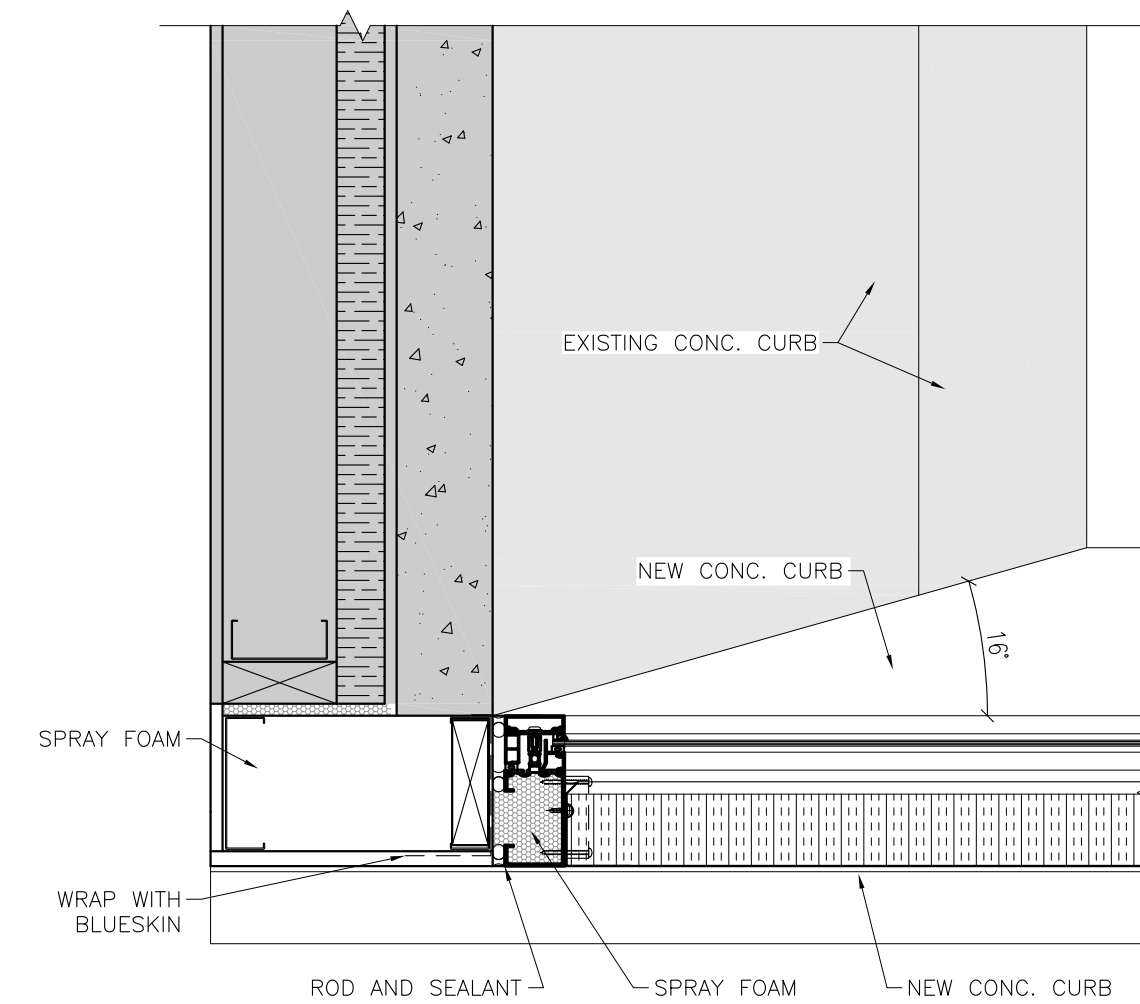


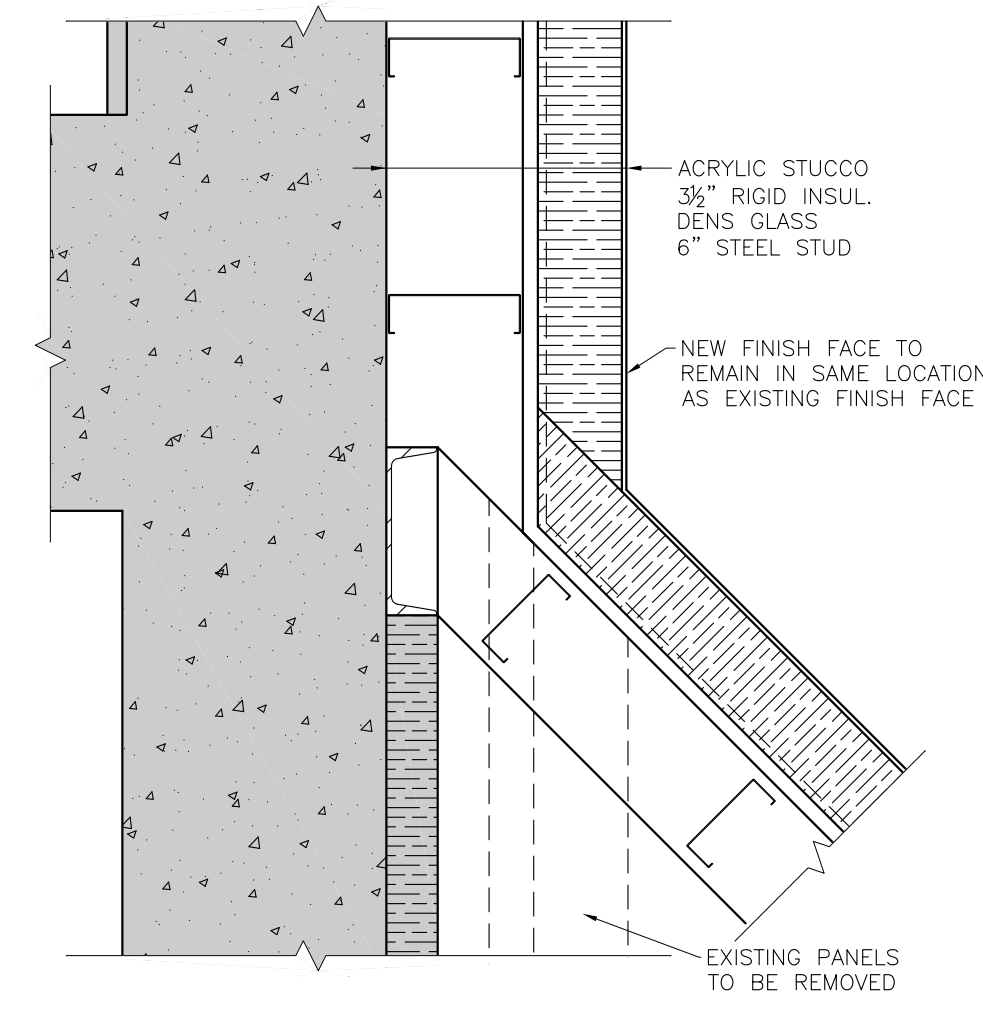
NOTE:
EXISTING CONSTRUCTION TO REMAIN
HAS BEEN SHOWN SHADED



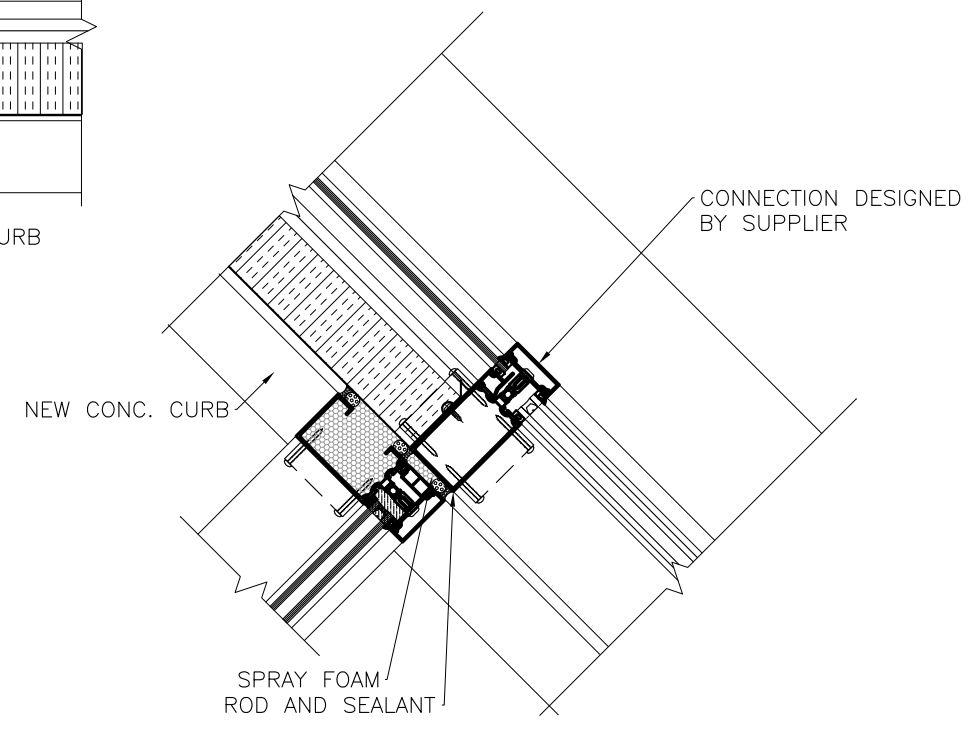
1 VESTIBULE PARTITION TO COLUMN DETAIL
WSP150/1 1/2" = 1'-0"



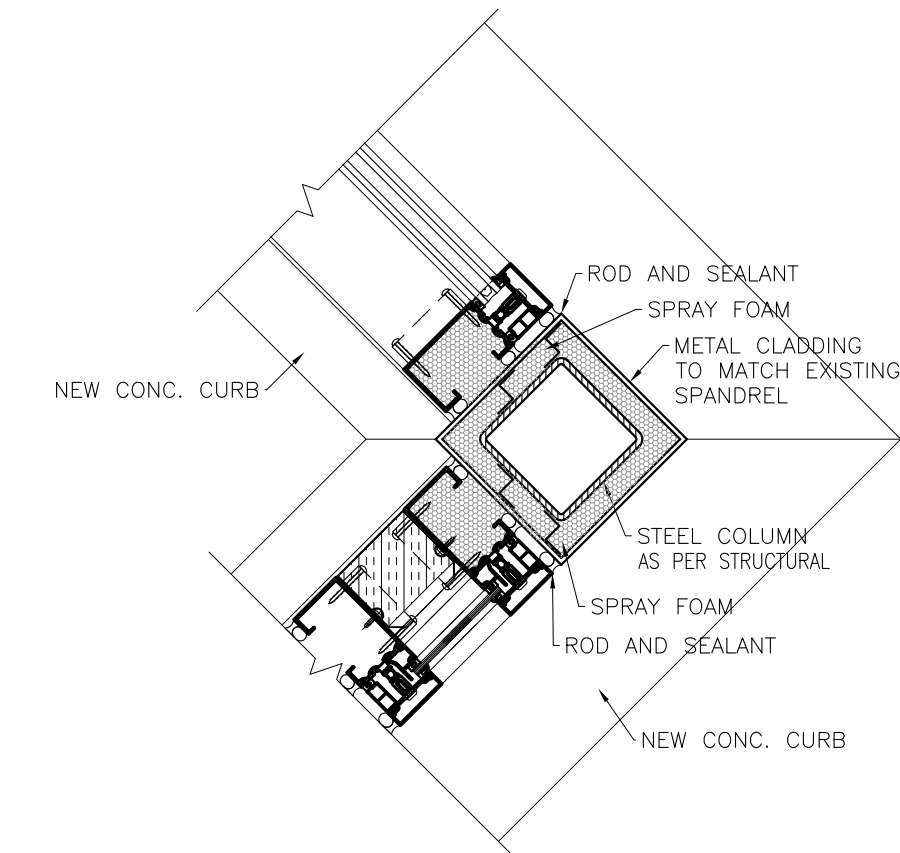
2 VESTIBULE EXISTING WALL DETAIL 1
WSP150/1 1/2" = 1'-0"



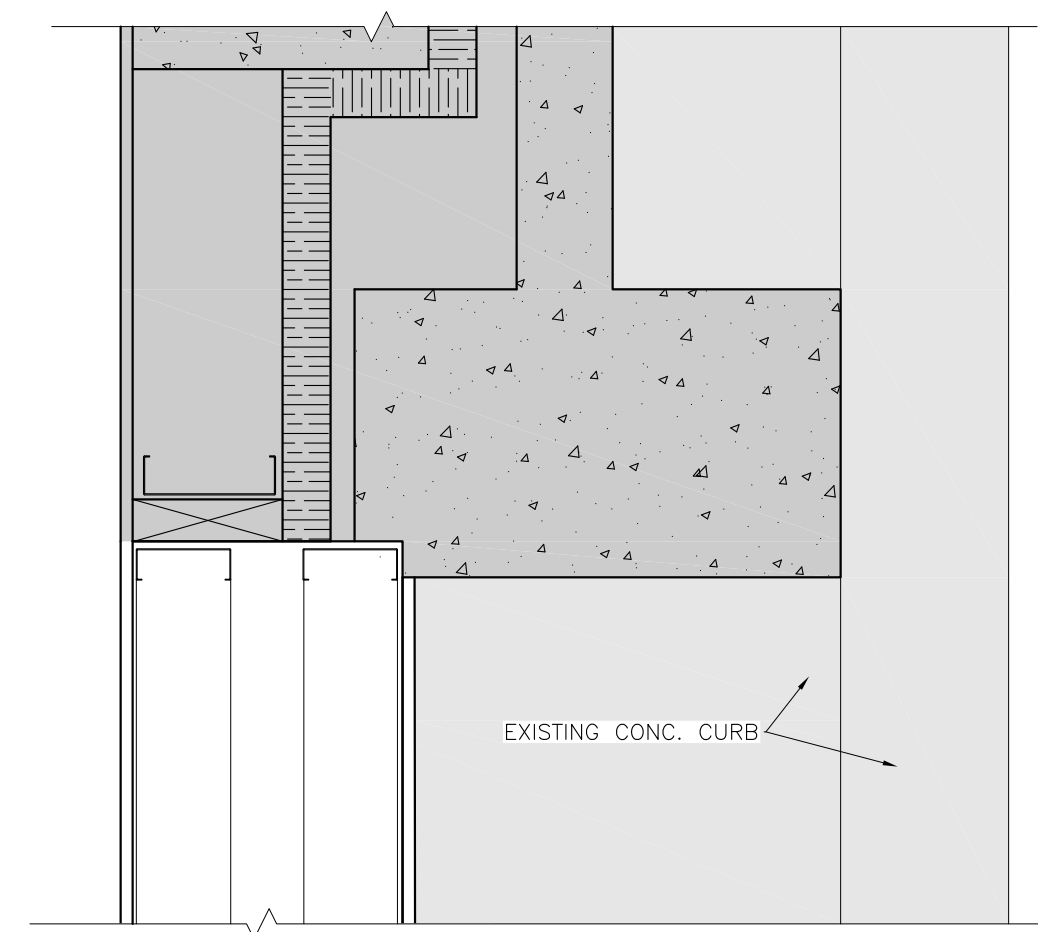
3 PARAPET TO AGGREGATE PANEL DETAIL
WSP150/1 1/2" = 1'-0"



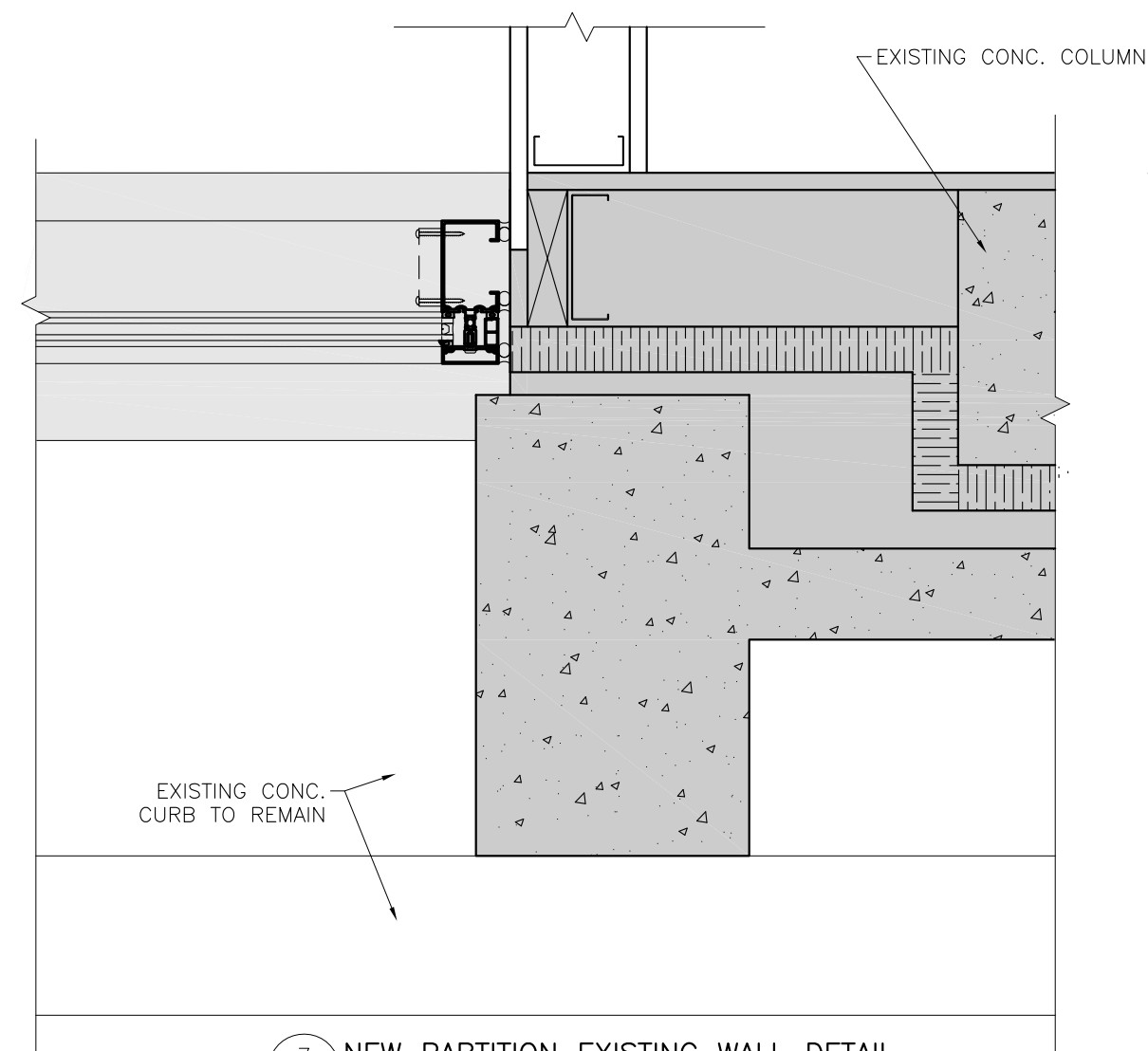
5 VESTIBULE PARTITION DETAIL
WSP150/1 1/2" = 1'-0"



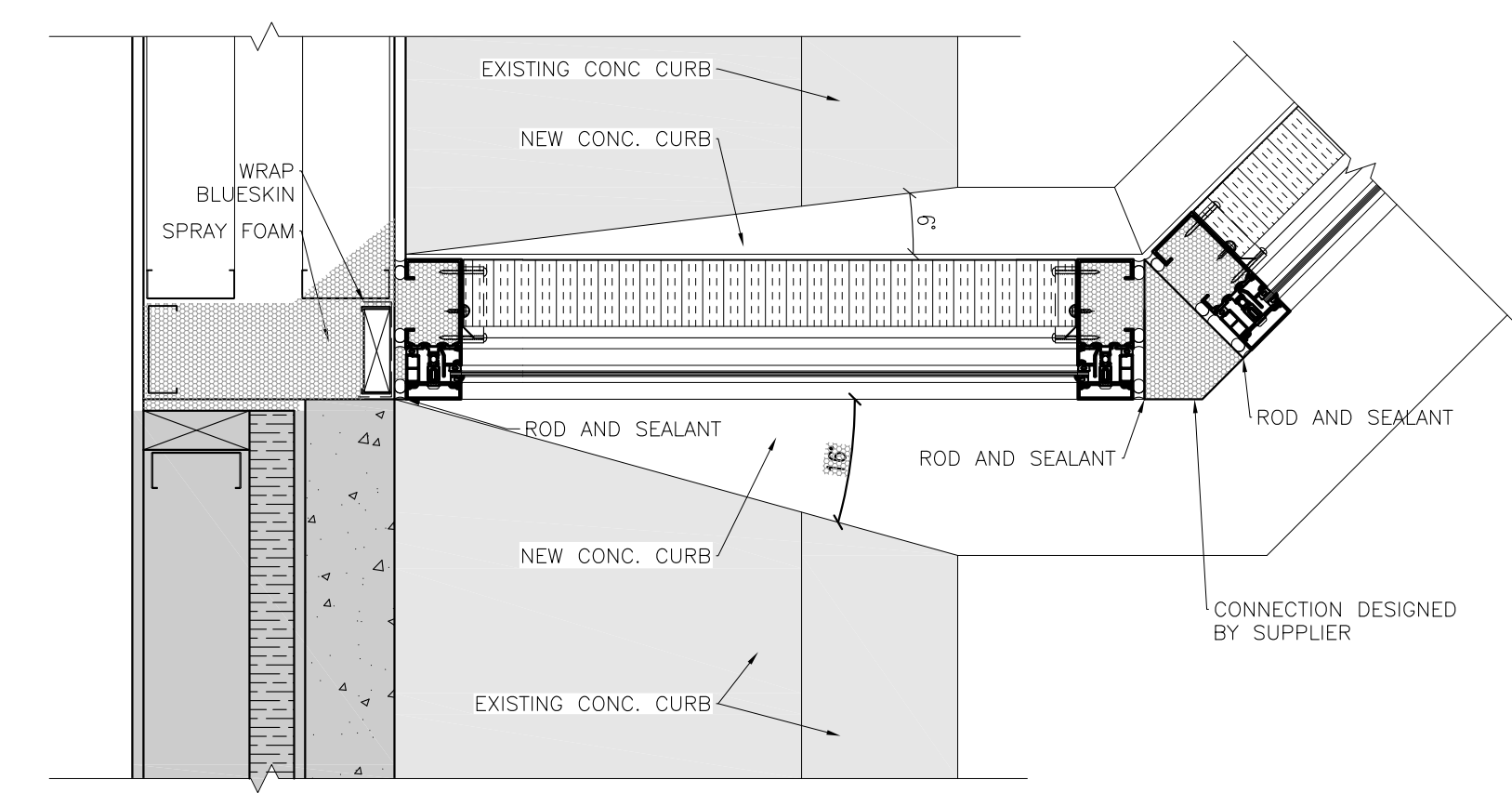
6 VESTIBULE COLUMN DETAIL
WSP150/1 1/2" = 1'-0"



4 NEW PARTITION TO COLUMN DETAIL
WSP150/1 1/2" = 1'-0"



7 NEW PARTITION EXISTING WALL DETAIL
WSP150/1 1/2" = 1'-0"



8 VESTIBULE EXISTING WALL DETAIL 2
WSP150/1 1/2" = 1'-0"

0	ISSUED FOR TENDER	JJ	12.07.20
NO.	REVISIONS	BY	YR.MN.DY

The contractor shall check all dimensions and other data from the job and report any discrepancies to the architects before proceeding. This drawing and the information on it, is proprietary and confidential. Reproduction of any sort is prohibited without the written approval of MMP Architects Inc.

PROJECT TITLE
Southwest Entrance Development
Millennium Library, 251 Donald Street
251 Donald Street, Winnipeg, MB

BID OFF NUMBER: 517-2012

DRAWING TITLE
Details



300 - 214 McDermot Avenue, Winnipeg Manitoba R3B 0S3
Tel (204) 956-0530 Fax (204) 943-5704 www.mmparchitects.com

APPROVED	CHECKED	DRAWN BY
CD	CD	DP
SCALE	DATE	FILE NO.
AS NOTED	July 2012	2012-19

DRAWING NUMBER	REVISION NUMBER
A502	0
CAD FILE: 2012-19-502 Wall Section and Details.dwg	DRAWER NO.: