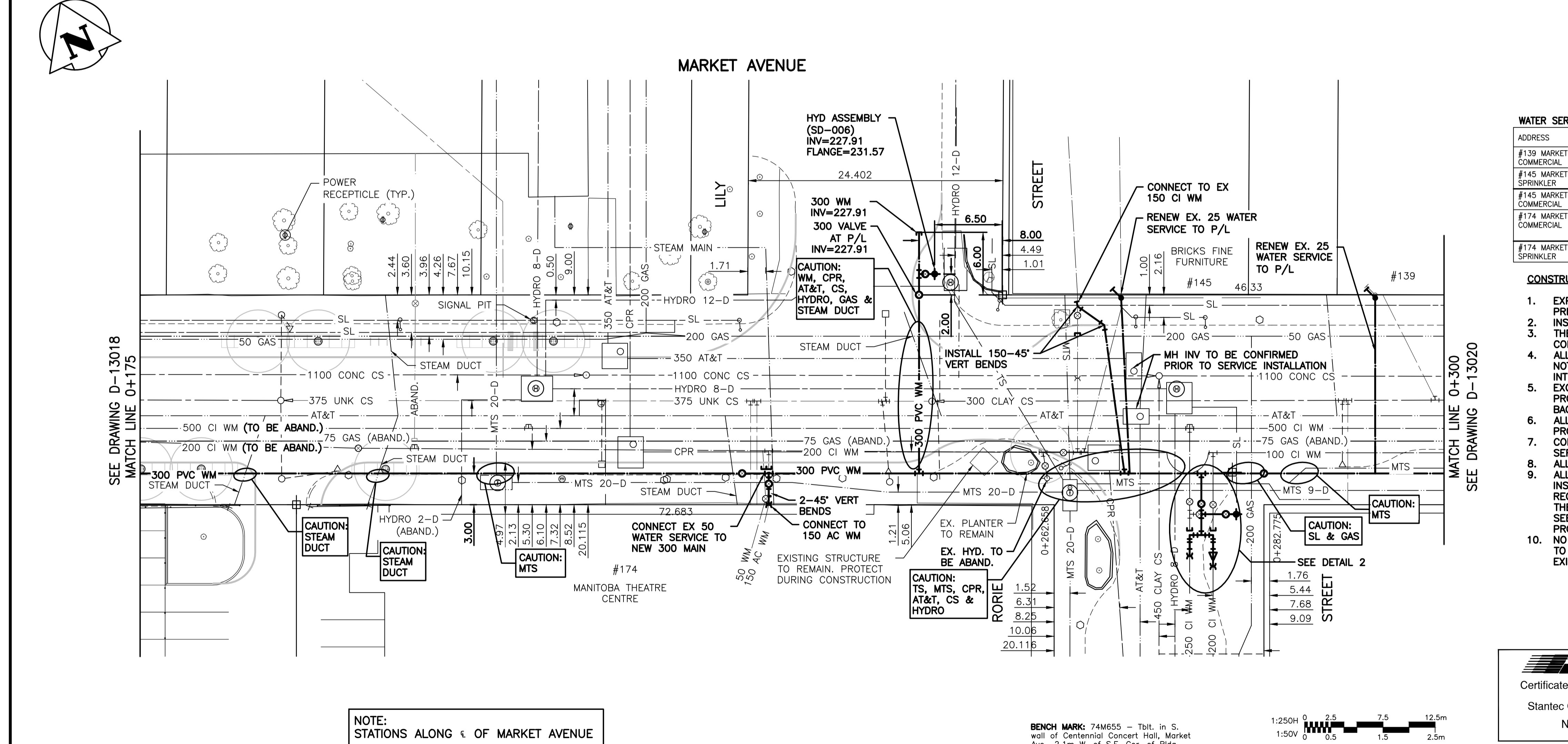


MARKET AVENUE



WATER SERVICE INFORMATION

ADDRESS	SIZE & TYPE STREET	SIZE & TYPE PROPERTY	STOP COCK LOCATION SHORT & LONG	CORP LOCATION FROM STOP COCK	REMARKS
#139 MARKET AVE COMMERCIAL	25 LEAD	25 LEAD	OPP CENTRE OF CTR DOOR 10.7 EEL RORIE	SAME AS S/C	SERVICED OFF MARKET
#145 MARKET AVE COMMERCIAL	150 COPPER	150 COPPER	7.0 EWL RORIE 37.5 EWL BLDG	4.3 W S/C	SERVICED OFF MARKET
#145 MARKET AVE COMMERCIAL	25 COPPER	25 COPPER	3.0 EEL OF DOOR 2.7 EWL OF RORIE	NO INFORMATION	SERVICED OFF MARKET
#174 MARKET AVE COMMERCIAL	50 COPPER	50 COPPER	16.8 EE END OF CENTENNIAL 90 W HYDT SW CORNER OF MARKET & RORIE	0.3 W S/C	SERVICED OFF MARKET
#174 MARKET AVE SPRINKLER	150 AC	150 AC	VALVE 3.5 NSL OF MARKET 28.0 WWL RORIE	NO INFORMATION	SERVICED OFF MARKET

- CONSTRUCTION NOTES:**
- EXPOSE ALL WATERMAIN CONNECTIONS AND CONFIRM INVERTS PRIOR TO CONSTRUCTION.
 - INSTALL WATERMAINS AND SERVICES BY TRENCHLESS METHODS.
 - THE LATEST VERSION OF THE CITY OF WINNIPEG STANDARD CONSTRUCTION SPECIFICATION SHALL APPLY.
 - ALL BUILDINGS EFFECTED BY WATER SHUT DOWNS SHALL BE NOTIFIED A MINIMUM OF 24 HOURS PRIOR TO SERVICE INTERRUPTION.
 - EXCAVATIONS UNDER AND WITHIN 1.0m OF EXISTING AND PROPOSED PAVEMENT, INCLUDING SIDEWALKS, SHALL BE BACKFILLED WITH CLASS 3 BACKFILL.
 - ALL EXISTING LEAD WATER SERVICES SHALL BE RENEWED TO PROPERTY LINE.
 - CONTRACTOR TO CONFIRM ACTUAL LOCATION OF WATER SERVICES. SERVICES SHOWN ON PLANS ARE APPROXIMATE.
 - ALL VALVES TO BE INSTALLED COUNTER-CLOCKWISE TO CLOSE.
 - ALL SURFACE WORKS DAMAGED DURING THE WATERMAIN INSTALLATION OUTSIDE THE LIMITS OF THE PROPOSED ROAD RECONSTRUCTION AND LANDSCAPING SHALL REPAIRED AS PER THE CITY OF WINNIPEG STANDARD CONSTRUCTION SPECIFICATION. SEE SURFACE WORKS AND LANDSCAPING DRAWINGS FOR PROPOSED CONSTRUCTION LIMITS.
 - NO SURVEY INFORMATION WAS COLLECTED FROM STATION 2+90 TO STATION 4+00. CONTRACTOR TO CONFIRM LOCATION OF EXISTING UTILITIES PRIOR TO CONSTRUCTION.

WARNING

IF POWER EQUIPMENT OR EXPLOSIVES ARE TO BE USED FOR EXCAVATION ON THIS PROJECT THE CONTRACTOR MUST:
 1) NOTIFY THE GAS COMPANY OF THE PROPOSED LOCATION OF EXCAVATION.
 2) TAKE PRECAUTION TO AVOID DAMAGE TO GAS COMPANY INSTALLATIONS.
 SEE PROVINCIAL REGULATION 140/92 FOR DETAILS

METRIC

WHOLE NUMBERS INDICATE MILLIMETRES
 DECIMALIZED NUMBERS INDICATE METRES

BID OPPORTUNITY 531-2012

APEGM
 Certificate of Authorization
 Stantec Consulting Ltd.
 No. 1301

NOTE: STATIONS ALONG E OF MARKET AVENUE

EXISTING	LEGEND-PLAN	PROPOSED	EXISTING	LEGEND-PLAN	PROPOSED	EXISTING	LEGEND-PROFILE	PROPOSED
150 WM	WATERMAIN	150 WM	CONCRETE	CONCRETE	150 WM	WATERMAIN	150 WM	WATERMAIN
Hydrant	Hydrant	Hydrant	Asphalt	Asphalt	Hydrant Valve	Hydrant Valve	Hydrant Valve	Hydrant Valve
Valve	Valve	Valve	Back of Curb	Back of Curb	Land Drainage Sewer	Land Drainage Sewer	Land Drainage Sewer	Land Drainage Sewer
300 LDS	LAND DRAINAGE SEWER	300 LDS	Parking Meter	Parking Meter	Waste Water Sewer	Waste Water Sewer	Waste Water Sewer	Waste Water Sewer
250 WWS	WASTE WATER SEWER	250 WWS	Concrete Sidewalk	Concrete Sidewalk	C Profile	C Profile	C Profile	C Profile
Manhole	Manhole	Manhole	Property Line	Property Line	North or West Gutter	North or West Gutter	North or West Gutter	North or West Gutter
Catch Basin	Catch Basin	Catch Basin	Survey Bar	Survey Bar	South or East Gutter	South or East Gutter	South or East Gutter	South or East Gutter
Curb Inlet	Curb Inlet	Curb Inlet	WM Connection	WM Connection	North or West R	North or West R	North or West R	North or West R
Gas	Gas	Gas	Curb Stop	Curb Stop	South or East R	South or East R	South or East R	South or East R
Hydro	Hydro	Hydro	Tree	Tree	North or West Ditch	North or West Ditch	North or West Ditch	North or West Ditch
M.T.S.	M.T.S.	M.T.S.	Shrub	Shrub	South or East Ditch	South or East Ditch	South or East Ditch	South or East Ditch
Existing	Legend-Plan	Proposed	Existing	Legend-Plan	Proposed	Existing	Legend-Profile	Proposed

LOCATION APPROVED UNDERGROUND STRUCTURES

SUPV. U/G STRUCTURES COMMITTEE

DATE

NOTE: LOCATION OF UNDERGROUND STRUCTURES AS SHOWN ARE BASED ON THE BEST INFORMATION AVAILABLE BUT NO GUARANTEE IS GIVEN THAT ALL EXISTING UTILITIES ARE SHOWN OR THAT THE GIVEN LOCATIONS ARE EXACT. CONFIRMATION OF EXISTENCE AND EXACT LOCATION OF ALL SERVICES MUST BE OBTAINED FROM THE INDIVIDUAL UTILITIES BEFORE PROCEEDING WITH CONSTRUCTION.

NO.	REVISIONS	DATE	BY
1	MOVED VALVE, ADD HYD. TO LILY	12.07.09	R.M.S.

Stantec Consulting Ltd.
 905 Waverley Street, Winnipeg, Manitoba
 Tel 204-489-5900 Fax 204-453-9012

DESIGNED BY: R.M.S. CHECKED BY: J.K.H.
 DRAWN BY: R.D.K. APPROVED BY: H.A.K.

HOR. SCALE: 1:250
 VERTICAL: 1:50

RELEASED FOR CONSTRUCTION: DATE

THE CITY OF WINNIPEG
 PLANNING PROPERTY AND DEVELOPMENT DEPT
 PROPERTY AND LAND USE DIVISION

MARKET AVENUE RECONSTRUCTION
 75.0m E OF MAIN STREET
 TO RORIE STREET

SHEET 3 OF 12
 CAD FILE DRAWING NUMBER: 05830c-203-776.dwg
 CITY DRAWING NUMBER: D-13019

CONSULTANT DRAWING NO. C-202