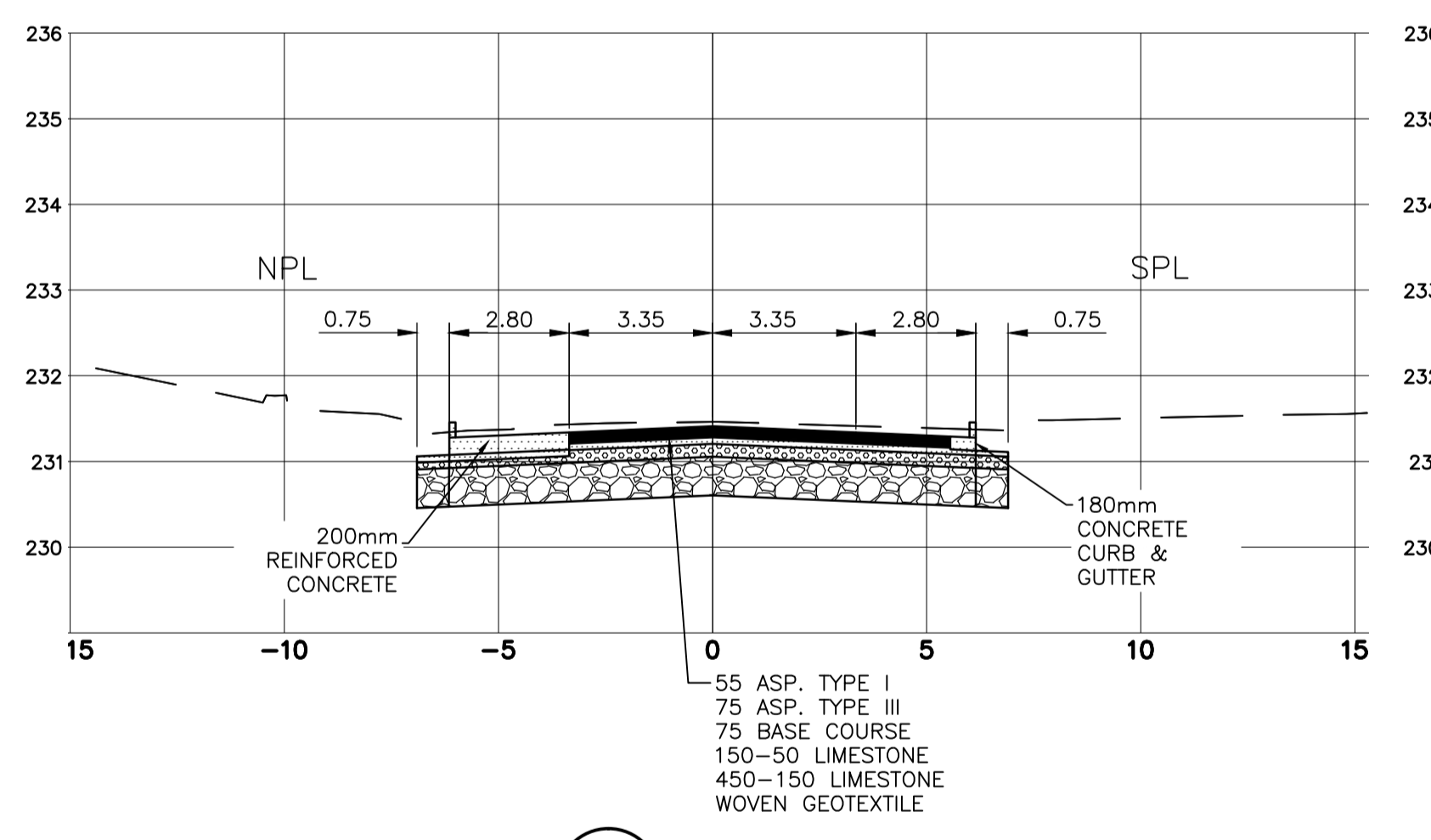
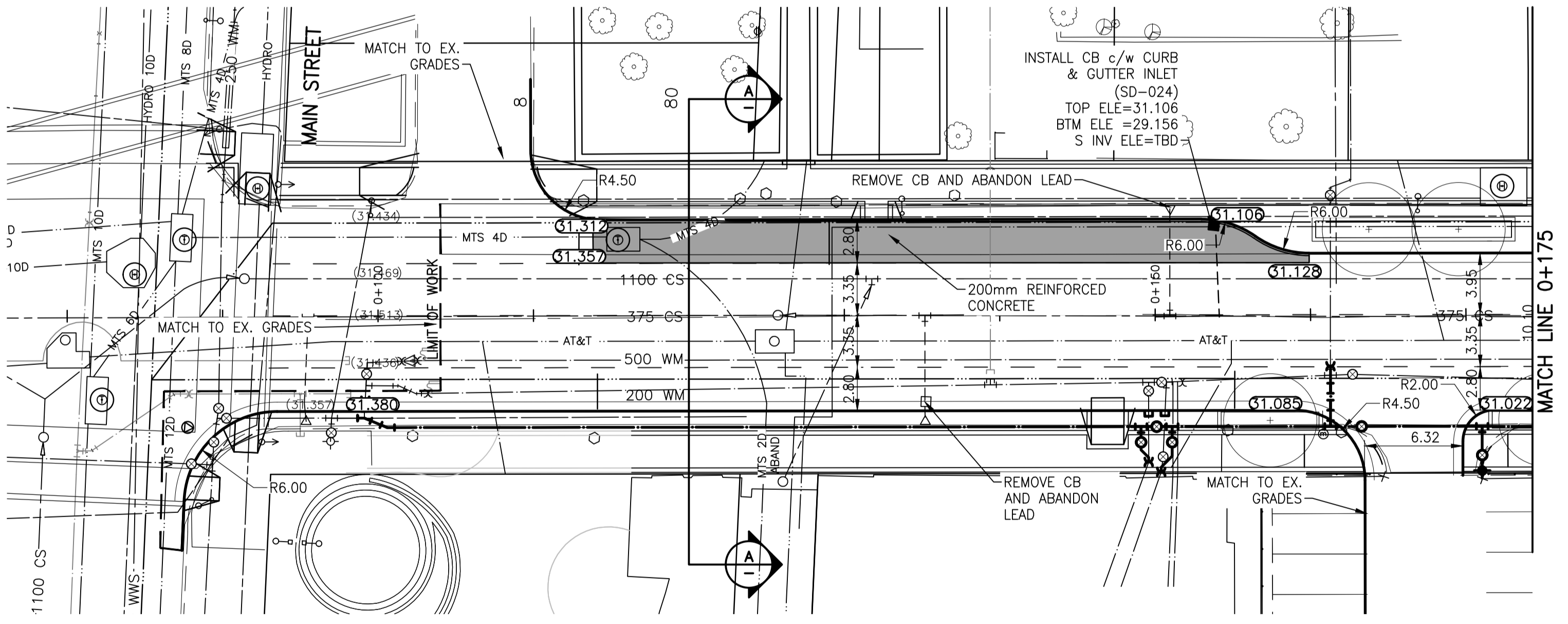
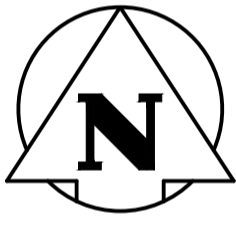


MARKET AVENUE

NOTE:
ALL HYDRO, MTS, AND OTHER MANHOLE'S AND WATER VALVES TO BE ADJUSTED TO DESIGN ELEVATIONS.



A MARKET AVE STA 0+120.00
1:100H 1:50V

WARNING

IF POWER EQUIPMENT OR EXPLOSIVES ARE TO BE USED FOR EXCAVATION ON THIS PROJECT THE CONTRACTOR MUST:
1) NOTIFY THE GAS COMPANY OF THE PROPOSED LOCATION OF EXCAVATION.
2) TAKE PRECAUTION TO AVOID DAMAGE TO GAS COMPANY INSTALLATIONS.
SEE PROVINCIAL REGULATION 140/92 FOR DETAILS

METRIC

WHOLE NUMBERS INDICATE MILLIMETRES
DECIMALIZED NUMBERS INDICATE METRES

NOTE:
INSTALL TEMPORARY ASPHALT RAMP FOR SOUTH ACCESS TO THE PARKING LOT OF JOHN HIRSCH.



150 WM	WATERMAIN	150 WM	HYDRO	150 WM	WATERMAIN	150 WM
+	HYDRANT	+	M.T.S.	+	HYDRANT, VALVE	+
+	VALVE	+	CONCRETE	+	LAND DRAINAGE SEWER	+
300 LDS	LAND DRAINAGE SEWER	300 LDS	ASPHALT	250 WWS	WASTE WATER SEWER	250 WWS
250 WWS	WASTE WATER SEWER	250 WWS	SIDEWALK	X	Q PROFILE	
○	MANHOLE	○	PROPERTY LINE	□	NORTH OR WEST GUTTER	
□	CATCH BASIN	□	SURVEY BAR	○	SOUTH OR EAST GUTTER	
▽	CURB INLET	▽	DITCH	◇	NORTH OR WEST R	
+	JUNCTIONS	+	ELEVATION	○	SOUTH OR EAST R	
+	CULVERT	+	SIDEWALK RAMP	△	NORTH OR WEST DITCH	
+	GAS	+		▽	SOUTH OR EAST DITCH	
---	EXISTING	---	LEGEND-PLAN	---	EXISTING	---
---	LEGEND-PLAN	---	PROPOSED	---	LEGEND-PROFILE	---

LOCATION APPROVED UNDERGROUND STRUCTURES
SUPV. U/G STRUCTURES COMMITTEE
DATE
NOTE:
LOCATION OF UNDERGROUND STRUCTURES AS SHOWN ARE BASED ON THE BEST INFORMATION AVAILABLE BUT NO GUARANTEE IS GIVEN THAT ALL EXISTING UTILITIES ARE SHOWN OR THAT THE GIVEN LOCATIONS ARE EXACT. CONFIRMATION OF EXISTENCE AND EXACT LOCATION OF ALL SERVICES MUST BE OBTAINED FROM THE INDIVIDUAL UTILITIES BEFORE PROCEEDING WITH CONSTRUCTION.

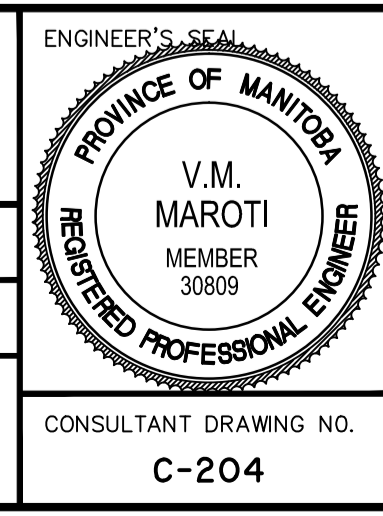
B.M. ELEV.			
1	ISSUED FOR TENDER	12.07.04	V.M.M.
0	ISSUED FOR REVIEW	12.06.26	V.M.M.
NO. REVISIONS		DATE	BY

Stantec Consulting Ltd.
905 Waverley Street, Winnipeg, Manitoba
Tel 204-489-5900 Fax 204-453-9012

DESIGNED BY: V.M.M./D.P. CHECKED BY: V.M.M.
DRAWN BY: D.P. APPROVED BY: V.M.M.

HOR. SCALE: 1:250
VERTICAL: 1:10

RELEASED FOR CONSTRUCTION: _____
DATE: 2012.06.23



THE CITY OF WINNIPEG
PLANNING PROPERTY AND DEVELOPMENT DEPT.
PLANNING AND LAND USE DIVISION

MARKET AVENUE RECONSTRUCTION
MAIN STREET TO RORIE STREET
STA. 0+090 TO STA. 0+175
ROAD RECONSTRUCTION

SHEET 5 OF 12
CAD FILE DRAWING NUMBER 05830C-20I-776
CITY DRAWING NUMBER P-3336-01

CONSULTANT DRAWING NO. C-204

VA137\stc\va137\05830\winipeg\02_design\sheet_files\05830C-20I-776.dwg