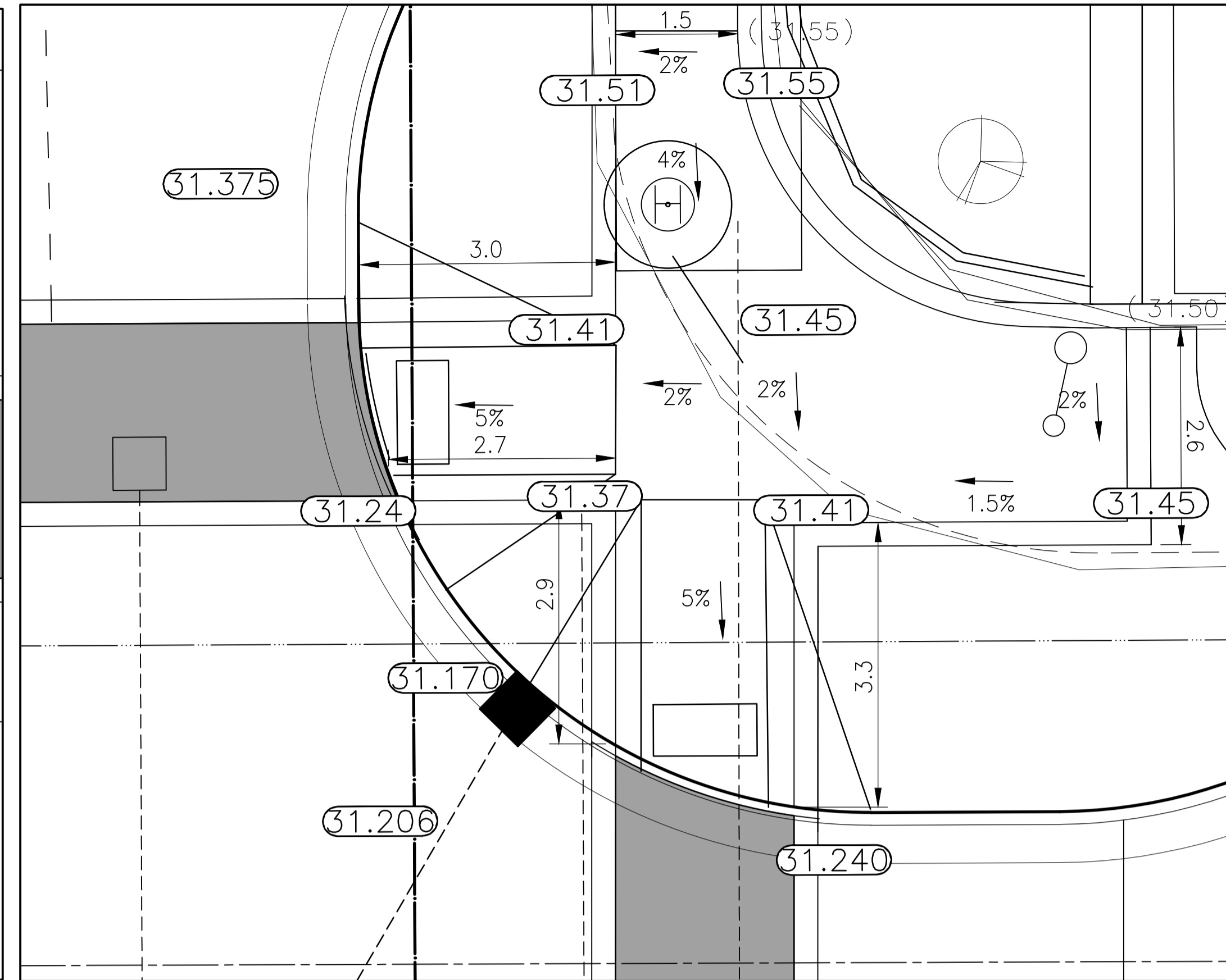
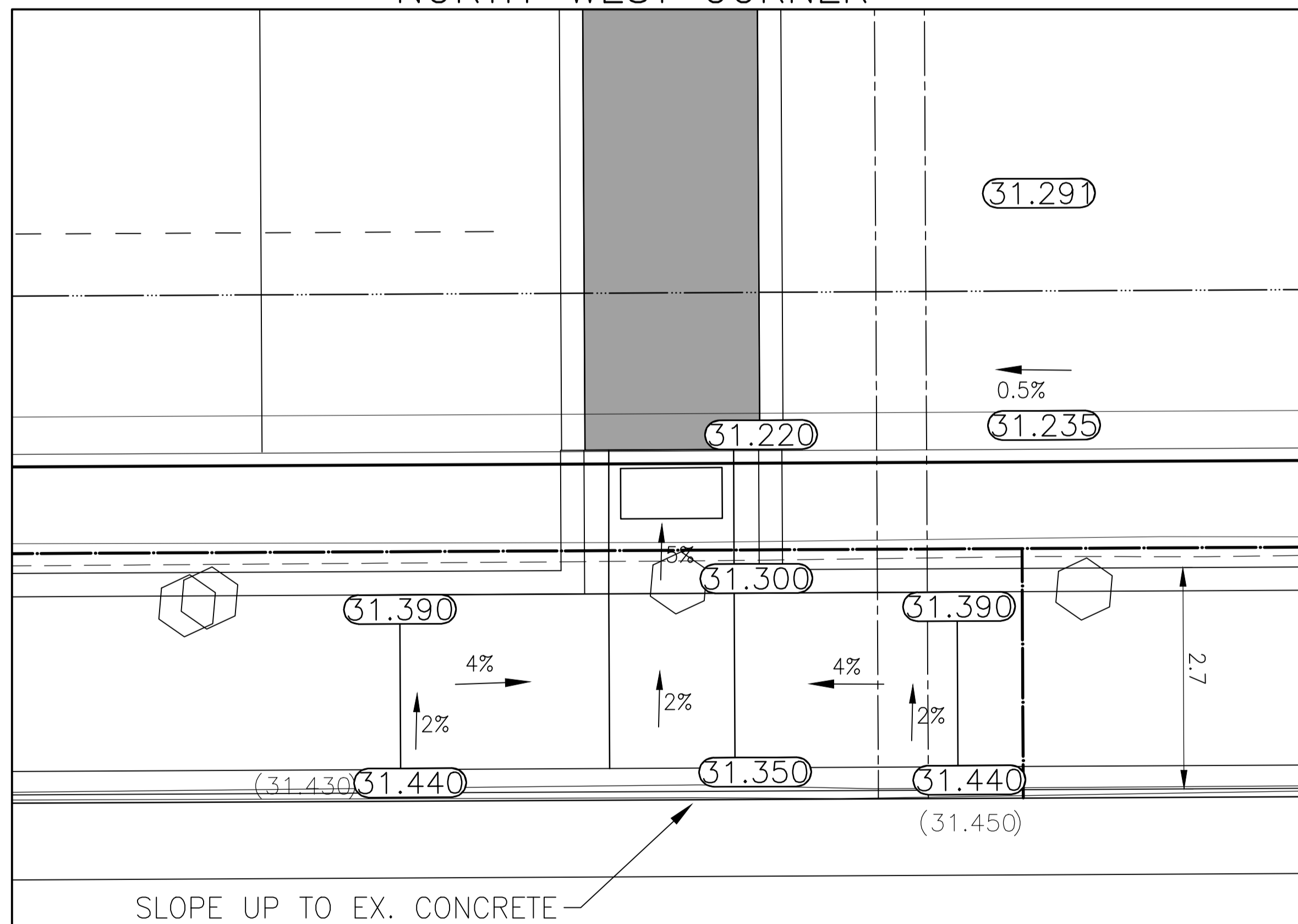


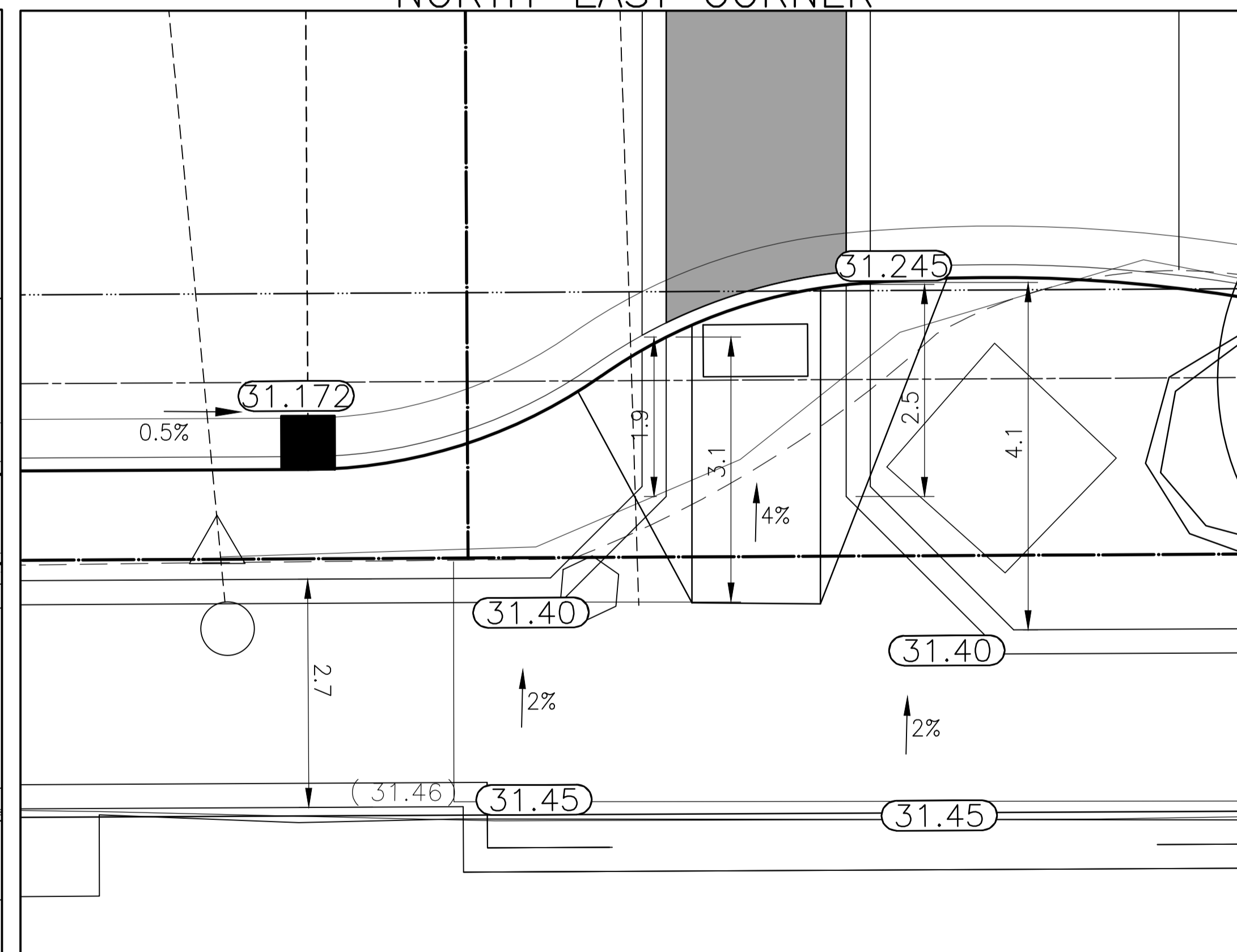
NORTH-WEST CORNER



NORTH-EAST CORNER



SOUTH-WEST CORNER



SOUTH-EAST CORNER

WARNING

IF POWER EQUIPMENT OR EXPLOSIVES ARE TO BE USED FOR EXCAVATION ON THIS PROJECT THE CONTRACTOR MUST:
 1) NOTIFY THE GAS COMPANY OF THE PROPOSED LOCATION OF EXCAVATION.
 2) TAKE PRECAUTION TO AVOID DAMAGE TO GAS COMPANY INSTALLATIONS.
 SEE PROVINCIAL REGULATION 140/92 FOR DETAILS

METRIC

WHOLE NUMBERS INDICATE MILLIMETRES
 DECIMALIZED NUMBERS INDICATE METRES



EXISTING	LEGEND-PLAN	PROPOSED	EXISTING	LEGEND-PLAN	PROPOSED	EXISTING	LEGEND-PROFILE	PROPOSED
	WATERMAIN			HYDRO			WATERMAIN	
	HYDRANT			M.T.S.			HYDRANT, VALVE	
	VALVE			CONCRETE			LAND DRAINAGE SEWER	
	300 L.D.S.			ASPHALT			WASTE WATER SEWER	
	250 W.W.S.			SIDEWALK			Q PROFILE	
	MANHOLE			PROPERTY LINE			NORTH OR WEST GUTTER	
	CATCH BASIN			SURVEY BAR			SOUTH OR EAST GUTTER	
	CURB INLET			DITCH			NORTH OR WEST R	
	JUNCTIONS			ELEVATION			SOUTH OR EAST R	
	CULVERT			SIDEWALK RAMP			NORTH OR WEST DITCH	
	GAS			NORTH OR EAST DITCH			SOUTH OR EAST DITCH	

LOCATION APPROVED UNDERGROUND STRUCTURES

SUPV. U/G STRUCTURES COMMITTEE DATE
 NOTE:
 LOCATION OF UNDERGROUND STRUCTURES AS SHOWN ARE BASED ON THE BEST INFORMATION AVAILABLE BUT NO GUARANTEE IS GIVEN THAT ALL EXISTING UTILITIES ARE SHOWN OR THAT THE GIVEN LOCATIONS ARE EXACT. CONFIRMATION OF EXISTENCE AND EXACT LOCATION OF ALL SERVICES MUST BE OBTAINED FROM THE INDIVIDUAL UTILITIES BEFORE PROCEEDING WITH CONSTRUCTION.

NO.	REVISIONS	DATE	BY	B.M. ELEV.
1	ISSUED FOR TENDER	12.07.04	V.M.M.	
0	ISSUED FOR REVIEW	12.06.26	V.M.M.	

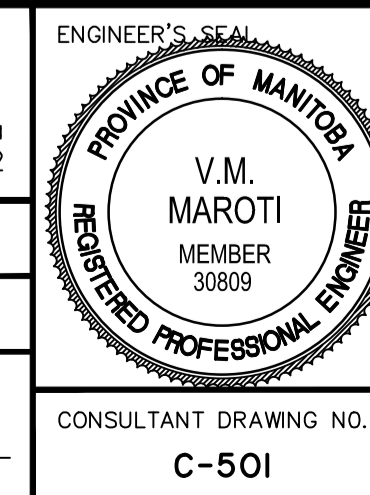
Stantec Consulting Ltd.
 905 Waverley Street, Winnipeg, Manitoba
 Tel 204-489-5900 Fax 204-453-9012

DESIGNED BY: V.M.M./D.P. CHECKED BY: V.M.M.
 DRAWN BY: D.P. APPROVED BY: V.M.M.

HOR. SCALE: 1:150
 VERTICAL: 1:10

RELEASED FOR CONSTRUCTION: DATE

CONSULTANT DRAWING NO. C-501



THE CITY OF WINNIPEG
 PLANNING PROPERTY AND DEVELOPMENT DEPT.
 PLANNING AND LAND USE DIVISION

MARKET AVENUE RECONSTRUCTION
 MAIN STREET AND LILY INTERSECTION
 SIDEWALK DETAIL
 ROAD RECONSTRUCTION

SHEET 7 OF 12
 CAD FILE DRAWING NUMBER 05830C-50I-776
 CITY DRAWING NUMBER P-3336-03

V:\1337\Market\133706260\Drawings\02_design\Sheet_01a.dwg (05830C-50I-776.dwg)
 2012 June 26, 2:58 PM