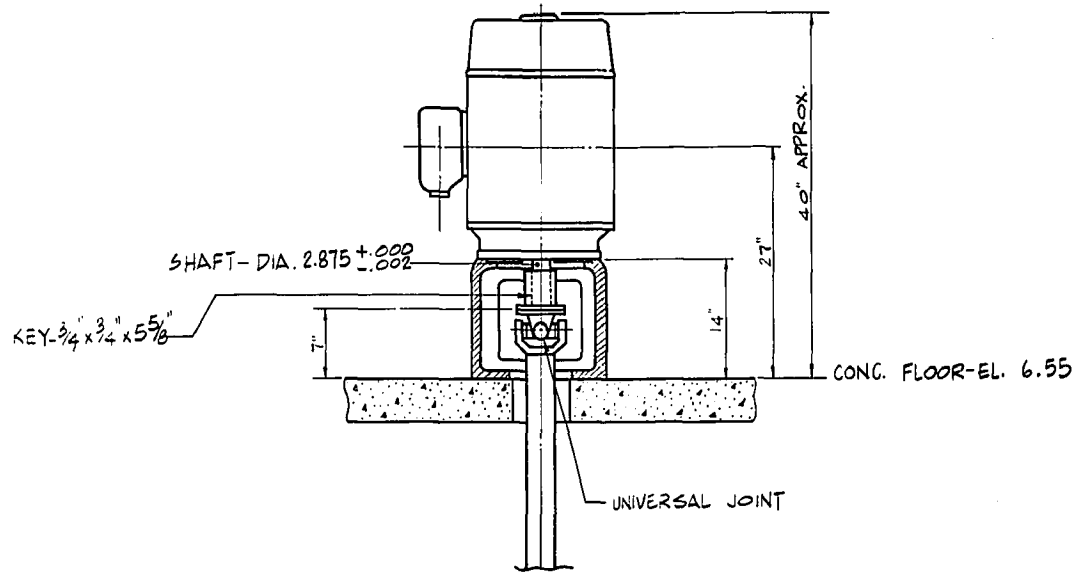


File # 10106
SP

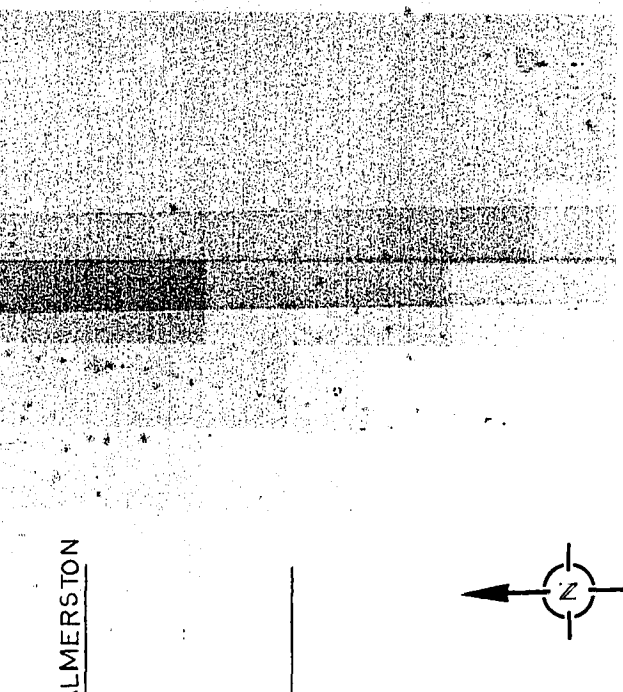
498B

REF. or DRAWING No.

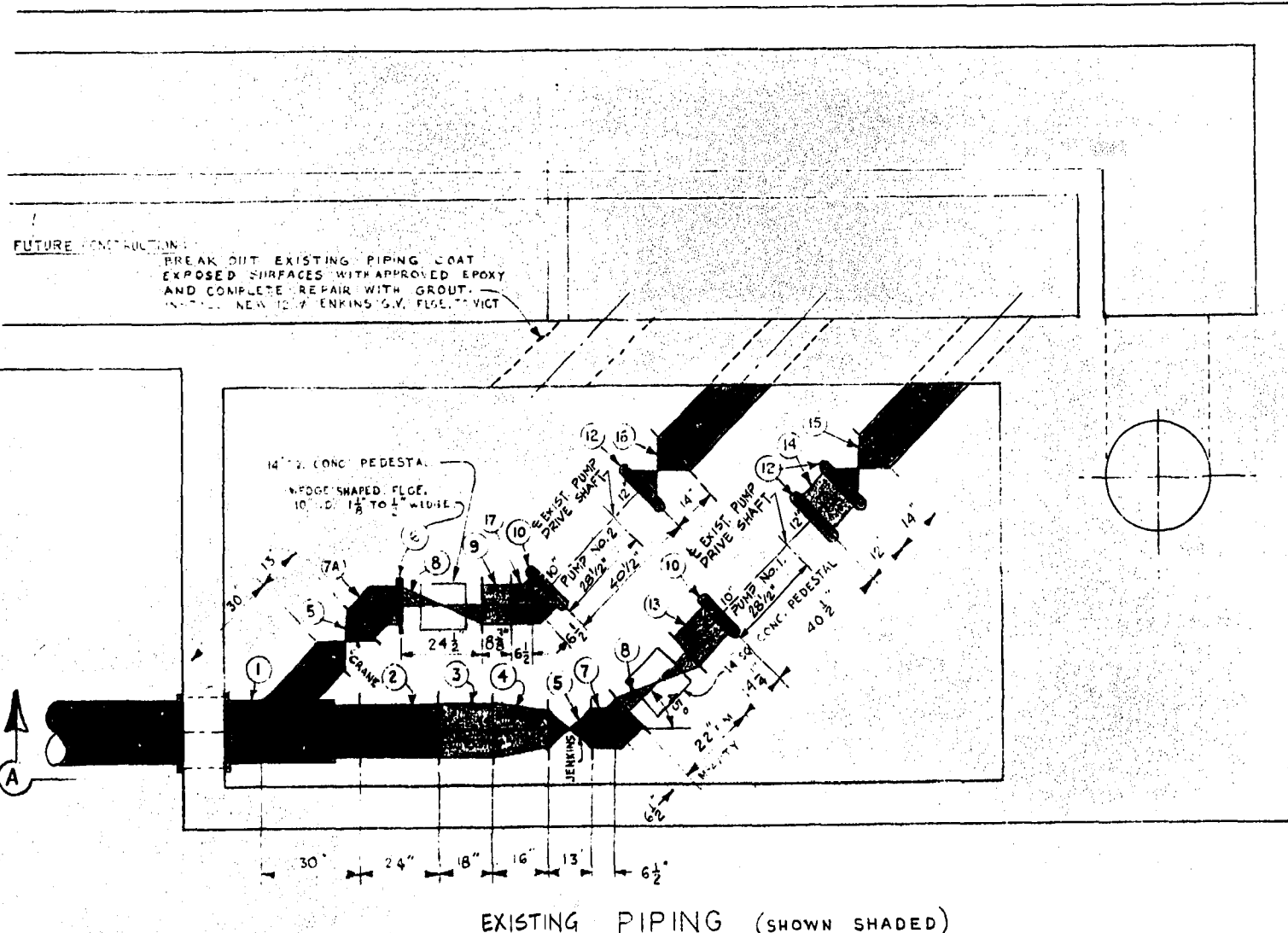
DETAILS



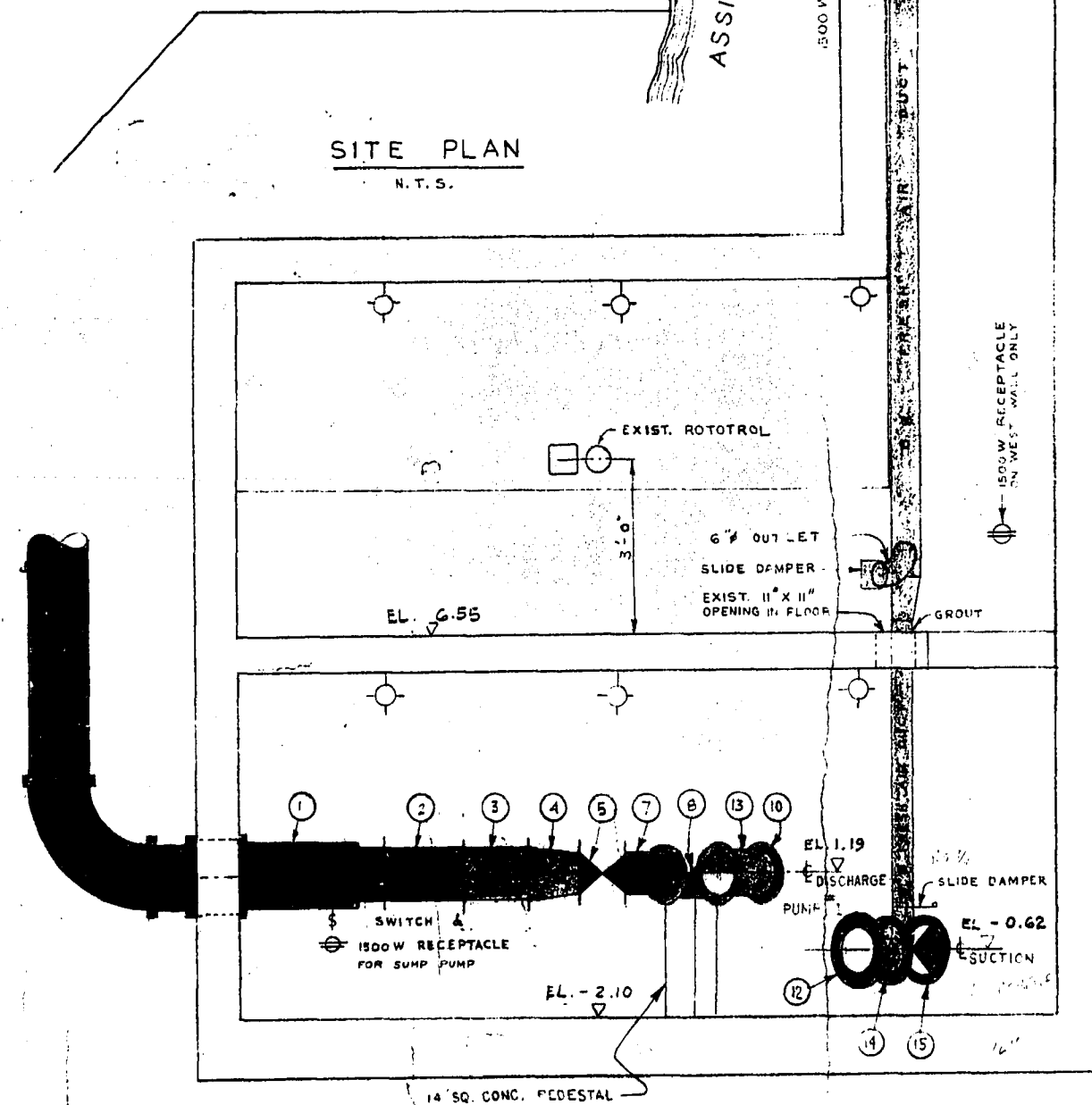
BROOK ELECTRIC MOTOR
FRAME 404 TC, 60 HP, 3 PHASE
60 HERTZ, 550 VOLT, 1200 RPM



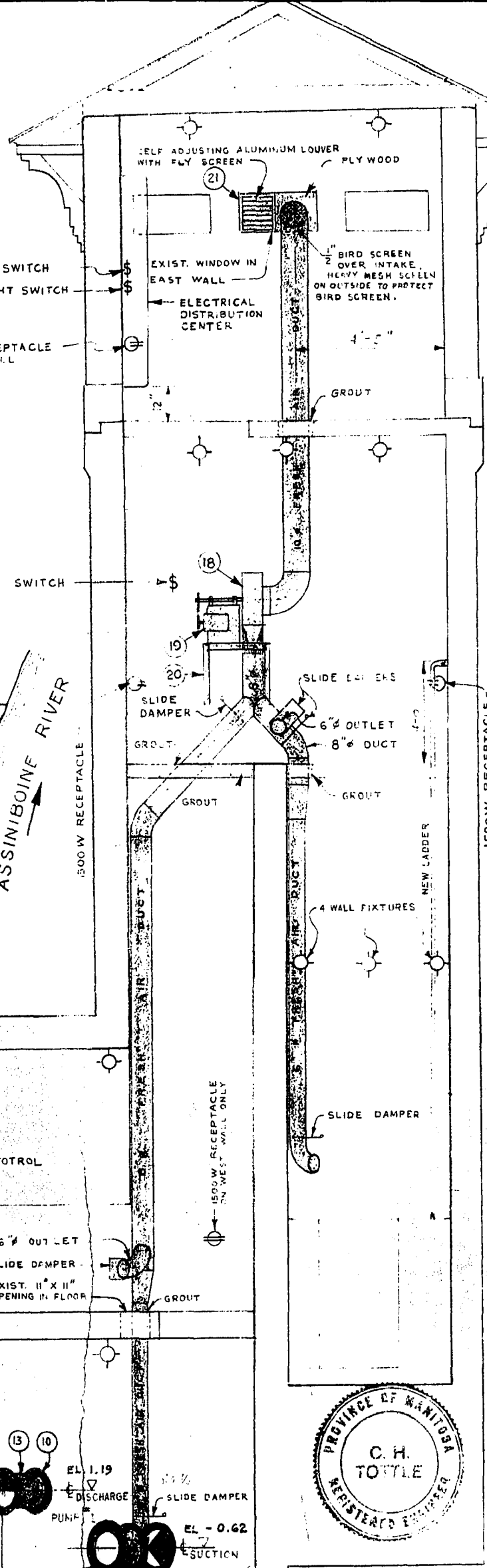
SITE PLAN
N.T.S.



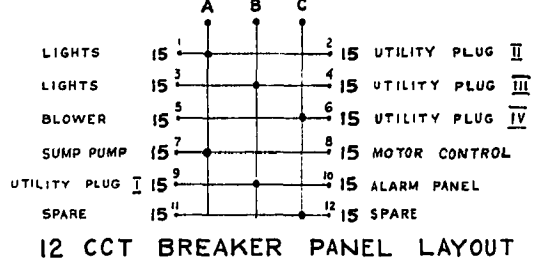
EXISTING PIPING (SHOWN SHADED)



SEC. "A-A"

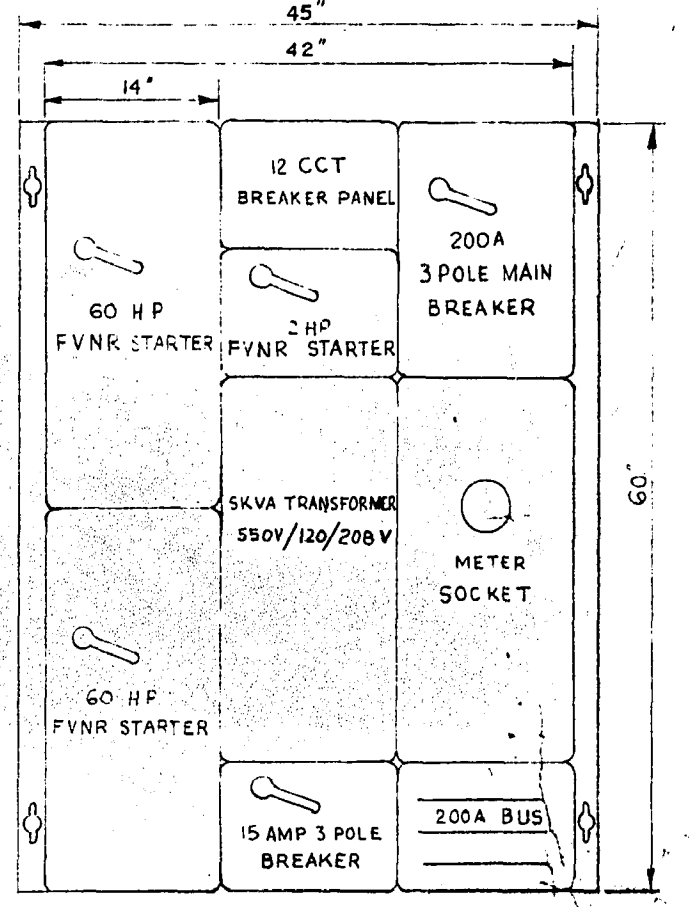


MATERIAL LIST					
NO.	QTY	SIZE	DESCRIPTION	END	REMARKS
1	1	16x14x10	C.I. TEE	FLGE.-FLGE	EXISTING
2	1	14"	C.I. FILLER	" "	"
3	1	14"	C.I. " "	" "	"
4	1	14x10	C.I. REDUCER	" "	"
5	2	10"	C.I. GATE VALVES	" "	EXISTING
6	1	10"	C.I. FILLER WEDGE SHAPED	FLANGE	WEDGE EXIST.
7	1	10"	C.I. ELBOWS	FLGE.-FLGE	EXIST
8	2	10"	C.I. CHECK VALVES	" "	EXIST
9	1	10"	C.I. FILLER	" "	EXIST
10	2	10"	VICTAULIC COUPLINGS	" "	EXIST
11	3	12"	VICTAULIC COUPLINGS	" "	EXIST
12	1	10"	C.I. FILLER	FLGE.-VICT	"
13	1	12"	C.I. " "	VICT.-VICT	"
14	1	12"	C.I. GATE VALVE	JENKINS	EXIST. W.
15	1	12"	C.I. " "	CRANE	"
16	1	10"	C.I. ELBOW	FLGE.-VICT.	"
17	1	10"	FAN	" "	"
18	1	1/2-1/2 HP	MOTOR	" "	DUAL SPEED WALL MOUNTED
19	1	2x2x1/2	SUPPORT	" "	"
20	1	TO SUIT	CARNES ALUM LOUVER MODEL L-36	" "	"
21	1	10"	C.I. ELBOW	FLGE.-FLGE 32 3/4"	SPECIAL CASTING



LIST OF FIXTURES

- PUMP FLOOR - 4 CEILING FIXTURES; SUMP PUMP 1/2 HP 120 V. SUBM. OVERLOAD DISCONNECT PLUS PLUG
- PUMP MOTOR FLOOR - 2 CEILING FIXTURES; UTILITY PLUG I
- COMM MOTOR FLOOR - 2 CEILING FIXTURES; UTILITY PLUGS II III BLOWER OVERLOAD DISCONNECT
- VALVE CHAMBER - 1 WALL FIXTURE
- COMM CHAMBER - 4 WALL FIXTURES
- TOP FLOOR - 2 CEILING FIXTURES; UTILITY PLUG IV; 2 POLE LIGHTING SWITCH (2 SPEED SELECTROL SWITCH FOR BLOWER)



ELECTRICAL DISTRIBUTION CENTER
(KLOCKNER MOELLER)
LOCATED ON NORTH WALL OF SUPERSTRUCTURE

FOR INFORMATION ONLY

THE METROPOLITAN CORPORATION OF GREATER WINNIPEG
WATERWORKS & WASTE DISPOSAL DIVISION
PENMAN - DIRECTOR

SEWERAGE DISPOSAL DEPT. DES. *Adelle* CHKD *[Signature]*
ORN. *HB* DATE 27 NOV 70
ENG. DES. *[Signature]*
ENG. OPS. *[Signature]*
APPROVED *[Signature]*

ALTERATIONS TO
AUBREY ST. COMM.
& PUMPING STATION

SCALES
AS NOTED
DRAWING NO. 498B

MICROFILMED 1972