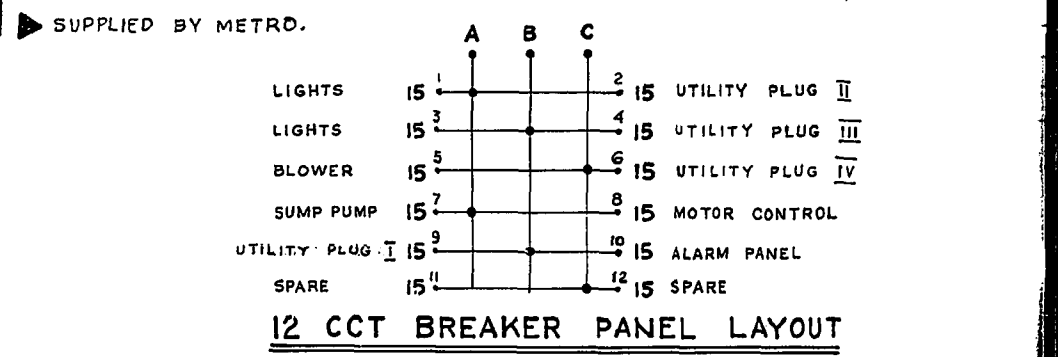
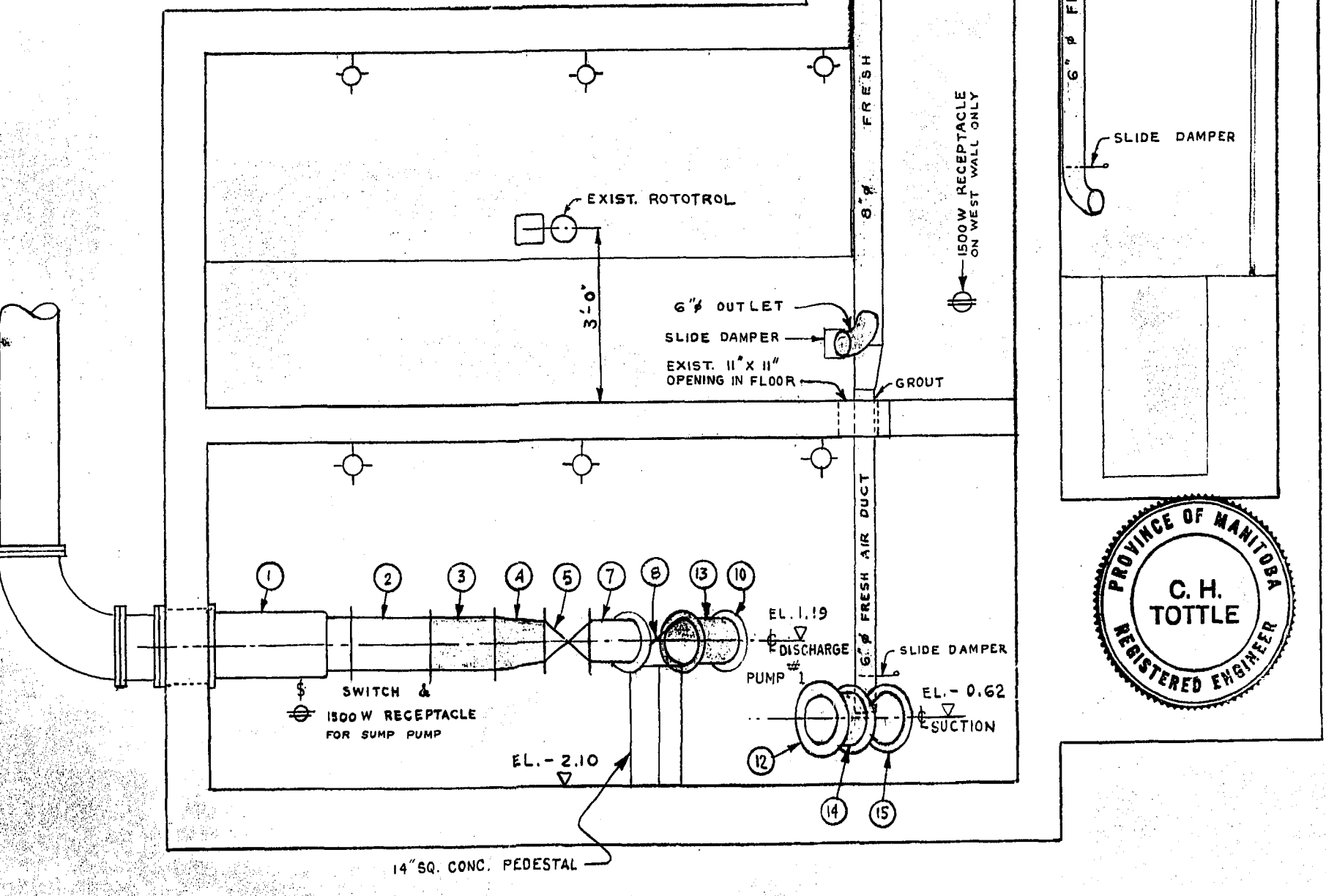
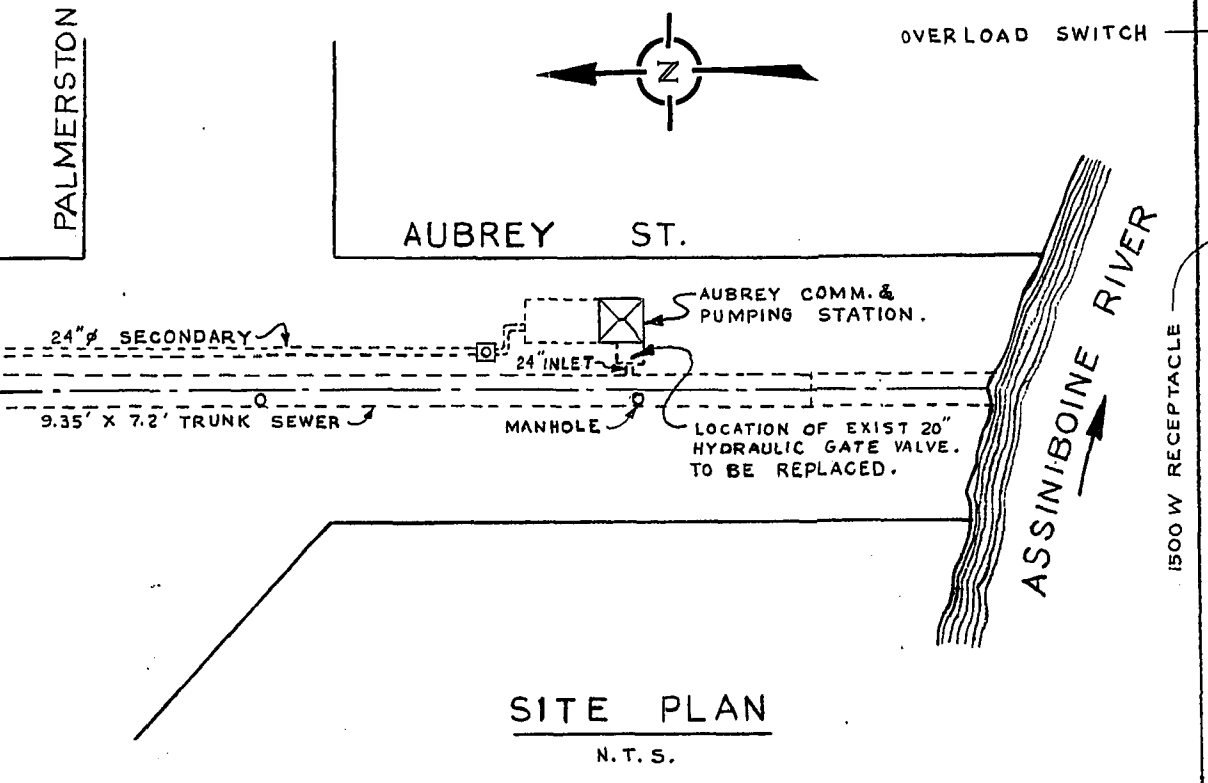
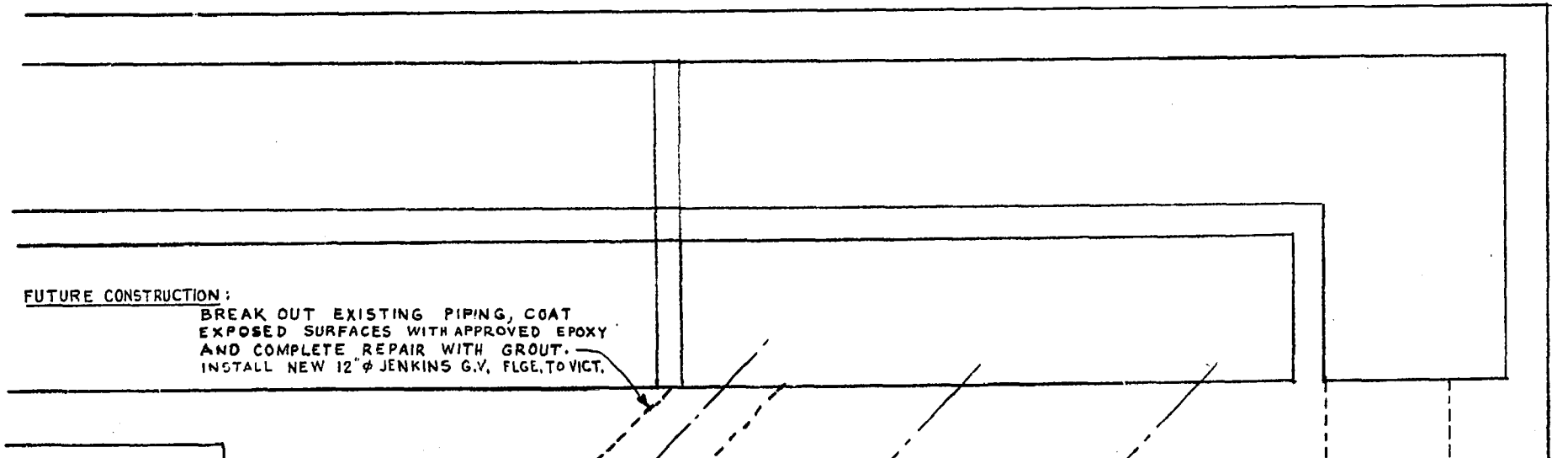
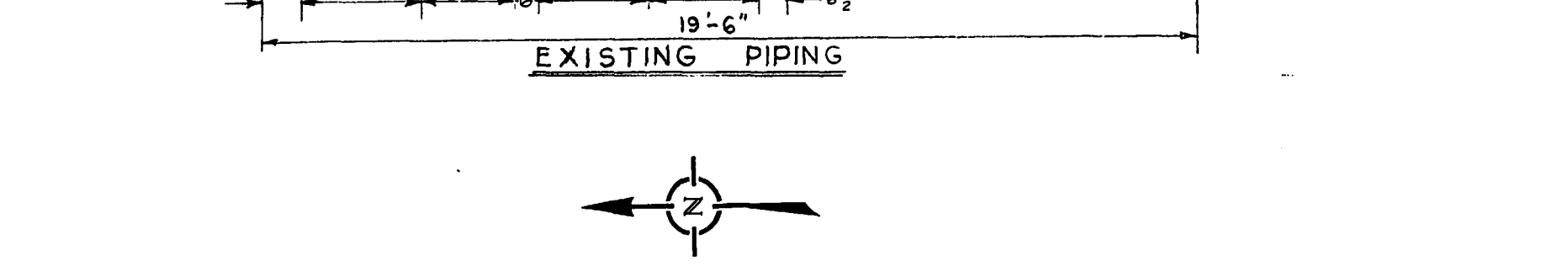
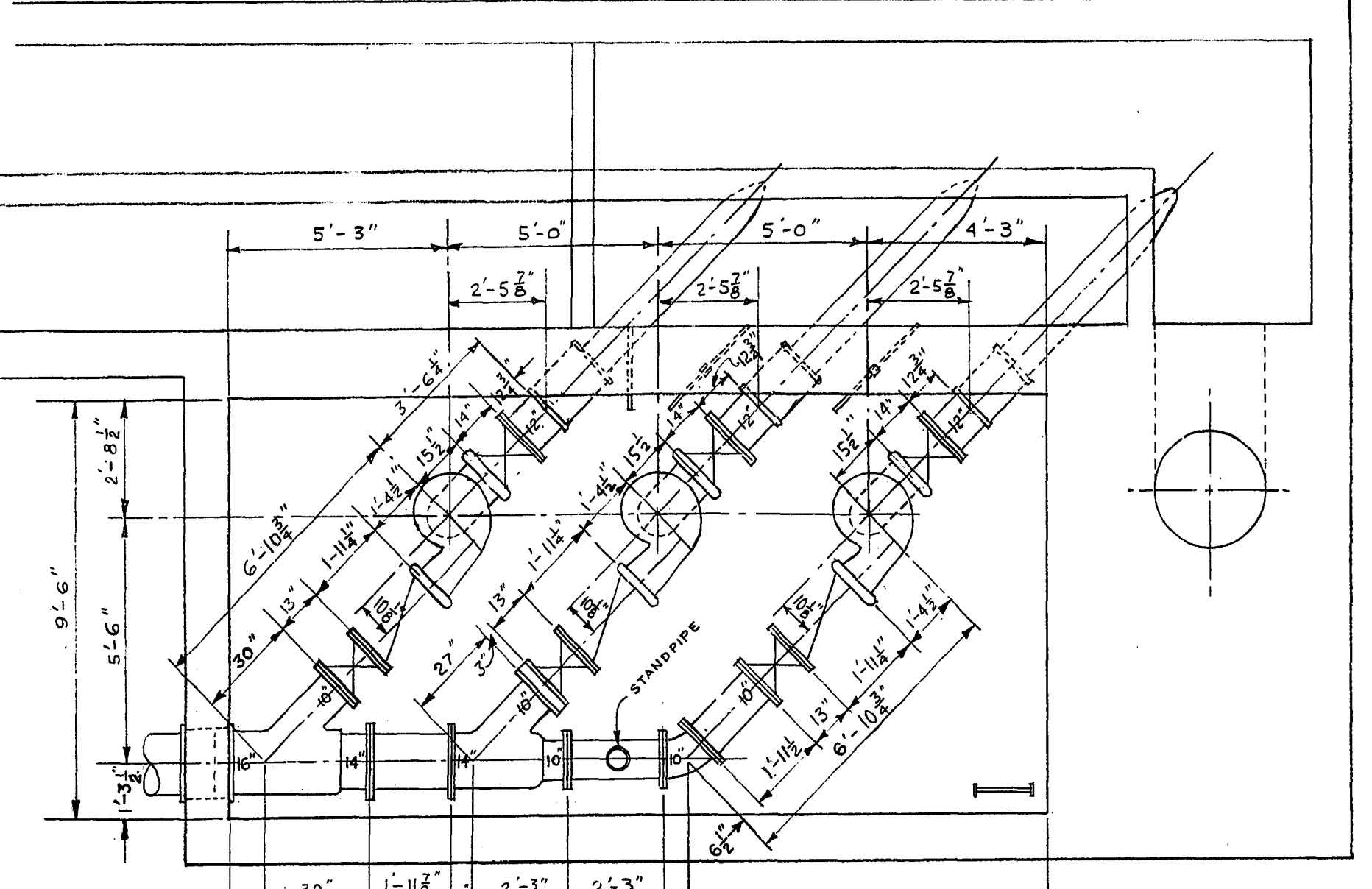


MATERIAL LIST

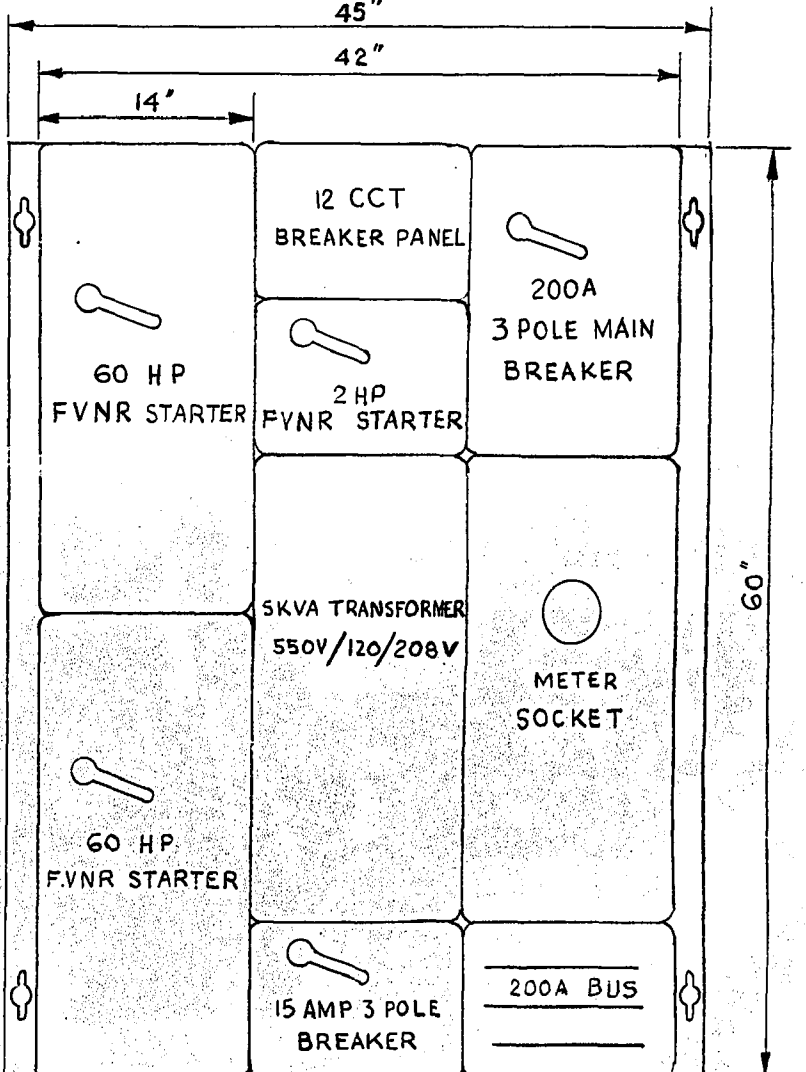
NO.	AMT	SIZE	DESCRIPTION	END	LENGTH	REMARKS
1	1	16 X 14 X 10	C.I. TEE	FLGE. - FLGE.		EXISTING
2	1	14	C.I. FILLER	" "	24"	"
3	1	14	C.I. "	" "	"	NEW
4	1	14 X 10	C.I. REDUCER	" "	16"	"
5	2	10	C.I. GATE VALVES	FLGE. - FLGE.	13"	EXISTING
6	1	10	C.I. FILLER WEDGE SHAPED	FLANGE 1 1/2 TO 3/4 WEDGE		NEW
7	1	10	C.I. ELBOWS	FLGE. - FLGE.	6"	1-EXIST. 1-NEW
8	2	10	C.I. CHECK VALVES	" "	2 1/2"	NEW
9	1	10	C.I. FILLER	" "	8 3/8"	"
10	2	10	VICTAULIC COUPLINGS	" "	40 1/2"	EXIST. REPLACE RUBBER GASKETS
11	2	12 X 10	MONARCH PUMPS	VICT. - VICT.		NEW
12	3	12	VICTAULIC COUPLINGS	" "	40 1/2"	EXIST. REPLACE RUBBER GASKETS
13	1	10	C.I. FILLER	FLGE. - VICT.	14 1/2"	NEW
14	1	12	C.I. "	VICT. - CT	12"	"
15	1	12	C.I. GATE VALVE JENNIS	FLGE. - VICT.	14"	EXISTING
16	1	12	C.I. "	CRANE	FLGE. - FLGE.	"
17	1	10	C.I. ELBOW	FLGE. - VICT.	6"	NEW
18	1	10	INLET FAN	" "		"
19	1	1/2 HP	MOTOR	" "		DUAL SPEED
20	1	2 X 2 X 1/4	SUPPORT	" "		WALL MOUNTED
21	1	TO SUIT	CARNES ALUM. LOUVER MODEL L-36	" "		"
7A	1	10	C.I. ELBOW	FLGE. - FLGE.	32 3/4"	SPECIAL CASTING

NOTES

- 1 REMOVE EXISTING FRESH AIR DUCTS, FAN, MOTOR & SUPPORTS. INSTALL NEW FRESH AIR DUCTS, FAN, MOTOR & SUPPORTS AS SHOWN SHADED ON DRAWING. DO NOT REMOVE EXIST. EXHAUST DUCT ON WEST WALL.
- 2 METRO TO SUPPLY 2 MONARCH PUMPS WITH SHAFTS & MOTORS & 1-20" JENKINS HYDRAULIC GATE VALVE. NOT SHOWN ON DRAWING. INSTALLATION BY CONTRACTOR.
- 3 CONTRACTOR IS RESPONSIBLE FOR ALL NECESSARY PUMP & PIPING SUPPORTS.
- 4 ALL GROUT SHALL BE NON-SHRINKABLE FERROGROUT OR APPROVED EQUAL.
- 5 ALL PIPING CLASS 22 CAST IRON.



- LIST OF FIXTURES
- PUMP FLOOR - 3 CEILING FIXTURES; SUMP PUMP 1/2 HP 120 V. SUBM. (OVERLOAD DISCONNECT PLUS PLUG)
  - PUMP MOTOR FLOOR - 3 CEILING FIXTURES; UTILITY PLUG I
  - COMM MOTOR FLOOR - 2 CEILING FIXTURES; UTILITY PLUGS II, III BLOWER (OVERLOAD DISCONNECT)
  - VALVE CHAMBER - 1 WALL FIXTURE
  - COMM CHAMBER - 4 WALL FIXTURES
  - TOP FLOOR - 2 CEILING FIXTURES; UTILITY PLUG IV; 2 POLE LIGHTING SWITCH (2 SPEED SELECTROL SWITCH FOR BLOWER)



REVIEWED BY: BCAN CHECKED  
 TRV. APPROVED AS DULY  
 BY: [Signature]

THE METROPOLITAN CORPORATION OF GREATER WINNIPEG  
**WATERWORKS & WASTE DISPOSAL DIVISION**  
 A. PENMAN - DIRECTOR

SEWAGE DISPOSAL DEPT.  
**ALTERATIONS TO AUBREY ST. COMM. & PUMPING STATION**

DES. DATE 27 NOV 70  
 ENG. OPS.  
 SCALE 1/8" = 1'-0"  
 AS NOTED  
 DRAWING NO. **498**